



# FINAL FANTASY

Here is a map of the entire Final Fantasy overworld. Surrounding the map is a list of most of the places that you will journey to.


**2 TEMPLE OF FIENDS**



**3 NORTH BRIDGE**



**4 MATOYA'S CAVE**



**5 PRAVOKA**




**6 ELFLAND AND THE CASTLE OF ELF**




**7 DWARF CAVE**




**8 NORTHWEST CASTLE**



**9 MARSH CAVE**




**10 MELMOND**



**11 TITAN'S TUNNEL**



**1 CASTLE & TOWN OF CONERIA**



**13 SARDAS CAVE**



**14 CRESCENT LAKE**



**15 GURGU VOLCANO**



**16 ICE CAVE**



**17 RYUKAHN DESERT**



**18 CARDIA ISLANDS**




**19 CASTLE OF ORDEAL**



**20 ONRAC**




**21 GAIA**




**22 LEFEIN**



**23 SEA SHRINE**



**24 WATERFALL**



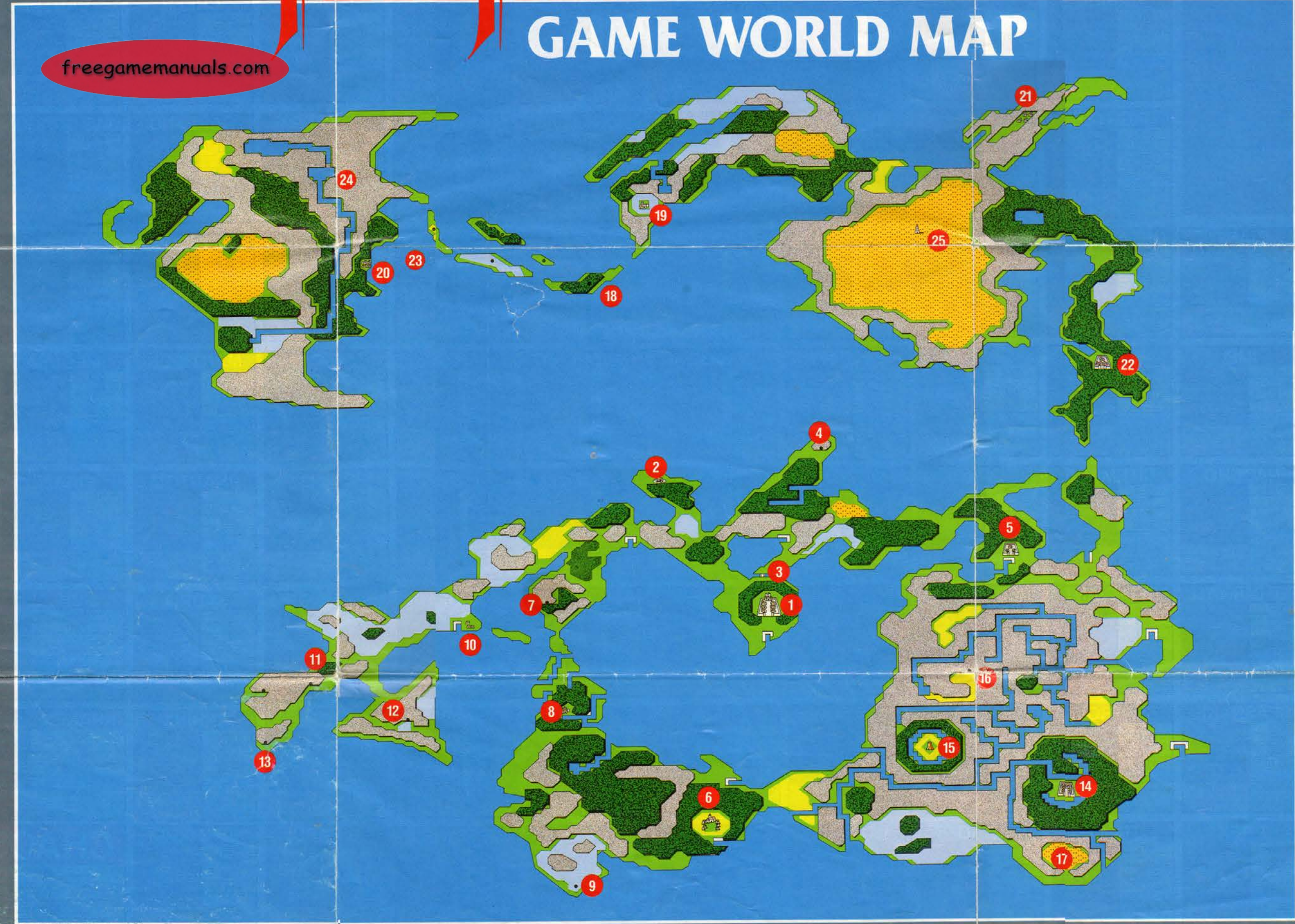
**25 MIRAGE TOWER**



**26 ???**



**27 ???**

## Enemy Identification Chart

This is a monster identification chart that will help you as you play Final Fantasy. Included is each monster's full name as well as each monster's vital statistics. Use this information to plan your battle strategies. Pay careful attention to the "Monster's Hit Points" section. It will help you determine whether or not you will be able to defeat a group of enemies. If you find a particular enemy's weakness, you may wish to add it to the chart for future reference.

Experience Points for Defeating

Monster's Hit Points

Monster's Weak Point(s)

Ineffective Attack(s)

Monster Name

Gold Obtained for Defeating

Monster's Average Attack Points

Monster's Special Attack(s)

<b>AGAMA</b> 2472 1200 296 31-62 ICE FIRE FIRE	<b>AIR</b> 1614 807 358 53-106 none OAKE, BANE, STUN, BRAK, SLEP	<b>ANKYLO</b> 2610 1 352 98-196 none none	<b>ARACHNID</b> 141 50 64 5-10 none none	<b>ASP</b> 123 50 56 6-12 none none	<b>ASTOS</b> 2250 2000 168 26-52 none RUB, FAST, FIRE, etc. plus	<b>BADMAN</b> 1263 1800 260 44-88 none none	<b>BIGEYE</b> 3591 3591 304 30-60 LIT OAKE, FIRE STUN, DARK, plus	<b>BLUE DRAGON</b> 3274 2000 454 92-184 OAKE, FIRE LIT plus	<b>BONE</b> 9 3 10 10-20 FIRE ICE, RUB, BANE, BRAK, STUN, SLEP plus	<b>BULL</b> 489 489 164 22-44 none none
<b>CARIBE</b> 240 20 92 22-44 LIT OAKE, FIRE	<b>CATMAN</b> 780 780 160 30-60 none none	<b>CEREBUS</b> 1182 600 192 30-60 FIRE FIRE	<b>CHIMERA</b> 2064 2500 300 30-60 ICE OAKE, FIRE FIRE	<b>COBRA</b> 165 50 80 22-44 none none	<b>COCTRICE</b> 186 200 50 1-2 OAKE STUN	<b>CRAWL</b> 186 200 84 1-2 none none	<b>CREEP</b> 63 15 56 17-34 FIRE none	<b>EARTH</b> 1536 768 288 66-132 FIRE OAKE, ICE, LIT, BANE, BRAK, STUN, SLEP plus	<b>EVILMAN</b> 2700 3000 190 55-110 none RUB, BANE, BRAK, STUN plus	<b>EYE</b> 3225 3225 162 30-60 none OAKE, STONE, RUB, XXX
<b>FIGHTER</b> 3420 3420 200 40-80 none RUB, HEAL, plus	<b>FIRE</b> 1620 800 276 50-100 FIRE OAKE, FIRE, RUB, BANE, SLEP, STUN, plus	<b>FROST DRAGON</b> 1701 2000 200 53-106 LIT, FIRE OAKE, ICE, BANE, BRAK	<b>FROST GATOR</b> 1890 2000 142 56-112 LIT OAKE, FIRE	<b>FROST GIANT</b> 1752 1752 352 60-120 FIRE ICE	<b>FROST WOLF</b> 402 200 93 25-50 FIRE ICE	<b>GARGOYLE</b> 132 80 80 12-24 none OAKE	<b>GARLAND</b> 130 250 106 15-30 none plus	<b>GAS DRAGON</b> 4068 5000 352 72-144 ICE OAKE POISON, GAS, plus	<b>GATOR</b> 816 900 184 42-84 LIT OAKE, FIRE	<b>GEIST</b> 117 117 56 8-16 OAKE FIRE, ICE, RUB, BANE, plus
<b>GHOST</b> 990 990 180 93-186 FIRE OAKE, ICE, RUB, BANE, plus	<b>GHOUL</b> 93 50 48 8-16 FIRE OAKE, ICE, RUB, BANE, plus	<b>GIANT</b> 879 879 240 38-76 none none	<b>GREAT PEDE</b> 2244 1000 320 73-146 ICE, FIRE none	<b>GREEN MEDUSA</b> 1218 1218 68 20-40 FIRE OAKE, ICE, STONE	<b>GREEN OGRE</b> 282 300 132 23-46 none none	<b>GREY IMP</b> 18 18 16 8-16 none none	<b>GREY NAGA</b> 3489 4000 420 7-14 none LIT, HOLD, DARK, SLEP, plus	<b>GREY SHARK</b> 2361 600 344 50-100 LIT OAKE, FIRE	<b>GREY WOLF</b> 93 22 72 14-28 none none	<b>GREY WORM</b> 1671 400 280 50-100 ICE OAKE, FIRE, OAKE
<b>GUARD</b> 1224 400 200 25-50 none RUB, BANE, STUN, plus	<b>HYDRA</b> 915 150 212 30-60 none none	<b>HYENA</b> 288 72 120 22-44 none none	<b>IGUANA</b> 153 50 92 18-36 none none	<b>IMAGE</b> 231 231 86 22-44 FIRE OAKE, ICE, RUB, BANE, STUN, SLEP, plus	<b>IMP</b> 6 6 8 4-8 none none	<b>IRONGOL</b> 6717 3000 304 93-186 none LIT, ICE, FIRE, STUN, BANE, RUB, plus	<b>JIMERA</b> 4584 5000 350 40-80 ICE OAKE, FIRE, FIRE, BANE, BRAK, plus	<b>KYZOKU</b> 60 120 50 14-28 none OAKE	<b>LOBSTER</b> 639 300 148 35-70 LIT OAKE, FIRE	<b>MADPONY</b> 63 15 64 10-20 none none
<b>MAGE</b> 1095 1095 105 26-52 none RUB, LIT, STUN, FIRE, plus	<b>MANCAT</b> 603 800 110 20-40 OAKE, LIT, FIRE, STONE, RUB, XXX, plus	<b>MANTICOR</b> 1317 650 164 22-44 none OAKE	<b>MEDUSA</b> 699 699 68 20-40 none STONE	<b>MUCK</b> 255 70 76 30-60 LIT OAKE, LIT, RUB, BANE, BRAK, STUN, etc.	<b>MUDGOL</b> 1257 800 176 64-128 none LIT, ICE, FIRE, STUN, FAST	<b>MUMMY</b> 300 300 80 30-60 FIRE ICE, RUB, BRAK, SLEP	<b>NAGA</b> 2355 2355 356 9-18 LIT OAKE, FIRE LIT, HOLD, DARK, SLEP, plus	<b>NAOCHO</b> 3189 500 344 35-70 none none	<b>NITEMARE</b> 1272 700 200 30-60 ICE OAKE, FIRE, RUB, BANE, SNORTING (darkness)	<b>OCHO</b> 1224 102 208 20-40 LIT OAKE, FIRE
<b>ODDEYE</b> 42 10 10 4-8 LIT OAKE, FIRE, STUN	<b>OGRE</b> 195 195 100 18-36 none none	<b>OOZE</b> 252 70 76 32-64 ICE, FIRE OAKE, LIT, RUB, BANE, BRAK, STUN, plus	<b>PEDE</b> 1194 300 222 39-78 none none	<b>PERILISK</b> 423 500 44 20-40 ICE OAKE, FIRE, RUB	<b>PHANTOM</b> 1 1 360 120-240 FIRE OAKE, ICE, RUB, BANE, STUN, SLEP, plus	<b>PIRATE</b> 40 40 6 8-16 none none	<b>RED ANKYLO</b> 1428 300 256 60-120 none none	<b>RED BONE</b> 378 378 144 26-52 FIRE ICE, RUB, BANE, BRAK, STUN, SLEP, plus	<b>RED CARIBE</b> 546 46 172 37-74 none none	<b>RED DRAGON</b> 2904 4000 248 75-150 ICE, BANE, BRAK OAKE, FIRE, FIRE, plus
<b>RED GARGOYLE</b> 387 387 94 10-20 OAKE, ICE, FIRE FIRE, HOLD, plus	<b>RED GIANT</b> 1506 1506 300 73-146 ICE FIRE	<b>RED HYDRA</b> 1215 400 182 20-40 ICE FIRE, FIRE	<b>RED SAHAG</b> 105 105 64 15-30 LIT OAKE, FIRE	<b>ROCKGOL</b> 2385 1000 200 70-140 LIT, ICE, FIRE, STUN, plus	<b>SABER TOOTH TIGER</b> 843 500 200 24-48 none none	<b>SAHAG</b> 30 30 28 10-20 LIT OAKE, FIRE	<b>SAND WORM</b> 2683 900 200 46-92 none OAKE	<b>SAURIA</b> 1977 658 196 30-60 none STONE	<b>LICH</b> 2200 3000 400 40-80 FIRE ICE, RUB, BANE, STUN, SLEP, BRAK, plus	<b>KARY</b> 2475 3000 600 40-80 STUN, LIT, plus LIT, ICE, FIRE, BANE, plus
<b>SCORPION</b> 225 70 84 22-44 none none	<b>SCUM</b> 84 20 24 1-2 ICE, FIRE OAKE, LIT, RUB, BANE, BRAK, STUN, plus	<b>SEASNAKE</b> 957 600 224 35-70 LIT OAKE, FIRE	<b>SEATROLL</b> 852 852 216 40-80 LIT OAKE	<b>SENTRY</b> 4000 2000 400 102-204 LIT OAKE, ICE, FIRE, RUB, plus	<b>SHADOW</b> 90 45 50 10-20 FIRE OAKE, ICE, RUB, BANE, STUN, SLEP, plus	<b>SHARK</b> 267 66 120 22-44 LIT OAKE, FIRE	<b>SLIME</b> 1101 900 156 49-98 none none	<b>SORCEROR</b> 822 999 112 1-2 none plus	<b>SPECTER</b> 150 150 52 20-40 FIRE OAKE, ICE, RUB, BANE, STUN, SLEP, plus	<b>SPHINX</b> 1160 1160 228 23-46 none OAKE
<b>SPIDER</b> 30 8 28 10-20 none none	<b>TIGER</b> 438 108 132 73-146 none none	<b>T REX</b> 7200 600 600 115-230 none none	<b>TROLL</b> 621 621 184 24-48 FIRE none	<b>TYRO</b> 3387 502 408 65-130 none none	<b>VAMPIRE</b> 1200 2000 156 76-152 FIRE OAKE, ICE, RUB, BANE, BRAK, SLEP, plus	<b>WARMECH</b> 32000 32000 1000 128-256 none OAKE, LIT, FIRE, ICE, BANE, BRAK, plus	<b>WATER</b> 1962 800 300 69-138 ICE OAKE, BANE, STUN, plus	<b>WEREWOLF</b> 135 67 68 14-28 none none	<b>WIZARD</b> 276 300 84 30-60 none OAKE, FIRE, STUN, BANE, SLEP, plus	<b>WIZARD MUMMY</b> 984 1000 188 43-86 FIRE ICE, RUB, BRAK, SLEP
<b>WIZARD OGRE</b> 723 723 144 23-46 OAKE RUSE, DARK, SLEP, plus	<b>WIZARD SAHAG</b> 882 882 204 47-94 LIT OAKE, FIRE	<b>WIZARD VAMPIRE</b> 2385 3000 300 90-180 FIRE OAKE, ICE, RUB, BANE, STUN, LIT, ICE, STUN, plus	<b>WOLF</b> 24 6 20 8-16 none none	<b>WORM</b> 4344 1000 448 65-130 none OAKE	<b>WRAITH</b> 432 432 114 40-80 FIRE OAKE, ICE, RUB, BANE, STUN, SLEP, plus	<b>WYRM</b> 1218 502 260 40-80 none OAKE	<b>WYVERN</b> 1173 50 212 30-60 none OAKE	<b>ZOMBIE</b> 24 12 20 10-20 FIRE OAKE, ICE, RUB, BANE, plus	<b>ZOMBULL</b> 1050 1050 224 40-80 none none	<b>ZOMBIE DRAGON</b> 2331 999 268 56-112 FIRE OAKE, ICE, RUB, BANE, plus

**CHAOS**

0

0


2000

100-200

plus \_\_\_\_\_ plus \_\_\_\_\_

plus \_\_\_\_\_

This is CHAOS. The battle with him is entirely up to you. Do not fear, you can prevail!



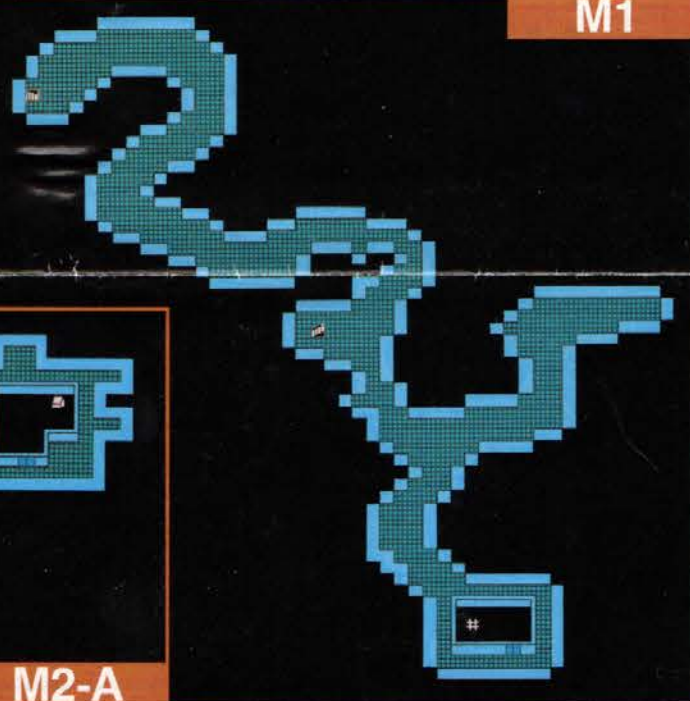
# FINAL FANTASY™

## Dungeon Maps

These maps will help you get through some of the treacherous dungeons in Final Fantasy.

### Marsh Cave

This is where the Lone King has directed you to look for the CROWN.

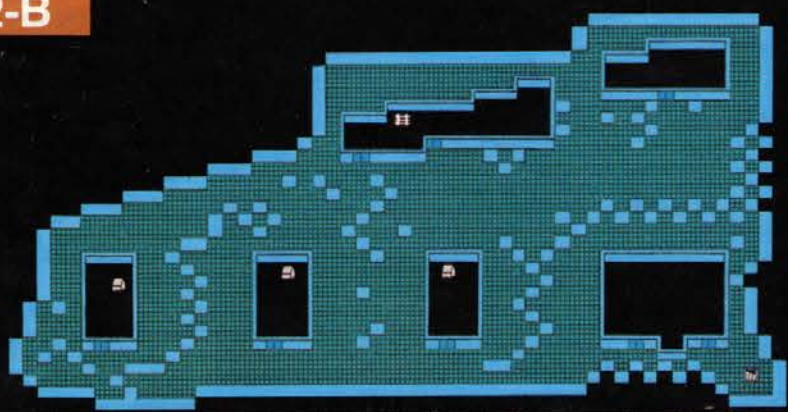


M1

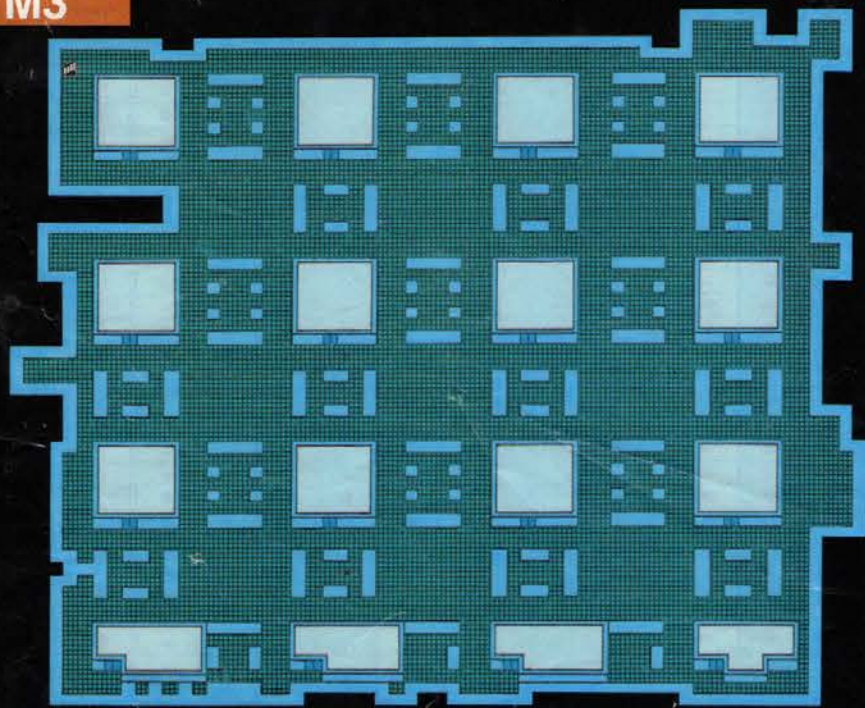


M2-A

M2-B



M3



E1



E2

E3



E4



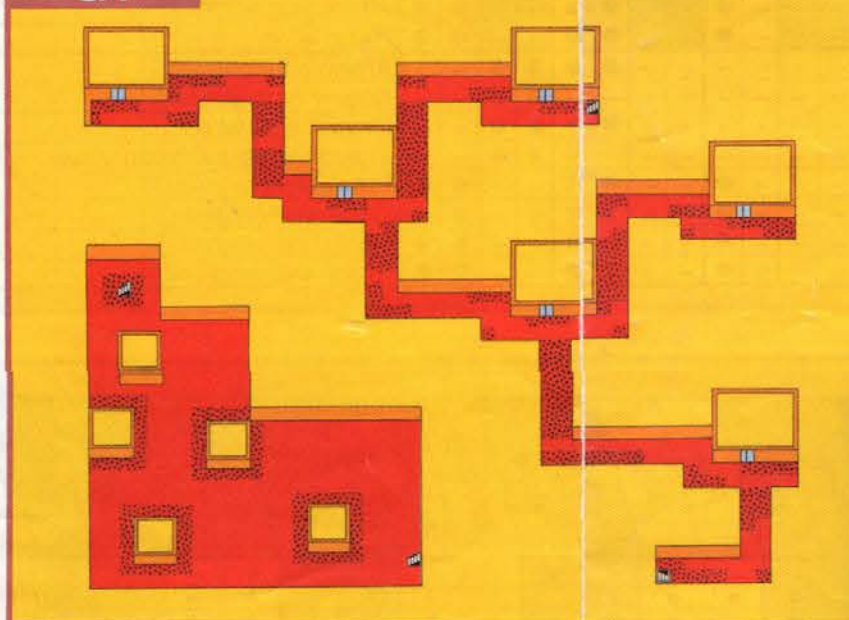
### Earth Cave

The residents of Melmond said that this is the source of the earth's rotting. You'll battle the Earth Fiend here.

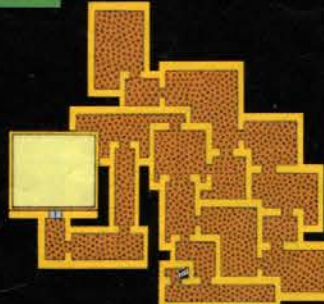
G1



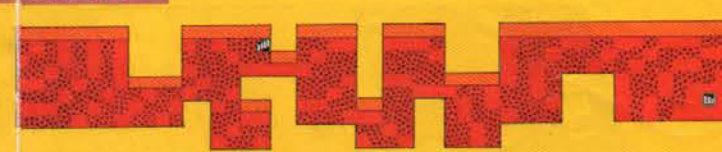
G4



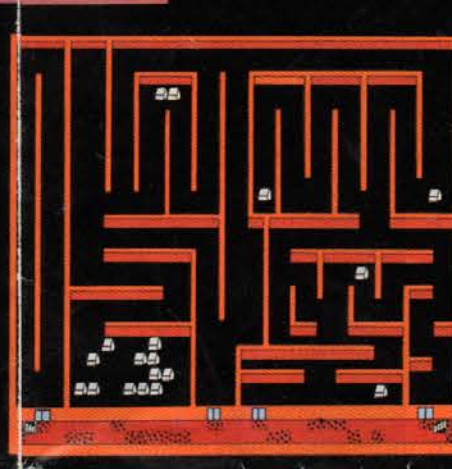
E5



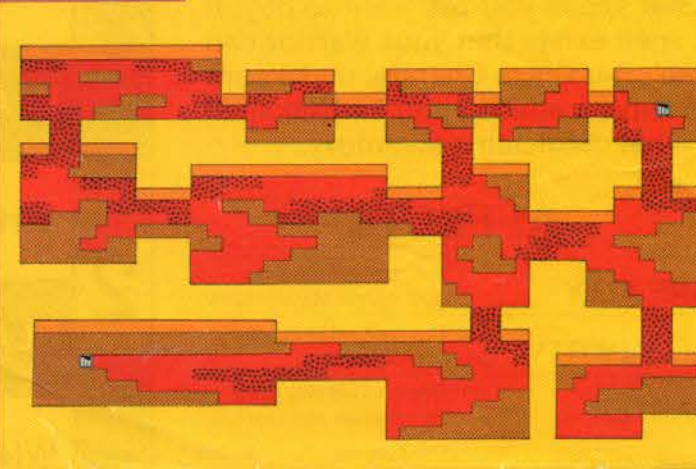
G3-A



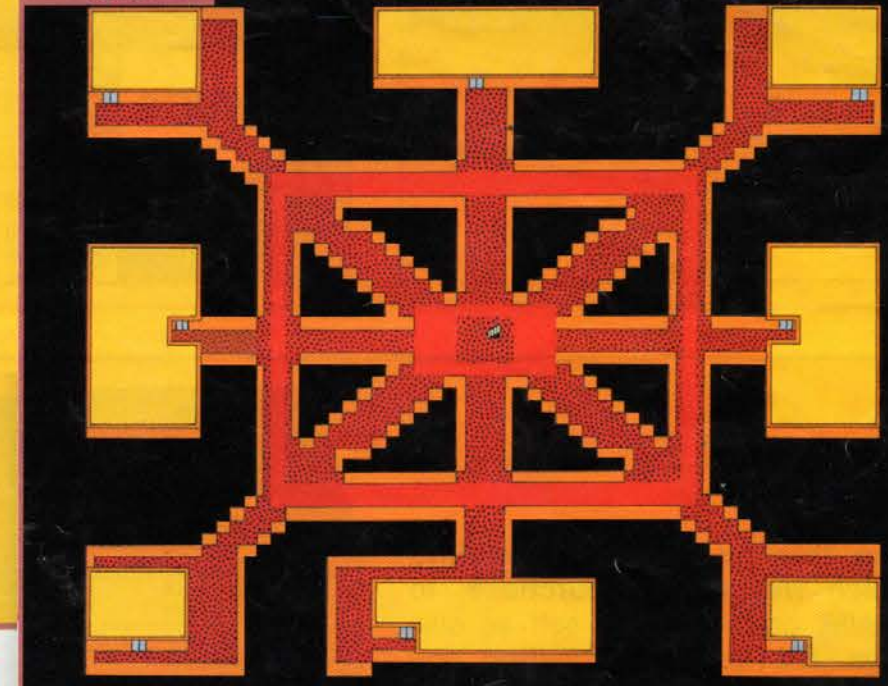
G2



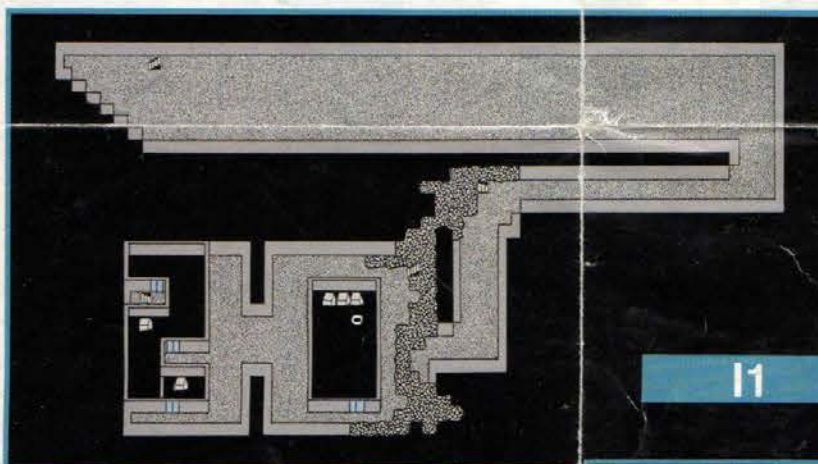
G3-B



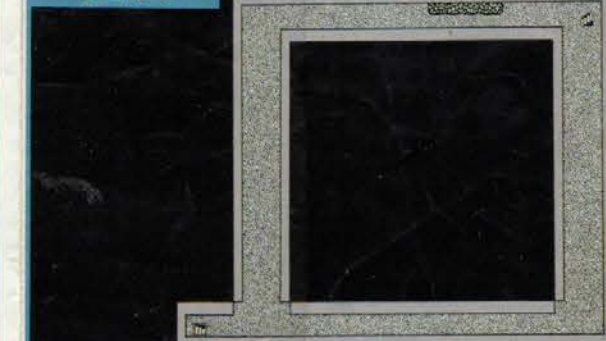
G5



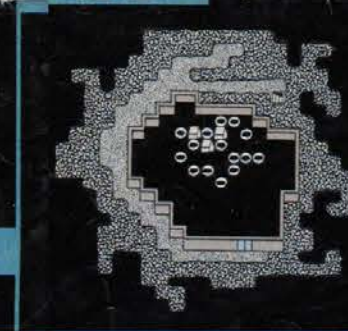
I1



I2-A



I2-B



I3-A



I3-B



### Gurgu Volcano

Fire Cave

According to the Sages in the town of Crescent Lake, this is where the Fire Fiend can be found.

### Ice Cave

An apprentice Sage has hinted that this is where the FLOATER can be found.

