

Wonder Boy IIITM The Dragon's Trap



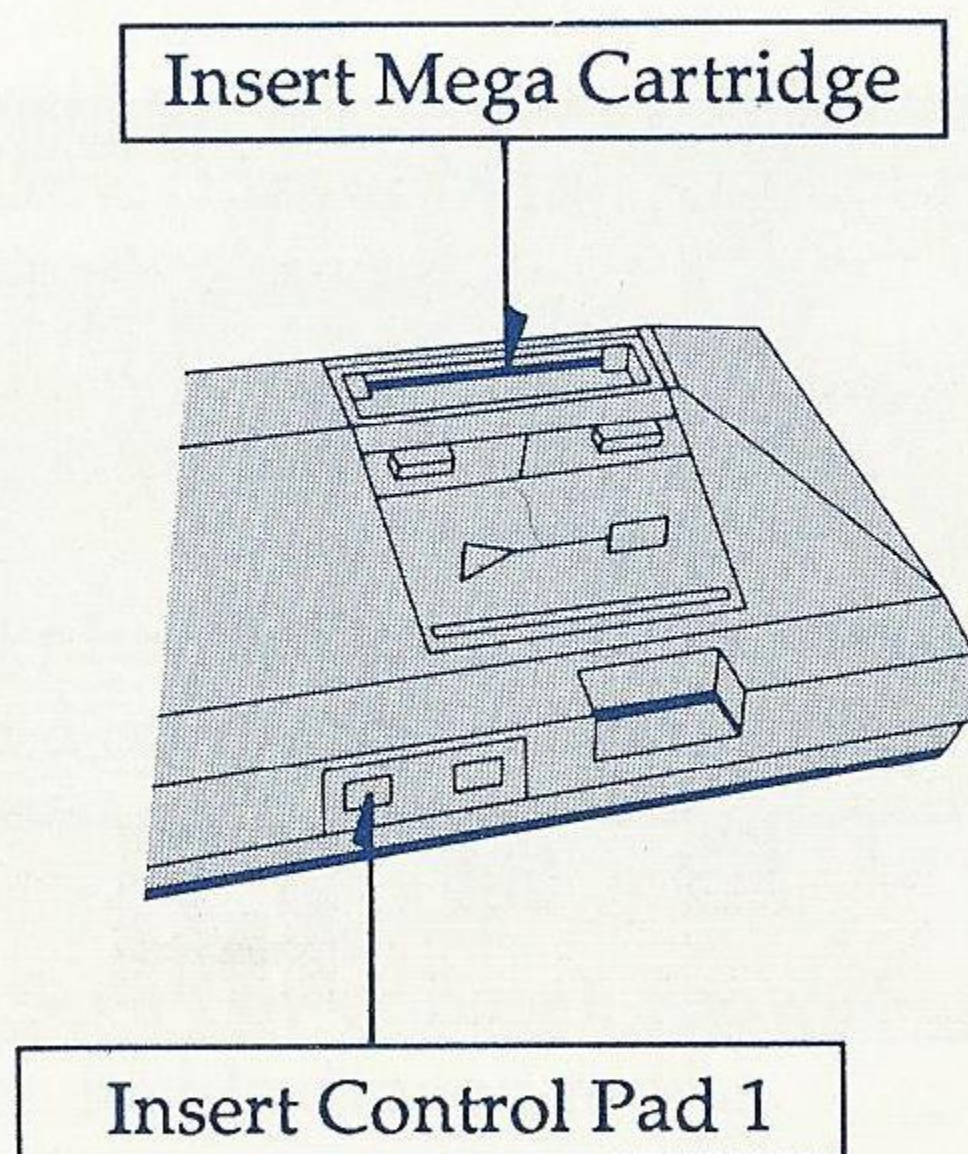
Wonder Boy has been cursed! The amazing kid has crossed paths with the MEKA Dragon. He critically wounds the ugly beast, but its final breath turns Wonder Boy into a Lizard-Man! The young fighter must now seek out the Salamander Cross, the only force that can restore him to his normal self. But first he must find it...



Loading Instructions: Starting Up:

- 1) Make sure the power switch is OFF.
- 2) Insert the game cartridge in the Power Base (shown below) as described in your SEGA SYSTEM manual.
- 3) Turn the power switch ON. If nothing appears on the screen, turn the power switch OFF, remove the cartridge, and try again.
- 4) At the Title Screen, to start the game, press Button 1 or Button 2.

IMPORTANT: Always make sure that the Power Base is turned OFF when inserting or removing your Mega Cartridge.

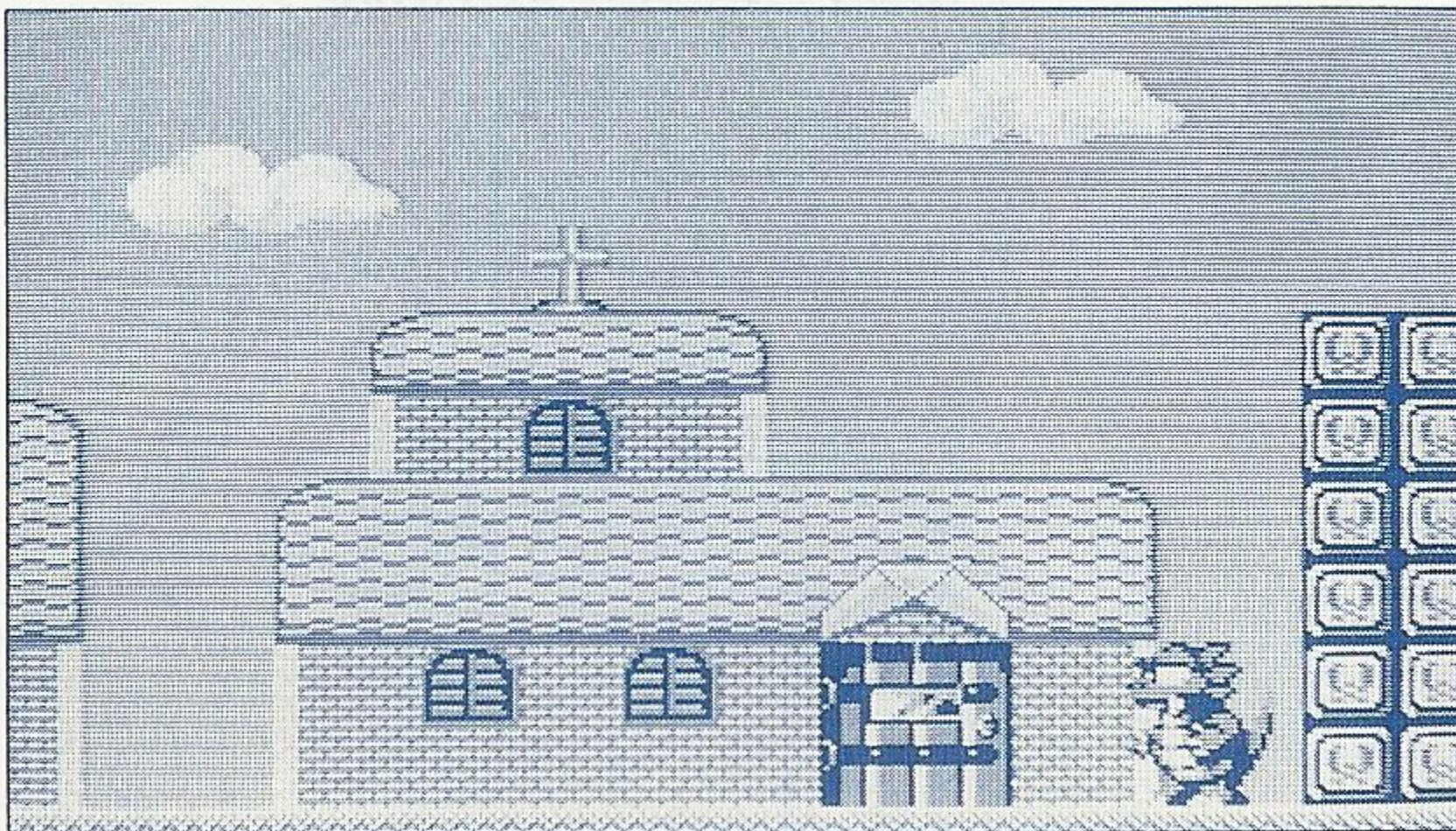


Wonder Boy™ III – The Dragon's Trap

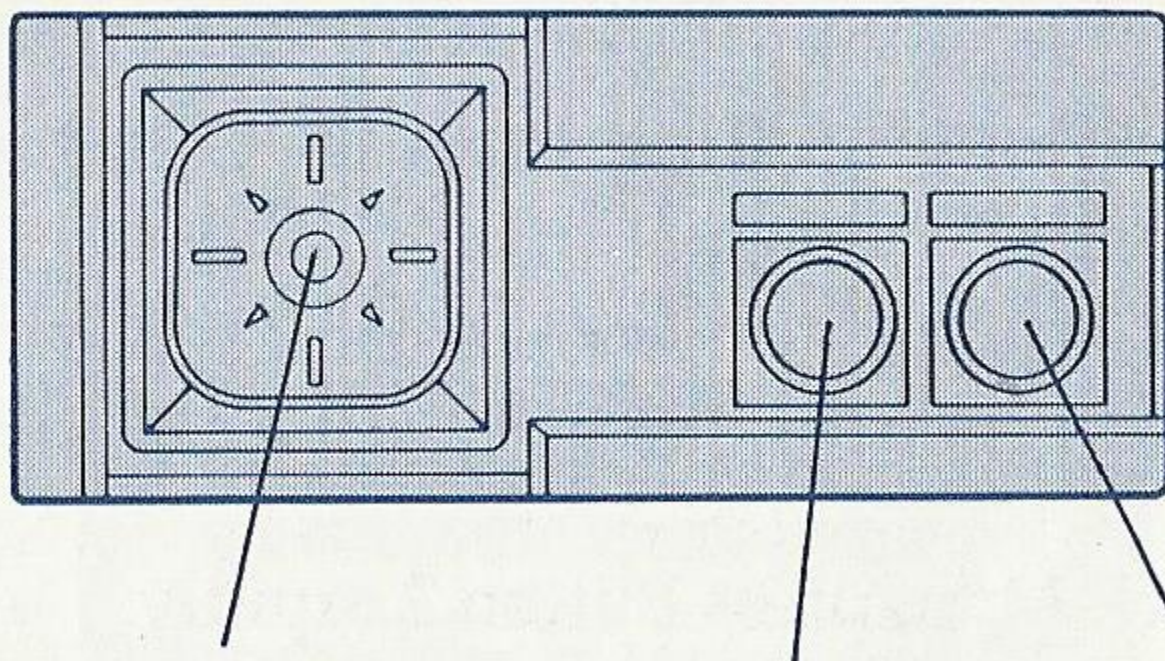
Curses! After having defeated the mighty MEKA dragon, Wonder Boy discovers to his dismay that a terrible spell has been cast on him by the mortally wounded beast: He's been changed into a Lizard-Man!

Now the only thing that can save him is the Salamander Cross. Legend has it that the magical cross has been hidden by the Vampire Dragon deep within Monster Land. To get the cross and change Wonder Boy back to his original appearance, you'll have to journey through desert, jungles, under the deep blue sea and even underground. And in each of these lands, you'll have to overcome an evil dragon!

Guide Wonder Boy through Monster Land, but be prepared to battle some of the most deadly, frightening creatures you've ever faced. Each step can mean death. Each battle may be the last. Above all, be prepared for change!



Taking Control



Directional Button
(D-Button)

Button 1

Button 2

Use your Control Pads to do the following:

D-Button: Select items in Status Screen by moving hand-shaped cursor; move right or left; stoop down (for Hu-Man or Lizard-Man only); go inside door by pushing the button up.

Button 1: Attack with sword in direction Wonder Boy is facing, or blows flame (Lizard-Man). Also returns from the Status Screen to the play mode.

Button 2: Jumps; confirms a cursor selection.

D-Button DOWN plus Button 2: Shoots weapon item. (Item must be highlighted on the Status Screen before it can be used.)

Pause Button (on Sega Power Base): Shows Status Screen. Has pause function inside dragon rooms.

Special Operations

Attach to a Wall: For Mouse-Man, press Button 2 and the D-Button in the direction of the wall. You will cling.

Walk on the Wall or Ceiling: Press the D-Button in the desired direction.

Swim: For Piranha-Man, press Button 2 rapidly.

Fly: For Hawk-Man, press Button 2 rapidly.

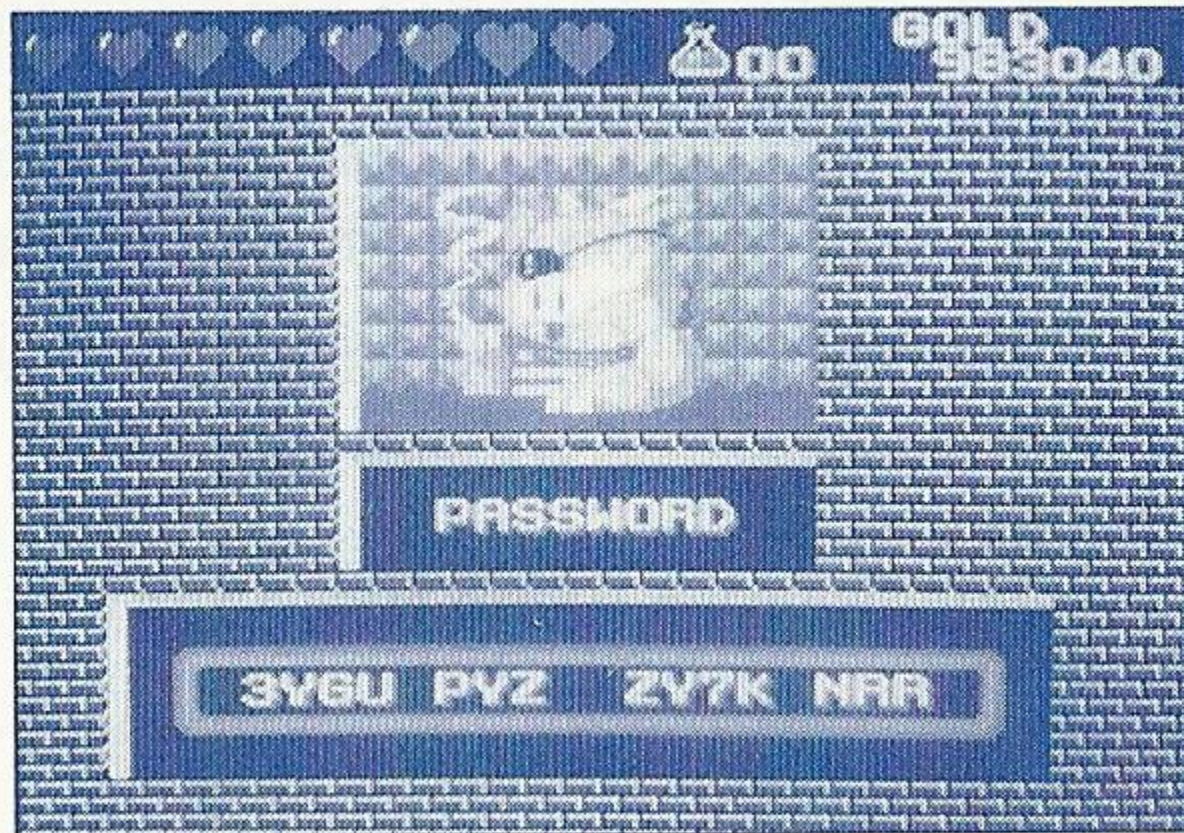
Getting Started

When playing the game for the first time, select **NEW GAME**. (If you select **CONTINUE** by mistake, press the reset button to try again.) Advance Wonder Boy through the castle in the opening scene, trying to find your way to the bottom level and the dragon's lair. There is a door at the end of the hallway in the basement. When you enter the door, you'll begin your battle with the **MEKA** dragon.

If you succeed in defeating the dragon and escaping from the self-destructing castle, you'll be transported to the town. From now on, all adventures in this game will begin from the town.

If you are defeated during the course of the game, you have two options. You may either use **CONTINUING PLAY**, which will put you immediately back into the game at the town (see **CONTINUING PLAY**) or you may use a **PASSWORD** to continue at a later time.

Passwords



Passwords allow you to get back into a game after you have died and after the power has been turned OFF, keeping your present form, gold and all the weapons and armor you possess.

You can get passwords in the church in town. Write them down carefully! Passwords are used when starting from the Title Screen. Select CONTINUE and press Button 2.

A password column will appear on screen when you select CONTINUE. Press the D-Button left or right to move the cursor over each of the 14 characters. Press the D-Button up or down to change the letters to the correct sequence; from 0 – 9 and A – Z. Do not be alarmed if you notice some letters missing from the alphabet. All passwords you receive can be entered. When finished, move the cursor to END and press Button 2. You will enter the town with everything you had except magical items and life potions.

Playing The Game

The object of Wonder Boy III is to find the Salamander Cross. Starting from the town, you must explore different areas for visual clues and items you need to finish the game. At the end of each area awaits a dragon. When you defeat these dragons your appearance will change, as well as your fighting abilities.

Accept these changes. Besides being fun, they are necessary to finish the game!

You first start out from the town as a Lizard-Man. You blow flame to defeat creatures. After knocking down enemies, money or weapons appear, which you can pick up by touching them.

In the course of the game you will find many doors. If the D-Button is pushed up when you stand in front of a door, it will open and you can examine what is inside. If it is a shop or hospital, you can buy items or get medical treatment to restore your life, provided you have enough gold!

Note: If a Boss Dragon is defeated, gold will jump out of a blue flame. Get as much gold as you can before you are touched by the blue flame. When the flame touches you, your appearance will change!

Transformations

Here are the characteristics of the shapes you will find yourself in:



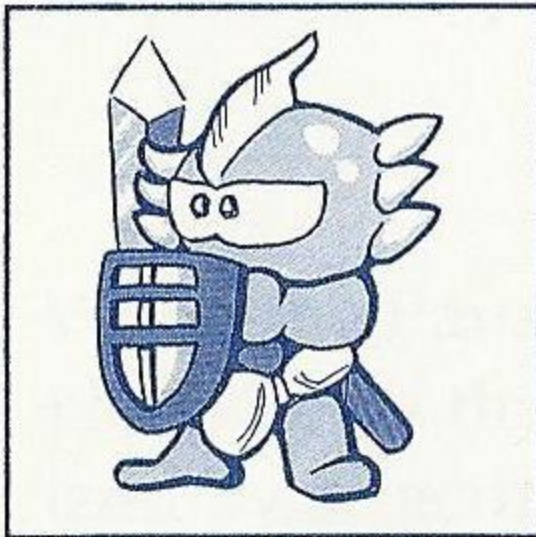
Lizard-Man: AP: 0/DP: 0/CP: 0

Blows flame. When money is accumulated, he can become stronger by arming himself with purchased items. When attacking a short enemy, press Button 1 while pressing the D-Button downwards.



Mouse-Man: AP: 60/DP: 20/CP: 40

Because his body is small, he can enter places other creatures cannot. He can also walk on walls and ceilings made of "mouse block."



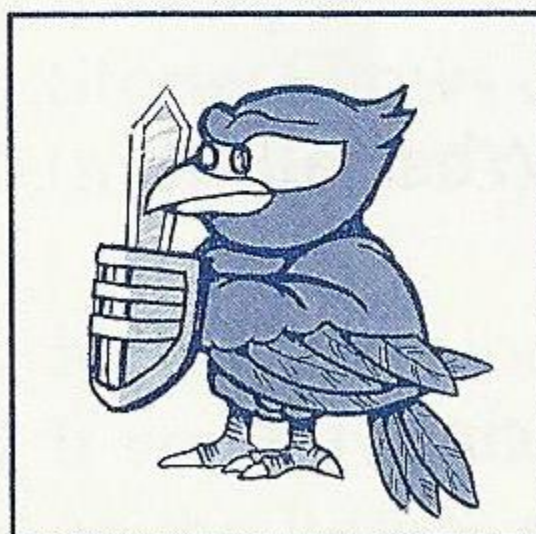
Piranha-Man: AP: 90/DP: 50/CP: 50

Can swim freely in water. Because of this, there are some places only Piranha-Man can enter.



Lion-Man: AP: 90/DP: 50/CP: 50

A tough customer, he attacks by swinging a sword from his head to the tips of his paws.



Hawk-Man: AP: 30/DP: 10/CP: 20

Can soar freely through the air. (Although he can be hurt when his wings get wet.) There are places only Hawk-Man can enter because of his flying ability.

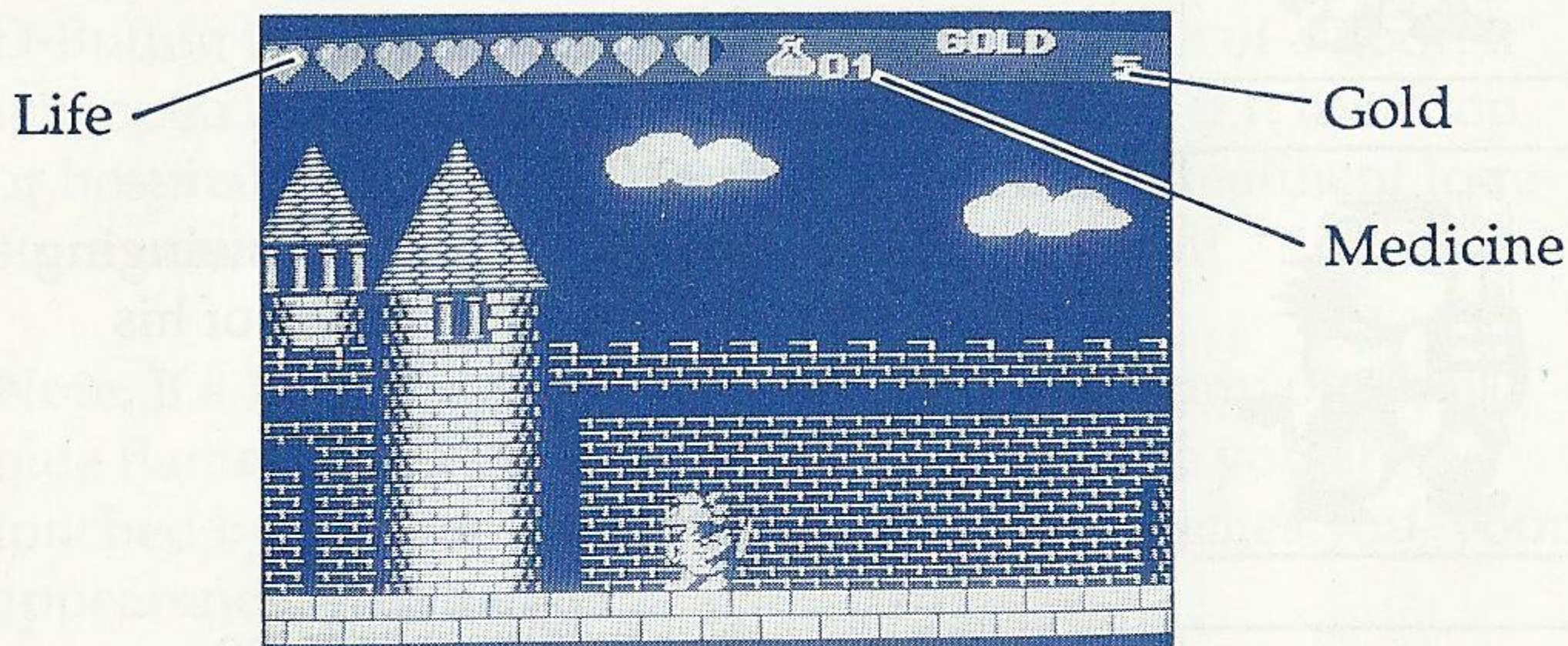
When your appearance changes, so do your abilities. Ability is measured as follows:

AP: Attacking Power. The higher the value, the larger will be the extent of damage that can be inflicted. Different swords have different values.

DP: Defense Points. The higher the value, the better the protection from an attack. Different shields and armor have different values.

CP: Charm Points. Value depends on accumulated points for different appearances, types of armor, and the number of Charm Stones. If this value is low, effective equipment cannot be purchased in the shop.

The Game Screen



Life: Shows the strength of Wonder Boy's life. When all the red hearts change to black, the game ends.

Medicine: Shows the number of recovery medicines that Wonder Boy has in his possession.

Gold: Amount of gold currently in Wonder Boy's possession. When gold is taken, its value is displayed for a few seconds.

Dragon HP: Remaining percent of a boss dragon's life points. This displays during battle with the bosses.

Status Screen



When the Pause button is pressed, a Status Screen appears. Here, items that you've obtained can be examined and utilized by selecting with the D-Button and pressing Button 2. When Button 1 is pressed, the screen returns to normal play.

Arm. List: Shows list of available swords.

Shield List: Shows list of available shields.

Armor List: Shows list of available armor.

Stone: Shows current number of Charm Stones (maximum 99).

Key: Opens locked doors. Can only have one key at all times. If you have a key, the door can be opened without selecting it on the Item Screen.

Equipment

There are several kinds of swords, shields and helmets available. You can put on and take off most equipment any number of times. When equipment is obtained, its name shows up on the Equipment Screen, but it does not mean that you are currently wearing it.

To wear a particular piece of equipment, you must first select it with the cursor and press Button 2. Its displayed name will change to white to confirm that you are now wearing it. Press Button 1 to return to the Status Screen, and Button 1 again to return to play.

Gold

Purchases in the shop are required if you hope to be strong enough to defeat all your enemies. But you can't purchase needed equipment without first obtaining gold. Earn money by defeating creatures or by opening treasure chests.

Shops

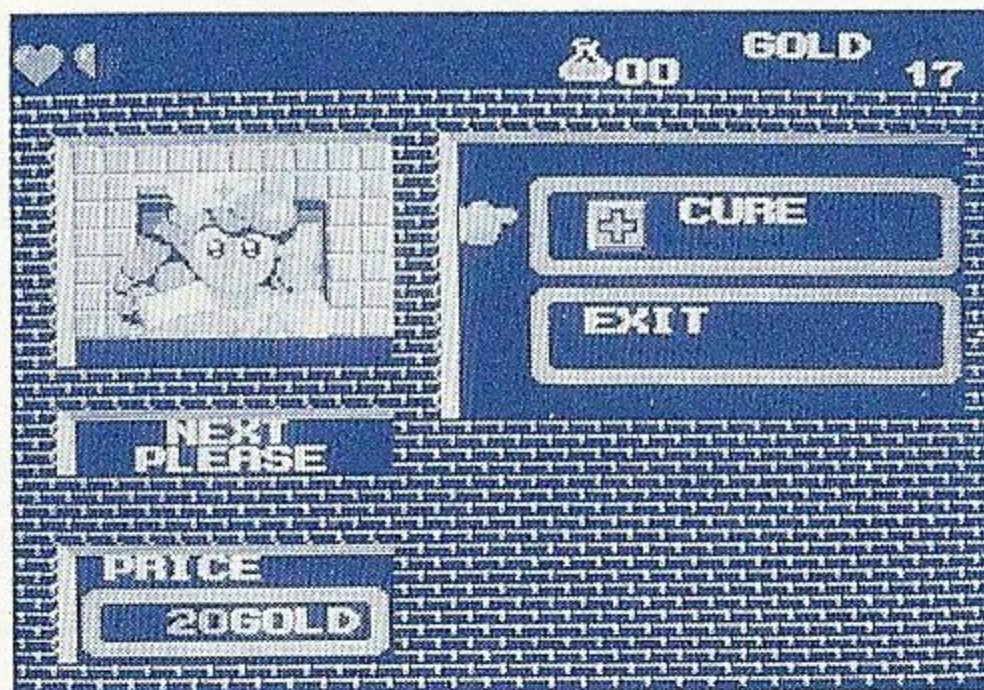


There are many shops available in town or inside caves. You can usually identify a shop as a door with a window on it, although some shops do not have windows.

When you enter a shop, merchandise is displayed. Put the cursor on the item you want, and its price will be displayed on the lower left-hand column. If the price is in red, it means you don't have enough money. If a question mark is displayed on the name of the merchandise, it means you don't have enough charm. If this is the case, you must increase your money and gather more Charm Stones before attempting to shop again.

To leave the shop, put the cursor on EXIT and press Button 1 or Button 2, or simply press Button 1.

Hospital



You can restore life points here, provided you have enough money. Hospitals are rare, so remember their location.

Special Blocks



Jump Block: A block with an arrow. When you jump on top of this block, you are sprung high in the air.



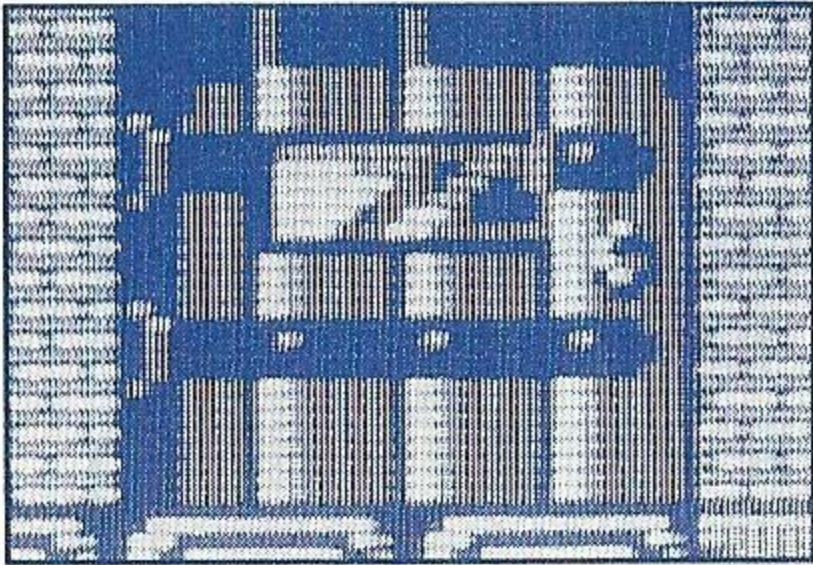
Mouse Block: Checker-patterned block. The Mouse-Man can walk on the walls and ceilings made of these blocks.



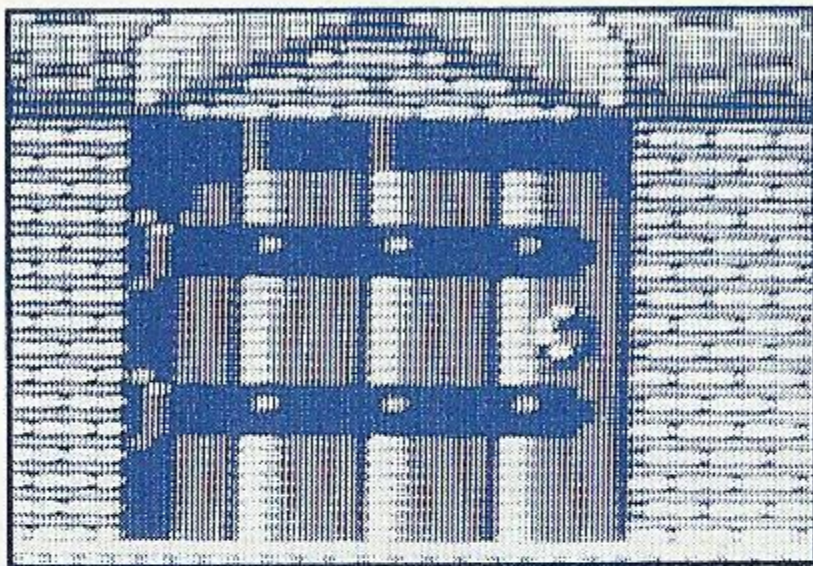
Destructible Block: Can be destroyed with the Thunder Saber.

Doors

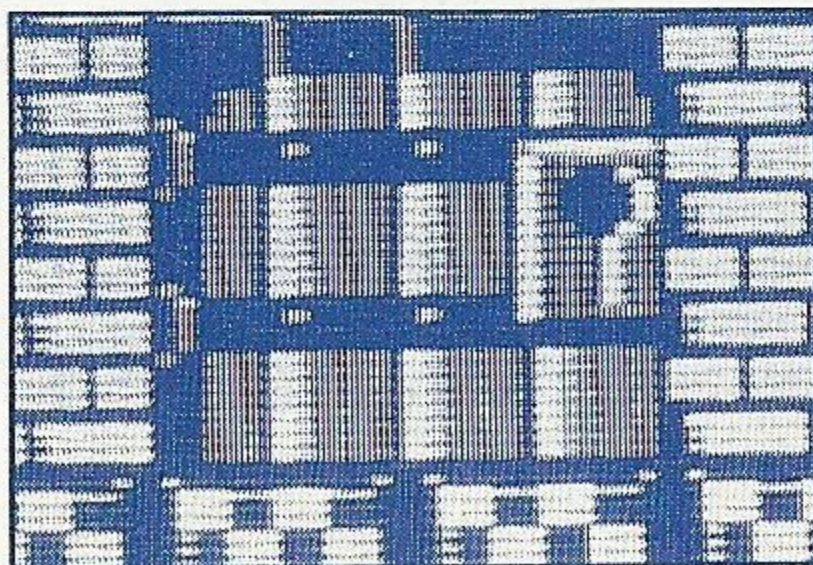
To enter the doors you find in the game, stand in front of the door and press the D-Button up. The different kinds of doors are detailed below:



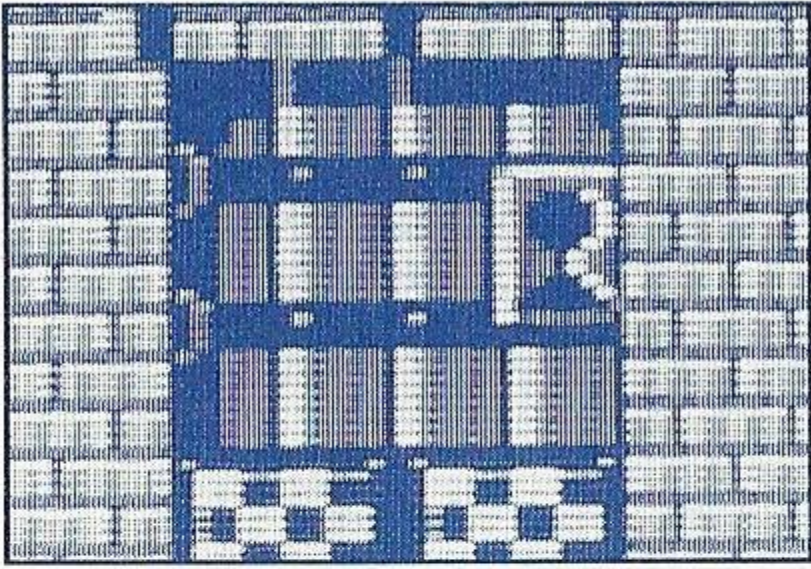
Door with window:
Shops.



Door without a window:
Some rooms with treasure chests or hospitals have this kind of door. Some doors lead to unexpected destinations.



Green door with a lock:
Cannot be opened without a key. Once opened, the key is no longer needed.

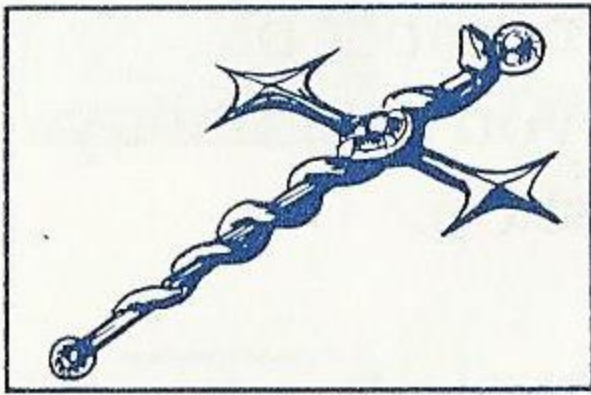


Red door with a lock:

Cannot be opened without a key.
Even when opened, cannot be re-opened without the key.

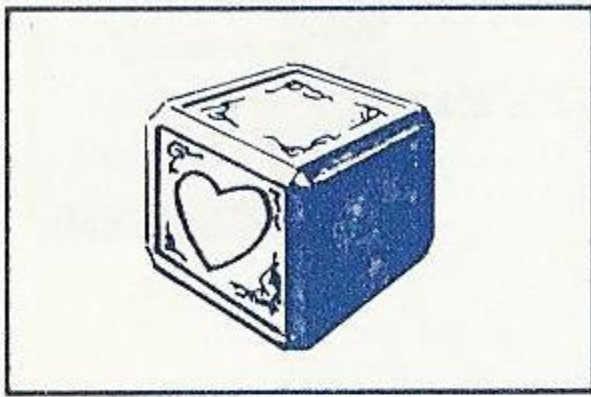
Items

Several important items are necessary to help Wonder Boy. You can get these by defeating creatures, finding them inside treasure chests, or by buying them in shops.

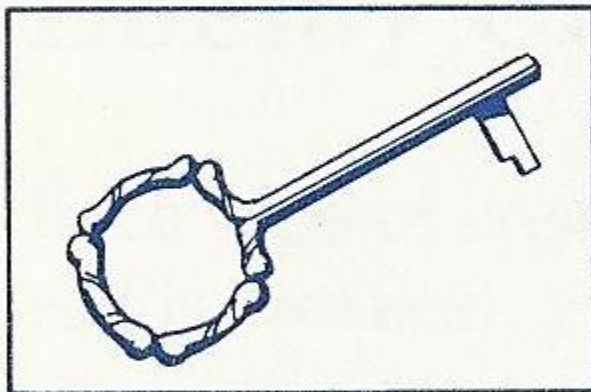


Salamander Cross:

Restores Wonder Boy to human form.

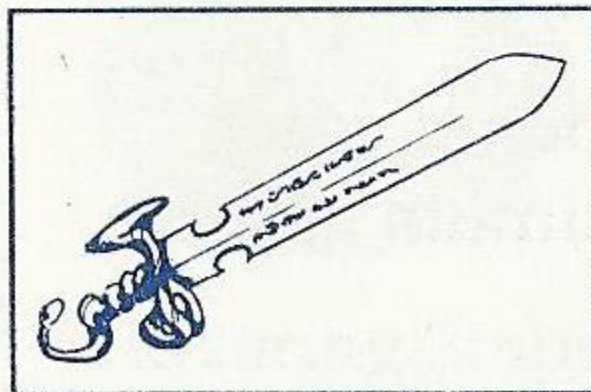


Life Hearts: Increases life capacity by one heart. Hidden in seven treasure chests. (The first one is in the basement of the starting town.)



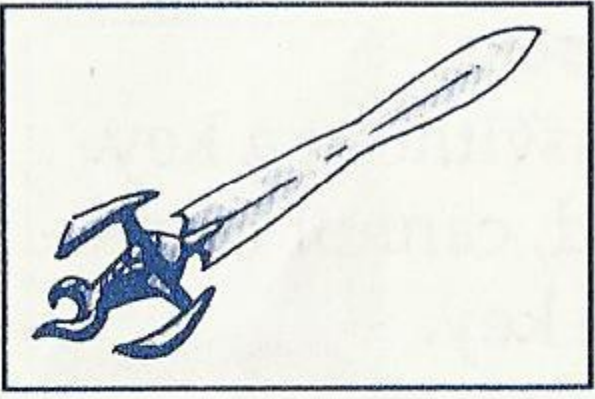
Key:

Every door with a lock can be opened with this key.



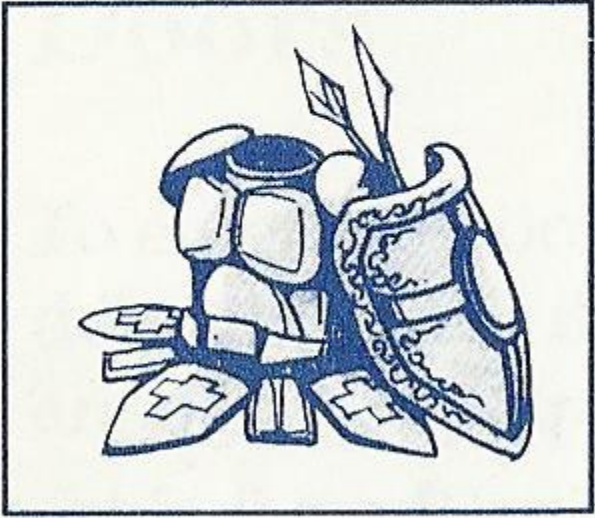
Thunder Saber:

With this item, you can pulverize the Destructible Block.



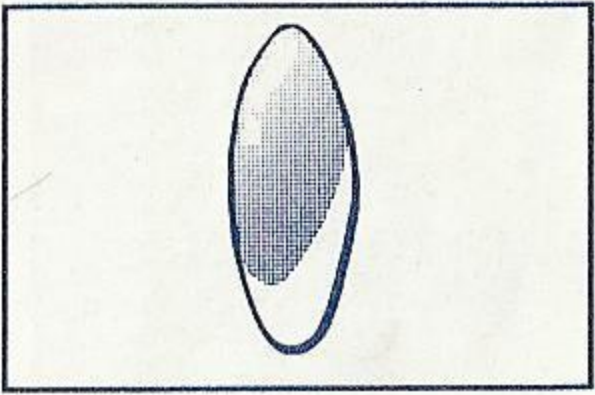
Magical Saber:

In certain places, this sword can actually create stone blocks! You can't finish the game without it.



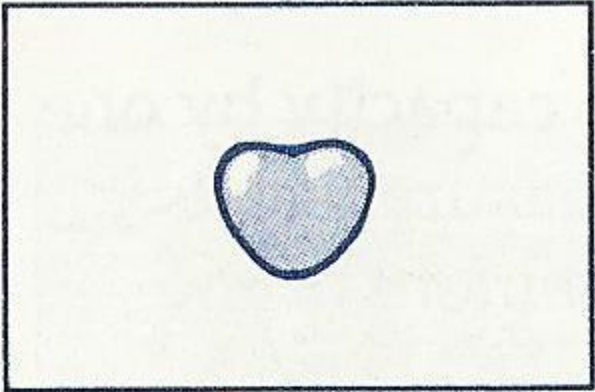
Arms, Shields and Armor:

There are numerous types of swords, shields, and armor available. Some give you increased life, make you impervious to lava or make charm, hearts and money easier to obtain!



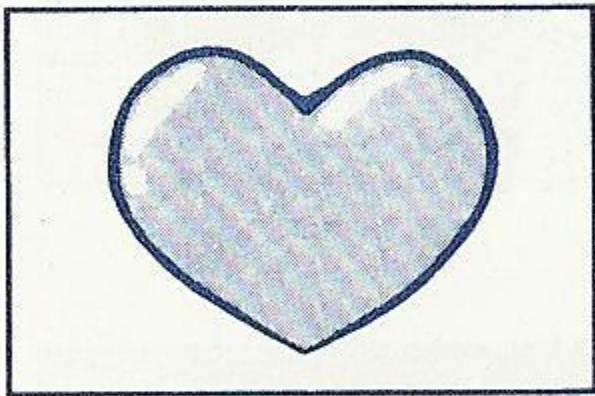
Stone:

Charm Stones. When the number of stones you have is small, you cannot buy certain equipment in the shop.



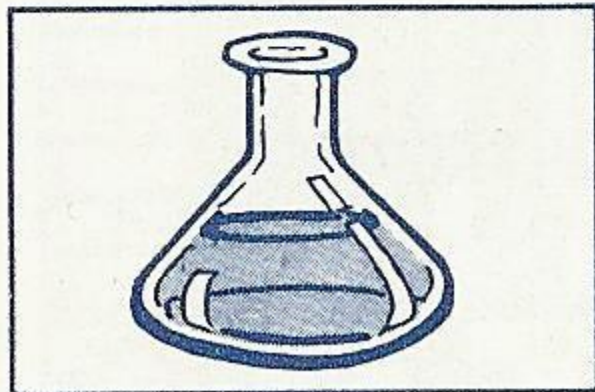
Small Heart:

Life is restored a little.



Large Heart:

Life is restored the most.



Medicine:

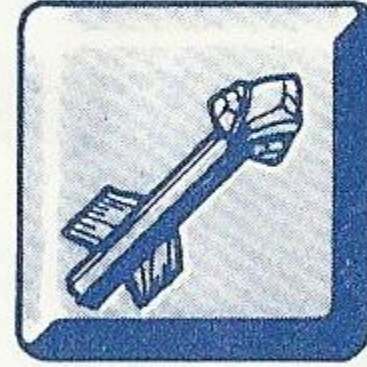
Restores life when heart points reach zero. You can have a maximum of three medicines.

Weapon Items

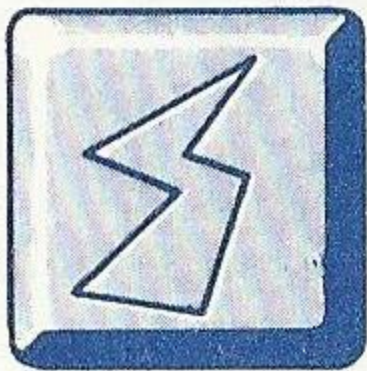
To use weapon items, first select them from the Status Screen. Use them by pressing Button 2 and the D-Button down.



Fireball:
Moves forward and damages any enemy it hits.



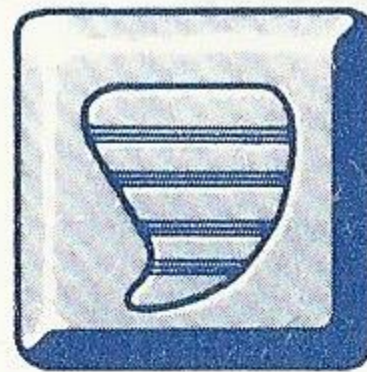
Arrow:
Shoots straight up. Can hit any enemy overhead.



Thunder:
Damages all enemies on screen.



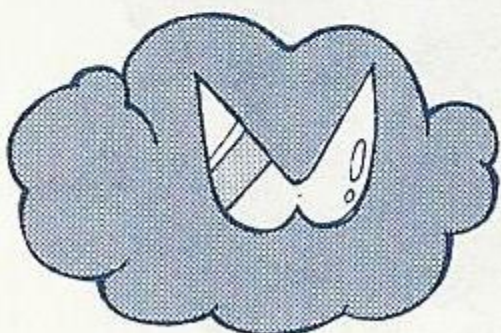
Boomerang:
Flies forward and returns.



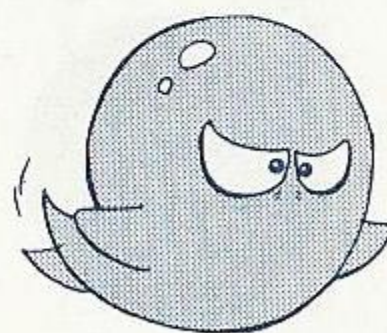
Tornado:
Moves forward. Bounces back after hitting enemy and extinguishes itself.

Enemy Creatures

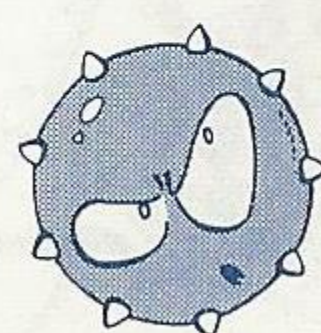
Each type of creature's strength is determined by its color: red is weakest, green is strong, and blue is strongest.



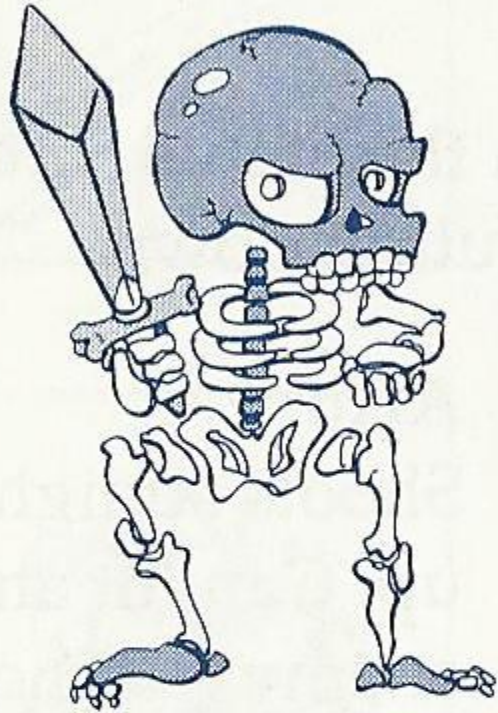
Hovering Smog



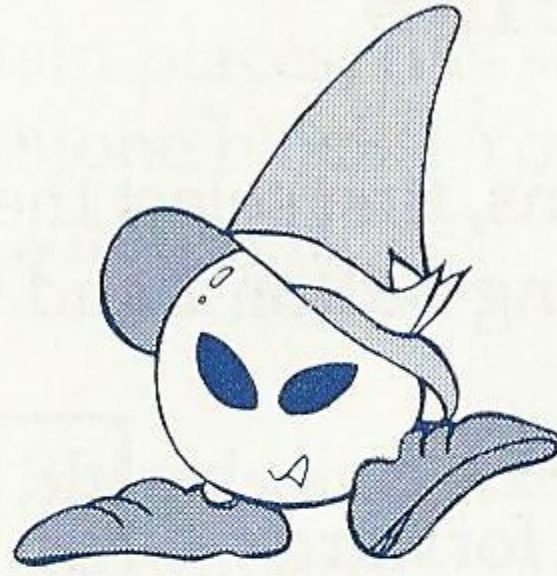
Willow Wisp



Spark



Skeleton



Faerie



Skull



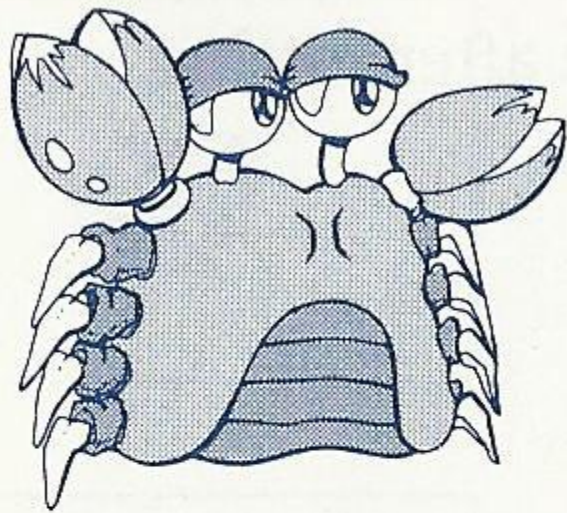
Air Giant



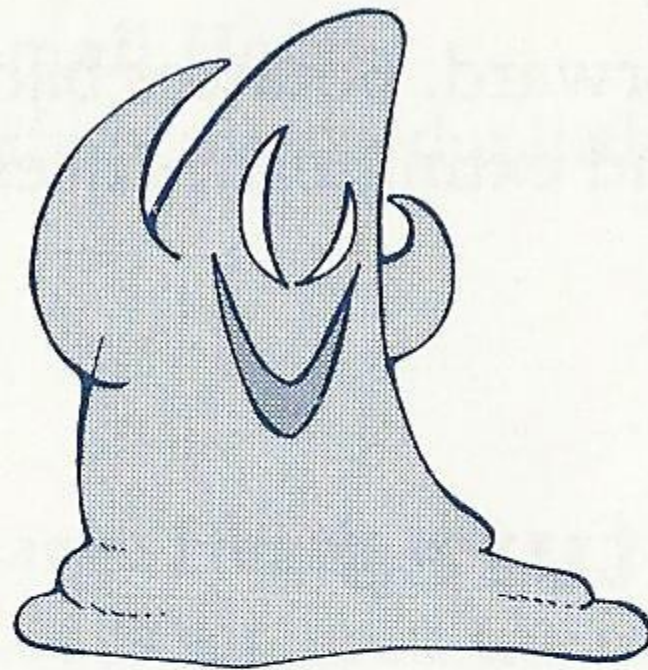
Master Skeleton



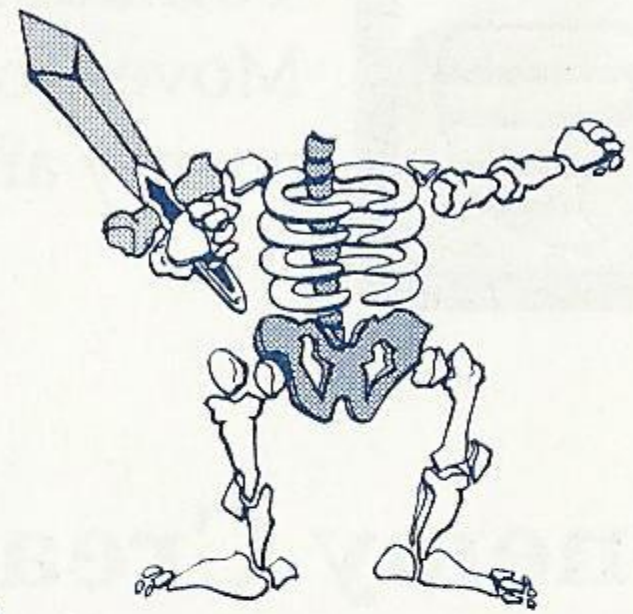
Master Skull



Side Crawler



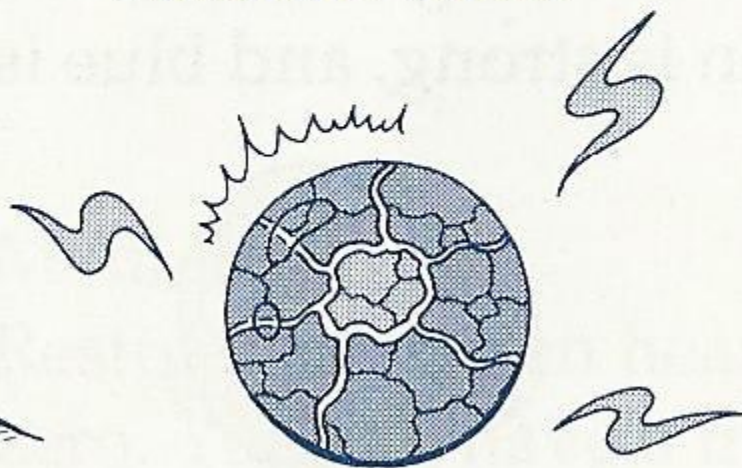
Shadow-Man



Wandering Bone



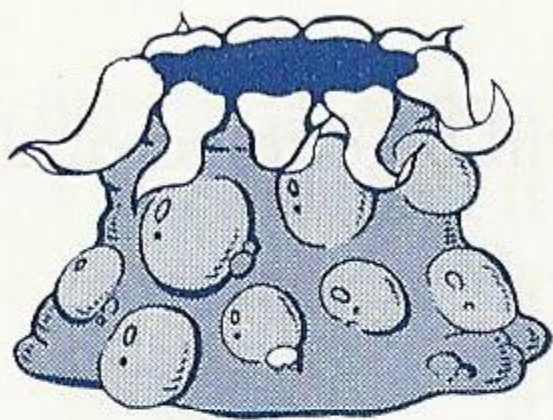
Giant Toad



Fuzzball



Ninja



Roper



Fire Octopus



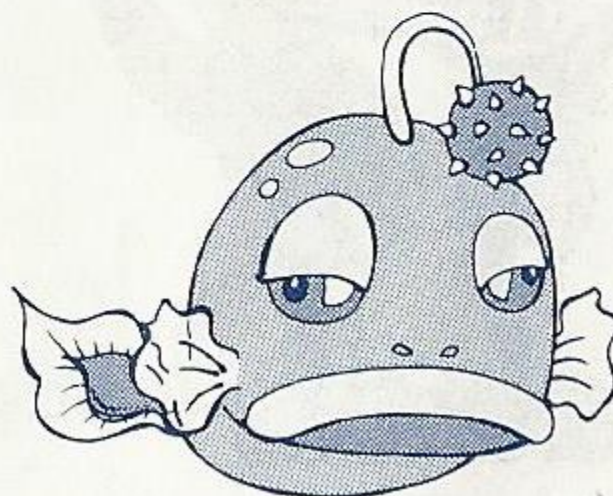
Giant Bat



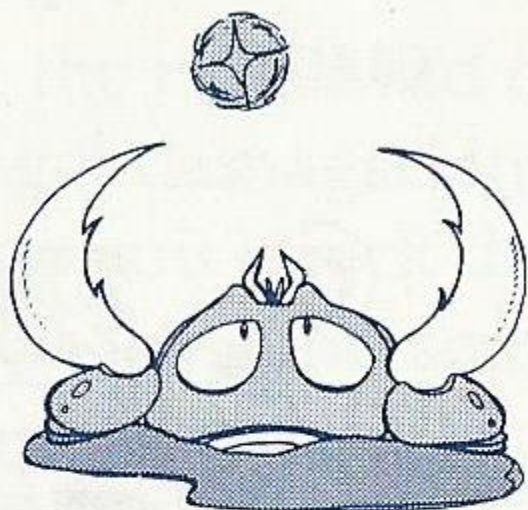
Samurai



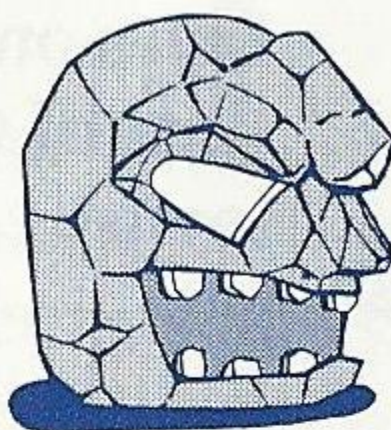
Goblin



Giant Fish



Fire Ant Lion



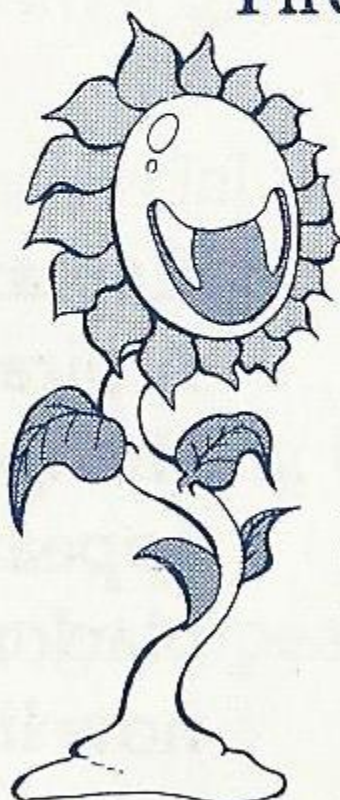
Fire Stone



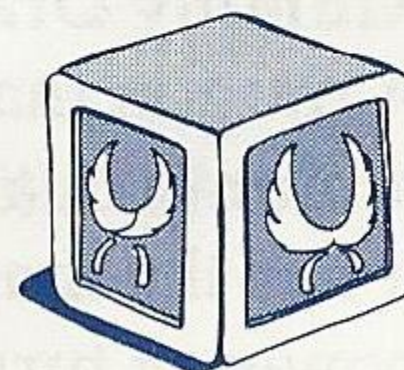
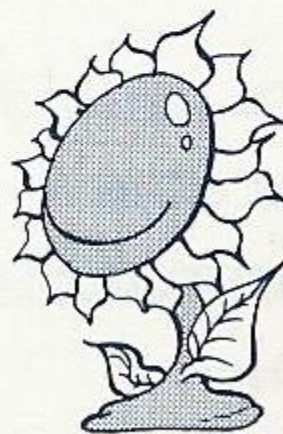
Cyclops



Giant Cobra



Fire Flower



Falling Block

Boss Dragons

Each time you defeat a Boss Dragon, you will be cursed and your appearance will change.



MEKA Dragon:
The dragon that got you into this mess to begin with.



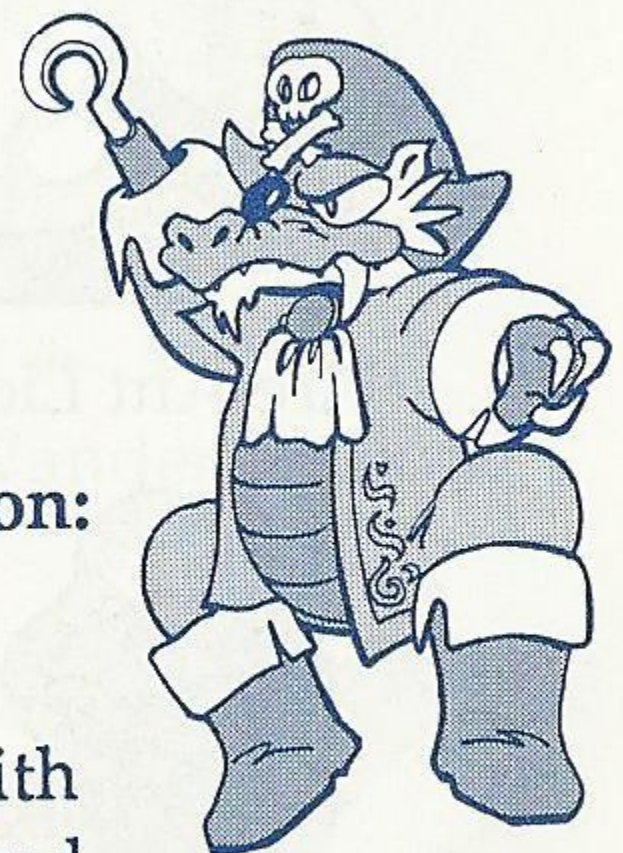
Dragon Zombie:
Lives on the top floor of the jungle tower.



Daimyo Dragon:
Lives deep inside a cave in a Japanese castle.



Mummy Dragon:
A dragon that became a mummy in a pyramid. It has the magical power of turning its enemy into a mouse.



Captain Dragon:
A pirate once changed his appearance with black magic, and now lives as a dragon in a sunken ship deep beneath the ocean waves.

Vampire Dragon:

You must defeat it to obtain the Salamander Cross and change back to human form.



Helpful Hints

- If you see something interesting that you can't get to, think what shape would let you get there.
- Earn a lot of money to buy needed equipment by defeating creatures and finding treasure chests.
- Use the right kind of armor. For example, some armor does not get damaged in red lava, some can get you a lot of gold when you knock down an enemy, some give you a heart very easily and some let you breathe in water. Experiment! The name of the armor often gives you a clue to its use.
- Different weapons have special uses. Like armor, the name often gives a clue to the weapon's use.
- Find hidden doors by destroying blocks.
- Some rooms let you change appearances at will. This will make the game much easier.
- Watch the Demo Screen carefully. It has many hidden hints.

Handling The Mega Cartridge™

- The Mega Cartridge is intended exclusively for the Sega System™
- Do not bend, crush or submerge in liquids.
- Do not leave in direct sunlight or near a radiator or other source of heat.

90-Day Limited Warranty Sega® Card/Cartridge

To validate the following 90-day limited warranty, your sales slip or proof of purchase should be retained at time of purchase and presented at time of warranty claim.

90-Day Limited Warranty

Sega of America, Inc. warrants to the original consumer purchaser that this Sega Card™ /Cartridge™ shall be free from defects in material and workmanship for a period of 90 days from the date of purchase. If defect covered by this warranty occurs during this 90-day warranty period, Sega will repair or replace the defective card/cartridge, at its option, free of charge.

This warranty does not apply if the defects have been caused by negligence, accident, unreasonable use, modification, tampering or any other causes not related to defective materials or workmanship.

To receive fast, reliable service, call the Sega Customer Service Department at the following numbers:

Outside California: 800-USA-SEGA

Inside California: 415-742-9300

Our Customer Service Department is in operation from 9:00 AM to 5:00 PM (Pacific Time), Monday through Friday. *Do not return your Sega Card/Cartridge to your retail seller.*

Sega's service center is located at the following address:

Sega of America, Inc.

Warranty Repair

573 Forbes Blvd.

South San Francisco, CA 94080

Limitations On Warranty

Any applicable implied warranties, including warranties of merchantability and fitness for a particular purpose, are hereby limited to ninety days from the date of purchase and are subject to the conditions set forth herein. In no event shall Sega of America, Inc. be liable for consequential or incidental damages resulting from the breach of any express or implied warranties.

The provisions of this warranty are valid in the United States only. Some states do not allow limitations on how long an implied warranty lasts or exclusion of consequential or incidental damages, so the above limitations of exclusion may not apply to you. This warranty provides you with specific legal rights. You may have other rights which vary from state to state.

Sega Customer Service, 573 Forbes Blvd., South San Francisco, CA 94080

(800) U.S.A.-S.E.G.A.

Distributed by Tonka Corp.

7026

SEGA[®]

F R O M T O N K A

WONDER BOY, CONTROL PAD and CONTROL STICK are trademarks of Sega of America, Inc. SEGA is a trademark of Sega Enterprises, Ltd., a CSK Group Company. ©1989 Sega. All Rights Reserved.

Printed in Japan

©1989 Tonka Corp. All Rights Reserved.