

# Lord of the Sword™



SEGA®

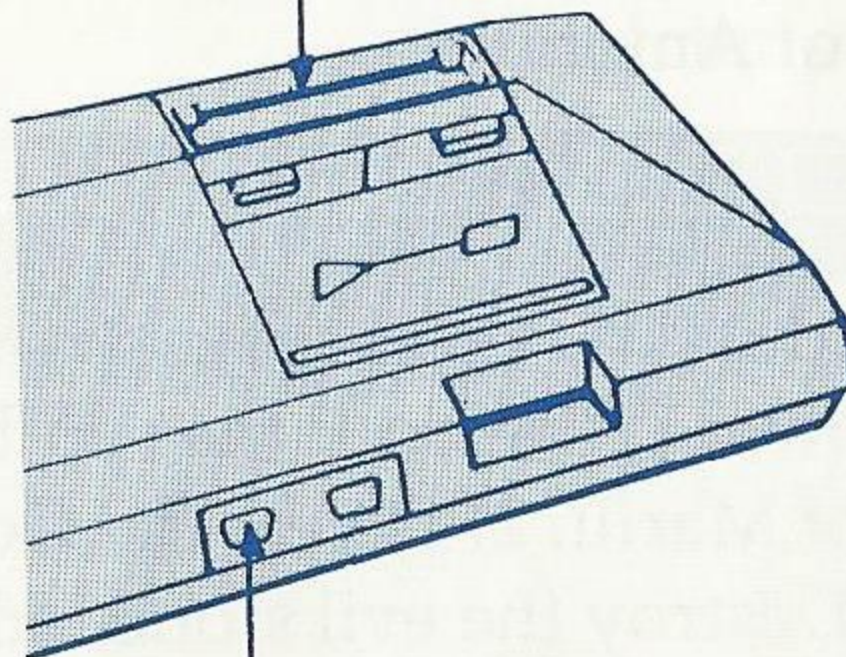
Evil has engulfed the empire. Foul creatures are ready to take the crown. One mighty warrior can stop them: Landau the Brave. Help him defeat the cruel forces of evil and save the kingdom from certain doom.

# Loading Instructions: Starting Up

- 1) Make sure the power switch is OFF.
- 2) Insert the game cartridge in the Power Base (shown below) as described in your SEGA SYSTEM manual.
- 3) Turn the power switch ON. If nothing appears on the screen, turn the power switch OFF, remove the cartridge, and try insertion again.
- 4) At the title screen, press Button 1 to start the game.

**IMPORTANT:** Always make sure that the Power Base is turned OFF when inserting or removing your Sega Cartridge.<sup>TM</sup>

Insert Two-Mega Cartridge



Insert Control Pad1

# The Quest for the Crown

These are dark times for the kingdom of Baljinya. An evil band of foul creatures has murdered the king and his family. Soon, they will resurrect the corrupt and inhuman spirit of their long-dead leader, the Demon Lord Ra Goan. If they succeed, with the throne of Baljinya empty, Ra Goan will take the crown and the land will suffer in misery forever.

The Elders of Baljinya know that only a strong and brave man can hold the country against Ra Goan and his evil followers. Therefore, they have decreed that a man who can pass three daring tests will be King. The tests are:

1. He must find the Tree of Marill, symbol of the royal family.
2. He must subdue the Goblin of Balala Valley.
3. He must destroy the Statue of Evil.

You are Landau, the mighty warrior from the north. Armed with your trusty sword and bow, you go forth to stamp out the evil scourge that plagues your homeland. The road is long, and the dangers many, but if you succeed, fame and the royal crown of Baljinya will be yours! Go now, and seek the wise Wizard of Amon!

## The Object

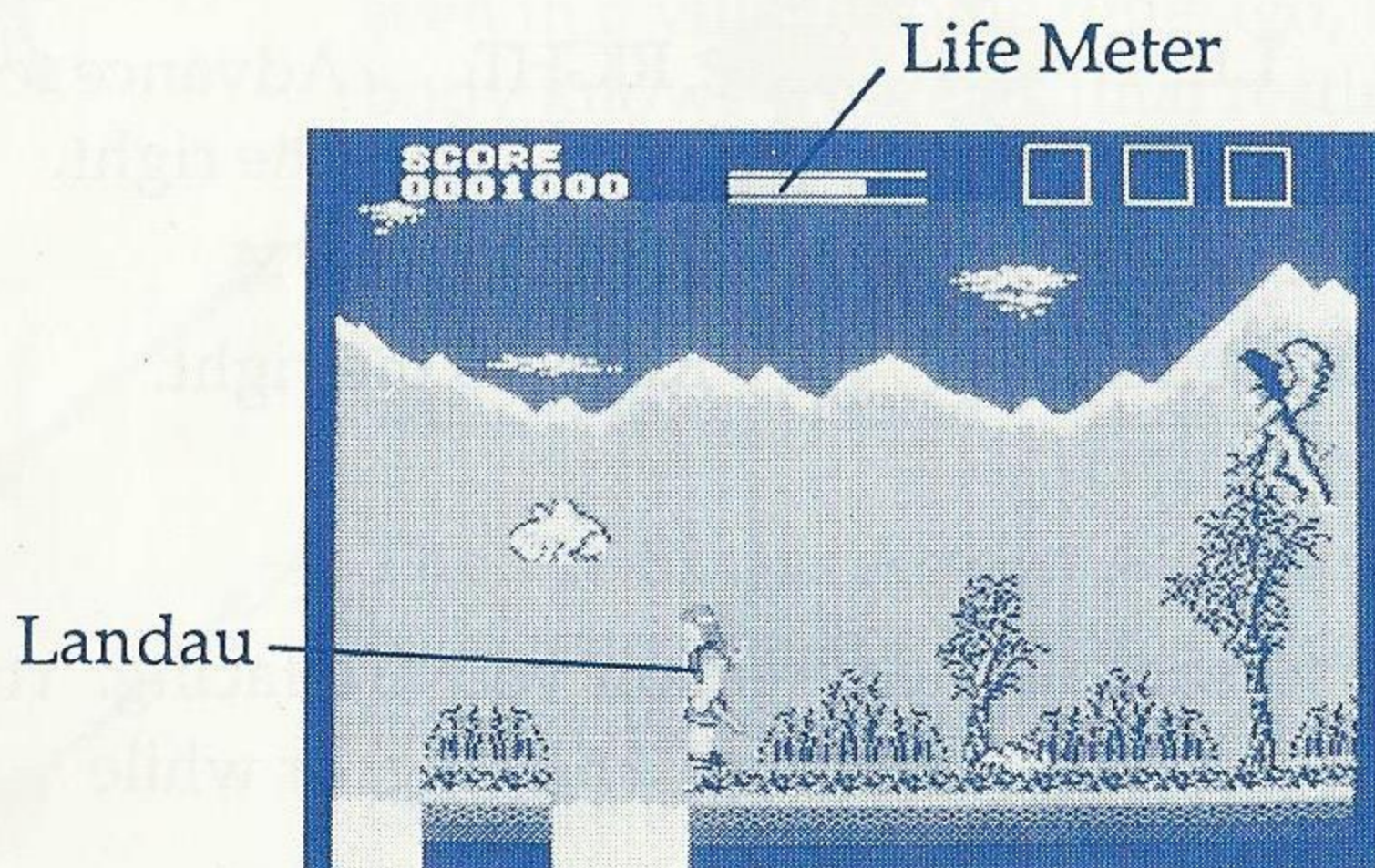
The Council of Elders has set three tasks for a warrior deserving of the crown: 1) Seek out the symbol of the royal family, the Tree of Marill. 2) Defeat the Goblin inhabiting the Balala Valley. 3) Destroy the evil stone idol.

You start out from the tiny village of Harfoot. In each town and village, you'll be able to hear valuable information and collect useful tools to aid you in your quest. As you roam the countryside, you'll encounter many hardships and difficulties. Defeat the last enemy and return to the castle. If you're crafty and accomplish the three tasks, you'll be the next king. Fail, and you doom your country to eternal peril.

## Oops. Try Again.

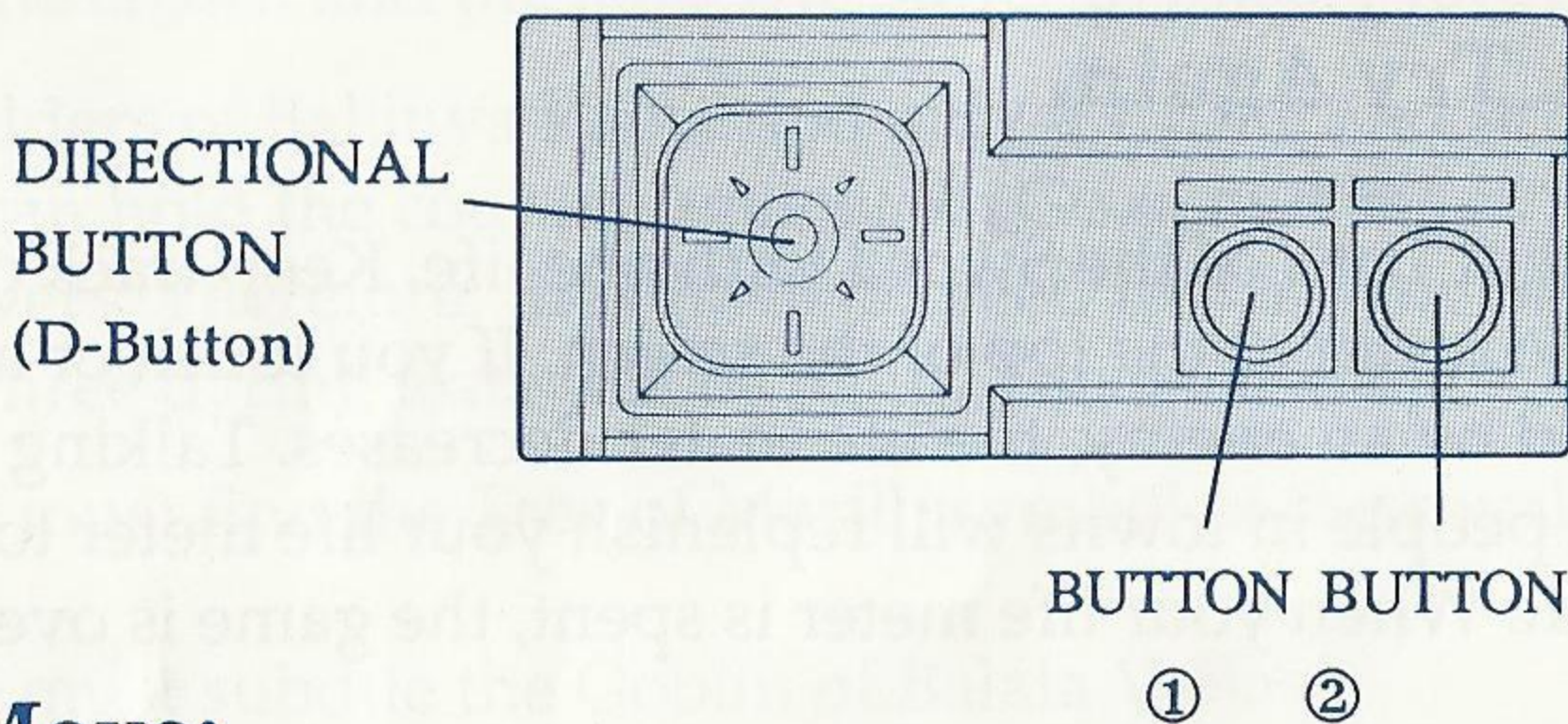
You begin Lord of the Sword with one life. Keep track of your life meter at the top of the screen. If you touch or are attacked by an enemy, the life meter decreases. Talking to certain people in towns will replenish your life meter to full strength. When your life meter is spent, the game is over.

When you return to the title screen, you have the option of starting a new game, or continuing from the beginning of the last scene you were in. You can use the CONTINUE feature up to ten times.



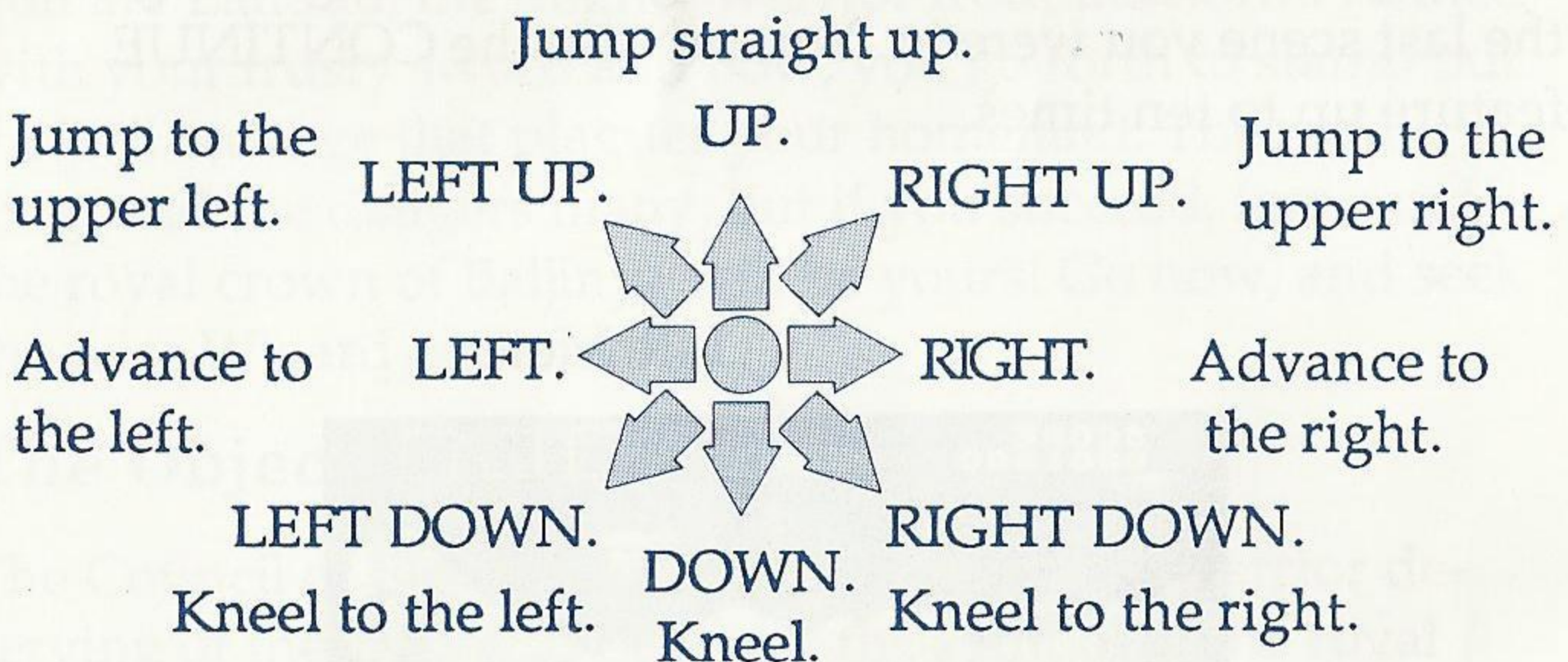
# Taking Control

Lord of the Sword is a one-player game. Start by pushing Button 1 or Button 2. You can move through the intro screens after you have read them by again pushing either button. The game begins with Landau in the village of Harfoot.



## To Move:

D-Button



## The Sword

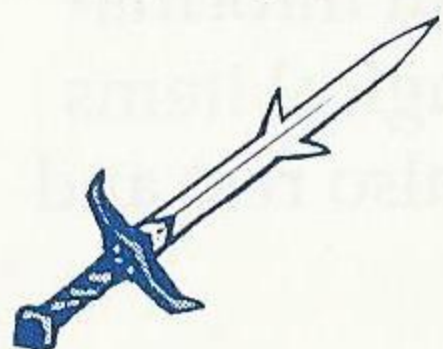
Press Button 2 to slice in the direction you are facing. You may use your sword when standing, kneeling, or while leaping.

## The Bow

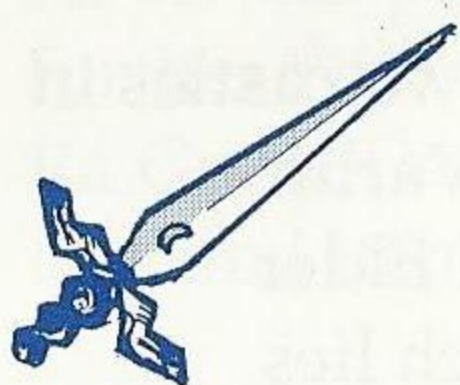
To use your bow and arrow, face the direction you wish to fire and press Button 1. The arrow will be released when you release Button 1. You have an unlimited amount of arrows. You may shoot when kneeling or standing, but cannot shoot while jumping.

## Tools and Treasure

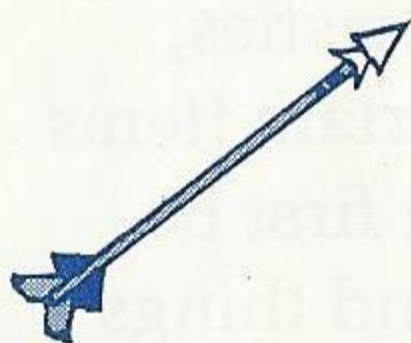
Along the way, Landau will find many important items to help defeat his enemies, including magical swords and arrows. Some of the most important items include:



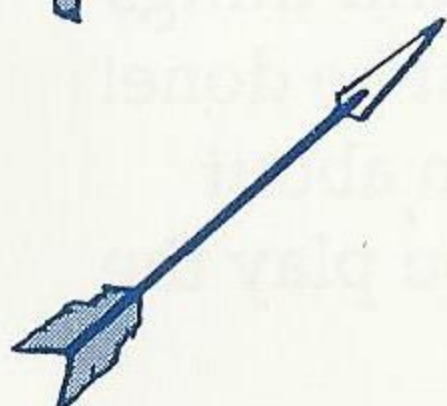
**The Tezamu Sword:** Only a person who is pure of heart can use this magical narrow-bladed rapier. It's rumored that a brawny young man once wielded this sword, but he hasn't been seen since he went off to do battle with the evil creatures of Baljinya.



**The Luna Sword:** Forged from the sharp, silvery rays of the moon, this magical sword is the most powerful in the land. It was once seen in a village some time ago, but today nobody knows where its final resting place is.

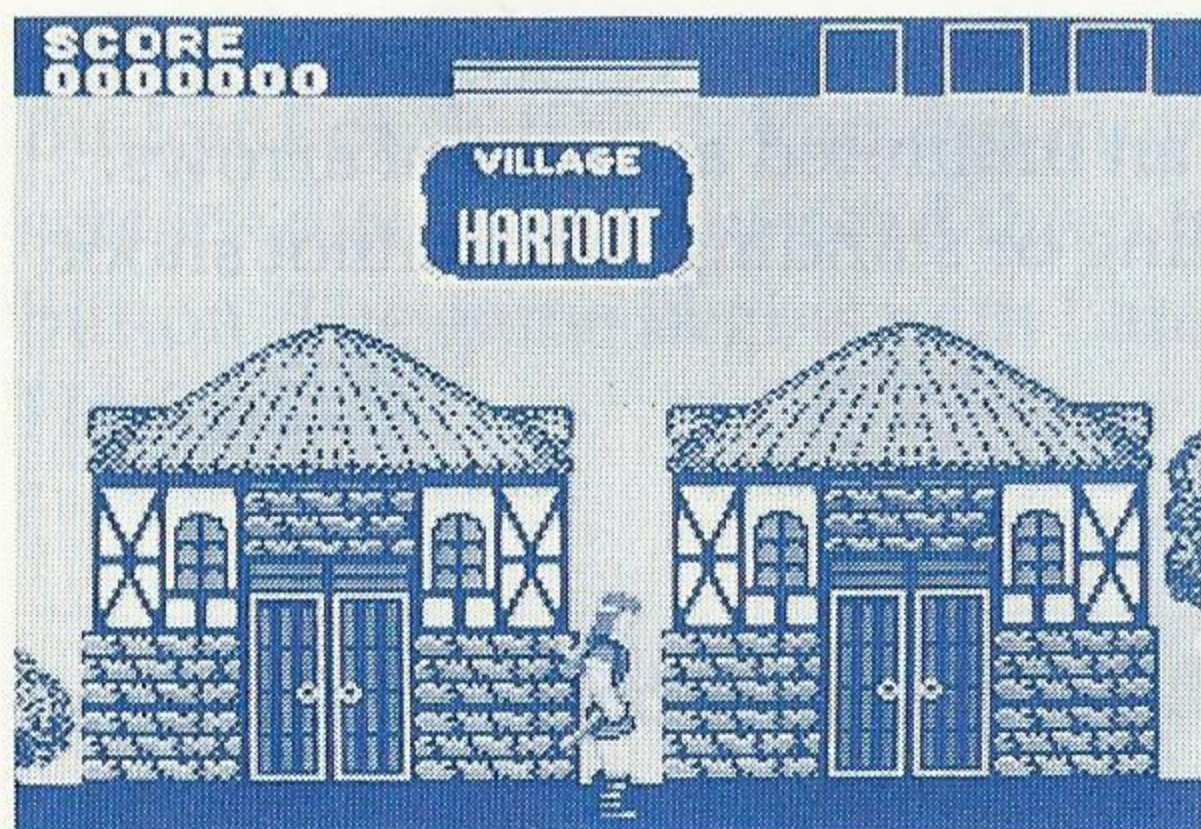


**The Bow of Bravery:** By acquiring this magical bow, the shooting strength of a person will double.



**The Foe Slayer Arrow:** Although it may only be legend, the Foe Slayer is said to possess unimaginable power against evil. But where can it be found?

## Towns and Villages



When in a town or village, there are some houses you may enter by moving the Directional Button UP when in front of dwellings that have open doors.

Once inside, you may be able to hear bits of useful information from helpful townsfolk, or even be given magical items from powerful sages. In many houses, you may also rest and have your life meter restored.

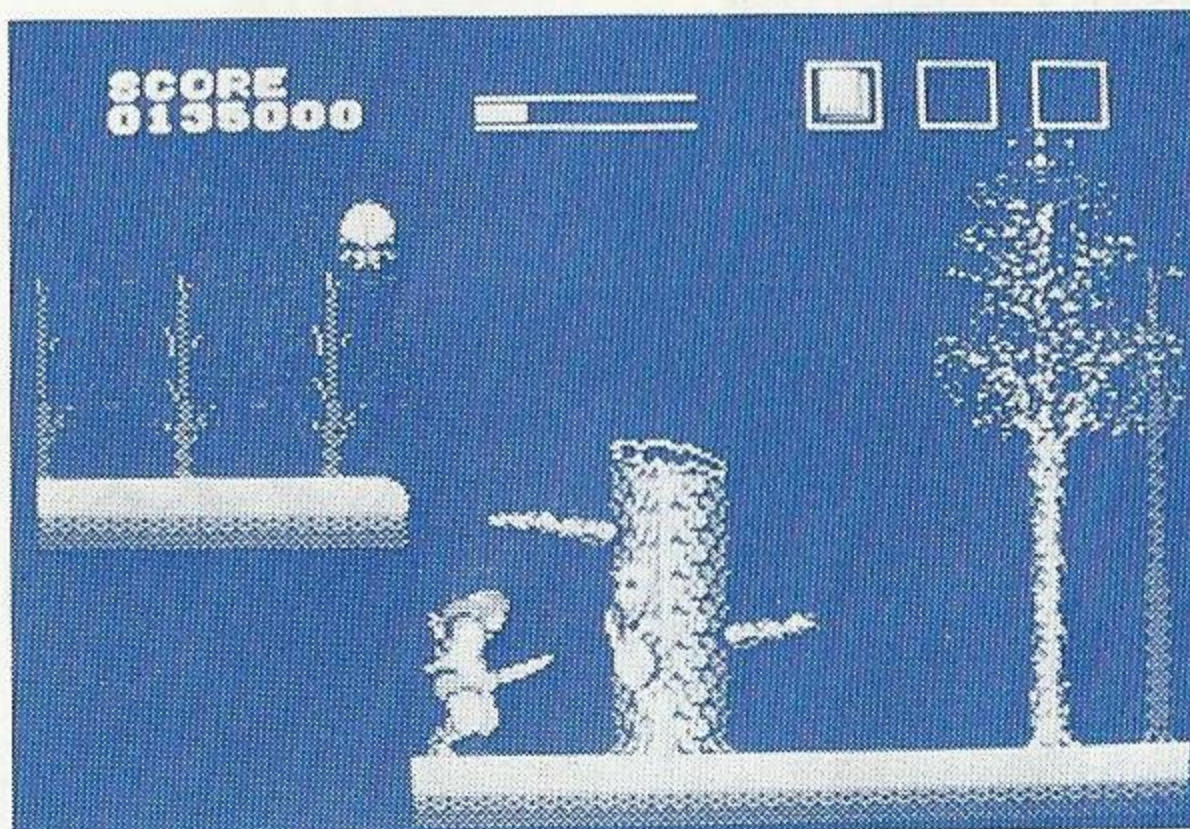
## The Castles



There are two castles in the game: Varlin Castle, and Elder Castle which lies across the ocean. To enter these castles, there are certain items which must first be found . . . and things which must be done! You'll learn about these as you play the game.

# The Kingdom of Baljinya

In between towns and villages lie flatlands, dark forests, steep and dangerous mountains, dank smelling swamps . . . land festering with evil creatures and thieves. These wild places are filled with creatures bent on your destruction!



At certain points in the game, Landau can proceed no further without first doing battle with servants of the evil Ra Goan. Defeat them, and you'll receive valuable information and items to defeat the foul Demon Lord.



# The Map

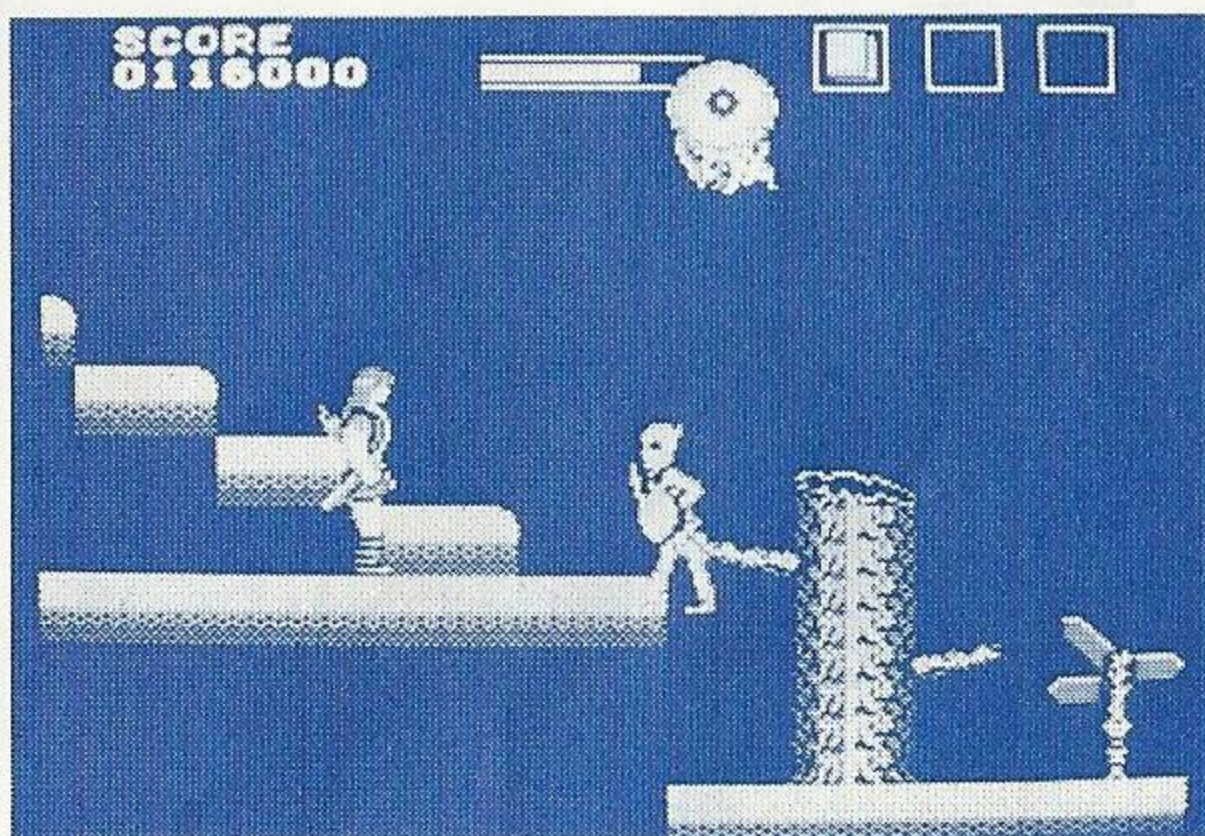
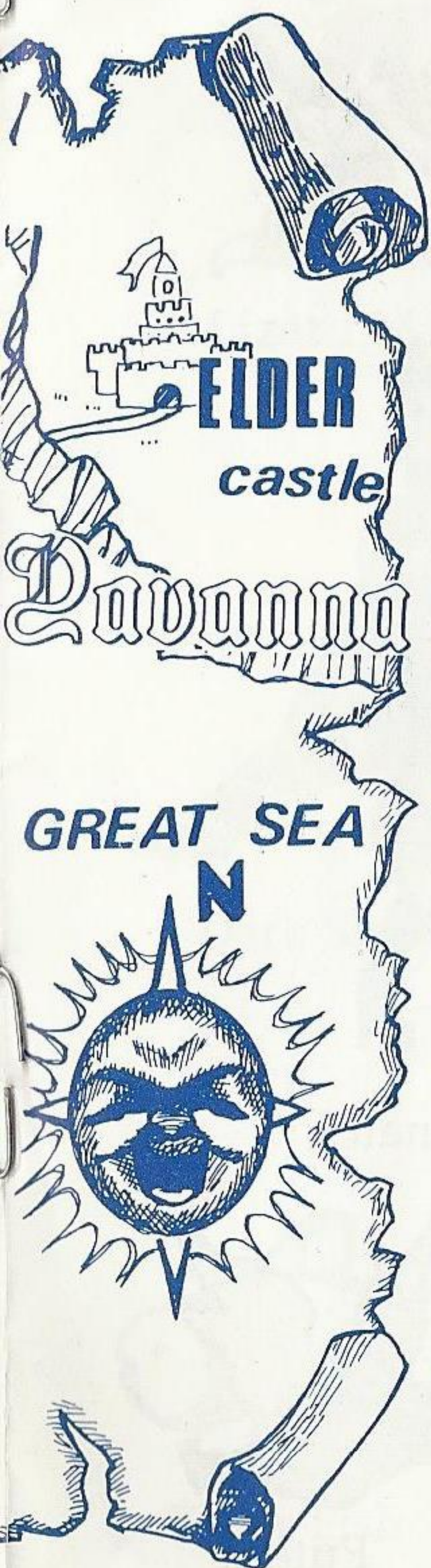
When in a town or village, press the Pause Button on the Sega Power Base, and a map of Baljinya will appear on screen. Press Pause again to return to the game.

Here's a map of the world of Lord of the Sword with all the towns and areas identified:



## Crossroads

On the outskirts of each screen are path signs, some pointing in several directions. These signs show you the different directions you can take. By climbing the stairs or proceeding straight ahead, you choose which direction in the kingdom to proceed. Experience and the map of Baljinya will help you learn where each road goes.



# Know Thine Enemy

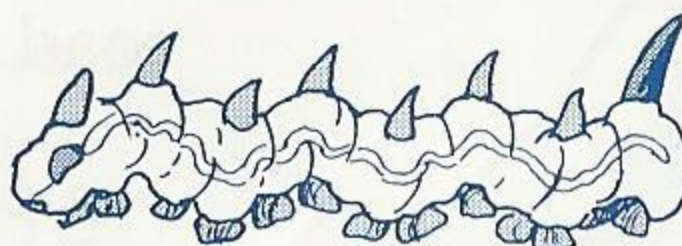
Below are only a few of the many evil creatures awaiting you in the land of Baljinya.



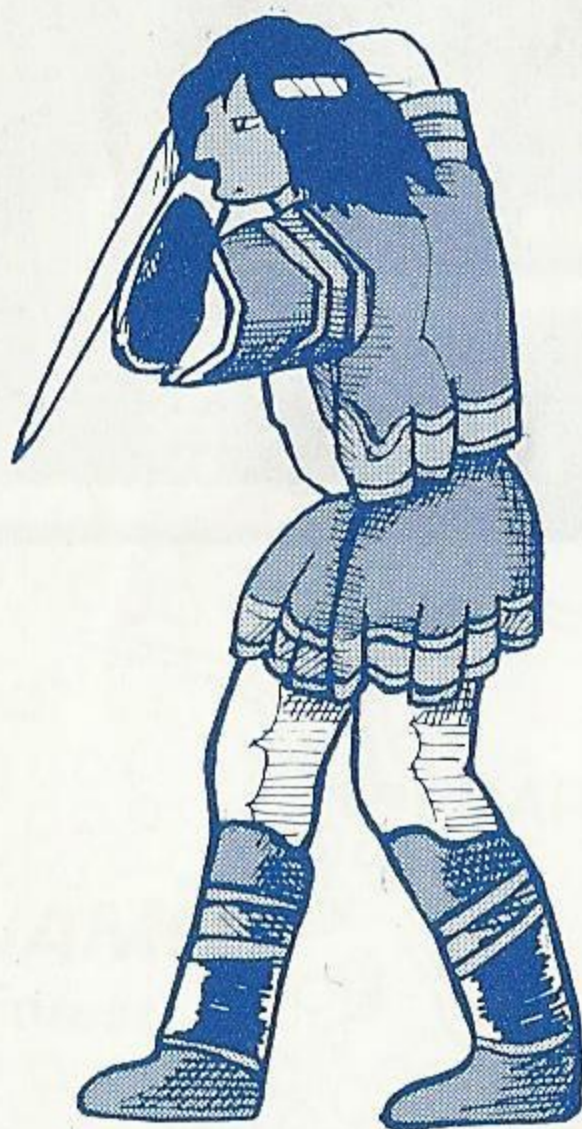
Giant Bat



Snake



Vermin



Book Thief



Banda Snatch



Giant Spider



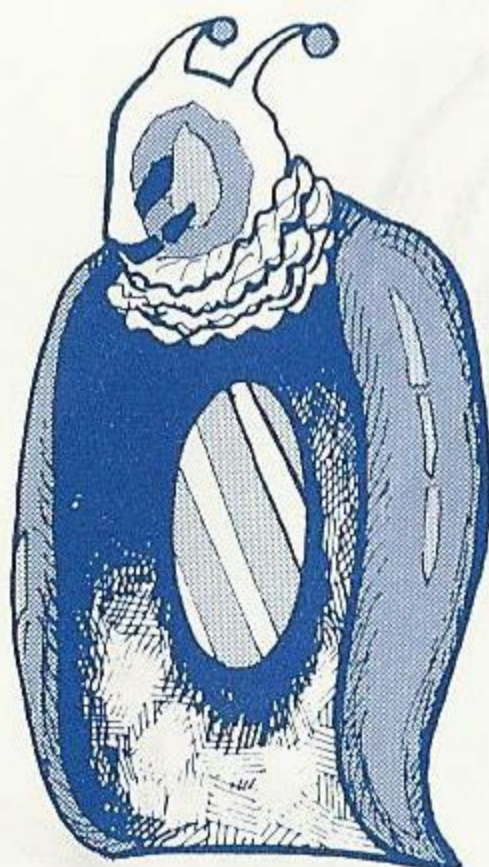
Giant Scorpion



Putera



Lizard Man



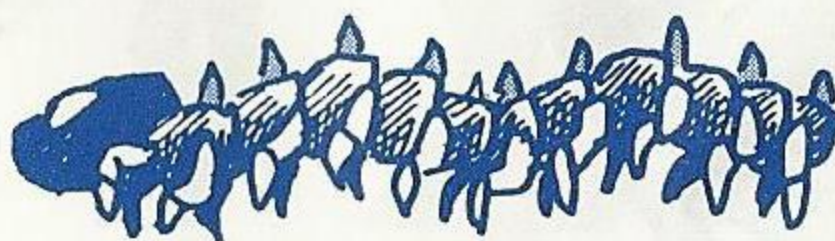
Necromancer



Zombie



Dark Shunaida



Giant Centipede



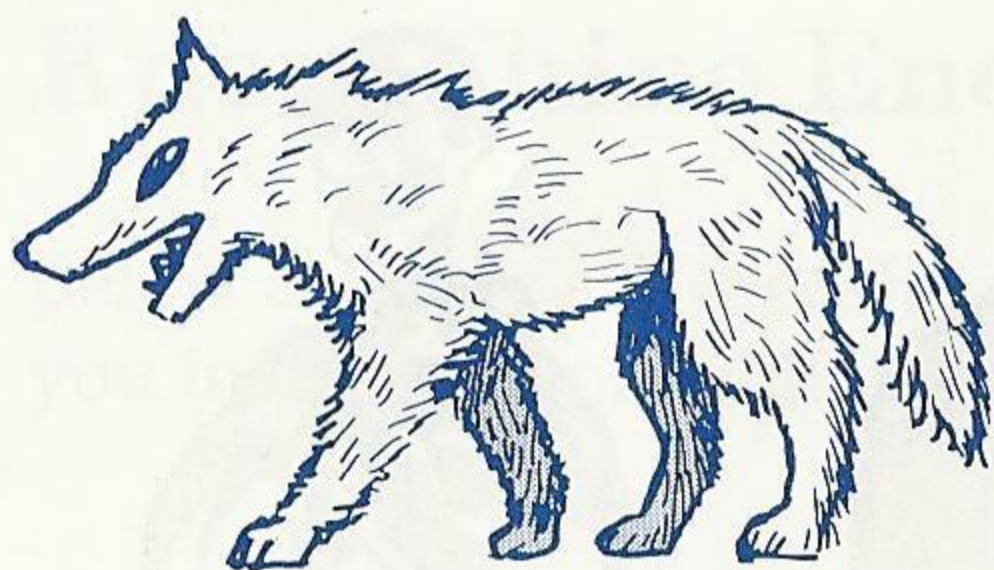
Killer Fish



Straw Fly



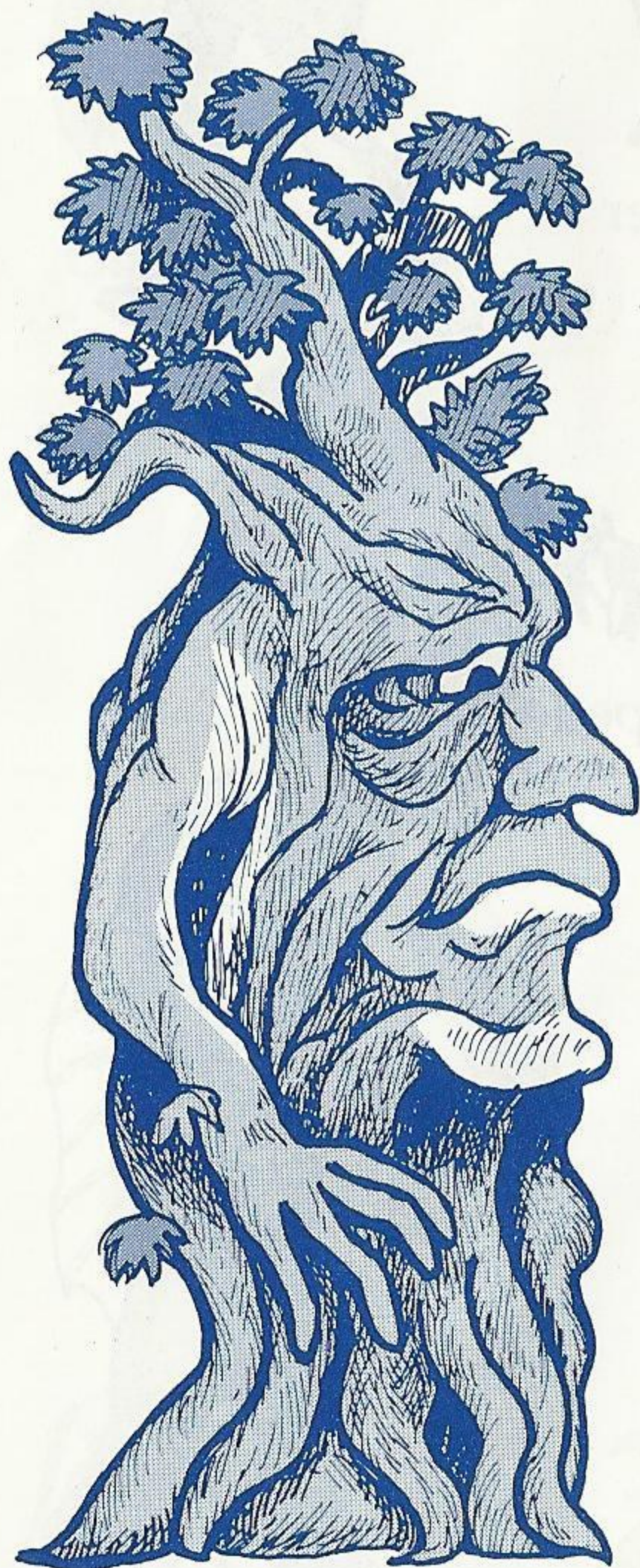
Dagon



White Wolf



Slime Skeleton



Tree Spirit



Pirate

## Castle Bodyguards



Stone Hammer



Paradin



Ripper



Baruga



Dark Suma

## Helpful Hints

- Before you do anything else in the game, seek out the Tree People for advice.
- Use the map in the town and village scenes along with the map in this manual to keep track of where you are in Baljinya.
- Use your bow and arrow whenever possible. Fighting hand-to-hand with creatures increases the chance of being touched and having life force drained away.
- Avoid battle when it is easier to run away. Remember: The test of courage is not to die . . . but to live long enough to become King!

# Scorebook

Date				
Name				
Score				

Date				
Name				
Score				

Date				
Name				
Score				

Date				
Name				
Score				

## Handling The Mega Cartridge™

- The Mega Cartridge is intended exclusively for the Sega System™.
- Do not bend, crush or submerge in liquids.
- Do not leave in direct sunlight or near a radiator or other source of heat.

# 90-Day Limited Warranty Sega® Card/Cartridge

To validate the following 90-day limited warranty, your sales slip or proof of purchase should be retained at time of purchase and presented at time of warranty claim.

## 90-Day Limited Warranty

Sega of America, Inc. warrants to the original consumer purchaser that this Sega Card™ / Cartridge™ shall be free from defects in material and workmanship for a period of 90 days from the date of purchase. If defect covered by this warranty occurs during this 90-day warranty period, Sega will repair or replace the defective card/cartridge, at its option, free of charge.

This warranty does not apply if the defects have been caused by negligence, accident, unreasonable use, modification, tampering or any other causes not related to defective materials or workmanship.

To receive fast, reliable service, call the Sega Customer Service Department at the following numbers:

Outside California: 800-USA-SEGA

Inside California: 415-742-9300

Our Customer Service Department is in operation from 9:00 AM to 5:00 PM (Pacific Time), Monday through Friday. *Do not return your Sega Card/Cartridge to your retail seller.*

Sega's service center is located at the following address:

Sega of America, Inc.

Warranty Repair

573 Forbes Blvd.

South San Francisco, CA 94080

## Limitations On Warranty

Any applicable implied warranties, including warranties of merchantability and fitness for a particular purpose, are hereby limited to ninety days from the date of purchase and are subject to the conditions set forth herein. In no event shall Sega of America, Inc. be liable for consequential or incidental damages resulting from the breach of any express or implied warranties.

The provisions of this warranty are valid in the United States only. Some states do not allow limitations on how long an implied warranty lasts or exclusion of consequential or incidental damages, so the above limitations of exclusion may not apply to you. This warranty provides you with specific legal rights. You may have other rights which vary from state to state.

Sega Customer Service, 573 Forbes Blvd., South San Francisco, CA 94080

(800) U.S.A.-S.E.G.A.

Distributed by Tonka Corp.  
Minnetonka, MN 55343

LORD OF THE SWORD, CONTROL PAD,

CONTROL STICK and A TWO-MEGA CARTRIDGE, are trademarks of Sega of America, Inc.

SEGA is a trademark of Sega Enterprises, Ltd., a CSK Group Company.

PRINTED IN JAPAN

7016

**SEGA**<sup>®</sup>  
FROM TONKA

© 1988 Tonka Corp. All Rights Reserved.