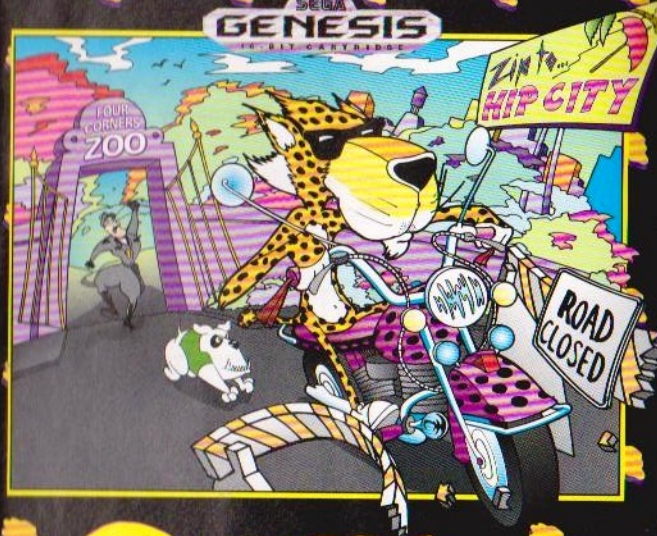


KANEKO®

SEGA
GENESIS
SECRET CARTRIDGE



CHESTER CHEETAH®

TOO COOL TO FOOL

Instruction Manual



This game is Licensed by Sega Enterprises LTD.
for play on the Sega™ Genesis™ System.
Sega and Genesis are trademarks of Sega
Enterprises LTD.

KANEKO USA, LTD.
1370 Busch Parkway, Buffalo Grove, IL 60089

CHESTER CHEETAH® and the character are registered
trademarks of Recot, Inc. under license by Kaneko USA, Ltd.
©Recot, Inc. 1992 Frito Lay, Inc. Dallas, TX 75235-5224

PRINTED IN JAPAN

Thank you for purchasing Kaneko's "CHESTER CHEETAH®" Too Cool To Fool for Sega Genesis. Please read through this manual before playing the game.

CHESTER CHEETAH® and character are registered trademarks of Recot, Inc. under license by Kaneko USA, Ltd.

©Recot, Inc. 1992 Frito Lay, Inc. Dallas, TX 75235-5224

©1992 KANEKO CO., LTD.

CONTENTS

| | |
|---------------------------------|----|
| The Story..... | 3 |
| How To Play..... | 4 |
| Options..... | 6 |
| Introduction To Items..... | 7 |
| Introduction Of Stages..... | 10 |
| Introduction Of Characters..... | 12 |

Handling Your Cartridge

- The Sega Genesis Cartridge is intended for use exclusively for the Sega Genesis System.
- Do not bend it, crush it, or submerge it in liquids.
- Do not leave it in direct sunlight or near a radiator or other source of heat.
- Be sure to take an occasional recess during extended play, to rest yourself and the Sega Cartridge.

Warning to owners of projection TV'S: Still pictures or images may cause permanent picture-tube damage or mark the phosphor of the CRT.

Avoid repeated or extended use of video games on large-screen projection televisions.



The official seal is your assurance that this product meets the highest quality standards of SEGA. Buy games and accessories with this seal to be sure that they are compatible with the SEGA GENESIS SYSTEM.

STORY

Yo! Welcome to the CHESTER CHEETAH®

CHESTER CHEETAH®, here. I'm a cool dude in a loose mood...a righteous Kitty, from the heart of Hip City. But right now I'm being held against my will In Four Corners Zoo... like squaresville! I just don't dig this lane zoo gig.

GAME OBJECTIVE

What you want to do is help me make it through every stages in Four Corners Zoo.

When all stages are mastered without meeting disaster, I can ditch this zoo and ride away to Hip City, UCA.

BASIC INSTRUCTIONS

- Once the adventure starts, keep your eyes peeled for motorcycle parts.
Dig this, CHESTER CHEETAH® ordered this really boss "chopped hog" from a motor cycle catalog, but Mean Eugene hid pieces of the cat's radicool machine all round these zoo grounds.
- Help CHESTER CHEETAH'S® collect the missing parts today. There's one piece hidden in every stage of play. When you retrieve every last nut and screw, CHESTER CHEETAH® can bolt the Four Corners Zoo.
- While finding parts to CHESTER CHEETAH® motorcycle, collect points by advancing, walking, jumping, geeking and eating "power-ups" through numerous levels of play. We can then advance to each of the stages of game play.

Good luck and have a way-cool day!

HOW TO PLAY

START : As is **CHESTER CHEETAH®** way, this is a one person play. Choose **START** or **OPTIONS**

OPTIONS : **OPTIONS** may be chosen from the title screen.



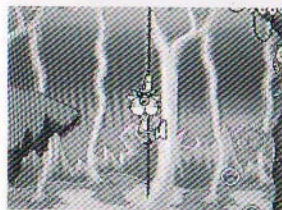
PROCEED TO NEXT STAGE

By winning over the enemies, collecting badges and overcoming various traps, stages may be completed (6 in all). Each time a trap is avoided a part of the motorcycle can be found. A stage cannot be cleared without finding the motorcycle part.

Basic functions of controller

| | |
|--------------|---|
| A BUTTON | Not Used |
| C BUTTON | CHESTER CHEETAH® Jumps |
| START BUTTON | Start/Pause |
| B BUTTON | By pressing and moving CHESTER CHEETAH® Runs |
| CROSS BUTTON | (Up) Climbs: rope and cave (Left) Move to left (Right) Move to right (Down) Duck |

Button functions may be altered by utilizing **OPTIONS** screen.



To Climb

When underneath a rope and in a cave, climb the vine the **CONTROL PAD UP**.



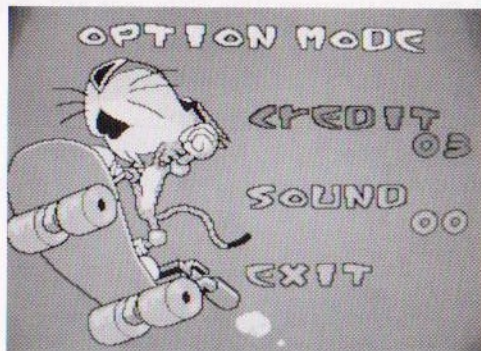
To Run

By pressing the L and R button and moving to the side, **CHESTER CHEETAH®** runs. (Sneakers are needed to run)

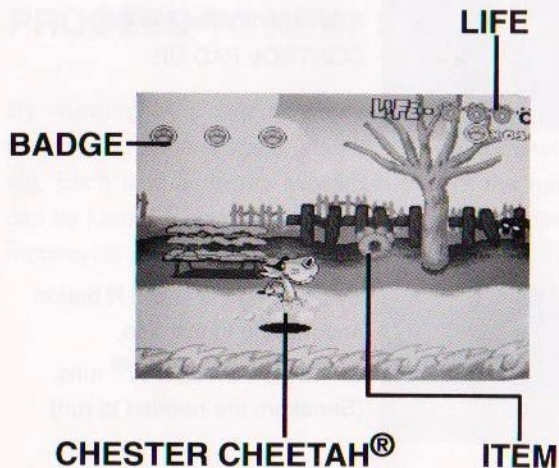
HOW TO PLAY

Select OPTIONS:

| | |
|-------------|---------------------------------------|
| Credit | Lift Up |
| Sound Test | Background Music and Sound Effects |
| Button Tune | Button Functions |



The fun begins!

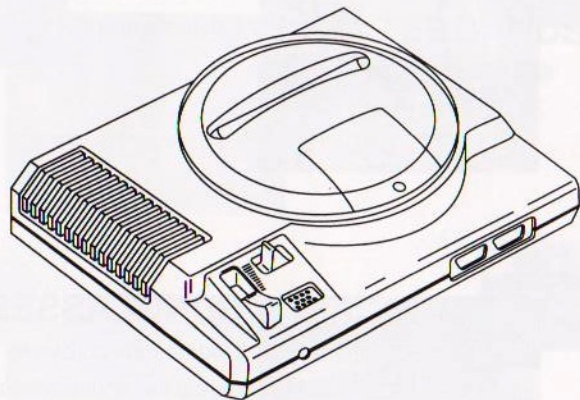


1. Set up your Genesis System as described in its instruction manual.
Plug in Control Pad 1 and/or control pad 2.
(Deadly Moves is a one player or two player game.)
2. Make sure the power switch is OFF. Then insert the Deadly Moves cartridge into the console and press it down firmly.
3. Turn the power switch ON. In a few moments, the Sega screen appears.
4. Press Start when the Title screen appears.

Important: If the Sega screen doesn't appear, turn the power switch OFF.

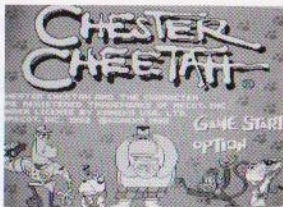
Make sure your system is set up correctly and the cartridge is properly inserted, with its label facing toward you.

Then turn the power switch ON again. Always make sure the power switch is turned OFF before inserting or removing the Sega cartridge.



INTRODUCTION OF ITEMS

CHESTER CHEETAH® can use various items. As play proceeds, various items appear.



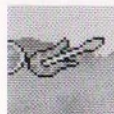
CHEETAH PAW

Restores power



SUNGLASSES

Darkens the screen to reveal invisible power-ups



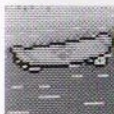
GUITAR

CHESTER CHEETAH® dances and is safe from all enemies



SNEAKERS

CHESTER CHEETAH® runs



SKATEBOARDS

CHESTER CHEETAH® proceed to the BONUS STAGES



BADGES

Obtain 100 for an additional credit

INTRODUCTION OF STAGES

| | |
|--------|-----------------------|
| STAGE1 | Four Corners Zoo Park |
| STAGE2 | Monkey Pits |
| STAGE3 | Gator Alley |
| STAGE4 | Hidden Caves |
| STAGE5 | Bird Houses |
| STAGE6 | BONUS ROUND |



STAGE 1 FOUR CORNERS ZOO PARK

Okay friend, have a heart and help me split this park.

HINT: The sewer will fade when you pick up my shades so the paws will appear and your goal will be clear!



STAGE 2 MONKEY PITS

Like congrats! After that awesome showing, you best keep right on going.

Let's give Mean Eugene fits and ditch him in the Monkey

Pits. Swing from vine to vine and grab the sunglasses this time!

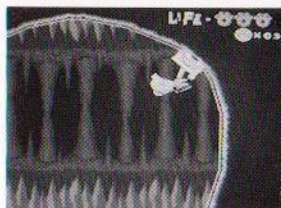
HINT: If Mean Eugene makes a monkey out of you, we'll never blow this funky zoo.



STAGE 3 GATOR ALLEY

Good gain by swipin' the motorcycle frame! You're totally shrewd, dude. Now that you're on a roll, get a load of the Gator Alley. It's so cool

we've got to get a grip on some hip handlebars.



STAGE 4 HIDDEN CAVES

Later, gator. It's time to rock! If you're hip and brave enough, check out these Hidden Caves and stuff. And, like, snag the engine for my bike.

STAGE 5 BIRD HOUSES

Whoa! You're quick, courageous and totally outrageous! The only challenge left for me is to hit the Bird Houses and hawk the ignition key. C'mon be my guest and see if we can nail this quest!

HINT: Hang with the high-flyin' Bird House gang.

CHARACTERS

INTRODUCTION OF CHARACTERS

Meet Chester Cheetah's Friends:

THE HIP-O

The Hip-O is a heavy dude with a radicoool attitude. My big-hearted bud is no stick in the mud. There's no greater ally in Gator Alley.



FUNKY MONKEY

The Funky Monkey and I share a hip kinship. Like ,dig. We're both swingin' cats, and I sincerely mean that. This kooky ape will help you escape so you'll not end up as stink bait



Most CHESTER CHEETAH® Enemies

MEAN EUGENE

Mean Eugene the Zookeepin' Fiend is one square hairball. A gung-ho security bozo who's tryin' to keep you-know-who trapped in the Four Corners Zoo.



GRUNT

Grunt is Mean Eugene's none-too-slick , thick-as-a-brick sidekick.



WARRANTY

KANEKO USA, LTD, warrants to the original Consumer that the KANEKO Genesis Cartridge is free from defects in material and workmanship for a period of 90 days from the date of purchase. If a defect covered by this Warranty occurs during this 90-day Warranty period, KANEKO will repair or replace the defective Game Pak or component part, at its option, free of charge.

This Warranty does not apply if the defects have been caused by negligence, accident, unreasonable use, modification, tampering, or any other causes not related to defective materials or workmanship.

DO NOT RETURN YOUR KANEKO Genesis Cartridge TO YOUR RETAILER. Return the product with a dated proof of purchase to:

KANEKO USA, LTD.
1370 Busch Parkway
Buffalo Grove, IL 60089
(708)808-1370

LIMITATIONS ON WARRANTY

Any applicable implied warranties, including warranties of merchant ability and fitness for a particular purpose, are hereby limited to ninety days from the date of purchase and subject to the conditions set forth herein. In no event shall KANEKO USA, LTD. be liable for consequential or incidental damages resulting from the breach of any expressed or implied warranties. The provisions of the warranty are valid in the United States only. Some states do not allow limitations on how long an implied warranty lasts, or exclusion of consequential or incidental damages, so the above limitation or exclusion may not apply to you. This warranty provides you with specific, legal rights. You may have other rights which vary from state to state.



50¢

MANUFACTURER'S COUPON

COUPON EXPIRES 12/31/93

50¢

SAVE 50¢
GET YOUR CLAWS ON
Cheetos® PAWS

CHEESE FLAVORED SNACKS

7.0 oz. Size or Larger

TO OUR CUSTOMERS: Coupon good only on indicated product. LIMIT ON COUPON USE: ONE PER CUSTOMER. NO CASH REFUND. TRANSFERABLE. Any other use constitutes fraud. Customer pays sales tax. TO OUR DEALER: Frito-Lay will reimburse the face value of this coupon plus 8¢ handling, provided all the terms have been complied with. Submission for reimbursement represents compliance. Offer good only in U.S.A. or Puerto Rico. Submissions honored only from the U.S.A. or Puerto Rico. Submissions must be accompanied by a check or money order payable to Frito-Lay, Inc. Mail to: Frito-Lay, Inc., Dept. 122, Mail code 100, P.O. Box 970568, El Paso, TX 79997-0058. Void if copied, and where prohibited, licensed or regulated. CHEETOS is a registered trademark used by Frito-Lay, Inc. © FRCOT, Inc., 1992.

203064



5 28400 41050

7

