

TM

# ALIEN SOLDIER



**Alien Soldier**

User's Manual

**MEGA DRIVE**

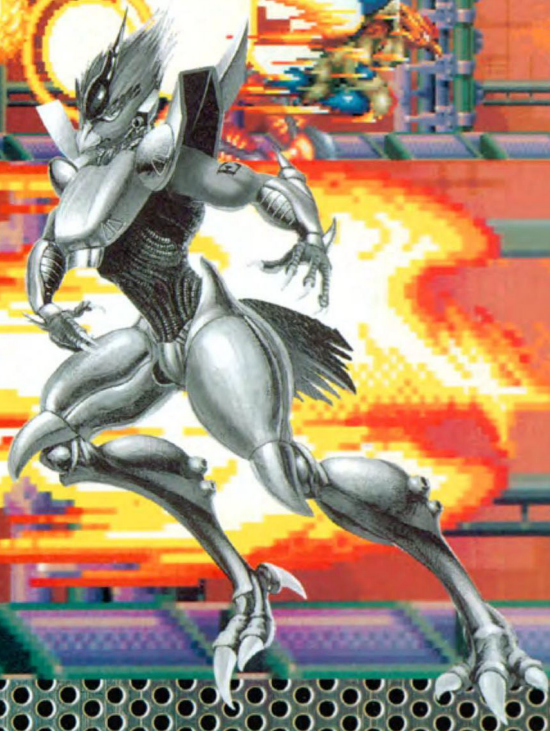
**SEGA™**

**Thank you very much for purchasing  
the "Alien Soldier" software for the  
Mega Drive.  
Please read this User's Manual before  
starting the game to have a better  
playing experience.**

## **CONTENTS**

<b>Prologue - Story</b>	<b>4</b>
<b>How to operate - Operation of Epsilon 2</b>	<b>6</b>
<b>How to play the game - Battle Prelude</b>	<b>12</b>
<b>Weapon Handling</b>	<b>20</b>
<b>Act Introduction - Seeking Revenge &amp; Your Identity</b>	<b>24</b>
<b>Characters - Heretics Born into This World</b>	<b>28</b>
<b>Enemy Characters - List of Scarlet Members</b>	<b>32</b>
<b>Game Tips - Alien Soldier's Code</b>	<b>34</b>
<b>Appendix - Alien Soldier, Confidential data</b>	<b>36</b>
<b>Precautions For Use</b>	<b>38</b>

# ALIEN SOLDIER™



TM



# ALIEN SOLDIER

## Prologue

### > Story <

The Year is 2015. The planet Sierra is gripped by fear and is in the midst of a deep crisis.

The evil terrorist group, Scarlet are still a commanding force. They have the power to prevent humans travelling to and from the outside universe.

Scarlet's members consist of artificial beings created using super genetic engineering by the Sierrans. Scarlet is an underground organization that has been secretly formed with the express intention of destroying the human race.

In addition to their high level of intelligence and awesome strength, Scarlet's members are equipped with parasitic abilities that allow them to live within human beings, animals and machinery. Equipped with these abilities they conquered the Sierrans and stand on the brink of obtaining supremacy over Sierra.

Epsilon-Eagle, the boss of the Scarlet group, is the intended target of an assassination attempt being planned by Sierrans. A special combat group, capable of using super powers, was secretly dispatched to carry out this mission.

Scarlet unleashed a sudden attack on Epsilon with their super powers. Epsilon, seriously damaged by the attack, was thrown into the time-space continuum which had been activated by Scarlet's use of super powers.

With Epsilon seemingly gone forever, Xi-Tiger took control of Scarlet amidst the resulting confusion. With Xi-Tiger now in charge, the terrorist attacks against Sierrans became more frequent and brutal.



# ALIEN SOLDIER

With this increase in attacks towards Sierrans, Xi-Tiger soon became unpopular amongst Scarlet members. As a result, the demands for the re-instatement of Epsilon as the leader of the Scarlet group became stronger.

Having been isolated from the other Scarlet members, Xi-Tiger Decided to assassinate Epsilon. In an attempt to activate the Time-space continuum, Xi-Tiger ordered an attack on the Sierrans' research laboratory, where children with super powers were behind held hostage having been kidnapped.

Xi-Tiger sensed something was wrong. He could feel the presence of Epsilon in one of the boys. However, he was unsure because he couldn't pinpoint the evil from Epsilon, who had entered the boy's body and was now living as a parasite inside of him. In an attempt to get Epsilon out of the Boy's Body, Xi-Tiger took a young girl hostage and threatened to kill her unless Epsilon released the boy.

The boy flew into a rage and morphed his body into Epsilon

Suddenly, where the boy had been standing, now stood a 'Birdman' with steel wings.

Epsilon's mind was in conflict as a battle between it's real nature, human justice, and the foreign force raged on.

Xi-Tiger could sense an unknown power within Epsilon, and fled immediately having killed the girl first.

Epsilon yells: "Xi-Tiger, I will never let you get Away!"

Epsilon is not the only creature of his kind. Somehow Another 'Birdman' with a similar body had been created. Although their bodies were identical, their minds were very different. Unknown to everybody, the mind of the Mysterious new 'birdman' was filled with an evil ambition

He also flew off in search of Xi-Tiger...



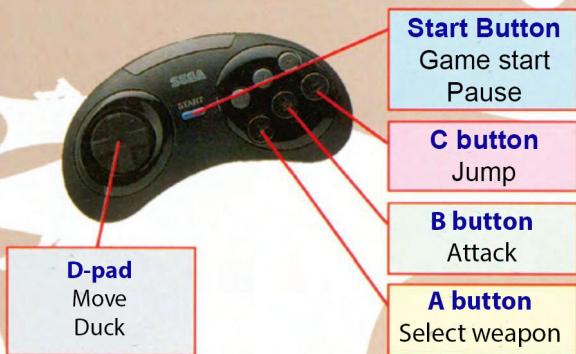
# ALIEN SOLDIER

## Operation Method

### <Controlling Epsion>

This is a single-player game. Before starting the game, connect the control pad to control port 1.

### Operating the control pad



The XYZ buttons will not be used. The operation method for a 3-button control pad is the same.

### Attack techniques



## Crouch

Press the D-pad down to duck and evade enemy attacks  
(If on the ceiling, press up on the D-pad)



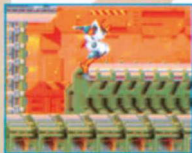
## Stand on Ceiling

Jump up and touch a ceiling to stand on it. Epsilon 2 is able to move left/right in this state. Press Jump to return to the ground.



## Jump on to Platform

Press the D-pad up and Jump simultaneously to jump on top of a higher platform.



## Jump off of Platform

Press the D-pad down and Jump simultaneously to jump off (step down) from a higher platform





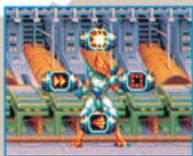
## Operation method

Selection mode



A button

Press A to enter weapon selection mode, and press left or right to change weapons. Press ABC to select.



\*You cannot move or attack while in weapon selection mode

## Switch attack mode

Press A while crouched to switch attack mode.

### ● Fixed Shot Mode

While on the ground or hovering, you will be fixed in place and can be quickly launched in eight directions. Also, while jumping, you can attack in eight different directions while jumping. Force energy depletes slowly.  
Body: White



### ● Free Shot Mode

Can attack in 8 directions while moving or jumping. Force energy depletes quickly.  
Body: Gold

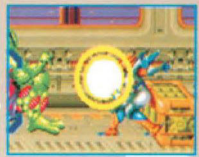




Attack while wielding 6 types of weapons (page 20)

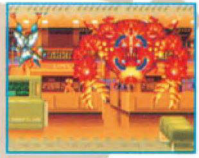
## Counter force

Tap Shoot twice to build a force field that repels enemy shots and converts them to Energy Stars.



## Eagle Eye

If you don't attack for a while, the weak point of the boss will be displayed.



## Operation method

Jump  C button

### Jump



### Hovering

Jump and press Jump again while in midair to stay above ground. Note that Epsilon 2 will remain stationary during this state. Press Jump to return to the ground.



### Step jump

If you Jump while hovering, you will be able to perform a second jump.

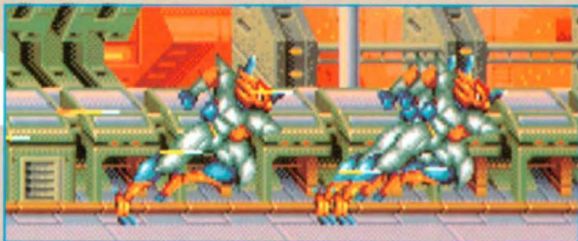






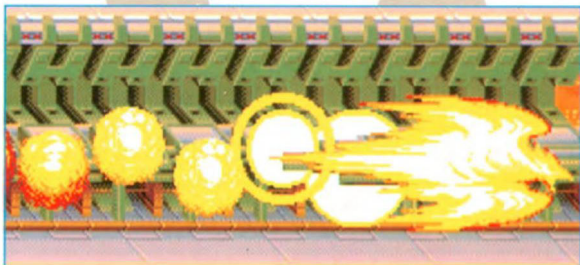
## Zero Teleport

Pressing the jump button while holding the down on the D-pad (or up on the D-pad if you are on the ceiling) while on the ground, jumping, or hovering will make you dash at high speed with invincibility for a small period of time. You can not be hit by enemies or enemy attacks while dashing.



## Phoenix Teleport

If your Energy Meter is full, Epsilon 2 will perform a "Phoenix Teleport," a devastating, flaming dash that will damage all enemies in his path at the cost of health.





# ALIEN SOLDIER

## How to play

<Battle prelude>

### Game Start

After the opening scene, the title screen will be displayed. Use the D-pad to highlight a mode and press the start button to select it.



**PASSWORD** : Only in SUPEREASY mode, you can continue to play from the where you stopped when you type in the password.

**GAME START** : The game will begin

**OPTIONS** : You can change the settings of the game (Page 13)

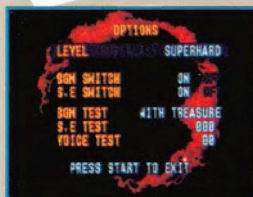
### PASSWORD (only for SUPEREASY mode)

Select the password option at the title screen to enter the screen as seen on the right. Use the left and right directional buttons to select a character, and use the up and down buttons to enter it. When you have entered all the characters, select SET and press the C button. Press the start button to return to the title screen.



## Options

Press the D-button up/down to select the option item, and left / right to change the setting. Press **START** to implement the changes and return to the Title Screen.



**LEVEL** : Set the difficulty using right and left on the D-pad

**SUPEREASY** : You can adjust the speed of the game while in the pause screen. You can continue based on password.

**SUPERHARD** : The final credits will be shown at the end of the game. The number of continues is limited.

**BGM · S,E SWITCH** : Enable / Disable music & sound effects

**BGM · S,E · VOICE TEST** Listen to the games music, sound effects and voice tracks  
Choose the music name or number using the D-pad, and select by pressing the A and C buttons

## How to progress

To carry out his revenge, Epsilon 2 will boldly fight his way through the many stages



# ALIEN SOLDIER

## How to play the game

### Weapons Set up! (Weapon selection screen)

#### Select Your Weapons

Select the 4 weapons you will use from the 6 weapons options. Use the D-pad to select a weapon, then press the Start or A or C button. (Press B to go back to the previous option) You can choose the same weapon more than once.



#### Choosing Your HUD

The status screen can be changed in 26 different ways from TYPE1 to TYPE26. Use the left and right buttons on the D-pad to select, then press the Start or A or C button. Press B to go back to the previous option.



#### Information about the HUD

The HUD is divided into the following categories, and you can choose your favourite type from among 26 combinations of these categories



Player and enemy health is displayed as a solid bar



You can display health and remaining force energy in numbers.



Remaining force energy is displayed as a gauge.



Hide a HUD elements amount



## Confirming your settings

After you have decided on your settings, press the start, A or C button (B button will return to the previous option)



## Confirm the operation!

You can practice before you begin the game here. Check your controls and weapons on this screen. The game will start when you press the start button.



# ALIEN SOLDIER

## How to play the game

### Understanding the HUD

#### HUD



- ① **Epsilon 2's life** : If this reaches 0, you will get a Game Over  
(You can keep playing if you have continues available)
- ② **Force energy**
- ③ **Enemy(Boss)'s life**
- ④ **Enemy(Boss)'s degree of damage** : The larger this value,  
the greater enemy damage
- ⑤ **Epsilon 2's life status**: Life is deducted when damage is inflicted  
If life is returned, will be shown as plus
- ⑥ **Weapons**
- ⑦ **Time left**: If this timer reaches 0, you will get a Game Over  
(You can keep playing if you have continues available)



# ALIEN SOLDIER



## Pause screen



### Score

Your available life will appear here if you press the B button when the game is

### Speed adjustment (SUPEREASY mode only)

Set the speed of the game using left and right on the D-pad

# ALIEN SOLDIER

## How to play the game

### Game over and Continue

### Results screen

When Epsilon 2 runs out of health, the following screen will be displayed, and your results will be shown.

#### ● How to read the results

RESULTS						
HIGH SCORE	00133666	PTS				
SCORE	00133666	PTS				
DESTROYED ENEMIES	0214					
PLAYER DAMAGE	0022					
STAGE	TIME LIMIT	SCROLL USED	BOSS USED	CLEAR TIME	CONTINUE	
11	03.20	00.31	XX.XX	XX.XX	001	
12	??.??	XX.XX	XX.XX	XX.XX	XXX	
13	??.??	XX.XX	XX.XX	XX.XX	XXX	
14	??.??	XX.XX	XX.XX	XX.XX	XXX	
15	??.??	XX.XX	XX.XX	XX.XX	XXX	

- ① High score
- ② Score
- ③ Number of enemies defeated
- ④ Amount of damage Epsilon 2 received during the game
- ⑤ Time spent during each stage and other (seen below)

Press left and right on the D-pad to view the other results.  
Press up and down on the D-pad to view the results of each stage.

#### How to read the time data

STAGE	TIME LIMIT	SCROLL USED	BOSS USED	CLEAR TIME	CONTINUE	
11	03.20	00.31	XX.XX	XX.XX	001	
12	??.??	XX.XX	XX.XX	XX.XX	XXX	
13	??.??	XX.XX	XX.XX	XX.XX	XXX	
14	??.??	XX.XX	XX.XX	XX.XX	XXX	
15	??.??	XX.XX	XX.XX	XX.XX	XXX	

CLEAR TIME	BOSS	BOSS	
XX.XX	001	GUSTHEAD	
XX.XX	XXX	????????	
XX.XX	XXX	????????	
XX.XX	XXX	????????	
XX.XX	XXX	????????	

- 1. Stage number
- 2. Time limit
- 3. Time until boss is reached
- 4. Time taken to defeat the boss
- 5. Time taken to clear
- 6. Number of game overs
- 7. Name of boss

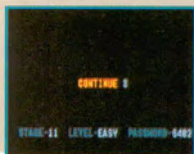


## Continue screen

By pressing the start button at the results screen, you will be directed to the continue screen. Depending on the difficulty, your screen will change as follows:

### SUPEREASY

If you press the start button before the timer runs out, it will change to the weapon selection screen and you will be able to continue with your health and energy replenished.



If the timer runs out, the game will end and you will return to the title screen. After a Game Over, if you enter your password in the password screen, you will be able to continue from where you stopped. Remember to write it

### SUPERHARD

You can only continue a limited number of times based on your current amount of credits. When continuing, your weapons energy value will not be replenished. Press the start button before the timer runs out!



# ALIEN SOLDIER

## Handling Weapons

In addition to the weapons you initially chose on the weapon selection screen, you can pick up and use different weapons while fighting.

There are weapons scattered throughout levels. When you pick up a weapon, it will replace the one you are currently using.

Picking up the same weapon as the one you are currently using will increase the Force Energy of that weapon.



If you attack a weapon pod, it will change to the weapon you're currently using!

Press A to switch to weapon selection mode. Use left and right on the D-pad to select a weapon, and press any of the A, B, or C buttons to confirm. Weapons have different effects depending on their type. The weapon you are using drains force energy as you use it, and when it runs out, you can no longer shoot it. Weapons that are not in use will slowly recover their Force Energy.



Weapon selection mode



## Life and force energy

When Epsilon 2 receives damage, the health will decrease, and when Epsilon 2 uses weapons, his force energy will decrease. When an enemy is defeated or an enemy bullet is destroyed using Counter Force, a health item will appear. Force energy will automatically regenerate as a weapon is not being used

## Item

### Life item

A small amount of health will return



A large amount of health will return



Health will return completely, maximum health will increase



# ALIEN SOLDIER

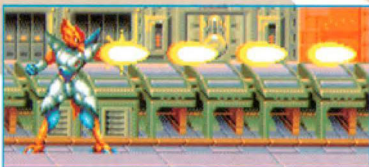
## Handling Weapons

### Weapon Descriptions

#### BUSTER FORCE

Fires a single stream of bullets one direction

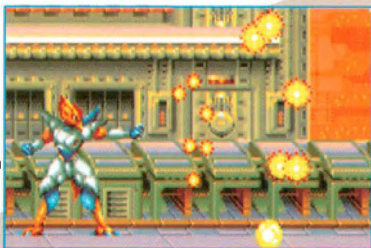
Strength: Weak  
Depletion Speed: Slow



#### RANGER FORCE

A weapon that simultaneously shoots bullets in four directions

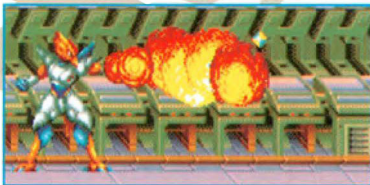
Strength: Medium  
Depletion Speed: Medium



#### FRAME FORCE

Flame-throwing weapons that is effective at close range  
Not effective against mechanical enemies.

Strength: Strong  
Depletion Speed: Slow





## HOMING FORCE

Weapons that tracks the enemy.

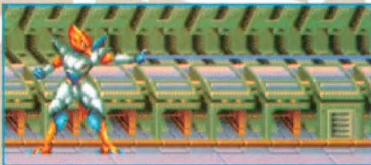
Strength: Medium  
Depletion Speed: Medium



## SWORD FORCE

Weapons that extend in a straight and sharp line like a sword

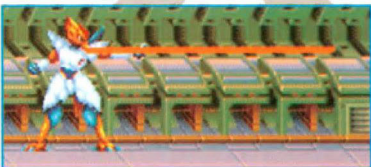
Strength: Strong  
Depletion Speed: Fast



## LANCER FORCE

A powerful one-hit-kill type weapon.  
Not effective against biological enemies.

Strength: Strong  
Depletion Speed: Fast





# ALIEN SOLDIER

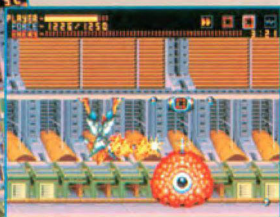
## Act Introduction

<Seeking revenge and your identity>

The act is divided into many stages.  
Let's take a look at some of them

### ACT.1 Stage 1~4

Epsilon 2 follows Xi Tiger, who hijacks an Airbus and tries to escape through the beltway and into space.

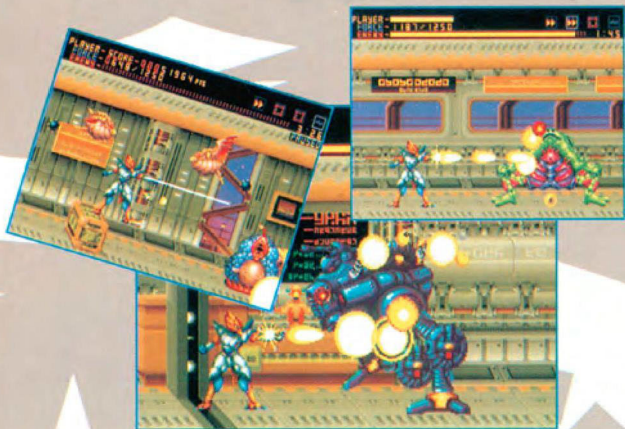




# ALIEN SOLDIER

## ACT.1 Stage 5~7

Proceed from the spaceport lobby to the boarding gate!



## ACT.1 Stage 8~9

Epsilon 2 gets on an Airbus and confront his nemesis, Xi Tiger.



# ALIEN SOLDIER

## Act Introduction

### ACT.2 Stage 10~13

The battle with the Xi Tiger wrecked the Airbus, and Epsilon 2 landed deep in the jungles of South America. Sensing Epsilon 1's evil will, Epsilon 2 is headed for the old Scarlet laboratory!





## ACT.2 Stage 14~17

Epsilon 2 has infiltrated the old Scarlet Research Institute tower, and it's up to you to climb the tower while it rises above the atmosphere.



Epsilon 2's fight still continues

# ALIEN SOLDIER Characters

<Heretics born into this world>

## Epsilon 2

---



The main character of this game. He has the ability of space-time manipulation, and an immaculate will.

When his best friend Kaede Nanase was murdered, he threw himself into battle to take revenge, but in the process, he discovers the purpose of his existence.

When he was a human, he was closed off to people because of his special psychic abilities. The only person he could trust was Kaede Nanase.



Human

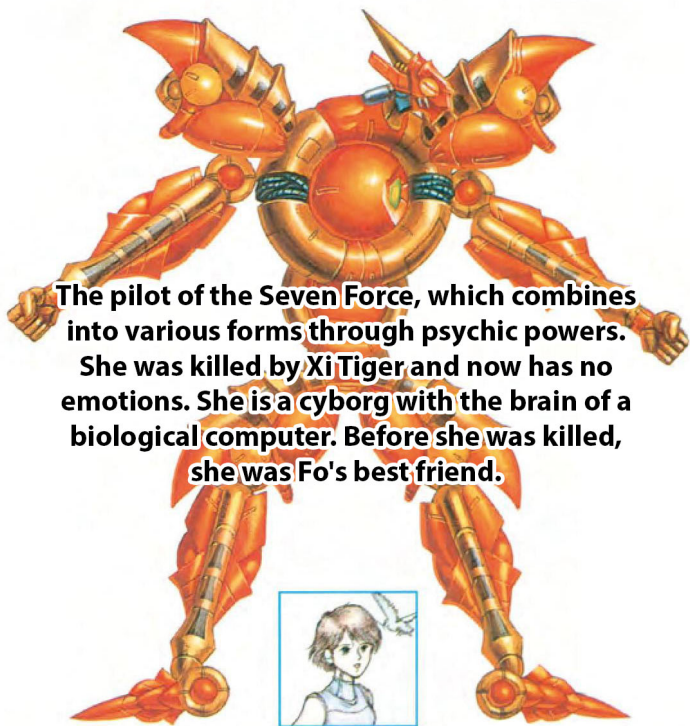
Real name: Fo Misaki (12)

Gender: Male

Born : South America



## Seven Force Kaede



**The pilot of the Seven Force, which combines into various forms through psychic powers.**

**She was killed by Xi Tiger and now has no emotions. She is a cyborg with the brain of a biological computer. Before she was killed, she was Fo's best friend.**

Human

Real name: Nanase Kaede (14)

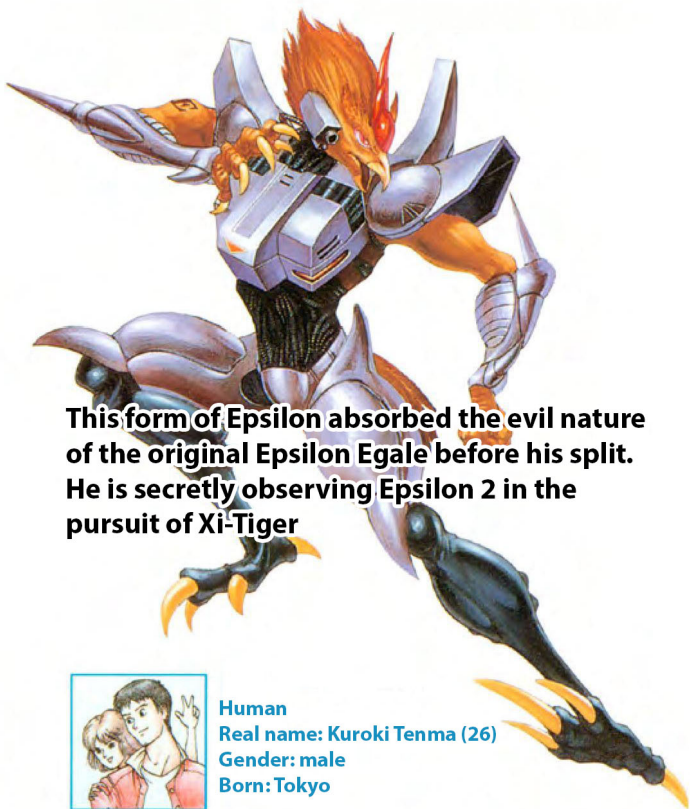
Gender: Female

Born: Hiroshima

## Characters

Epsilon 1

*Epsilon-1*



**This form of Epsilon absorbed the evil nature of the original Epsilon Egale before his split. He is secretly observing Epsilon 2 in the pursuit of Xi-Tiger**



**Human**  
**Real name: Kuroki Tenma (26)**  
**Gender: male**  
**Born: Tokyo**



## Xi Tiger

---



Human

Real name: Kosatsu Kyosuke (29)

Gender: Male

Born: Osaka



**The complete life form of the Bengal tiger. After Epsilon's downfall, he sits as the boss of the secret society Scarlet. He is the one who killed Kaede Nanase, awakening Epsilon 2's desire for revenge and fighting.**

**He is a master of the Flaming Tiger Fist, an ancient assassination fist from the Kansai region. He is also a womanizer.**



# ALIEN SOLDIER

## Enemy Characters

<List of Scarlet Members>

There are many enemies that stand in the way of Epsilon 2. Let's take a look at some of them.

### Jet Ripper

Name: Brutal Taro Insect (25)  
Gender: Male

A modified life form with a hundred legs. He intimidates his enemies with his steel fangs and the deadly poison that fills his body.



### Android

Name: Kyosuke Hosango (23)  
Gender: Male

A modified life form of a samurai ant. He has mastered the martial arts and uses his speed to attack with kicks. He is a childhood friend of Jet Ripper, and they are currently lovers.





## Shell-shogun

Real name: Kamekashira Mansaku (40)  
Gender: Male

Modified turtle life form. When someone killed his lover, he turned into a wandering killer to avenge his death. He controls a giant sword, Midgard, and has mastered his own unique swordsmanship.



## Honey Viver

Real name: Daikazoku Hachibei (52)  
Gender: Male

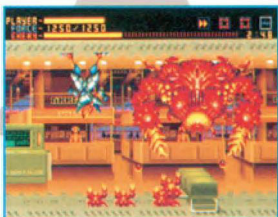
A modified life form of the Great King Bee. He dreams of establishing a large flower garden by creating beehives one after another through parthenogenesis. He has no intention of fighting, and joins "Scarlet" as a servant.



## Madame Baba

Real name: Onigoroshi Kyoko (28)  
Gender: Female

A modified life form of a crab. Mother of 512 small crabs. She earns her living by driving a long-distance dump truck. Perhaps it's because she used to be the head of a ladies' club, because she is fast to start a conflict.





# ALIEN SOLDIER

## Game Tips

### <Alien Soldier Codes>

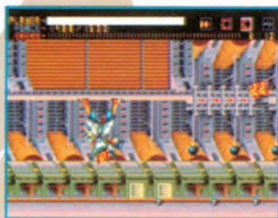
You can't fight with only your heart for revenge. Let me teach you the rules for fighting!

#### 1. Destroy enemy bullets with counterforce!

Use Counter Force to destroy enemy bullets and life items will appear. Your life will be restored. And when your life is maxed out, unleash a Phoenix Teleport!



#### 2. Make full use of the Phoenix Teleport!



When your life is maxed out, use the Phoenix Teleport as much as possible. You'll lose some health, but it's an effective way to wipe out the enemy. This is the time when Phoenix Teleport is OK!

## 3. Press buttons when falling or getting caught!

When you fall into a hole or get caught by an enemy, hit the buttons quickly and repeatedly. Especially when you fall into a hole, your life will decrease, so hit the buttons quickly!



## 4. Identify weaknesses!



During a boss battle, if Epsilon 2 doesn't attack or uses the Homing Force, you can see its weak point with the Eagle Eye. If you attack that their weak point, you can defeat it quickly. You can also use Phoenix Teleport on the weak points for massive damage!

## 5. Don't waste your time!

Each stage must be cleared within a time limit, and a warning will sound when the clock has less than 30 seconds left, so don't waste any time!





### Epsilon

---

**Official name Epsilon Eagle. The head of the vicious secret society Scarlet. However, in the struggle against the Sierrans, he was blown into space-time and split into Epsilon 1 with its pure evil will and Epsilon 2 with its innocent will and space-time manipulation Zero Teleport.**

### Epsilon 1

---

**After Epsilon 1 goes missing, it becomes a parasite of Tenma Kuroki, a martial artist of the ancient Japanese martial art of Arashi-Kenjutsu. He monitors Epsilon 2 as it chases after Xi-Tiger.**

### Epsilon 2

---

**A parasite inside the body of Misaki Fo, a young boy with supernatural powers. Epsilon 2 is a parasite that grows into a human through encounters with the human mind. However, after the murder of best friend Kaede Nanase by Xi-Tiger, he returns to his true form and is led into battle.**



## Scarlet

---

A vicious secret society organized by artificial organisms (modified and complete life forms) created by super genetic engineering, with the goal of eradicating all humanity. The artificial organisms possess advanced knowledge and powerful fighting skills, and some of them are said to have the special ability to parasitize humans, animals, and machines. Scarlet was originally a research organization established to make effective use of their special abilities.

## X-Age

---

A general term for boys and girls with supernatural abilities. Fo Misaki and Kaede Nanase are included, and Kaede Nanase, who has particularly powerful telekinetic powers, was trained to be the pilot of Scarlet's mobile weapon, Seven Force.

## ● ● Precautions for use ● ●

### ● Make sure the power is off

Always turn the power switch off before inserting or removing cartridges.



### ● Cartridges are delicate

Do not give the cartridge a strong shock. Do not disassemble the cartridge.



### ● Do not touch the terminals.

Do not touch the terminals of the cartridge or wet the cartridge with water as this may cause damage to the cartridge.



### ● Be careful where you store it.

When storing cartridges, avoid extremely hot or cold areas, or in humid conditions.



### ● Do not clean cartridge with chemicals

Do not use chemicals such as thinner or benzine to clean the cartridge!



### ● When playing the game

Playing games for a long time can tire your eyes. For your health, take a 10-20 minute break every hour when playing games. Also, try to play your games as far away from the TV screen as possible.


## ● ● ● ● Health Precautions ● ● ● ●

In rare cases, strong light stimulation, flashing lights, or TV screens can cause temporary muscle cramps, loss of consciousness, or other disturbances in some people. If you have any such experience, be sure to

Do not connect the Mega Drive to a projection TV (screen projection TV), as this may cause screen burn due to the amount of afterimage light.

MEGA DRIVE

**This Page Is Intentionally Left Blank**



ALIEN SOLDIER



This user's manual is  
made of recycled  
paper certified by  
the Eco Mark.

**G-4130** 672-2271

© SEGA

**SEGA ENTERPRISE Co.**