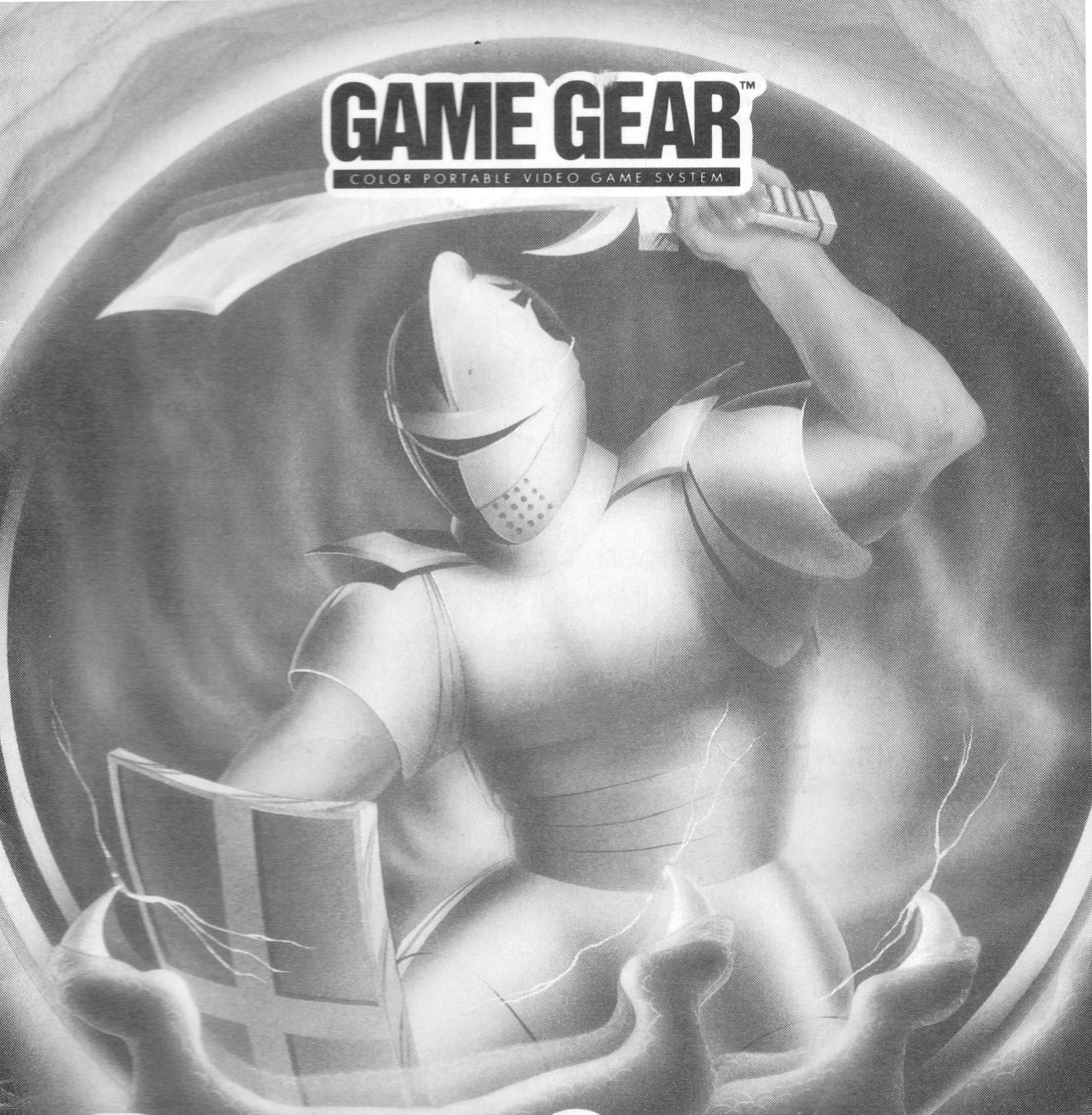


**GAME GEAR™**  
COLOR PORTABLE VIDEO GAME SYSTEM



# DRAGON CRYSTAL™

**SEGA™**

## Starting Up

1. Set up your Sega Game Gear System as described in its instruction manual.
2. Make sure the power switch is OFF. Then insert the Dragon Crystal cartridge into the Game Gear unit.
3. Turn the power switch ON. In a few moments, the Dragon Crystal Title screen appears.
4. If the Title screen doesn't appear, turn the power switch OFF. Make sure your system is set up correctly and the cartridge is properly inserted. Then turn the power switch ON again.

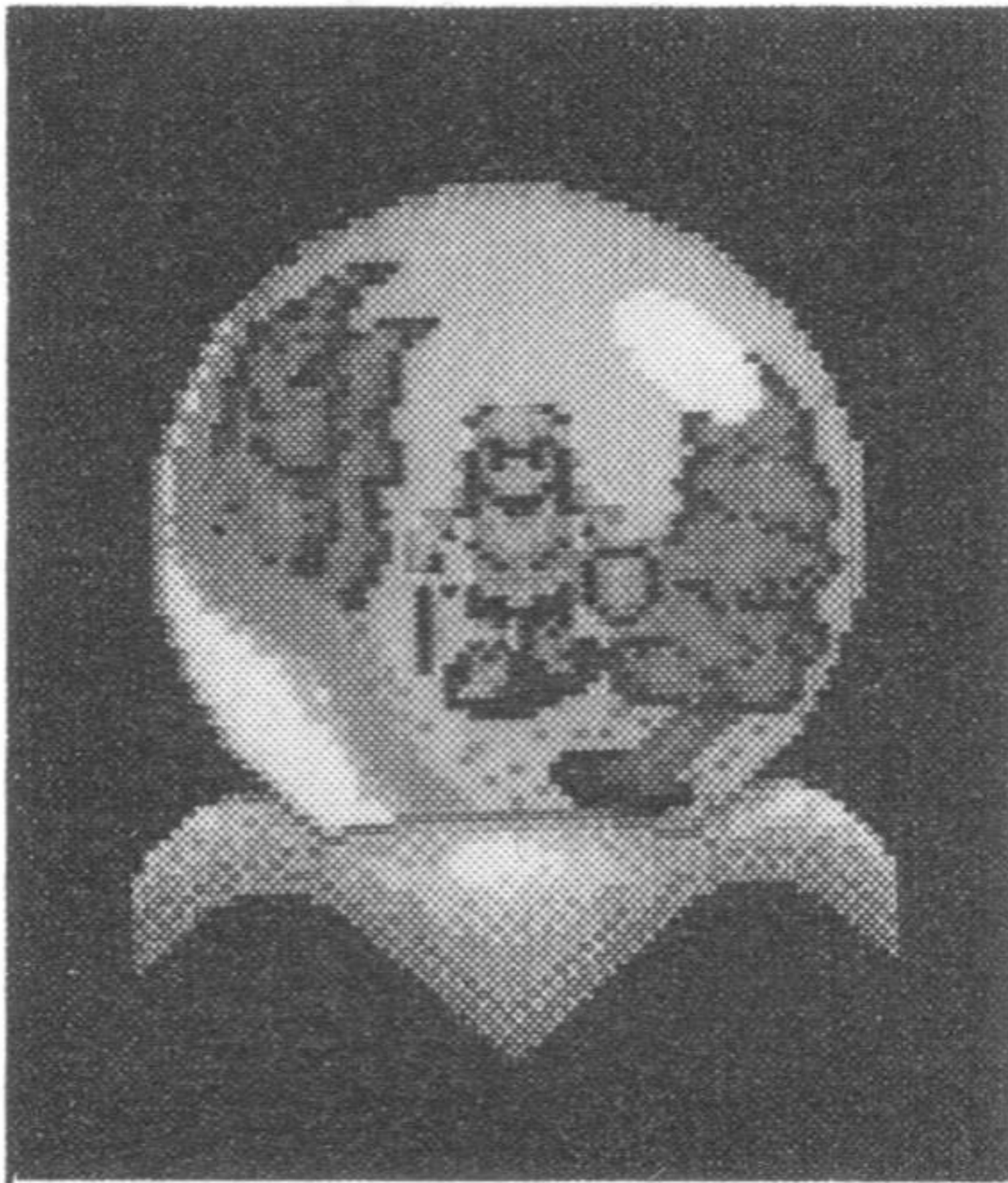
**Important:** Always make sure the power switch is turned OFF before inserting or removing the Sega cartridge.

**Note:** Dragon Crystal is for one player only.

Insert Sega Cartridge



## *Is It Just a Bad Dream?*



One late afternoon, as you ride down the same old street on your bike, you see an alley you've never noticed before. You make a turn thinking it could be a shortcut home. Whistling your favorite tune, you pedal down the alley. All of a sudden a small antique shop jumps into your sight. You park your bike and enter

the musty shop. The first thing that grabs your attention is a mysterious light coming from what seems to be a crystal ball on a dust-covered shelf. You approach the crystal and gaze into it until a powerful, unknown force pulls you in. . .

You don't know how much time has passed or what has happened. But as you look around, you realize you're in a forest and you're not alone! Whenever you walk, a huge egg follows you! You wander around for awhile wondering if you are just dreaming or if all of this is really happening. When you turn around, you see a couple of nasty looking green blobs and vicious green frogs trying to attack you! The only thing you can do now is fight! Luckily, you find a dagger. With a couple of stabs you destroy the beasts. You walk around some more and pick up various items – from weapons to magic potions – scattered about. You eventually find out that this strange world is nothing but an intricate maze crawling with frightful creatures!

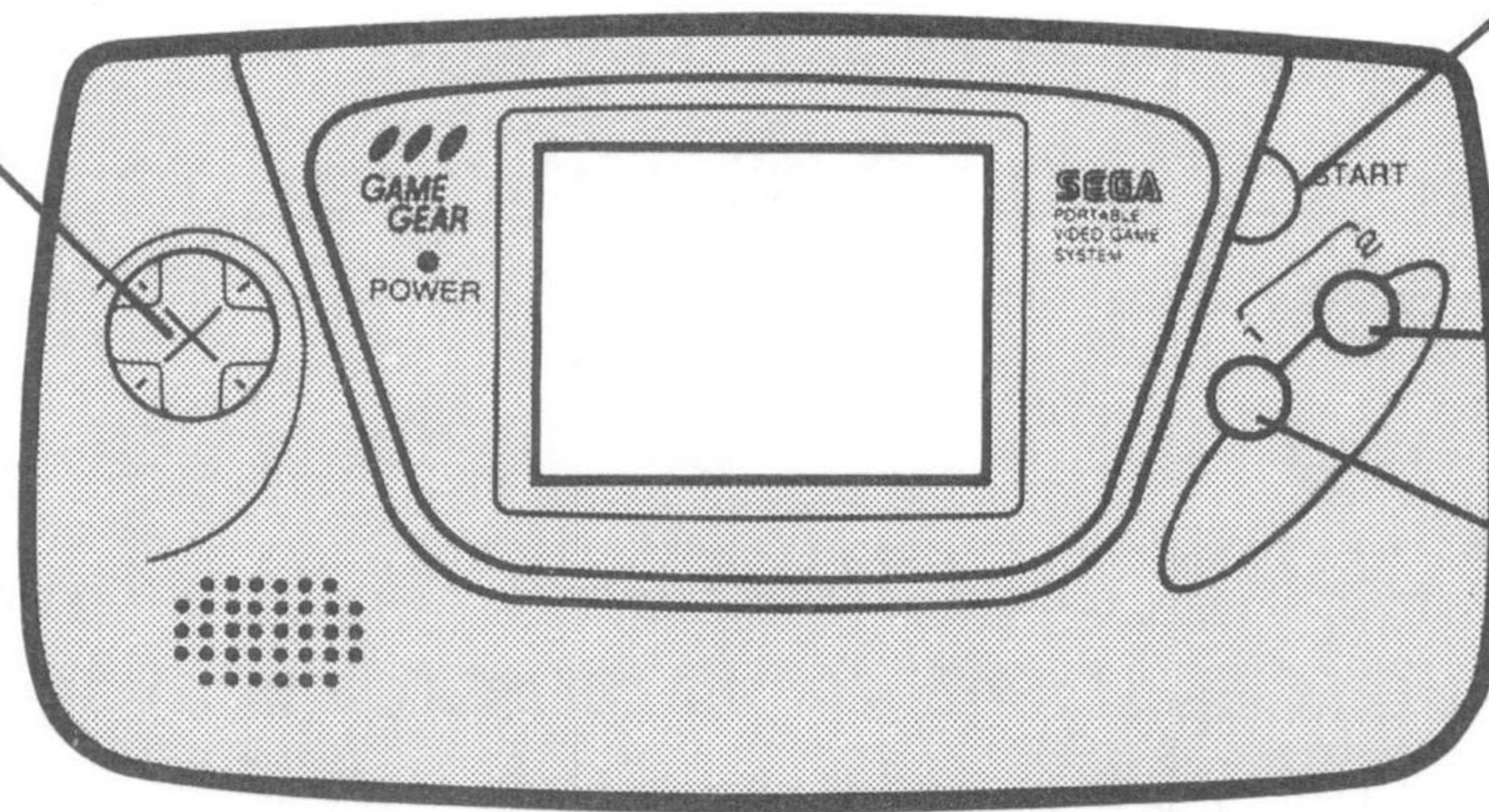
You must successfully exterminate the ferocious beasts – or else you can never escape from this tormenting nightmare!

# Take Control!

For best game play, learn the different button manuevers before you start.

Directional Button  
(D-Button)

Start Button



Button 2

Button 1

## Directional Button (D-Button)

- Press up, down, right or left to move the character in those directions.
- Press toward an enemy and hold to attack continuously, or press once in the direction of the enemy to attack for one turn.
- Press to select a command.
- Press to select an item.

## Start Button

- Press to start the game.
- Press and hold to move quickly.

## Button 1

- Press to see the Status screen.
- Press to cancel a command.

## Button 2

- Press to pick up an item.
- Press several times to find hidden exits.
- Press to see the Command window on the Status screen.
- Press to confirm a command.

**Note:** To pause the game, do not press any button.

## Getting Started



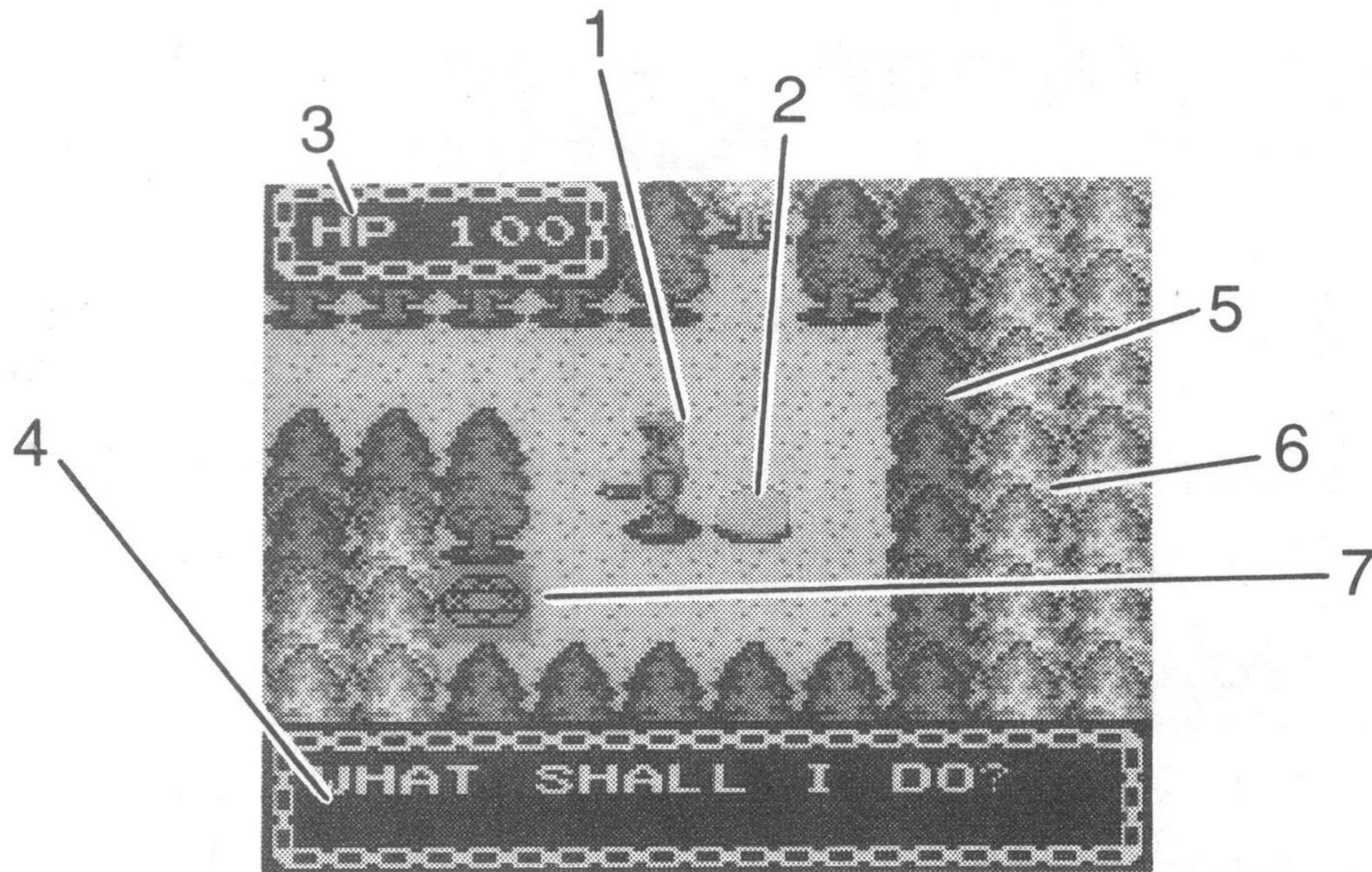
At the Title screen, press Start to begin the game. Your goal is to find a way out of the bizarre world you've entered. To do so, you must survive thirty levels of mayhem. On each level, you may battle ferocious beasts as you search for the Warp Zone –

a marked spot on the ground that takes you to the next level. The Warp Zone may appear right away or you may have to do a little exploring. A word of advice – do not step on the Warp Zone until you have gained strength!

## What Your Screens Show

There are two types of screens that you should be familiar with. The Field Screen is where the actual battles take place. When you press Button 1, the Status Screen appears. On the Status Screen, you can select the item and the command you want to use. You can also see how you are doing in the game.

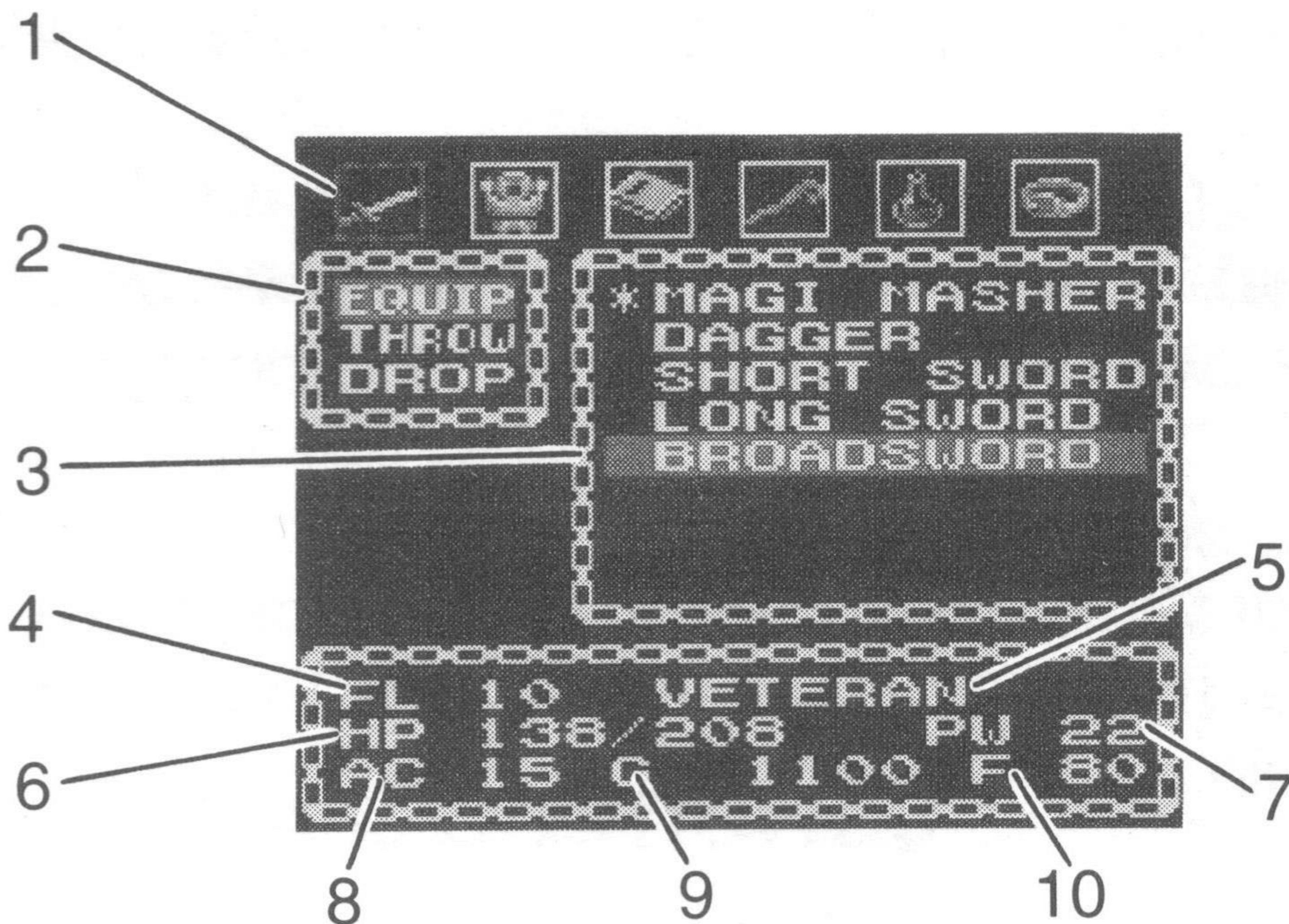
## The Field Screen



1. **You**
2. **Egg** This mysterious egg hatches when you reach a certain level. As your level goes up, the dragon gets bigger.
3. **Hit Point Window** This is where your Hit Points appear.
4. **Game Message Window**
5. Areas you've already explored
6. Areas you haven't yet explored
7. **Warp Zone**

**Note:** The Hit Point Window and the Game Message Window do not appear when you are walking around.

## The Status Screen



1. **Item Icons** are the different symbols of the various items that you can pick up.
2. **Command List** Shows the different commands you can use. (See *Know Your Commands*, page 9.)
3. **Item List** Shows the different items that you have.
4. **FL (Field Level)** indicates the level you are on.
5. Your rank is shown here. You start off as an Apprentice but as you destroy enemies your rank goes up. When your rank goes up, the maximum number of HP (Hit Points), PW (Power) and AC (Armor Class / defensive power) you can have increases.
6. **HP (Hit Points)** indicates how much stamina you have. When attacked by an enemy you lose some HP. When your HP reaches zero, you die. The number on the left is your present HP. The number on the right is the

maximum number of HP you can have. You can regain any HP that you have lost by walking around as long as you have some food. If you're out of food, your HP will start decreasing.

7. **PW (Power)** indicates the amount of power you have. The more power you have, the more damage you can do.
8. **AC (Armor Class)** indicates how much defensive power you have. The higher the AC number, the less damage you sustain.
9. **G (Gold)** indicates the amount of gold you have. If you die and don't have enough gold, you may not be able to continue the game from where you left off. (See *Game Over and Continue*, page 11.)
10. **F (Food)** is the amount of food you have. You need food to keep you going. You'll find extra food in the labyrinth.

## ***Picking Up and Using Your Items***

You set out for the labyrinth with a dagger in hand, but it won't get you very far. Once you get inside, you can collect other items (including weapons, armor and magic items). To pick up an item, stand on top of it and press Button 2. When your list of items becomes full a message appears telling you that you won't be able to carry any more. In that case, you can drop any items you think are unnecessary.

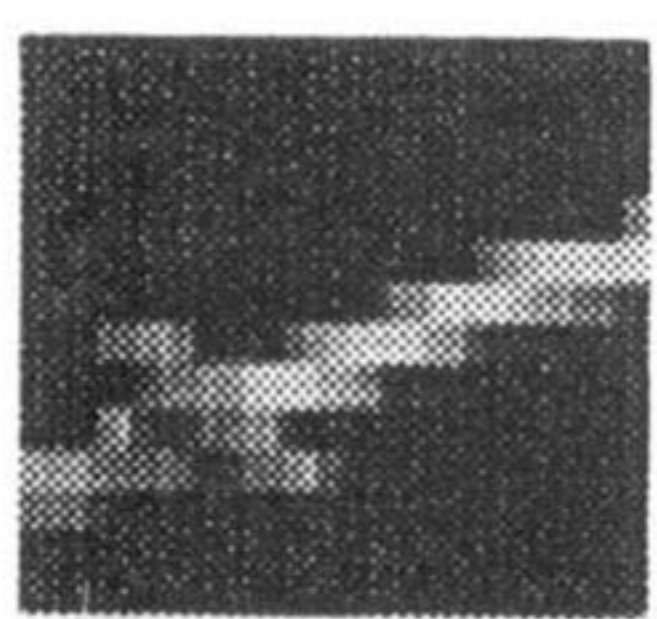


To use your items, press Button 1 to see the Status Screen. Press the D-Button left or right to highlight the Item Icon you want to select. The list of items you have appears on the Item List. When you press Button 2, a red flashing bar appears on the Item List. Press the D-Button up or down to move the red flashing bar to the item you want to select. Then press Button 2 to see the Command List. Press the D-Button to move the red flashing bar on the Command List to the command you want to use. Then press Button 2 to select the command.

## ***Know Your Commands***

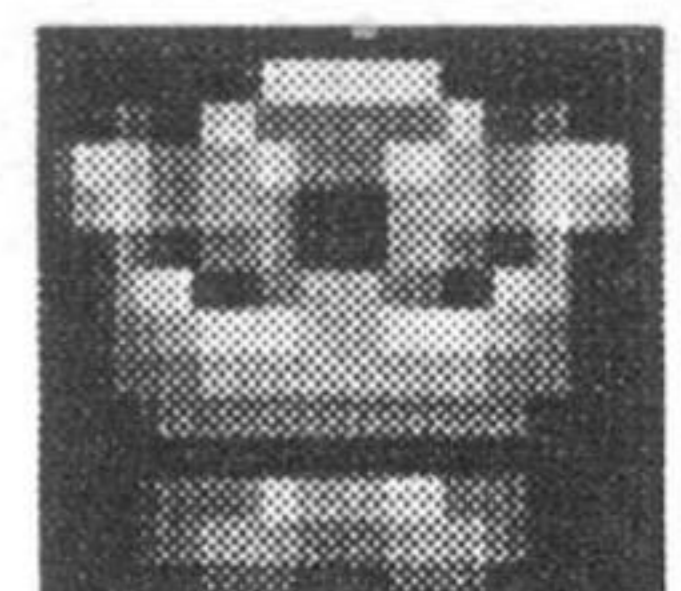
1. Select **Use** to use a book, rod or potion.
2. Select **Equip** to use a weapon, armor or ring.
3. Select **Throw** to throw items toward an enemy.
4. Select **Drop** to drop an item that you think is unnecessary.

## ***Your Valuable Gear***



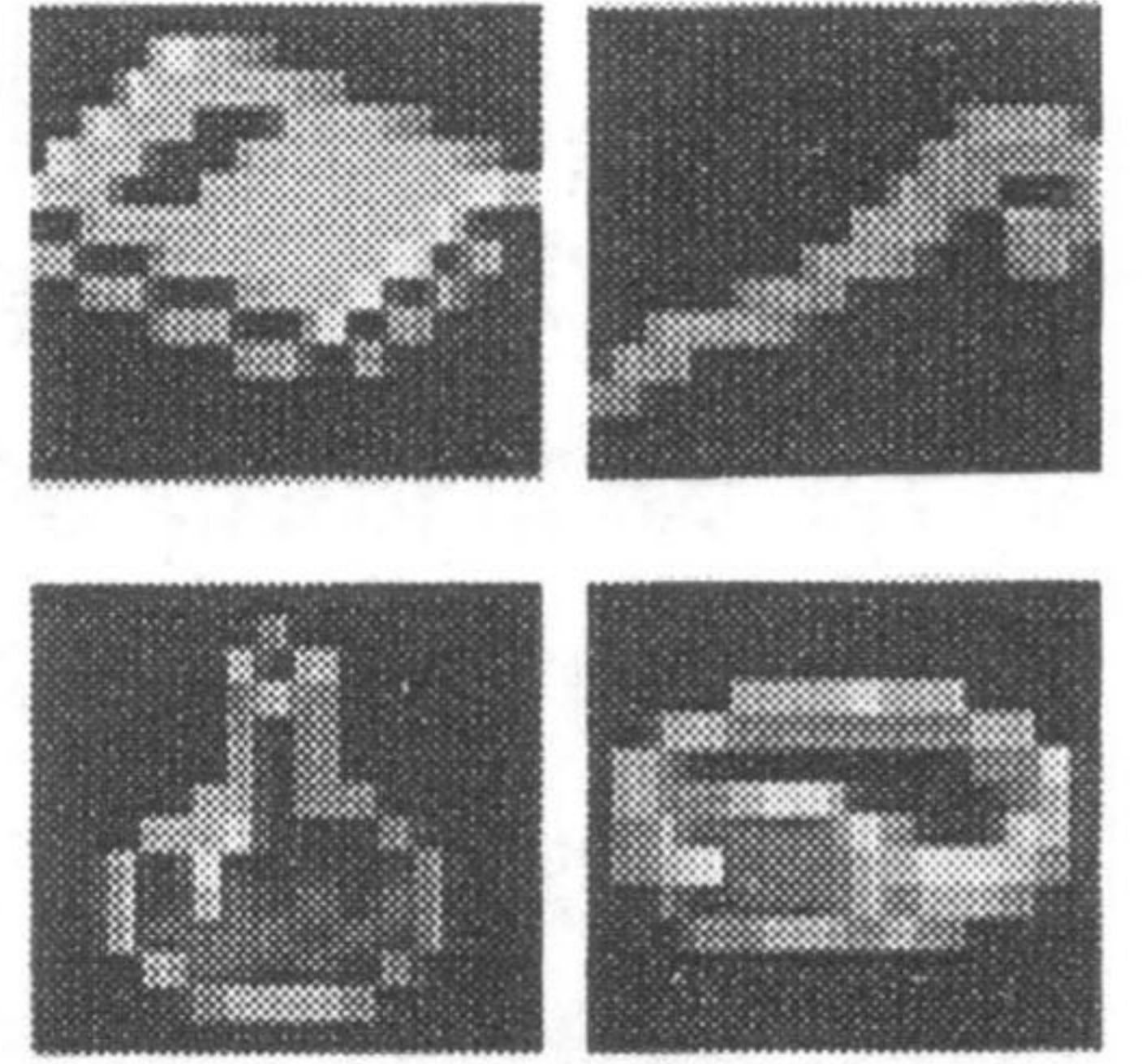
**Weapons** Include many types of swords. Some swords do more damage to certain enemies than others.

**Armor** Gives you protection.

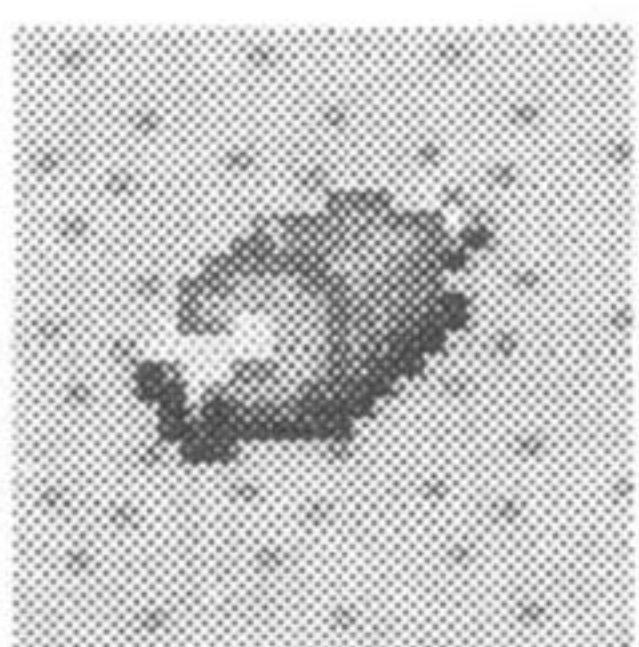
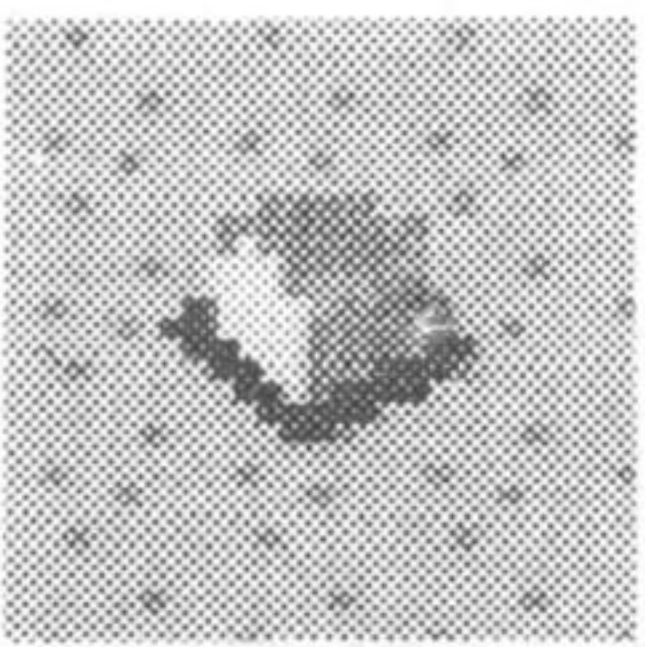


**Note:** As your rank goes up, you'll find weapons and armor that are more powerful than what you already have.

**Books, Rods, Potions and Rings** When you "use" these items, some will help you and some won't. When thrown at enemies, some will do damage and some may make them stronger. When you pick up these items for the first time, they are just called by a certain color. You must use them first to find out what each of these items does.

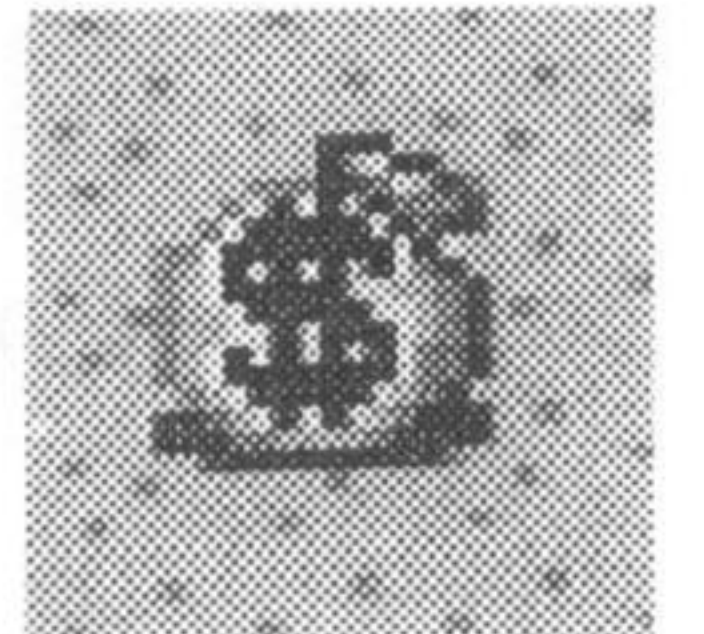


## ***Other Items Not Listed on the Status Screen***

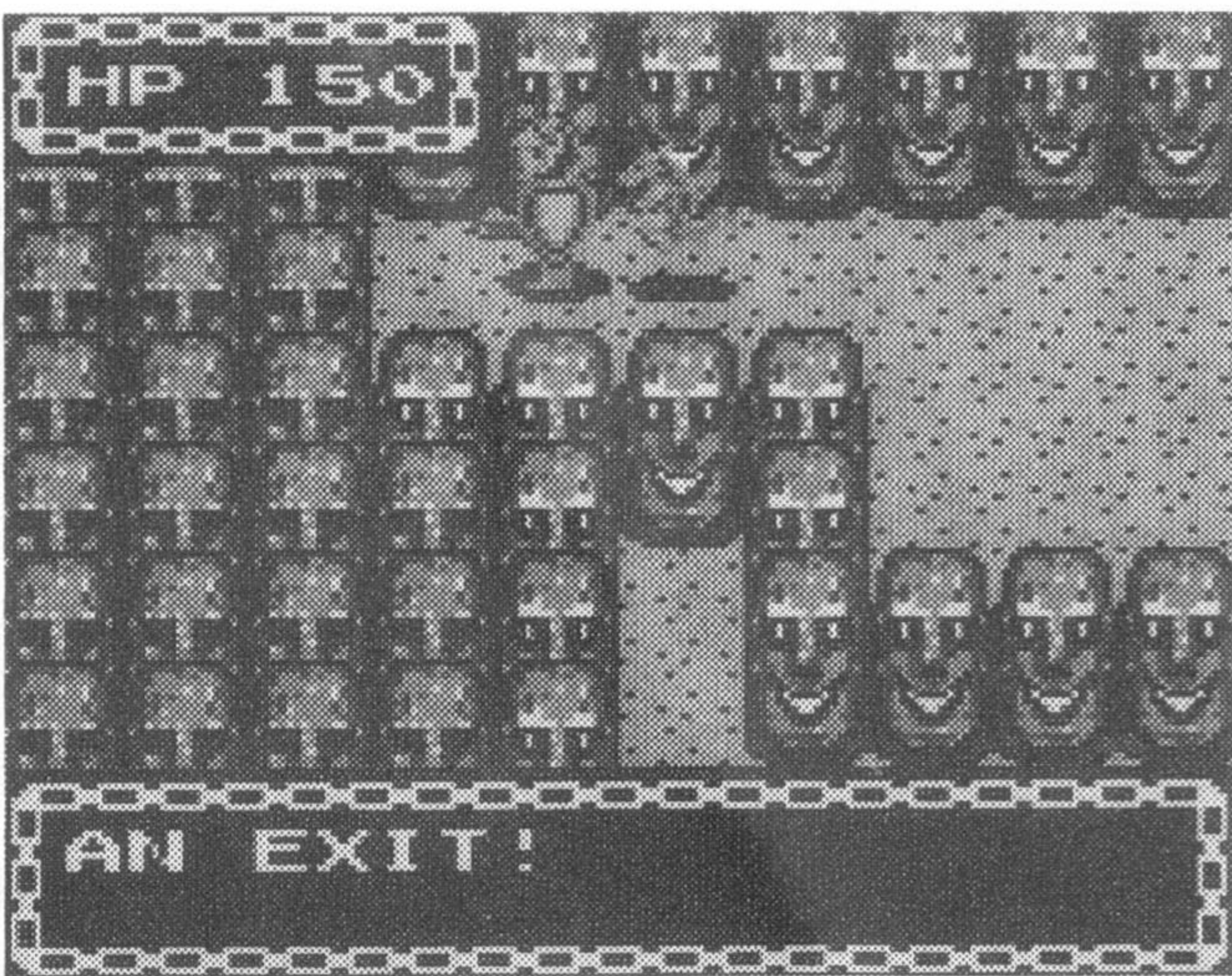


**Food** Bread adds 10-30 points and Meat adds 31-50 points to your Food Gauge. The limit of how much food you can carry is 99.

**Gold** Adds 5-15 points to your Gold gauge.



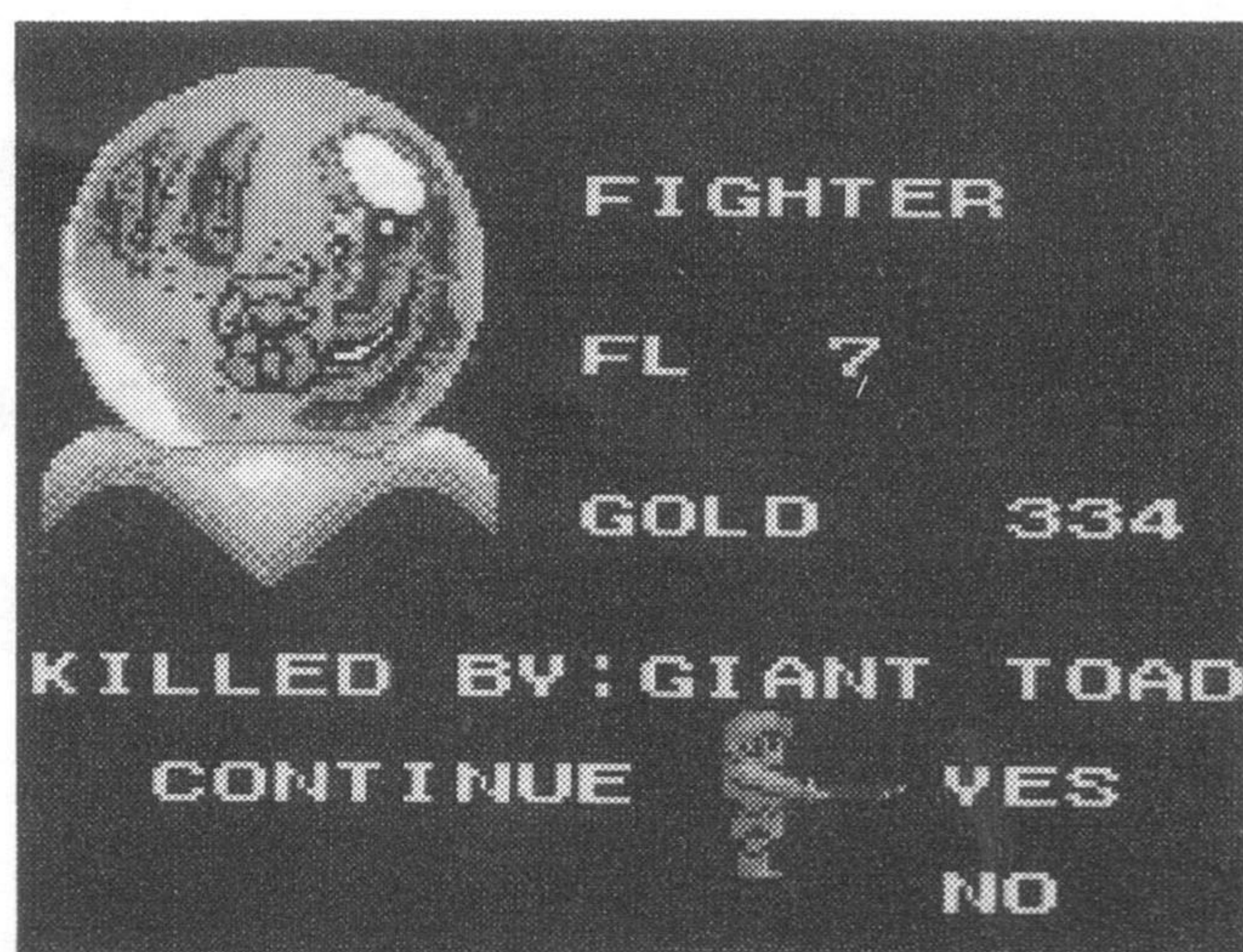
## ***Stuck?***



You're walking in circles, and you can't find a way out or a way in. What can you do? Face an obstacle or an area that looks suspicious and press Button 2 several times to find a hidden path.

## Game Over and Continue

When you lose all of your HP, you die. To continue, you must have enough gold. (There isn't a set amount that you must have in order to continue.) If you have enough gold and wish to continue, select Yes on the Game Over screen and press Button 2.

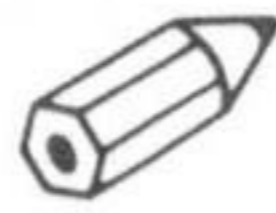
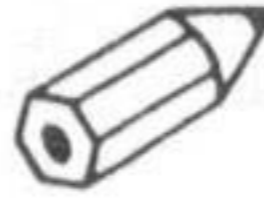


## Survival Tips

- Destroy as many enemies as possible to get stronger.
- Read all messages.
- Try not to let your enemies surround you.
- Some enemies won't attack you unless you touch them.
- Collect as many items as possible. Remember though, some items may be cursed!
- Hidden paths are found on Level Four and above.
- Conserve food! When you are near your maximum food points, don't eat until your reserve is almost empty.
- For game play information, call 1-415-871-GAME.

## ***Handling This Cartridge***

- This Cartridge is intended exclusively for the Sega Game Gear™ System.
- Do not bend, crush or submerge in liquids.
- Do not leave in direct sunlight or near a radiator or other source of heat.
- Be sure to take an occasional rest during extended play.

 memo 

 memo 

## Limited Warranty

Sega of America, Inc., warrants to the original consumer purchaser that this Cartridge shall be free from defects in material and workmanship for a period of ninety days from the date of purchase. If a defect covered by this limited warranty occurs during this 90-day warranty period, Sega will repair or replace the defective cartridge or component part, at its option, free of charge.

This limited warranty does not apply if the defects have been caused by negligence, accident, unreasonable use, modification, tampering, or any other causes not related to defective materials or workmanship.

To receive warranty service, call the Sega Consumer Service Department at:

**1-800-USA-SEGA**

**DO NOT RETURN YOUR CARTRIDGE TO YOUR RETAIL SELLER.** Return the cartridge to Sega Consumer Service only. Please call first for further information.

If the Sega technician is unable to solve the problem by phone, we will provide you with instructions on returning your defective cartridge to us. The cost of returning the cartridge to Sega's Service Center shall be paid by the purchaser.

### **Repairs After Expiration of Warranty**

If your Cartridge requires repairs after expiration of the 90-day limited warranty period, you may contact the Sega Consumer Service Department at the number listed above. If the technician is unable to solve the problem by phone, he will advise you of the estimated cost of repair. If you elect to have the repair done, you will need to return the defective merchandise, freight prepaid and insured against loss or damage, to Sega's Service Center with an enclosed check or money order payable to Sega of America, Inc. for the amount of the cost estimate provided to you by the technician. If, after inspection, it is determined that your cartridge cannot be repaired, it will be returned to you and your payment will be refunded.

### **Limitations on Warranty**

Any applicable implied warranties, including warranties of merchantability and fitness for a particular purpose, are hereby limited to ninety days from the date of purchase and are subject to the conditions set forth herein. In no event shall Sega of America, Inc., be liable for consequential or incidental damages resulting from the breach of any express or implied warranties.

The provisions of this limited warranty are valid in the United States only. Some states do not allow limitations on how long an implied warranty lasts, or exclusion of consequential or incidental damages, so the above limitation or exclusion may not apply to you. This warranty provides you with specific legal rights. You may have other rights which vary from state to state.

# **GAME GEAR™**

COLOR PORTABLE VIDEO GAME SYSTEM

Dragon Crystal and Game Gear are trademarks of  
Sega of America, Inc.

©1991 Sega of America, Inc.

Sega of America, Inc. P.O. Box 2167, South San Francisco, CA 94080

Printed in Japan <672-0461>