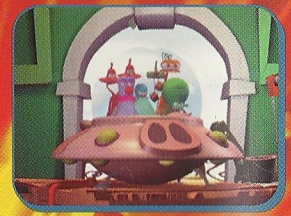
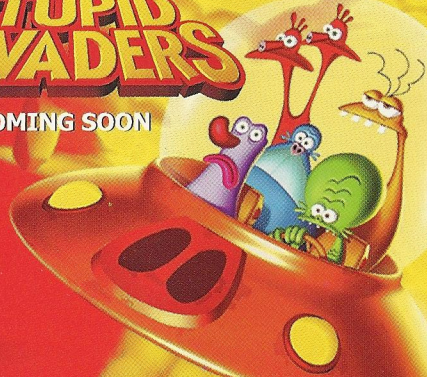


Stupid Idiots Need Your Help!

Five bumbling aliens are being hunted by the evil Dr. Sakarin. To save them, you'll crack puzzles, interact with a cast of freaks, and overcome the most deadly of all -- their own mind-boggling idiocy. These and other outlandish perversions await in the cartoon universe of ...

STUPID INVADERS

COMING SOON



© UbiSoft. Stupid Invaders is a trademark of UbiSoft Animation.

Dreamcast



GRANDIA II



625 Third Street, 3rd Floor - San Francisco, CA 94107 - Licensed from ESP/Game Arts by Ubi Soft Entertainment. Original game © 2000 Game Arts. English Translation © 2000 Ubi Soft Entertainment. Grandia is a trademark of Game Arts Co., Ltd. Character designs by Youshi Kameo. World designs by Katsumi Aizaki, Kanji Mizuno and Masashi Hazama. Ubi Soft Entertainment and the Ubi Soft logo are registered trademarks of Ubi Soft, Inc. All other trademarks belong to their respective holders. All rights reserved.

Sega is registered in the US Patent and Trademark Office. Sega, Dreamcast and the Dreamcast logo are either registered trademarks or trademarks of Sega Enterprises, LTD. All Rights Reserved. Made and printed in the USA. WARNING: Operates only with NTSC televisions and Sega Dreamcast systems purchased in North and South America (except Argentina, Paraguay and Uruguay). Will not operate with any other televisions or Sega Dreamcast systems. Product covered under one or more of the following U.S. Patents: 5,460,374; 5,525,770; 5,627,009; 5,688,173; 4,442,466; 4,454,594; 4,462,076; Re. 35,839; Japanese Patent No.2879538, (Patents pending in U.S. and other countries). Canada Patent No. 1,183,276. The ratings icon is a trademark of the Interactive Digital Software Association. Sega of America Dreamcast, Inc. P.O. Box 7639, San Francisco, CA 94120.



T-17716N

WARNINGS Read Before Using Your Sega Dreamcast Video Game System

CAUTION

Anyone who uses the Sega Dreamcast should read the operating manual for the software and console before operating them. A responsible adult should read these manuals together with any minors who will use the Sega Dreamcast before the minor uses it.

HEALTH AND EPILEPSY WARNING

Some small number of people are susceptible to epileptic seizures or loss of consciousness when exposed to certain flashing lights or light patterns that they encounter in everyday life, such as those in certain television images or video games. These seizures or loss of consciousness may occur even if the person has never had an epileptic seizure.

If you or anyone in your family has ever had symptoms related to epilepsy when exposed to flashing lights, consult your doctor prior to using Sega Dreamcast.

In all cases, parents should monitor the use of video games by their children. If any player experiences dizziness, blurred vision, eye or muscle twitches, loss of consciousness, disorientation, any involuntary movement or convulsion, IMMEDIATELY DISCONTINUE USE AND CONSULT YOUR DOCTOR BEFORE RESUMING PLAY.

To reduce the possibility of such symptoms, the operator must follow these safety precautions at all times when using Sega Dreamcast:

- Sit a minimum of 6.5 feet away from the television screen. This should be as far as the length of the controller cable.
- Do not play if you are tired or have not had much sleep.
- Make sure that the room in which you are playing has all the lights on and is well lit.
- Stop playing video games for at least ten to twenty minutes per hour. This will rest your eyes, neck, arms and fingers so that you can continue comfortably playing the game in the future.

OPERATING PRECAUTIONS

To prevent personal injury, property damage or malfunction:

- Before removing disc, be sure it has stopped spinning.
- The Sega Dreamcast GD-ROM disc is intended for use exclusively on the Sega Dreamcast video game system. Do not use this disc in anything other than a Sega Dreamcast console, especially not in a CD player.
- Do not allow fingerprints or dirt on either side of the disc.
- Avoid bending the disc. Do not touch, smudge or scratch its surface.
- Do not modify or enlarge the center hole of the disc or use a disc that is cracked, modified or repaired with adhesive tape.
- Do not write on or apply anything to either side of the disc.
- Store the disc in its original case and do not expose it to high temperature and humidity.
- Do not leave the disc in direct sunlight or near a radiator or other source of heat.
- Use lens cleaner and a soft dry cloth to clean disc, wiping gently from the center to the edge. Never use chemicals such as benzene and paint thinner to clean disc.

PROJECTION TELEVISION WARNING

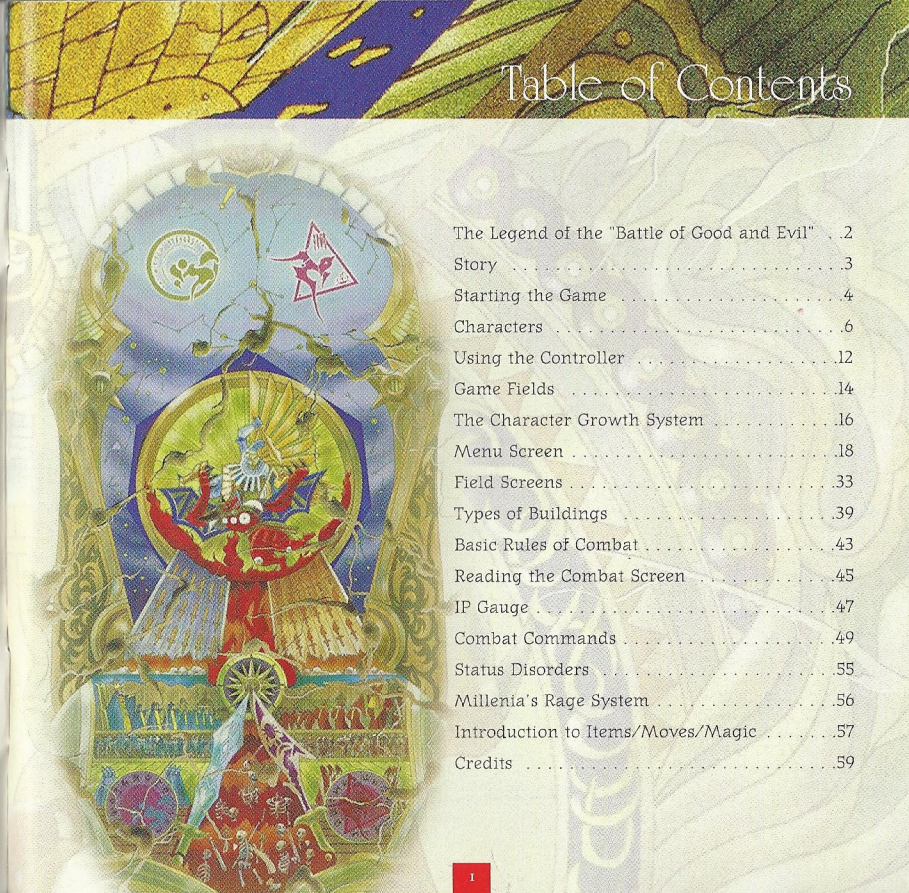
Still pictures or images may cause permanent picture tube damage or mark the phosphor of the CRT. Avoid repeated or extended use of video games on large-screen projection televisions.

SEGA DREAMCAST VIDEO GAME USE

This GD-ROM can only be used with the Sega Dreamcast video game system. Do not attempt to play this GD-ROM on any other CD player; doing so may damage the headphones and/or speakers. This game is licensed for home play on the Sega Dreamcast video game system only. Unauthorized copying, reproduction, rental, public performance of this game is a violation of applicable laws. The characters and events portrayed in this game are purely fictional. Any similarity to other persons, living or dead, is purely coincidental.

Table of Contents

The Legend of the "Battle of Good and Evil" . . .	2
Story	3
Starting the Game	4
Characters	6
Using the Controller	12
Game Fields	14
The Character Growth System	16
Menu Screen	18
Field Screens	33
Types of Buildings	39
Basic Rules of Combat	43
Reading the Combat Screen	45
IP Gauge	47
Combat Commands	49
Status Disorders	55
Millenia's Rage System	56
Introduction to Items/Moves/Magic	57
Credits	59



The Legend of the "Battle of Good and Evil"

When the world was still young and yawned at every dawn's waking, Granas, the God of Light, came. All was bathed in the holy light of Heaven. Thus, those were the days of marvels.



Yet, there were those who sought the power to resist Granas, they found power in Valmar, the God of Darkness. Power to release the energy bound up in life. Power to unmake the world.



Thus, in those days, they made war.

The fighting continued endlessly, until the Sword of Granas pierced the infinite darkness of Valmar. The mighty blow from Granas not only smashed Valmar to pieces, but also carved several ugly scars in the very surface of the planet.



These are the Granacliffs that survive even to the present; scars in the land.

The reason why we call this earth the "Cursed Land."



Ryudo is a young Geohound, working odd jobs with his companion Skye. Known for his ability to do just about ANY task, he quickly built a reputation as an efficient workhorse. Willing to do what no one else wished to.

Bouncing from job to job in order to keep the gold flowing in, Ryudo accepts, albeit grudgingly, a job involving the Church of Granas, in the village of Carbo.

Once in Carbo, a beautiful voice carries on the wind, singing hymns to Granas. Intrigued, Ryudo enters the nearby church and finds a Songstress, Elena, practicing hard for an upcoming ceremony.

It is from here that Ryudo accepts his role, bodyguard to the Songstress Elena.

And so two strangers head out on what seems to be a simple assignment...

Starting the Game

Sega Dreamcast™ Hardware Unit

Insert the Grandia™ II disc into the Sega Dreamcast™ game console and turn the power ON. From the title screen, press the Start Button to start the game. If you have any saved games, the start menu will allow you to select either "New Game" or "Load Game."

This is a one-player game. Connect the controllers and other compatible peripherals to the controller ports of the Sega Dreamcast™ console before turning the power on. To return to the title screen at any point during game-play, simultaneously press and hold the A, B, X, Y and Start Buttons. This will cause the Sega Dreamcast™ to soft-reset and display the title screen.

• Correct operation is not guaranteed if incompatible controllers are used.

If you remove the active controller after starting the game it must be re-inserted in the SAME controller port from which it was removed, before the game will resume.

SEGA DREAMCAST HARDWARE UNIT



Starting a New Game

If you want to play the game from the beginning, select "New Game" and press enter (A Button). The opening movie will begin, and when it ends, the main game will start (you cannot skip the opening movie).

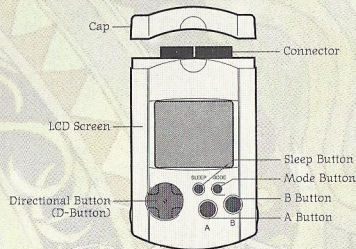


Loading a Saved Game

If a saved game is present on a memory card (Visual Memory Unit, sold separately) then select "Load Game" and press enter. Use the L/R Triggers to select the expansion socket where the memory card is inserted, select the saved game you wish to load, then press enter. Your adventure will continue from its previously saved point.

For more details on saving games, see P. 36, "Save Game."

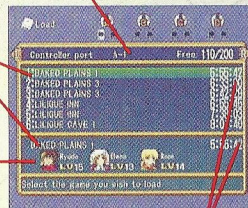
SEGA DREAMCAST VISUAL MEMORY UNIT (VMU)



Expansion sockets

Saved location

Party members



Play time

While saving or loading your game, never turn OFF the Sega Dreamcast power, remove the memory card or disconnect the controller.

Ending Play

Since you can't resume your game unless you save it first, be sure to save before ending play. When you want to end play, press the OPEN Button on the Sega Dreamcast™ console. After the disc stops spinning, remove the disc. Close the disc door and press the POWER Button to turn the power off.

Characters



Ryudo

Age: 17

Ryudo makes his living as a Geohound, bouncing from job to job, completing them regardless of moral judgement. Ever since he was a child, he has taken his training seriously and now even his colleagues recognize his superior skills with the sword.

Characterized as being cynical and pessimistic, Ryudo pushes forward, intent on getting the job at hand done. Ryudo loves to pick on his traveling companion, Skye. Although they sound harsh to one another at times, Skye is perhaps the only one who truly understands Ryudo.

• Weapon: Sword



Skye

Age: ~40

Skye is Ryudo's most reliable partner and friend. Upon meeting Ryudo two years prior, he immediately took an interest in the closed-hearted Ryudo and thus began to journey with him. Acting as Ryudo's sole confidant, Skye remains the only one to which Ryudo can share his life experience and deepest feelings with. Ryudo's indifference brings out the paternal side of Skye, who

always seeks to refine Ryudo's often harsh tone of voice.

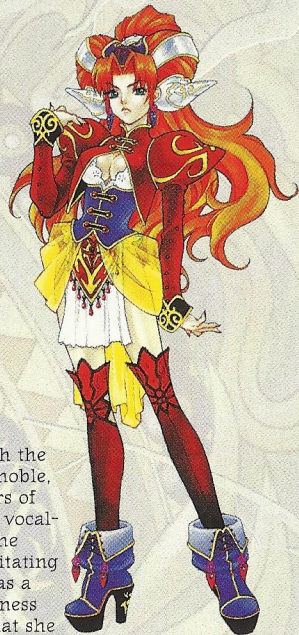


Millenia

Age: ?

Millenia is somewhat of a mystery. Capricious and impatient, Millenia cannot stand indecisiveness and is quick to pout when things do not go her way, and often-times, goes wild without a whit of concern for the lives of others. However, beneath the uninhibited exterior lies a sensitive girl.

• Weapon: Bow



Elena

Age: 17

Elena is a "Granas Songstress." Although the name Songstress may sound high and noble, she is really just an acolyte in the Sisters of Granas - who happens to be a talented vocalist. Her caring disposition spills into the party, often inconveniencing and irritating Ryudo. A lover of song since she was a child, Elena hopes to banish Darkness from the hearts of everyone, so that she may restore the Light.

• Weapon: Staff





Roan

Age: 13

Roan is a boy, traveling from home in his quest for a lost family treasure. His silky blond hair and oddly adult language endears him to many travelers and passers-by. Seemingly well-bred, with perfect table manners, Roan is clearly the bright optimism to Ryudo's festering cynicism.

• Weapon: Knife



Tio

Age: ? (but appears to be a teenager)

An automaton produced during the Battle of Good and Evil, Tio looks human, but does not possess emotion or feelings – and can do nothing but carry out the orders she has been given. When treated as a human, Tio often becomes confused and seeks direction from others.

• Weapon: Rings



Melfice

Age: 22

Elegant, yet peculiar, Melfice is a product of his own ingenuity. Talented beyond all others, Melfice's genius leaves nothing but cruel and inhuman results. Graceful with his weapon, Melfice quickly cuts his enemies down. Bringer of ruination, chaos and corruption, he is said to bring a terrible curse to man and land alike by merely passing through.



Mareg

Age: late 30's

A giant beast-man, Mareg is on a personal quest to rid the world of Melfice, Demon-man of Ruination, after Melfice attacked and destroyed Mareg's home village. He is a hunter, at home in nature, who walks across fields and mountains, silently, ever intent on his prey. He bases his actions not on theory or logic, but on the natural flow of life. While physically intimidating, Mareg is actually quite kind-hearted and gentle.

• Weapon: Axe





Zera Innocentius

Age: 58

His Holiness, Zera Innocentius, is the Pope of the Church of Granas. As the central figure in a world-wide religion, Zera is quite well known throughout the land. Zera continues to pray for the happiness and prosperity of mankind, and also preaches about the second coming of Lord Granas. Anyone who meets him is said to be touched by his kind and benevolent heart.

Recent reports of calamities weigh heavy on him.



Selene

Age: 23

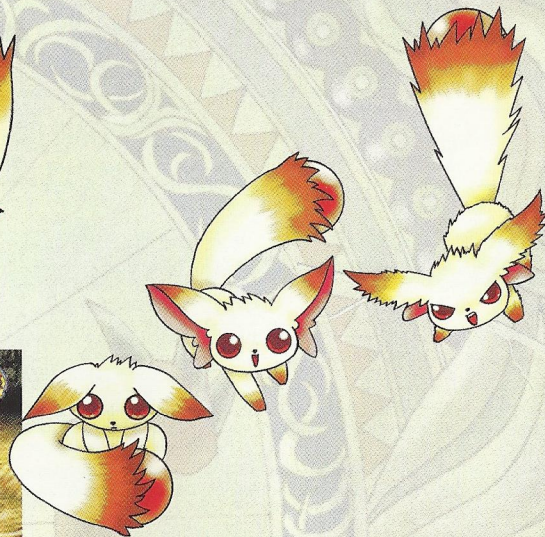
As the High Priestess of the Granas Cathedral, many people are said to be taken by her noble and almost ethereal appearance. Known for her zeal, Selene constantly seeks to grow herself in the Light of Granas. In addition to her affectionate expression, she also is known to be quite a strict inquisitor of heretics. Accompanied by the Cathedral Knights, a battalion under her command, she travels to various lands to purify the world of

Darkness.



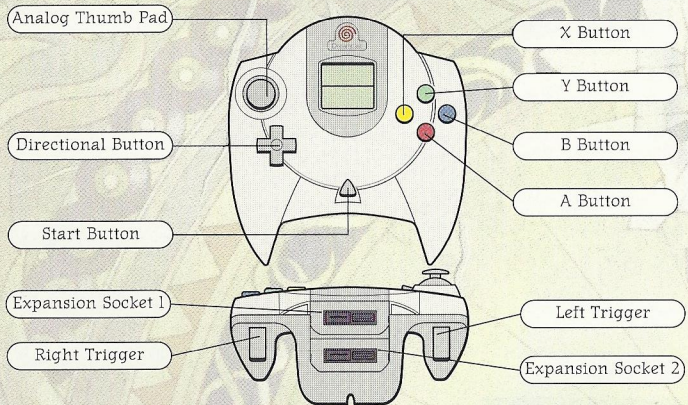
Carro

Known to live in underground passages and caverns, their distinctive tails can glow to light up darkened dungeons. Other than their affinity to dark places, not much else is known about these animals, but they have been known to help travelers through darkened caves.



Using the Controller

Sega Dreamcast™ Controller



WARNING: Never touch the Analog Thumb Pad or Triggers L/R while turning the Sega Dreamcast power ON. Doing so may disrupt the controller initialization procedure and result in malfunction.

If the Analog Thumb Pad or Triggers L/R are accidentally moved while turning the Sega Dreamcast power ON, immediately turn the power OFF and then ON again making sure not to touch the controller.

Field Screen

Analog Thumb Pad	Move the character [walk/run]
Directional Buttons	Move the character [walk]
Directional Buttons + B Button	Move the character [run] (In Config, you can toggle between run/walk.)
A Button	Investigate, talk, execute various commands
Y Button	Change the destination for the compass
L/R Triggers	Rotate the camera angle (In Config, you can toggle the direction of rotation.)
Start Button	Switch to the Menu Screen

• The X Button is not used on the Field Screen.

Menu Screen/Combat Screen

Analog Thumb Pad/ Directional Buttons	Select various commands, characters and items
A Button	Enter Button for commands, etc.
B Button	Cancel Button for commands, etc.
	Combat Screen Cancel AI combat
X Button	Menu Screen Switch between pages in the item window
	Combat Screen Combat command input: Entire screen displayed while pressed When party AI is in effect: Change viewpoint
Y Button	Menu Screen Switch between pages in the item window
	Combat Screen Turns party AI (Play Fair) ON/OFF
L/R Triggers	Switches among Moves/Magic, types of items

• The Start Button is not used on the Menu Screen/Combat Screen.

Game Fields

The connections between the various game fields are described briefly below. Players may explore by navigating through town and dungeon fields. If you enter a building inside a town, you will enter an indoor field. If you come into contact with an enemy in a dungeon field, the combat screen will appear.

Town Fields

Town fields are located in areas where people live. You should actively explore and talk to people to gather information. When you go inside a building, the screen switches to an indoor field. When you leave the town field and go outside, you will see an area map. You may also encounter dungeon fields inside towns.

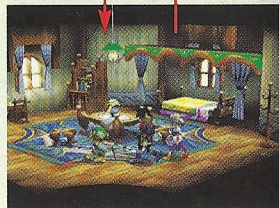


Go into a building

Go out of a building

Indoor Fields

When you enter a building located inside a town field, the screen will switch to an indoor field. Indoor fields have fixed camera angles; you cannot use the L/R Triggers to change them. If you see the name of another location when you move near a door or opening, you may enter that location from there.



Area Maps



Area maps display the locations you have already visited, allowing you to pick a region and move there. You can move to any region on the area map displayed with white letters. Move the feather cursor to the region you wish to visit, then press enter to display the screen for that region.

**Note that you can select different regions as the scenario proceeds.*

Dungeon Fields



Contact enemy

End of combat

Caverns, mountain roads, and other regions where monsters roam are known as dungeon fields. If you encounter a monster, a combat scene appears and combat will begin. Depending upon the location, there may be several maps of dungeon fields connected to each other. Towers and caverns, for example, consist of multiple levels, so make sure you use the compass to keep your way.

Combat Scenes

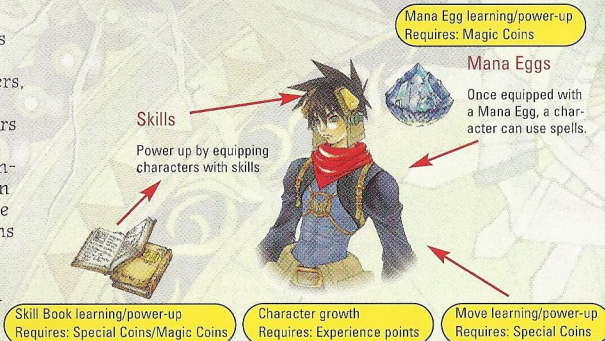


When you encounter an enemy, a combat scene will appear. If you defeat all the enemies or make a successful escape, you'll return to the previous dungeon field. If all members of your party fall in combat, your game is over and the title screen will appear.

The Character Growth System

The Four Elements of Growth

There are four elements of growth that offer power-ups for characters, moves, spells and the like. Basic growth occurs when a character ascends in level by gaining experience points in combat. In addition, the player can allocate coins earned in combat to improve a character's moves, magic and skill.



What You Earn by Defeating Enemies

Your party earns the five following types of bonuses when they defeat enemies in combat. Experience points, special coins and magic coins are required for character growth.

Experience points (EXP)

Experience points are given to each character individually. When a character gains enough experience points, they will ascend in level.

Special Coins (SC)

The party collectively earns SC upon victory in combat. SC are used to learn and power-up moves and skills.

Magic Coins (MC)

The party collectively earns MC upon victory in combat. The MC are used to learn or power-up Mana Egg magic and skills.

Gold (G)

The party collectively earns gold pieces upon victory in combat. The gold is used to buy items at general stores.

Character Growth

When a character's experience points earned in combat reach a certain value, the character goes up a level. His or her HP, MP and SP values also increase.

Mana Egg Growth

Magic coins earned in combat can be used to learn or power-up the spells in your Mana Eggs. Whether you power-up one spell you like or learn a broad range of different spells, it's up to you to decide how to allocate your magic coins.



Items

Items are obtained from defeated enemies. Some items are valuable and can't be found in general stores.

Move Growth

Special coins earned in combat can be used to learn or power-up each character's unique moves. Like magic, the order moves are learned in is up to you. Some moves can't be learned until specific events have occurred.

Skill Book Growth

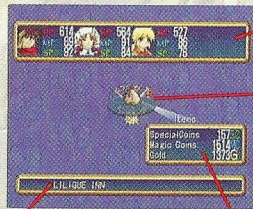
Special and magic coins earned in combat can be used to learn or power-up the skills written into Skill Books. You can learn skills to enhance a character's strengths and/or make up for weaknesses.



Menu Screen (Config, Items)

Menu Screen

Pressing the Start Button on any field screen will display the menu screen. On the menu screen, you can make various preparations for your adventures. Select the command you want and press enter.



Character window

Lists the current values of each character's HP, MP and SP.

HP: Hit Points
MP: Magic Points
SP: Special Points

Menu commands

Select a command and press enter to switch to the various screens. For details about commands, see the following pages:



Items (P. 19)



Equip (P. 20)



Status (P. 22)



Move/Magic (P. 21)



Power Up (P. 25)



Skill-Equip (P. 31)



Config (P. 18)



Set AI (P. 32)

Place name

Lists the name of your current location.

Coins and gold

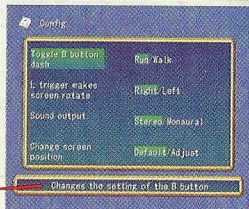
Lists any special coins, magic coins and gold pieces earned.

Config

In Config, you can change the following game settings. After you have finished selecting and changing the settings, press the B Button to return to the menu screen.

Settings:

- Change the setting of the B Button
- Direction of rotation using the L Trigger
- Sound output
- Screen position



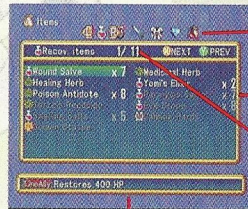
Explanation

Gives an explanation of the selected setting.

Items



The item screen allows you to use the various items you are carrying. Use the L/R Triggers to select the type of item and press enter to use it. Depending upon what item you choose, another screen will display and allow you to select a target character for the item. Use the X/Y Buttons to move through the pages of the item screen. Items with grayed-out names cannot be used.



Types of items

The types of items are indicated by icons.

Number carried

Displays the quantity of items you are carrying. You can carry up to 99 of each item.

Number of types of items

Displays the total number of items of a specific type.

Select a usable item and press the A Button



Item Type Icons



Recovery items



Attack items



Weapons



Armor



Accessories



Valuables

Menu Screen (Equip, Move/Magic)



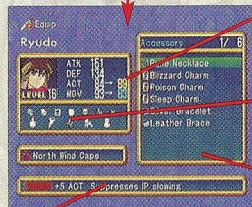
Equip

Use the Equip command to equip characters with weapons, accessories, Mana Eggs and other items you are carrying. You can also change a character's current equipment. First, select the character you want to equip and press enter. Next, select the type of equipment you want to change, press enter, then select the new piece of equipment. To select equipment being worn by other characters, you must first remove the equipment and then use the Equip command. To remove equipment, select "Remove" on the equipment selection screen, select the piece of equipment you wish to remove, then press enter.



Select the type of equipment to change and press the A Button.

Type of equipment
Items currently being worn appear underneath the equipment types. If an item is blank, the character is not wearing that type of equipment.



Changes in combat parameters
This indicates how a selected item changes a character's parameters. Yellow numbers indicate a parameter increase. Blue numbers indicate a parameter decrease.

Special effects of the selected item
Any special effects of the selected item are indicated here. For details, see P. 24, "Resistance Icons."

Equippable items
Among all the items a character is carrying, only the items they can be equipped with will display here.

Comments
Describes the powers of the selected items.



Move/Magic

Use the Move/Magic command to view moves and to use magic. Selecting a character and pressing enter will display a window containing the moves and magic spells a character currently knows. Only spells listed in white can be used. Select the spell and press enter to use it. Depending upon the spell, a screen for selecting a target character may appear.



Select the magic spell to use and press the A Button

Moves/Magic
Displays the character's moves, as well as magic spells in the character's Mana Egg. If a character is not equipped with a Mana Egg, only moves are listed.



Name of move/magic spell

SP/MP consumed
Displays the number of SP/MP consumed by the move/magic spell.

Level
The level of the move/magic spell is indicated by the number of ★ symbols. The more ★ symbols, the faster it can ACT and the more power it has. When the level reaches the highest level of 5, "★MAX" appears.

Level-up coins
Displays the number of special coins or magic coins required to raise the move/magic spell to the next level. Green numbers indicate special coins while blue numbers indicate magic coins.

Comments
Gives a description of the selected move/magic spell's effects.

Menu Screen (Status)



Status

Select the character and press enter to check the character's status. This displays detailed information about their parameters and equipment.

Current HP/Maximum HP

Current MP/Maximum MP

Current SP/Maximum SP

Current level

Current status

Displays icons indicating status disorders, if any. "GOOD" indicates there are no status disorders.

Basic parameters

Current experience points

Next level

Lists the number of experience points required to reach the next level.

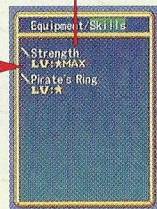


Equipment

Combat parameters

Resistance icons
Indicates the resistance and attributes granted by equipment.

Equipped skills



Use the left/right Analog Thumb Pad or Directional Buttons to toggle this window.

• Basic parameters

STR Strength. Indicates the character's attack strength.

VIT Vitality. Indicates the character's defensive strength.

AGI Agility. Indicates how quickly the character's IP Gauge advances in combat.

SPD Speed. Indicates movement speed and movement distance in combat.

MAG Magic ability. Indicates the character's magical attack ability.

MEN Mental ability. Indicates the character's magical defense ability.

• Combat parameters

ATK Attack value. This value is the basic "STR" parameter plus the added effects from skills and equipped items. Attack value affects the amount of damage inflicted on an enemy.

DEF Defense value. This value is the basic "VIT" parameter plus the added effects from skills and equipped items. Defense value affects the amount of reduced damage from enemy attacks.

ACT Action value. This value is the basic "AGI" parameter plus the added effects from skills and equipped items. Action value affects how fast the IP Gauge moves.

MOV Movement value. This value is the basic "SPD" parameter plus the added effects from skills and equipped items. Movement value affects movement speed and movement distance in combat.

• Resistance icons

A status disorder icon displayed in color indicates immunity to that status disorder. An attribute icon displayed in color indicates resistance to that attribute, and the number indicates the resistance level.

Poison Sleep Paralysis Confusion Plague Magic block Move block



Fire Wind Earth Lightning Blizzard



Power Up

The Power Up command lets you use special coins/magic coins earned in combat to learn and power-up moves, Mana Egg spells, and skills from Skill Books. Use the L/R Triggers to select a learn/power up item, select a Mana Egg or Skill Book and press enter.

The special coins/magic coins earned in combat can be used to learn/power-up moves, magic spells and skills.

Special coins
(SC)

Magic coins
(MC)

Character growth

Mana Egg growth

Skill Book growth



Learn Moves



Learn Magic



Learn Skills



Details on P. 26



Details on P. 27



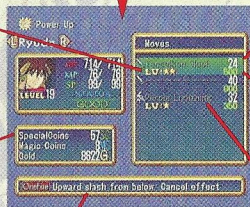
Details on P. 29

About Learning Moves



Each character possesses unique special attacks known as "moves." In order to use moves, the character must first learn them using special coins. First, select the character to learn (or power-up) the move and press enter. Then select the move to be learned (or powered-up) and press enter. Some moves can't be learned unless specific events in the adventure have occurred.

Select the character and press the A Button



Move level

The level of the move is indicated by the number of ★ symbols. The more ★ symbols, the faster it can ACT and the more power it has. When the level reaches the highest level of 5, "★MAX" appears.

Special coins

List the current number of special coins available. If the number here is less than the number of special coins required, then learning or powering-up isn't possible.

Comments

Gives a description of the selected move's effects.

SP consumed

Lists the number of SP consumed by using the move.

Special coins required

Lists the number of special coins required to learn or power-up the move.

Name of move

Lists the name of the move. Moves that haven't been learned yet to are indicated by "-----". Only moves listed in white can be learned or powered-up.



About Learning Magic



A character equipped with a Mana Egg is able to learn and use the magic spells within it. Both individual spells and Mana Eggs have levels, and the level of the Mana Egg itself can be raised by upping the levels of its magic spells. When the Mana Egg's level increases, it gains more spells to be learned.

Name of the Mana Egg

Mana Egg level

Indicates the Mana Egg's level (the sum of the levels of its spells). As its level increases, the Mana Egg receives additional spells to be learned.

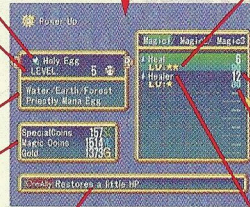
Mana Egg comments

Lists the characteristics of the selected Mana Egg.

Magic coins

Indicates the current number of coins available. If the number of coins is less than the number of magic coins required, then learning or powering-up the spell isn't possible.

Select the Mana Egg and press the A Button



Magic level

The level of the magic spell is indicated by the number of ★ symbols. The more ★ symbols, the higher its level, the faster it can ACT and the more power it has. "★MAX" means the spell has reached its highest level of 5.

MP consumed

Indicates the number of MP consumed by using the spell.

Magic coins required

Indicates the number of magic coins required to learn or power-up the spell.

Name of spell

This is the name of the magic spell. Spells that have yet to be learned are indicated by "-----". Only spells listed in white can be learned or powered-up.

Comments

Provides a description of the selected spell's effects. "???????" means the level of the Mana Egg is still too low for the spell to be learned.

Learning Magic

Select the Mana Egg containing the magic spell you want to learn and press enter. You cannot learn that spell unless you possess the necessary number of magic coins (MC).

Powering-Up Magic

Select the Mana Egg containing the magic spell you want to power-up and press enter. You cannot power-up that spell unless you possess the necessary number of magic coins (MC). The higher a spell's level, the faster it can ACT. The maximum level for a magic spell is 5.

Types of Mana Eggs

Name of Mana Egg	Description
Holy Egg	Water/Earth/Forest Priestly Mana Egg
Chaos Egg	Fire/Wind/Lightning Demonic Mana Egg
Mist Egg	Wind/Water/Blizzard Airy Mana Egg
Gravity Egg	Fire/Earth/Explosion Earthy Mana Egg

• This is not a complete list of Mana Eggs. Look for others!



About Learning Skills



Skill Books contain various skills that can be equipped to give a character additional powers. Like Mana Eggs, Skill Books also have levels. As new skills are learned and skill levels are increased, the level of the Skill Book will also increase. When the Skill Book reaches a certain level, it receives additional skills that can be learned.

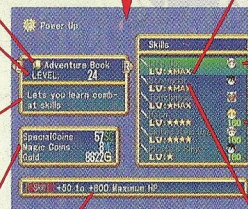
Name of the Skill Book

Skill Book level
Indicates the Skill Book's level (the sum of the levels of its skills). As this level increases, the Skill Book receives additional skills to be learned.

Skill Book comments
Lists the characteristics of the selected Skill Book.

Special coins/magic coins

Select the Skill Book and press the A Button



Comments
Provides a description of the selected skill's effects. "???????" means the level of the Skill Book is still too low for the skill to be learned.

Skill level

The level of the skill is indicated by the number of ★ symbols. The more ★ symbols, the higher its level and the greater its power. "★MAX" means the skill has reached its highest level of 5.

Equipped character
Displays an icon of the character equipped with the skill.

Special/magic coins required
Indicates the number of special coins/magic coins required to learn or power-up the skill. Green numbers indicate special coins while blue numbers indicate magic coins.

Name of skill
This is the name of the skill. Skills that haven't been learned yet are indicated by "-----". Only skills listed in white can be learned or powered-up.

Learning Skills

Select the Skill Book containing the skill you want to learn and press enter. You cannot learn that skill unless you possess the necessary number of magic coins (MC) or special coins (SC).

Powering-Up Skills

Select the Skill Book containing the skill you want to power-up and press enter. You cannot power-up that skill unless you possess the necessary number of magic coins (MC) or special coins (SC). A skill becomes more powerful as its level increases.

Types of Skill Books

Name of Skill Book	Description
Adventure Book	Lets you learn combat skills
Book of Wizards	Lets you learn wizardry skills
Book of Warriors	Lets you learn warrior skills
Book of Priests	Lets you learn priestly skills

• This is not a complete list of all Skill Books. Look for others!



SkillEquip

SkillEquip is used to equip characters with skills in the same manner as weapons, armor and other equipment. Select the character you want to equip with skills and press enter. To equip a new skill, select an empty skill entry and press enter. Switch to the Skill Book window containing the desired skill, select it and press enter.



Current skills
Skills currently equipped appear here. Select a currently equipped skill or "-----" and press enter to equip or change the selected entry.

Changes in combat parameters
Here you will see how the selected skill affects the character's parameters. The numbers are yellow when a parameter goes up or blue when a parameter goes down.

Skill to be changed
The skill to be changed appears here.

Select the entry to change or equip and press the A Button



Comments
Provides a description of the currently selected skill.

Skill Book
Displays the name of the currently selected Skill Book. Use the L/R Triggers to display other Skill Books.

Character equipped with skill
Displays an icon of the character currently equipped with the skill. Skills with an icon appearing here cannot be selected as a skill to be equipped.

Name of skill
This is the name of the skill. Skills that have yet to be learned are indicated by "-----".



Set AI

Set AI allows you to change the strategy AI commands used during combat. Select either an individual character to modify or "Party." Once the AI window appears, select your desired strategy and press enter.



Select the AI you want to change and press enter.



Current strategy

Comments
A description of the currently selected strategy appears here.

For more information see page 54.

Dreamcast™ **WARRANTY REGISTRATION**

NOTE: You may also register by phone (415) 547-4028 / fax (415) 547-4001 or on

Name _____

Address _____

City _____ State _____ Zip _____

E-Mail Address _____ Phone _____

Where did you purchase your copy of Grandia™ II?

Which gaming publications do you read?

Which gaming consoles do you own/plan to buy within the next 6 months?

Nintendo® 64 PlayStation® game console
other _____



about
If you
ny, a
appear
Begin.



Set A
an in
desire

REGISTRATION CARD

the web at www.ubisoft.com

_____ Apt. # _____

_____ Sex _____ Age _____



For

Field Screens

Town field



R Trigger rotates
counter clockwise

L Trigger rotates
clockwise

Compass

Dungeon field



Non-player Character (NPC)
Many kinds of people live in towns. Try talking to as many of them as you can to gather useful information.

Icons
On the field, you'll notice icons, treasure chests, things that can be smashed and other objects. If you see something of interest, try approaching it and pressing the A Button.



Ladder icon



Jump icon



Action icon



Treasure chest
(large)



Money box



Tutorial hat



Treasure chest
(small)



Money bag

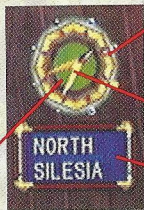


Save icon

Enemy
Enemies wander about the dungeon fields. If you encounter an enemy, a combat screen will appear and combat will begin.

Compass

The compass appears in the upper right corner of the screen in town fields and dungeon fields, and indicates the direction and distance to the destination. Press the Y Button to change the destination. The number of destinations you can choose from depends on your current location, and may change as the game unfolds.



Bezel

The number of blue dots indicates the number of destinations that can be chosen. The yellow dot indicates the current destination.

Needle

The needle points in the direction of the destination.

Destination

Lists the name of the current destination. In dungeon fields, the only possible destinations are "Forward" and "Back."

Distance to the destination
The light green circle appearing underneath the needle indicates the distance to the destination. This circle reduces as you close in on the destination and increases as you move away from it.

Destination is nearby



Destination is far away



Icons



Action Icons

These icons appear in places where you can take actions, such as moving switches or pushing objects. There are also places where you can push objects or take other actions, even though no action icon appears.



Jump Icons

These icons appear where you can jump down or across crevices, or other openings in the ground.



Ladder Icons

These icons indicate ropes or ladders which you can climb up or down.



Tutorial Hat

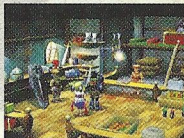
These icons identify characters in general stores who will provide you with combat tips and other hints.





Save Icons

Press the A Button while you are on one of these icons to save your game or let party members recover. Select "Recover" to restore all your party members' parameters to their maximum values. Save Icons also cure all status disorders.



Save Game

Select "Save Game" and press enter to display the save screen. On the save screen, use the L/R Triggers to select an expansion socket where a memory card is inserted, select a place to save your game and press enter. Saving your game where an older game is already saved will completely overwrite the old game.

A memory card is required to save games. Saving one game requires nine free memory blocks. You can save up to 10 games on one memory card.

Saved games



Expansion socket
The expansion socket where the currently selected memory card is inserted appears here.

Save time
The total play time elapsed when the game was saved appears here.

Current location

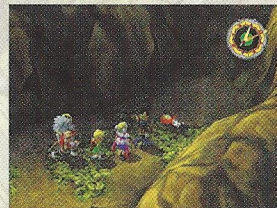
Current party

Current play time
The total play time from the start of your adventure to the present appears here.

• While saving your game, never turn OFF the Sega Dreamcast™ power, remove the memory card or disconnect the controller.

Found Objects

If you find money, treasure chests or other objects in dungeon fields, press the A Button to pick them up. Standard treasure chests contain one item, while big treasure chests contain three items.



Town Characters

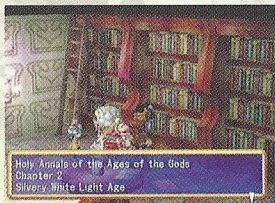
Try talking to town characters to gather information and continue your adventure. A conversation with a character isn't necessarily over after talking with them only once. Try talking to the same character again and again if the conversation seems unfinished, or if the character is particularly interesting.



Other

Things that Can be Investigated

If you find something interesting in a town or dungeon, move up to it and try pressing the A Button. You might be able to investigate it and gain some information.



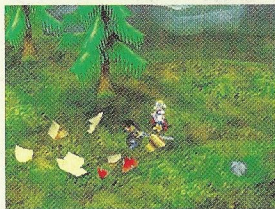
Dangerous Traps

There are many traps set on the dungeon fields. If you trip one, the party may lose HP or suffer status disorders.



Things that Can be Smashed

Certain objects in dungeon fields, such as giant mushrooms or boulders, can be smashed. You can try to smash objects by pressing the A Button.



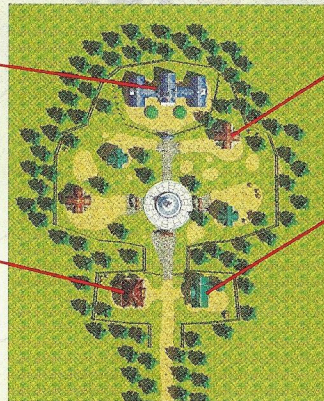
You will find many buildings in town, such as Inns and General Stores. Here we will describe some of the buildings in Carbo Village, where Ryudo will visit first.



Granas Church
Here you will find the Father and the Songstress Elena. The Father has asked Ryudo to do a job for him.



House
There are several houses in the village. If the door opens, you can go inside and talk to the residents.



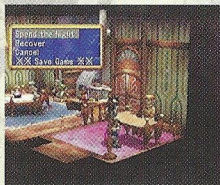
Inn
The inn is a good place to rest a body weary from adventure. Here you can completely recover all HP or MP and save your game.

General Store
At the general store you can buy and sell weapons, armor and other items you'll need on your adventures. Here you'll also find a character wearing a "tutorial hat" who offers combat tips.



Inns

At the inn you may rest your character or save your game. Whenever you reach any town, it's recommended to first visit the inn to restore your party's status and save your game. You can stay at the inn for free.



Spend the Night



Spending the night restores HP, MP and SP to their maximum values and cures all status disorders. Selecting "Spend the Night" and pressing enter will cue a dinner scene. From here, you may select a character you want to talk to and press enter to have a conversation; you might just find out important vital information. To end your meal, select the "Good Night" icon and press enter. You may not be able to end the meal until you have heard a particular conversation.



The "Good Night" icon

Select the "Good Night" icon and press enter to end your meal (conversation) and go to sleep. Time will elapse within the game.

Recover

This restores the HP, MP and SP to their maximum values and cures all status disorders.

Save Game

Select this item to save your game. For details, see P. 36

General Stores

Talking to the proprietor of the general store lets you buy and sell weapons, armor and other items you'll need on your adventure. Also in the general store is a character (wearing a "tutorial hat") who'll patiently explain what you need to know about combat. Try talking to him if you have a question.



Buy

To buy items at a general store, select the item type and press enter, then select the item to buy and press enter. This will display the Buy command. When selecting equipment, arrows will indicate the item's effects on the character's parameters. Equipment items can be equipped immediately.

The diagram shows the "Buy" command screen with various annotations:

- Type of items for sale:** Points to the "Weapons" and "Armor" categories.
- Cash on hand:** Points to the "Gold 2000G" display.
- Items for sale:** Points to the list of items for sale, including "Sword of the Brave", "Shield of the Brave", "Flying Fish Bow", "Sword of the Brave", "Shield of the Brave", "S. Master's Staff", and "S. Master's Staff".
- Price:** Points to the "1000G" price for the "S. Master's Staff".
- Select Equip and press the A Button:** Points to the "Equip" button.
- Number carried:** Points to the "1000G" price for the "S. Master's Staff".
- Item description:** Points to the "S. Master's Staff" description.
- Parameter change icons:** Points to the "▲" and "▼" icons.
- Changes in combat parameters:** Points to the "ATK", "DEF", "ACT", and "MOV" parameters.

Item	Price
Weapons	
Armor	
Sword of the Brave	1000G
Shield of the Brave	1000G
Flying Fish Bow	1000G
Sword of the Brave	1000G
Shield of the Brave	1000G
S. Master's Staff	1000G
S. Master's Staff	1000G

Parameter change icons
These icons indicate an item's effect on parameters. An ▲ icon indicates an increased parameter, while a ▼ icon indicates a decreased parameter. The change icons, from left to right, indicate the ATK, DEF, ACT and MOV parameters.

Changes in combat parameters
This displays the item's effects on combat parameters. Yellow numbers indicate an increased parameter; blue numbers indicate a decreased parameter.

Sell

To sell items you are carrying, select the item type and press enter, then select the item to sell and press enter. This will display the Sell command. Worn items must be removed before they are sold, and some items cannot be sold at all.

Type of items carried

Items carried

Sell command
In addition to selling items one at a time, you may also use a command to sell multiple items at once.



Cash on hand

Number carried

Price

Item description
Gives a description of the selected item including its strength, special effects and price.

Tutorials

When you talk to the character in the corner of the store wearing a "tutorial hat," he will give you information and combat tips while walking you through simulated battle. At the start of your adventure he will provide only simple tips, but then offer more advanced help as your adventure proceeds.



Dungeon Field Screen



Encountering an enemy in a dungeon field will trigger the combat screen to appear and initiate the battle. During combat, you must decide your character's actions each turn until you defeat the enemy. Combat occurs in real time except during the execution of moves, spells and special enemy attacks and while the characters await command input. Combat ends when all enemies are defeated, or when the combat command "Escape" is successful. Upon victory, the combat results screen will appear, then you will return to the dungeon field where you originally encountered the enemy. If all party characters fall in combat, the game is over.

Contact with enemy

Start of combat
Fighting against the monsters starts. C'mon, let's fight hard!



All party characters fall in combat

Game Over
(Return to title screen)

End of combat

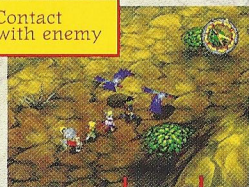
Combat results screen appears
The experience points, coins and gold earned in combat are added. The combat scene ends.



Return to dungeon field screen

How You Contact the Enemy Makes A Difference

Contact with enemy



How you encounter the enemy on the dungeon field screen determines who will have the advantage at the start of combat. If you encounter the monster party from behind, you have the element of surprise and can attack first. However, if the enemy encounters you from behind, you will be surprised and attacked first.

Contact not made in one of the states below

Combat starts normally

Player party encounters monster party from behind

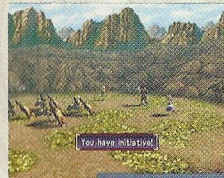
Monster party encounters player party from behind

Combat starts with a surprise attack

Combat starts with player party surprised

Combat starts with your party surrounding the enemy and launching a surprise attack.

Combat starts with the enemy surrounding your party and launching a surprise attack.



HP: Hit Points
MP: Magic Points
SP: Special Points

Character window

Numbers next to each character icon display current HP values, while the colored bar gauges display HP, MP and SP status.



Combat status window
Displays details on the currently selected character. For specifics, see P. 46.

IP Gauge
The IP (Initiative Point) Gauge displays the order in which party characters and monsters take action. For details of the IP Gauge, see P. 47.

Combat commands

These commands appear when the AI strategy in combat is set to "Manual." For details of the various commands, see P. 49.



Combo (P. 49)



Critical (P. 49)



Moves/Magic (P. 50)



Items (P. 51)



Defend (P. 51)



Escape (P. 52)



Evade (P. 52)



AI (P. 53)

IP (Initiative Point) Gauge

Meaning of Various Marker Displays

Here are the meanings of the various markers displayed around each character:


COUNTER Indicates that counter damage has occurred.

CANCEL An action has been canceled.

SWAY A character has avoided an enemy attack.

MISS An attack has missed due to the enemy dodging etc.

2 Hits Displays the number of times a character or enemy has been hit.

 The distance between the attacker and the intended target is either obstructed or too great.

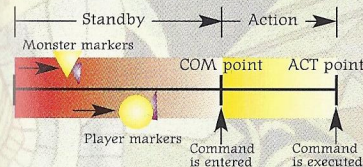
Combat Status Window

This window displays each character's status, action status, combat parameters and other information. When a monster is selected, Treasure icons may appear when the monster is carrying valuable items.



Treasure icons
These indicate the chances that a monster will drop a good item. The greater the number of icons, the better the chances are that a monster will drop an item.

Enemy action
This indicates what kind of action the monster is taking and which character is the target of its attack.



The IP Gauge determines the order in which each character acts. Each character's marker travels from left to right along the Gauge, and when a character marker reaches the COM point, you may enter your command. The action will then be executed once the character marker reaches the ACT point located at the right end of the IP Gauge.

1

When a player marker reaches the COM point on the IP Gauge, the motions of all characters are halted and the command entry field awaits your input. Once you enter a command, the marker begins moving again.



2

When a player marker passes the COM point on the IP Gauge, that character prepares to carry out the entered command. When the ACT point is reached, the character begins his/her action and the entered command is executed.



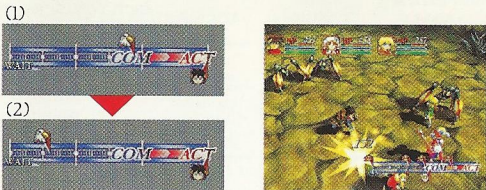
3

Once his/her action is complete, the player marker moves back to the left end of the IP Gauge. The marker then begins moving towards the command entry point again, and this sequence is repeated as long as combat continues.



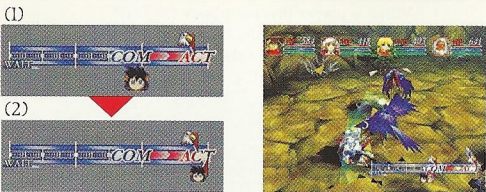
Use a Critical Attack to Move the Monster Marker to the Left

If you land a critical attack on an enemy before they can enter attack mode (1), the enemy's marker will be pushed back to the left (2), delaying the enemy attack. If you can manage to land consecutive critical attacks, you might even be able to defeat the enemy without being attacked.



Differences in IP Movement Speed from the COM Point to the ACT Point

Even if the enemy is just about to execute an attack (1), you can enter a command with a high IP Gauge movement speed (such as Defend), and it will execute instantaneously (2). You still might be able to defend the attack and reduce damage.



Combo



Select Combo for combination attacks. Select the Combo command and press enter, then select the enemy to attack and press enter.

About Counter

If your attacks hit while the enemy is in an attack pose, a Counter may occur, resulting in greater damage.

Critical



This is a powerful single attack. Select the Critical command and press enter, then select the enemy to attack and press enter. Although a Critical won't inflict as much damage as a Combo, it can move the enemy's IP Gauge marker back to the left. A Critical requires a large attack motion that may leave you vulnerable to Counter damage, so be careful timing your attack.

About Cancel

If a Critical (or other attack which has a Cancel effect) hits while the enemy is preparing to act (between the COM and ACT points), the enemy's marker may be pushed back before the COM point. Scoring a cancel can be useful for avoiding those particularly powerful enemy attacks.



Moves/Magic

This command lets you use the moves and magic spells contained in a character's Mana Egg. Use the L/R Triggers to switch among the Moves/Magic windows and select the move or magic spell you want to use, then press enter. After selecting the target and pressing enter, the character prepares to activate the move/magic spell. As the character prepares they will be surrounded by yellow or green lights, and when their marker on the IP Gauge reaches the ACT point, they will execute the move/magic spell.



Comment

Describes the selected move/magic spell and lists level, range of effect and points consumed.

Moves/magic window

If a character is equipped with a Mana Egg, magic windows will appear. Use the L/R Triggers to switch among them.

Points consumed

The points consumed by the move/magic spell appear here. If your current SP or MP value is less than this rating, you can't use the move/magic spell.

About SP Recovery

You'll recover a small amount of SP if you hit with a Combo or Critical attack, or if you are hit by an enemy attack.



Items



This command lets you use or equip a character with items being carried during combat. Select one from the Items list and press enter, then select the target and press enter. Grayed out items cannot be used in combat. Only currently equipped objects can be used as items.



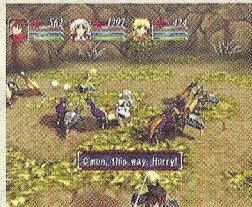
Defend



Use this command to take a defensive posture for a fixed period of time. Defend reduces damage and lessens the chance of status disorders. You'll also recover more SP than usual if you're defending while the enemy attacks.



Escape



Escape allows you to retreat from a combat scene. If your escape is successful, you will exit the combat scene but won't earn the experience points, gold and other items you'd get by defeating the enemy. Use this command if the party characters are in dire straits. You can't use the Escape command to get away from every enemy, however. Some you will have to fight and defeat in order to continue.



Evade



Evade allows you to avoid enemy attacks by moving to another place. Select from several evasion points appearing on the screen, then press enter. Evading will not let you avoid moves or magic spells able to attack regardless of distance.



AI



You can choose the AI battle settings from eight different strategies of action. Select either a party or individual strategy name and press enter to display the strategy menu, then select your strategy and press enter. Once you select "Execute," an AI battle will be executed. During battle, you can use the Y Button to turn Party AI (Play Fair) on or off. To halt an AI battle, press the B Button. When using a strategy other than Manual, you can only change the camera angle in combat when an AI strategy is being executed.

Manual (individual) AI



Name of strategy
The strategy name appears under the individual character windows during the execution of AI strategies set for individual characters. It also appears at the bottom left of the screen during the execution of Party AI.

Party AI



Combat camera angle mark
Use the X Button to change the combat camera angles. There are four to choose from.

Name of Strategy	Description
Manual	You enter all combat commands.
Go Wild	Use powerful moves and magic unsparingly.
Play Fair	Fight only with normal attacks and recovery magic.
Safety 1st	Recover frequently while fighting to prevent party characters from falling in combat.
Power Up	Use assistance magic while fighting to raise friends' powers.
Meanie	Fight while creating situations that make it difficult for the enemy to attack.
Withdraw	Use mainly Evade and Defend.
Each Own	Each party character makes actions according to their personality.

Different Combat Camera Angles



This camera angle captures the entire combat screen.



This is the standard camera angle.



This camera angle displays a close-up of a specific character. Use the L/R Triggers to switch characters.



This camera angle displays a specific character and their surrounding vicinity. Use the L/R Triggers to switch characters.

Status Disorders



Party characters and monsters may suffer status disorders when hit by special attacks. Status disorders are indicated by a mark appearing above the inflicted character's head, and the character's actions will be hindered in combat. Status disorders can be cured by using magic or items. In addition, some status disorders may wear off after combat.

List of Status Disorders



Poison
A poisoned character continuously suffers damage from poison. The effects continue after combat ends.



Sleep
Sleeping characters are unable to act until a period of time elapses or an enemy attacks them. Sleep effects wear off when combat ends.



Plague
Plague randomly induces sleep, paralysis, confusion or other status disorders. It can also decrease character parameters. Plague effects continue after combat ends.



Confusion
A confused character will not accept commands and sometimes attacks his friends. Confusion may wear off after a period of time, or when combat ends.



Magic block
The character can no longer cast spells, regardless of their MP. The effects continue after combat ends.



Paralysis
A paralyzed character cannot move his body. Paralysis may wear off after a period of time, or when combat ends.



Move block
The character can no longer use moves, regardless of their SP. The effects continue after combat ends.



Fallen
A character whose HP falls to 0 can no longer participate in combat.

Millenia's Rage System

Rage Gauge

The color changes as Millenia's mood gets worse.



If her rage explodes...



She unleashes a frenzied rage attack!

When in combat, Millenia gradually builds up rage when irritated or attacked. When she reaches her breaking point, Millenia will go berserk, using powerful moves and special magic spells at will. The player has no control over the enraged Millenia, and you can only enter commands after her rage subsides.



Introduction to Items/Moves/Magic

Items (Here are some items appearing early in the game.)

Weapons	Item	Sales Price	Effects
	Geoblade	400	+18 ATK A common Geohound's sword
	Falx	500	+22 ATK A scythe-shaped curved sword
	Shamshir	620	+26 ATK Lion's tail-shaped curved sword
	Prayer Staff	500	+22 ATK An acolyte's defensive staff
	Iron Rod	720	+30 ATK A heavy iron rod
	Crossbow	860	+35 ATK A powerful missile weapon
	Burning Bow	1440	+45 ATK Fire attribute
	Multiple Knife	650	+28 ATK A multi-function knife
	Hunter's Knife	880	+36 ATK Effective against animals

Armor	Item	Sales Price	Effects
	Cuir Bouilli	500	+12 DEF Boiled leather armor
	Leather Jacket	650	+14 DEF A cowhide jacket
	Adventure Suit	720	+16 DEF A heavy suit for adventuring
	Quilted Silk	800	+18 DEF A magical suit made of silk
	Guardian Robe	1200	+22 DEF Gives poison resistance
	Leather Armor	750	+17 DEF Tanned leather armor
	Chain Mail	950	+20 DEF Armor made of woven chains
	Climbing Hat	240	+4 DEF A hat for mountain climbing
	Traveler's Hat	300	+6 DEF Worn by travelers
	Hair Band	200	+2 DEF A band for tying hair back
	Bandana	250	+5 DEF Helps you concentrate
	Climbing Boots	200	+6 MOV +2 DEF Sturdy climbing shoes

Items	Item	Sales Price	Effects
	Medicinal Herb	10	Restores 200 HP to one character
	Wound Salve	24	Restores 400 HP to one character
	Healing Herb	50	Restores 250 HP to all friends
	Poison Antidote	14	Cures poison
	Paralysis Salve	14	Cures paralysis
	Eye Drops	14	Awakens sleeping characters
	Smelling Salts	20	Cures confusion
	Yomi's Elixir	500	Revives a fallen character

Moves/Magic Here are some of the moves/magic appearing early in the game.

Moves	Move name	User	SP consumed	Effects
	Tenseiken Slash	Ryudo	24	Upward slash from below
	Impact Bomb	Elena	25	Ball of light pounds enemy
	Arrow Shot	Millenia	25	A single surefire shot
	Golden Hammer	Roan	22	Attack with a huge hammer

Magic	Item	Sales Price	Effects
	Burn!	6	Attack enemy with fireballs
	Howl	9	Attack with tornado energy
	Runner	3	Boosts movement with a tailwind
	Shhh!	10	Blocks magic with a vacuum
	Snooze	5	Puts enemies to sleep with bubbles
	Heal	6	Restores a little HP
	Healer	12	Restores a lot of HP
	Diggin'	4	Ups defense with the power of earth
	Def-Loss	5	Drops defense with the power of earth
	WOW!	5	Ups attack power with a passionate soul
	Zap!	24	Attack by shooting ball lightning
	Stram	6	Robs strength and drops enemy defense
	Cure	4	Green power cures poison and paralysis
	Refresh	12	Natural harmony unblocks magic and moves
	Freeze!	5	Drops action with bone-chilling cold

Game Arts Credits

Program

Director of Programming: KAZUYUKI OHATA
 Lead Programmer: KAZUHIRO IRIE
 Field System Programmer: YASUSHI NOMOTO
 Demo System/
 Mini game Programmer: TOSHIKI NAGANUMA
 Battle System Programmer: NOBUO YAMUKAI
 Assistant Battle
 System Programmer: SHIGEHIRO YANBE

Graphic Artists

Director of Graphics: AKIHISA SAKO
 Character Graphics: MASAHIKO KOYAMA
 SHINGO HAYAKAWA
 TAKAYUKI HIRAMATSU
 SAYURI WARITA
 KAZUYA SUZUKI
 ISAMU IKEDA
 KOJI KATO
 EMI IMAMURA
 TAKAO FUJITA
 TAKESHI NISHIMURA
 KAZUYUKI SHIBATA

Map Graphics:

Texture Artists:

Art Directions

Art Directors:

Art Setting:

Story Board Artist:

2D Graphic Artist:

Animators:

Character Designer:

Character Profile Artists:

Monster Designers:

"Carro" Design:

Thanks:

Setting:

Coordinator:

Game Design

Director of Game Design:

Game Data:

Map Modelings:

Map Gimmick Design:

Map Data Making:

Character Demo Script:

Character Demo Production:

SUSUMU BANBA
 MASAOKI NISHIDA
 YASUKO MIYAZAKI
 YOSHIE KANEI
 HUMIE MUROI
 KAZUMI SATO
 TETSUHIRO SAITO
 MASASHI KOJIMA
 KUNIO KAZUKI
 YOHICHI ISHIKAWA
 EIJI INOUE
 JUNICHIRO SAITO
 SHINGO TAKEBA
 MASAHISA SUZUKI
 ATSUKO NISHIDA
 SADAMI MORIKAWA
 YOSHIHARU HASHIMOTO
 HIROKO KAZUI
 RURIAO46
 MAKOTO MATSUOKA
 KAZUTOYO ISHII
 OSAMU HARADA
 SHINTARO KATAOKA
 NORIYUKI OSAWA
 KAZUYUKI IWASAKI
 HIROSHI ASANO
 EITARO KASAI
 TOSHIMASA HARADA
 DAISUKE SHIMIZU
 NOBORU MIYANO
 HIROYUKI ITO
 MASAMI SAKAKURA
 MASAKI TAGUCHI
 TAKAMASA EHARA
 TAKESHI SUZUKI
 KATSUSHI YAMAGISHI
 RYOTA MOTEGI
 KANYA FUKUHARA

Map Creation Assistants: EIJI MOCHIZUKI
SHINICHI YAMAGUCHI
KAICHI HONMA
YOSHIHITO KAWANISHI

Story
Original Story: KEI SHIGEMA
YUICHI HASEGAWA
Scenario Direction: HIROAKI OKABE
Main Scenario: YUZO SUNAGA
HIDENOBU TAKAHASHI
Scenario Assistant: AKIRA KASHIWAGI

Village Character Scenario
Director: TOMOHIRO TAKEDA
Production: TAMON YAZAKI
Game Scenario: DAISUKE TAZAWA
TAKUYA OKUMURA
GON
KATSUYUKI KURIYAMA
SATOSHI KASAI
TAKASHI HINO

Supervisor:
CG Animation
CG Movie Production: XEONIX
CG Director: MASAMICHI KAWANABE
Director: MASAYUKI ITOKAZU
KENICHI IWAIDA
YUJI HIKOSAKA
TOSHIO AKASHI
(KUSABUNE)
KAZUHIRO HIGUCHI
YASUFUMI SOEJIMA
XEONIX
KAZUHIRO TAKAHASHI
YUSUKE TAKAIKE
SYOKO ISHII
NORIO TAKAGI
RIE MATSUURA

Coordinators: TOSHIO AKASHI
(KUSABUNE)
KAZUHIRO HIGUCHI
YASUFUMI SOEJIMA
XEONIX
KAZUHIRO TAKAHASHI
YUSUKE TAKAIKE
SYOKO ISHII
NORIO TAKAGI
RIE MATSUURA

CG Production: XEONIX
KAZUHIRO TAKAHASHI
YUSUKE TAKAIKE
SYOKO ISHII
NORIO TAKAGI
RIE MATSUURA

System Engineer:
CG Animation Direction:
Director: BOBU SHIRAHATA
Editor: ITSUO MIYAMOTO
Coordinator: KAZUNORI NOGUCHI

Sound
Sound Director: TAKAHIRO NISHI
Composer: NORIYUKI IWADARE
Acoustic Piano: HARUKI MINO
Flute: TAKASHI ASAH
Violin: REIKO TSUCHIYA
BUNGO FUJIWARA
(TWO FIVE)
TORU HIRABAYASHI
MAKOTO ASAI
KAORI KAWASUMI
MAKI TANIMOTO
MASANORI TAKAYAMA
AYUMI IWATA
AKANE KANEKO
SAORI MITA (TWO FIVE)

Trumpet:
Electric & Acoustic Guitar:
Vocal:
Chorus:
ATSUSHI KOBAYASHI
(SOUND INN Mixer's Crew)

Recording&Mixing Engineer: TERUO KONISHI (Griot)
Manipulator:

NOBUKO NAKAGAWA
MANABU YAMAZAKI
IKUSABUNE
HIDENORI TANAKA
JUNICHI KAMIYA
HIROHISA SUZUKI
SHIROGUMI
MASAKUNI TAIRA
HIROTAKA NAITO
SEMIN TO
MANABU KOIKE
MASAAKI TANOGUCHI
AKIKO IGE
HIDEAKI NAKAYAMA
SHIN ONO
STUDIO DEEN
BOBU SHIRAHATA
ITSUO MIYAMOTO
KAZUNORI NOGUCHI

Musician Coordinator:
Sound Producer:
Sound Designer:
YOUJI SUGIYAMA
HIROSHI HORIGUCHI
(TWO FIVE)
KENICHI KUNISHIMA
ISAO MACHIDA

Sound System Programmer:
Special Thanks:
ARI KAMIJOH
KOUJI UEDA
HISASHI MATSUMOTO
SATOSHI UESAKA
KEITARO NUMATA
KOSUKE FUKUMOTO
(ARCLIGHT)
ATSUO YOSHIZAWA
(ARCLIGHT)
JOSE ALVARES
(Portuguese Cultural
Center Tokyo)

Technical Assistant:
HIROYUKI KOYAMA
TOSHIMICHI MASUBUCHI

Localization Staff (JAPAN)

Programmers: Kazuhiro Irie
Nobuo Yamukai
Isamu Ikeda
Takahiro Nishi
Isao Machida
Yuzo Sunaga
Hiroyuki Koyama
Graphic Artists:
Sound:
Scenario Check:
Production Manager:

Original Director:
Producers:
KATSUNORI SAITO
TAKESHI MIYAJI
TOSHIIYUKI UCHIDA
YOICHI MIYAJI
Executive Producer:

UBI SOFT ENTERTAINMENT

Produced and Localized by: John Chowanec and
Arisa Furugen

Japanese Project Coordinator: Arisa Furugen

US Brand Manager: John Chowanec

International
Brand Manager: Vincent Munoz

Public Relations: Sandra Yee
Melanie Hodgson

Packaging and
Manual Design: Mari Sakai

Code Managers: Willie Wareham
Kathleen Lynch

Release Coordinator: Kumi Akatsuka (ESP)

Localization Team

Translated by: Alan Siegrist
(Siegrist Translations)
Fred Harriman
Bruce Talbot
Paul Kotta

Lead Dialogue Writer: Aaron Vanian

Dialogue Writers: Anthony Preto
Alex Jones
John Chowanec

Localization Assistants: Melanie Hodgson
Anthony Franco
Kawai Carvalho

Manual Copy Editor: Marc Fortier

Lead Tester: Eric Arsenault

Credits

Testers:

Frédéric Brown-Althot
Sébastien Rioux
Vincent Michaud
David Cherniak
Marc Lepage

Very Special Thanks To:

Kara Chowanec
Dennis Roy
Mona Hamilton
Xavier Fouilleux
Corey Fong
David Bamberger
Laurent Detoc
Jay Cohen
Wendy Robinson
Dana Gard
Kevin Lalli
Tats Myojo
Rich Kubiszweski
Sarah Ohring
Oliver Kaim puss
Jenifer Groeling
Randy Gordon
Helene Juguet
Yasmin Naboa
Austin Gavin
Paul Brenden
David Fung
Tony Laborie
Riz & Lars

Audio Production

Recorded at: ScreenMusic Studios
Voice Director: Kris Zimmerman
Mixing Technician: Zoli Osaze
Production Assistant: Cristina Cornejo
Chief Engineer: Paul Andris
Editors: Jeremy Pitts
Terry Reiff

Cast:

Ryudo: Cam Clarke
Elena: Jennifer Hale
Millenia: Jodi Benson
Mareg: Peter Lurie
Roan: B.J. Ward
Tio: Kim Mai Guest
Skye: Paul Eiding
Melfice: John Cygan
Zera: Richard Doyle
Oro: Paul Eiding
Selene: Kim Mai Guest
Elmo: B.J. Ward
Father Carius: Cam Clarke
Gonzola: Richard Doyle
Risotto: Cam Clarke
Carpaccio: Paul Eiding
Paella: Jennifer Hale
Gatta: Peter Lurie
Reena: Jodi Benson
Client: John Cygan
Client's Daughter: Kim Mai Guest
Village Chief: Richard Doyle
Brother 1: John Cygan
Brother 2: Peter Lurie
Brother 3: Paul Eiding

About the Audio CD



PROFILE

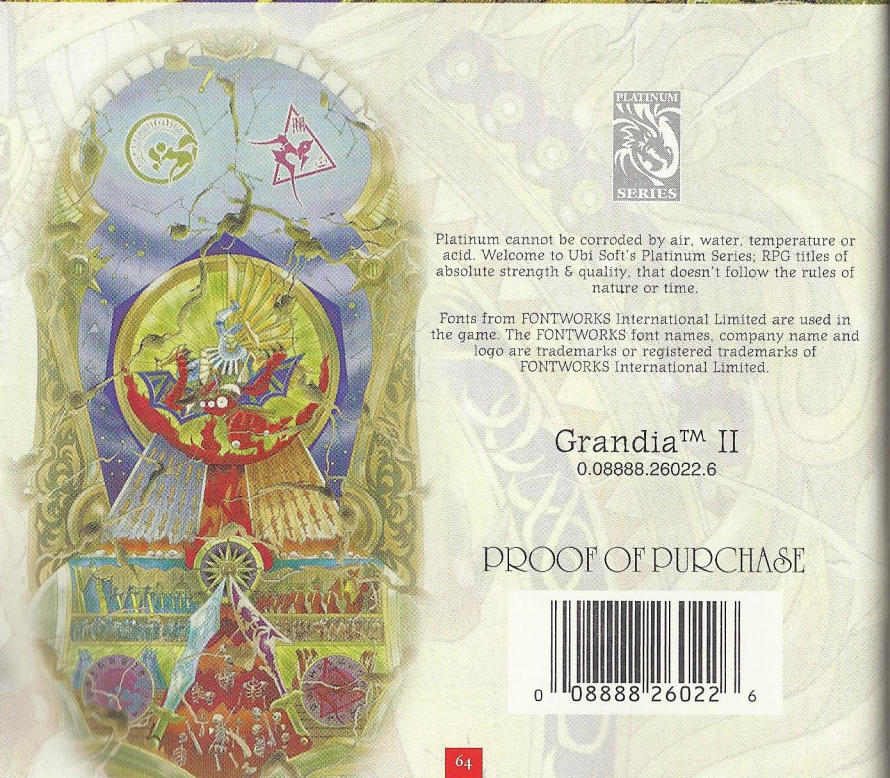
Noriyuki Iwadare

Born in Matsumoto City in Nagano, Japan, Iwadare learned the basics of composing music on his own, during college. After years of being involved with band, he professionally started composing game music. Between 1991 and 1997 Iwadare was recognized in an awards ceremony for his work as he won "Best Music Awards" for his work with GameArts. Iwadare was and is involved in many other music related activities, including compositions for Tokyo Disneyland and a variety of stage music and dance performances. He is also a contributing editor for Dreamcast Magazine, in Japan.

TRACK LIST

1. Canção do povo (Little Shelter MIX)
2. Carbo
3. A Deus
4. DangerousZone
5. Agear
6. Fight!! Ver. 1
7. Lilique
8. Mirumu
9. Saint Heim
10. Fight!! Ver. 2
11. A Deus (SUNKING MIX)
12. Canção do povo

All music for tracks 1 - 12 are provided by Noriyuki Iwadare. Words and vocals on tracks 1, 3, 11 & 12 by Kaori Kawasumi. Track 1 remixed by Yoshiharu Ohta. Track 11 remixed by Alulu-Can.



Platinum cannot be corroded by air, water, temperature or acid. Welcome to Ubi Soft's Platinum Series; RPG titles of absolute strength & quality, that doesn't follow the rules of nature or time.

Fonts from FONTWORKS International Limited are used in the game. The FONTWORKS font names, company name and logo are trademarks or registered trademarks of FONTWORKS International Limited.

Grandia™ II
0.08888.26022.6

PROOF OF PURCHASE



UBI SOFT ENTERTAINMENT, INC. LIMITED WARRANTY

Ubi Soft Entertainment warrants to the original purchaser that the optical media on which Grandia™ II is distributed is free from defects in materials and workmanship for a period of ninety (90) days from the date of purchase. This Ubi Soft, Inc. software program is sold "as is", without express or implied warranty of any kind, and Ubi Soft is not liable for any losses or damages of any kind resulting from the use of this program. Ubi Soft, Inc. agrees for a period of ninety (90) days to replace defective media free of charge, provided you return the defective item with dated proof of payment to the store from which this product was purchased. This warranty shall not be applicable and shall be void if the defect in the Ubi Soft, Inc. software product has risen through abuse, unreasonable use, mistreatment or neglect.

LIMITATIONS - This warranty is in lieu of all other warranties and no other representations or claims of any nature shall be binding on or obligate Ubi Soft, Inc. Any implied warranties applicable to this software product, including its quality, performance, merchantability and fitness for a particular purpose, are limited to the ninety (90) day period described above. In no event will Ubi Soft, Inc. be liable for any direct, indirect, special, incidental, or consequential damages resulting from possession, use, inability to use or malfunction of this Ubi Soft, Inc. software product or documentation, even if advised of the possibility of such damages. In no case shall Ubi Soft, Inc.'s liability exceed the amount of the license fee paid. The warranty and remedies set forth above are exclusive and in lieu of all others, oral or written, express or implied. Some states do not allow limitations as to how long an implied warranty lasts and/or exclusions of liability may not apply to you. This warranty gives you specific rights, and you may also have other rights that vary from state to state.

TECHNICAL SUPPORT - If you need technical assistance with this product, call us at (415)547-4028 Monday through Friday between 8:30AM and 5:30PM, Pacific Standard Time, or write to us at the address noted below. No hints, tips, or codes are available from this phone number or address.

TO REACH US ONLINE - Access our Web Site at <http://www.ubisoft.com>



Ubi Soft Entertainment, Inc. 625 Third Street, 3rd Floor, San Francisco, CA 94107

Licensed from ESP/Game Arts by Ubi Soft Entertainment. Original game © 2000 Game Arts. English Translation © 2000 Ubi Soft Entertainment. Grandia is a trademark of Game Arts Co., Ltd. Character designs by Youshi Kanoë. World designs by Katsumi Aizaki and Masashi Hazama. Ubi Soft Entertainment and the Ubi Soft logo are registered trademarks of Ubi Soft, Inc. All rights reserved.

ESRB RATING

This product has been rated by the Entertainment Software Rating Board. For information about the ESRB rating, or to comment about the appropriateness of the rating, please contact the ESRB at 1-800-771-3772.

Sega is registered in the US Patent and Trademark Office. Sega, Dreamcast and the Dreamcast logo are either registered trademarks or trademarks of Sega Enterprises, Ltd. All Rights Reserved. Made and printed in the USA. **WARNING:** Operates only with NTSC televisions and Sega Dreamcast systems purchased in North and South America (except Argentina, Paraguay and Uruguay). Will not operate with any other televisions or Sega Dreamcast systems. Product covered under one or more of the following U.S. Patents: 5,460,374; 5,525,770; 5,627,895; 5,688,173; 4,442,486; 4,454,594; 4,462,076; Re. 35,839; Japanese Patent No.2870538, (Patents pending in U.S. and other countries); Canada Patent No. 1,183,276. The ratings icon is a trademark of the Interactive Digital Software Association. Sega of America Dreamcast, Inc., P.O. Box 7639, San Francisco, CA 94120.

