

LOOK
FOR

JEREMY MCGRATH SUPERCROSS™ 2000



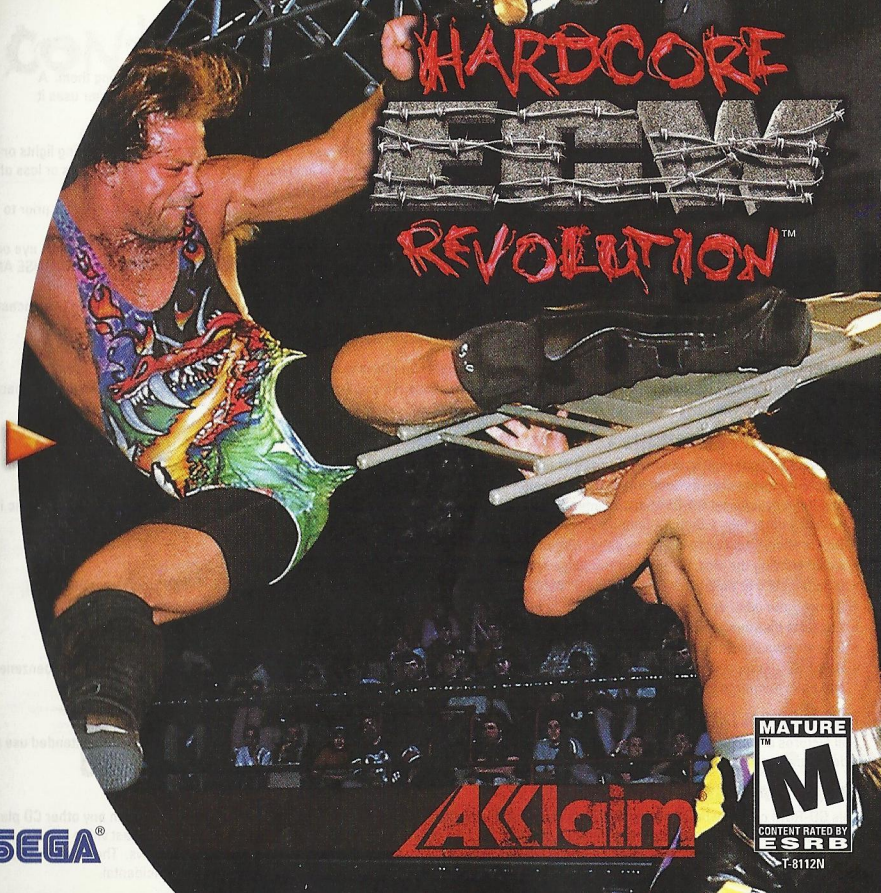
Acclaim SPORTS

Jeremy McGrath SUPERCROSS™ 2000 and Acclaim® & © 2000 Acclaim Entertainment, Inc. All Rights Reserved. Developed by Studios Salt Lake City. All Rights Reserved. Marketed by Acclaim. Distributed by Acclaim Distribution, Inc., One Acclaim Plaza Glen Cove, NY 11542-2777.
Sega is registered in the US Patent and Trademark Office. Sega Dreamcast and the Dreamcast Swirl, are trademarks of SEGA of America, P.O. Box 7639, San Francisco, CA 94120. All Rights Reserved. Programmed in Japan. Made and printed in the USA. WARNING: Operates only with NTSC televisions and Sega Dreamcast systems purchased in North and South America (except Argentina, Paraguay and Uruguay). Will not operate with any other televisions or Sega Dreamcast systems. Product covered under one or more of the following U.S. Patents: 5,490,374; 5,525,770; 5,627,895; 5,688,173; 4,442,488; 4,454,596; 4,462,076; Re. 35,839; Japanese Patent No. 2870538; (Patents pending in U.S. and other countries); Canada Patent No. 1,163,276. The ratings icon is a trademark of the Interactive Digital Software Association.

SEGA®

SEGA®

HARDCORE HEAVY REVOLUTION™



Acclaim

MATURE
TM
M
CONTENT RATED BY
ESRB

T-8112N

WARNINGS Read Before Using Your Sega Dreamcast Video Game System

CAUTION

Anyone who uses the Sega Dreamcast should read the operating manual for the software and console before operating them. A responsible adult should read these manuals together with any minors who will use the Sega Dreamcast before the minor uses it.

HEALTH AND EPILEPSY WARNING

Some small number of people are susceptible to epileptic seizures or loss of consciousness when exposed to certain flashing lights or light patterns that they encounter in everyday life, such as those in certain television images or video games. These seizures or loss of consciousness may occur even if the person has never had an epileptic seizure.

If you or anyone in your family has ever had symptoms related to epilepsy when exposed to flashing lights, consult your doctor prior to using Sega Dreamcast.

In all cases, parents should monitor the use of video games by their children. If any player experiences dizziness, blurred vision, eye or muscle twitches, loss of consciousness, disorientation, any involuntary movement or convulsion, IMMEDIATELY DISCONTINUE USE AND CONSULT YOUR DOCTOR BEFORE RESUMING PLAY.

To reduce the possibility of such symptoms, the operator must follow these safety precautions at all times when using Sega Dreamcast:

- Sit a minimum of 6.5 feet away from the television screen. This should be as far as the length of the controller cable.
- Do not play if you are tired or have not had much sleep.
- Make sure that the room in which you are playing has all the lights on and is well lit.
- Stop playing video games for at least ten to twenty minutes per hour. This will rest your eyes, neck, arms and fingers so that you can continue comfortably playing the game in the future.

OPERATING PRECAUTIONS

To prevent personal injury, property damage or malfunction:

- Before removing disc, be sure it has stopped spinning.
- The Sega Dreamcast GD-ROM disc is intended for use exclusively on the Sega Dreamcast video game system. Do not use this disc in anything other than a Sega Dreamcast console, especially not in a CD player.
- Do not allow fingerprints or dirt on either side of the disc.
- Avoid bending the disc. Do not touch, smudge or scratch its surface.
- Do not modify or enlarge the center hole of the disc or use a disc that is cracked, modified or repaired with adhesive tape.
- Do not write on or apply anything to either side of the disc.
- Store the disc in its original case and do not expose it to high temperature and humidity.
- Do not leave the disc in direct sunlight or near a radiator or other source of heat.
- Use lens cleaner and a soft dry cloth to clean disc, wiping gently from the center to the edge. Never use chemicals such as benzene and paint thinner to clean disc.

PROJECTION TELEVISION WARNING

Still pictures or images may cause permanent picture tube damage or mark the phosphor of the CRT. Avoid repeated or extended use of video games on large-screen projection televisions.

SEGA DREAMCAST VIDEO GAME USE

This GD-ROM can only be used with the Sega Dreamcast video game system. Do not attempt to play this GD-ROM on any other CD player, doing so may damage the headphones and/or speakers. This game is licensed for home play on the Sega Dreamcast video game system only. Unauthorized copying, reproduction, rental, public performance of this game is a violation of applicable laws. The characters and events portrayed in this game are purely fictional. Any similarity to other persons, living or dead, is purely coincidental.

CONTENTS

Loading	2
It's a Wrestling Revolution!	4
Starting/Menus	5
Selecting Game Modes	6
Selecting Wrestlers	6
Options	6
Default Controls	8
Game Modes & Match Styles	10
Exhibition	10
Career Mode	11
Tournament	18
Pay-Per-View	18
Create a Wrestler	20
Utilities	24

LOADING

1. Make sure the power is OFF on your Sega Dreamcast™ Console.
 2. Insert your ECW Hardcore Revolution™ disc into the Control Deck as described in the instruction manual.
- Note: ECW Hardcore Revolution™ is a 1 to 4 player game*. Before turning the Sega Dreamcast power ON, connect the controller or other peripheral equipment into the control ports of the Sega Dreamcast.**
3. Insert Controller into Controller Port A.
 4. If you wish to save a game, insert a VMU (Visual Memory Unit) memory card (sold separately).
 5. Press the power switch to ON (Important: Never touch the Analog Thumb Pad or Triggers L/R while turning the Sega Dreamcast power ON. Doing so may disrupt the controller initialization procedure and result in malfunction).

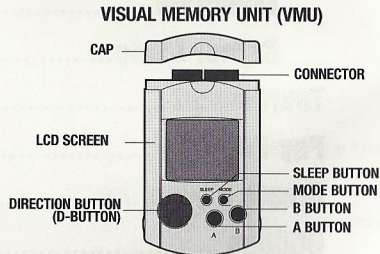
While saving a game file, never turn OFF the Sega Dreamcast power, remove the memory card or disconnect the controller.

***Purchase additional controllers (sold separately) to play with two or more people.**

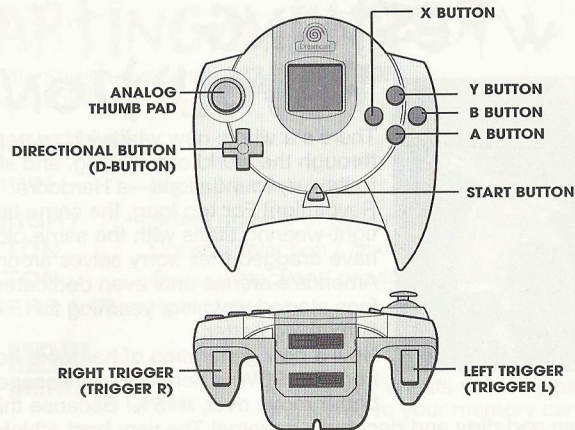
To return to the title screen at any point during game play, simultaneously press and hold the A, B, X, Y and Start Buttons. This will cause the Sega Dreamcast to soft-reset the software and display the title screen.



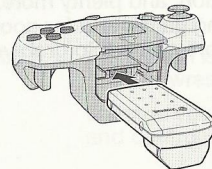
Use these ports to connect the Sega Dreamcast Controller or other peripheral equipment. From left to right are **CONTROL PORT A, CONTROL PORT B, CONTROL PORT C, AND CONTROL PORT D.** Use each port to connect controllers for players 1 to 4 respectively.
NOTE: CONTROL PORT can also be referred to as PORT.



Never disconnect the VMU / VMs while performing a battle or exchanging data when connected to another VMU / VM. Also note that leaving two VMU / VMs connected for a long period of time will considerably shorten the life of the batteries.

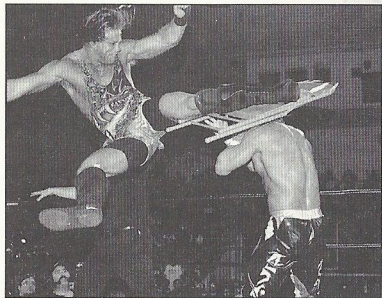


Never touch the Analog Thumb Pad or Triggers L/R while turning the Sega Dreamcast power ON. Doing so may disrupt the controller initialization procedure and result in malfunction. Operation with incompatible controllers is not guaranteed.



When the Jump Pack / Vibration Pack is inserted into Expansion Socket 1 of the Sega Dreamcast Controller, the Jump Pack / Vibration Pack does not lock into place and may fall out during game play or otherwise inhibit game operation.

IT'S A WRESTLING REVOLUTION!



There's a whole new whirlwind sweeping through the world of wrestling, and shaking it to its very foundations—a Hardcore Revolution! For too long, the same tired tight-wearing titans with the same old moves have dragged their sorry selves around America's arenas until even dedicated fans started yawning, yearning for something better.

Now a new generation of hardcore heroes from the ECW is here with a message—better move over, @\$%! Because this is

wrestling that's down and dirty and decidedly extreme! The very best athletes ever to meet on a mat are all here to thrill and shock you! There's a ton of ways to play, and they all share one thing: they're hardcore through and through! You can try your hand at a Career, with all the ups and downs and upsets, set up your own wild Pay-Per-View scenarios, create your own killer custom wrestlers and bring them in to stomp the guts out of the competition, and plenty more. There are match modes here never seen before in any wrestling game, and for good reason: they're too harsh for anyone but the ECW Hardcore gamer! So grab your controller and get ready to join a wrestling revolution!

STARTING/MENUS

On the Title Screen, press the **START BUTTON**.
You will go to the Main Menu

Menu controls

UP/DOWN	Highlight menu item
LEFT/RIGHT	Select number of players/toggle menu settings
A BUTTON	Confirm selection / next screen
B BUTTON	Cancel selection / previous screen
TRIGGERS L/R	Help Menu

MAIN MENU CHEAT MENU

Access any cheats you may have earned and saved to your memory card.

EXHIBITION CAREER

Try a variety of Exhibition matches.

Start here to begin your quest for wrestling's highest honors.

TOURNAMENT PAY-PER-VIEW CREATE/EDIT WRESTLER

Get into the ring and battle up the ladder!

Create your own PPV wrestling spectacular!

Any match is livelier when you use a custom wrestler!

UTILITIES

Manage your memory card, set options and controller configurations.

SELECTING GAME MODES

After selecting Exhibition from the main menu, you need to select the type of match you wish to compete in. See Game Modes & Match Styles on page 10 for details on the various modes.

SELECTING WRESTLERS

After selecting the number of players and the match type, it's time to select your wrestler. Use the **DIRECTIONAL BUTTONS** to scroll to the desired wrestler and press the **A BUTTON** to select or press the **R TRIGGER** to have the computer randomly select. Depending on the match type, you'll select the wrestler you want to control, those the computer will control or have random ones assigned. In Career mode, you select a wrestler (2 in Tag Career) to guide through an entire season. In all other matches, Player 1 selects CPU wrestlers. If you've created and saved any wrestlers in Create a Wrestler (see page 20 for details), you can load them for use in any game mode.

OPTIONS

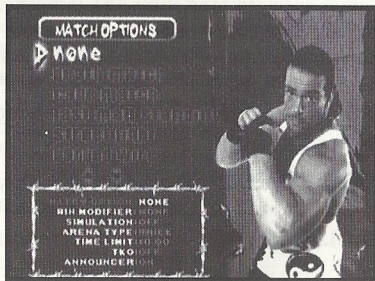
Once you've selected your match and wrestler(s) you can select **START GAME** to begin wrestling, or set your options. Available options change depending on the type of mode and match you select.

MATCH OPTIONS

Deathmatch Make weapons available during your selected match, and no count out.

Cage Match Battles within the confines of a steel cage.

Last Man Standing Once an opponent gets knocked down, a counter will count down from 10. If the number reaches 1 before the wrestler stands back up, he loses.



Toughman Match This option is for the 2 on 1 and 3 on 1 game modes. If toughman is ON, the disadvantaged wrestlers must pin all of his opponents, not just one.

Streetfight This allows players to be pinned inside or outside the ring.

Barbed wire The ropes are replaced with razor-sharp barbed wire.

WIN MODIFIERS

Iron Man Match: The winner of the selected match is the player with the most pins within a specific match length.

I Quit Match: A player can only win by forcing the opponent to submit.

First Blood: The winner is the first player to cause the other to bleed (if Blood option is turned on under Utilities).

Finisher Only: The player can only win by using his/her finisher on the opponent.

2 out of 3 Victories: The player must meet the win conditions two out of three times to win the match.

GAME OPTIONS

PREMATCH OPTIONS

Simulation: This allows the players to watch the match as opposed to wrestling the match.

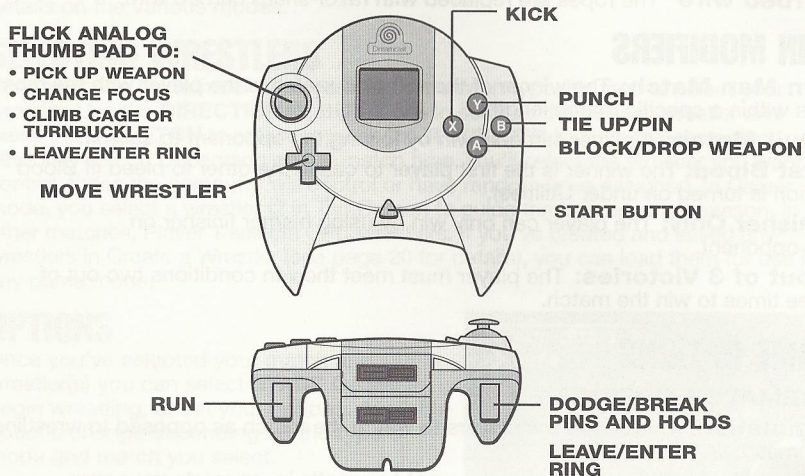
Arena Type: Select the arena you want to wrestle in, or create your own custom arena.

Time Limit: This can be set from 1 minute up to 60 minutes or play with no limit.

TKO: If this is on, the match will end after a player has taken a specific amount of damage.

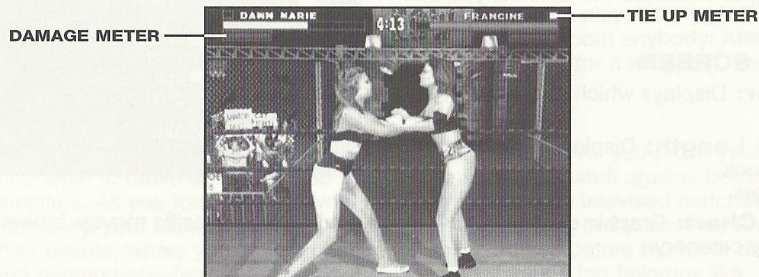
Announcer: Wrestle with or without the announcer's commentary.

DEFAULT CONTROLS



Never touch the Analog Thumb Pad or Triggers L/R while turning the Sega Dreamcast power ON. Doing so may disrupt the controller initialization procedure and result in malfunction.

THE SQUARED CIRCLE



Damage Meter

GREEN: You're in great shape—try anything!

ORANGE: You're tired. You'll have to really start to mash the buttons to escape holds and submissions.

RED: You're in danger—you can be pinned! Watch out for finishing moves!

Tie Up Meter

As a wrestler scores hits, the small box next to the wrestler's name turns different shades of blue. The more blue the box is, the greater the advantage during a tie up.

The Pause Screen

Press **START** at any time during a game to bring up the Pause Menu. **Resume** play, view your **Move List** to see your wrestler's moves for the current situation (and the controls), **Quit** the current match and return to the main menu, and see the match type, win modifier and win location.

MATCH STATISTICS

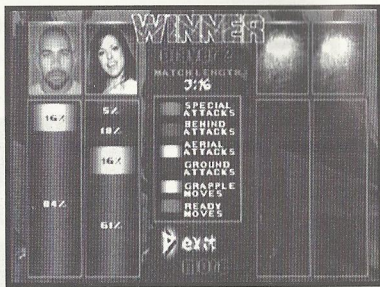
At the end of each match the game will compile statistics about the match that was just fought. There are two screens you can view.

FIRST SCREEN

Winner: Displays which player won the match.

Match Length: Displays how long the match took in minutes.

Move Chart: Graphic display of how much you're using specific moves, broken down by category.



SECOND SCREEN

The second screen offers even more statistic detail, including your total chants, taunts, submission attempts, reversals—just take a look for yourself!

GAME MODES & MATCH STYLES

Hardcore Revolution™ offers an incredible array of wrestling modes and match styles.

EXHIBITION

An exhibition match is a single match of any type. Exhibition matches don't count in the standings. It's just a friendly way to give someone a beating, or to take one if you haven't perfected your skills. Use Exhibition mode to master your play before taking on the rigors of a full Career.

CAREER MODE

This mode is for the real ECW wrestling fan, the kind of player who's not satisfied with simply stomping a few strangers and calling it a day. In this mode, you go through an entire season, touring the fabled cities of America and handing out hardship to anyone who takes you on. By the time you've played through the Career Mode, you're among the elite who can beat just about anybody! After you've beat the CPU a few times, invite your friends over for a whipping, because a Career Mode can be played with up to 4 human players.

About Career Mode

You begin at the bottom, an untested rookie ranked 20th. As you prove yourself and begin to move up in rank you can start to show your stuff against better name wrestlers. As you tour around, eventually you'll end up on televised matches. Ultimately, your skilled wrestler will be eligible to compete in the coveted Pay-Per-View events, where you have a chance to prove yourself before the most devoted—and demanding—fans in the world. PPV matches include fan favorites like Hardcore Heaven, Guilty as Charged, Living Dangerously, Heatwave, Anarchy Rulz, and November 2 Remember.

Once you're ranked #1, your next PPV match will be for the Acclaim Hardcore Championship belt. If you win the belt, you'll keep your #1 ranking, and then have to defend your belt to prove you're not a paper champion. 5 successful title defenses will do the trick. You will then enter into the bottom (#15 ranking) of the TV Title competition, where reaching a #1 ranking insures you a chance at the Television Championship. Say you've earned the first two titles. Feeling pretty good, starting to believe you can beat anybody right? Well take a breather, brother, because you've got to start another round of competition if you want to prove you've got what it takes to win wrestling's top honor, the ECW World Heavyweight Champion! Think you can take all three? Good luck!

Career Matches

The ECW tour moves from city to city all across this great land of ours, bringing joy and seriously disturbing entertainment to all. Most of these matches could only be enjoyed live and in person—until now! These matches are worth 1 ranking point. Of course, every Friday some ECW matches are televised on TNN, and there are special PPV events.

PAY-PER-VIEW: This is a special televised event. These matches have the most flash and include Wrestler Intros. It's a real chance to shine and build up a following.

LIVING DANGEROUSLY™: Compete against fellow wrestlers in a grueling specialty match. This is an 8 man tournament. This particular event doesn't end until you either lose 1 of the 3 matches or win all 3.

ANARCHY RULZ™: Random match types include: Deathmatch, 3 Way Dance, 2 on 1, Tag Team, Elimination Style matches, etc.

GUILTY AS CHARGED™: 3 wrestlers join your regular wrestler, creating a 4 man team to fight against an opposing 4 man team. If your team wins, your wrestler moves up in rank, even if your wrestler was pinned during the match.

HARDCORE HEAVEN™: This is a Barbed Wire or Cage match, so someone's bound to suffer!

NOVEMBER 2 REMEMBER™: This is a regular match. It is only played when a player is attempting to win the Heavyweight belt.

HEATWAVE™: Now this is ugly: a mad mix of modes where anything can happen.

The Multiplayer Career

In a multiplayer version, there is an initial Elimination Style 4 Way Dance match to place players in slots from 20th – 17th for 4 players (the winner is ranked 17th). After that, each player in rank order fights a match against a randomly selected CPU or human player. Losers are deducted 1 rank and winners are advanced 1 rank. Ties will be resolved during the TNN shows on Fridays. TNN matches are always 4 Way Dance matches. When a player is ranked 1st he/she must fight in a match versus the other human players to prove why he/she is the number 1 contender. If you win, you will have the chance to take on the multiplayer career champion for the ECW Heavyweight Championship belt. If that #1 ranked player loses, the player's ranking is reduced by 1. All other players advance 1 rank.

Tag Team Career

The Tag Team Career is similar to the regular career mode, except all matches are tag matches, as your team battles to gain the Tag Team Championship belt. This match can be played with the players on the same team (Tag Career Co-Op) or on separate teams (Tag Team Comp).

MATCH STYLES

There are two basic match styles: **Normal** and **Elimination** Style. In a Normal match, you win when you beat your first opponent, while in an Elimination Style match you must beat all your opponents to triumph.

NORMAL MATCHES

VERSUS

This is the classic 1 on 1 match. Each player selects 1 wrestler and they face off. The match continues until the rules set up by the player have been satisfied.

TAG TEAM

Tag team is a match that requires 4 wrestlers. Under regular rules this match would end as soon as a legal wrestler has been pinned. Two wrestlers are outside of the ring standing on the apron kitty corner from each other. It is a 2 man team with only 1 man being able to stay in the ring legally. The illegal wrestler has to stay outside on the apron until he is tagged. Once the legal man tags the illegal man, their positions switch.

The illegal man can enter the ring, but only for a count of 5 seconds. When the 5 seconds are up, the illegal man must then exit the ring and stay back in his team's corner. This time meter will slowly fill back up to 5 seconds.

NOTE: Once a player is tagged out, that wrestler must remain outside the ring for approximately 10 seconds, during which time he or she cannot be controlled.

To tag a teammate: Flick the **ANALOG THUMB PAD** to focus on your teammate, then press the Tie Up button (**B BUTTON**) to tag.

To call in a teammate: HOLD **BLOCK** + TAP **DODGE** to call in your teammate.

TORNADO

This mode features 4 wrestlers in the ring at once in a 2-on-2 match without tag team rules. The match ends when both people on one team have been eliminated. When one person is eliminated, the match becomes a 2-on-1 handicap match. The eliminated player can continue to wrestle outside of the ring on the floor, so beware!

1 ON 2

In this mode, two players face off against a single foe. The individual wrestler must fend for himself while the other two wrestlers are free to pummel at will. The teamed wrestlers are free to attack the single wrestler as much as they like and are not restricted to a tag format. Under normal circumstances, the match will end when a wrestler from 1 team has pinned a wrestler on the other team. The disadvantaged wrestler doesn't need to pin both wrestlers.

1 ON 3

If 2 on 1 is too easy for you, try 3 on 1! The rules are the same, but the odds are much worse!

ON
ENT INC

9007



FIRST
CLASS
POSTAGE
HERE

FILL OUT
AND WIN!

see back for details

ECW HARDCORE REVOLUTION™ FOR SEGA DREAMCAST™

Product Item # 83203

1 Name _____
2 E-Mail Address _____
3 Phone (_____) _____
4 Date _____
5 Street Address _____
6 City, State, Zip _____

however. Outside the unsuspecting

s who stay outside do not interact in g wrestlers remain bbing distance of the ring wander

n eliminated, the r submitted the

Elimination Style in the ring at the hen there is only 1

has a big advantage: ne man team must ation, the user fights has eliminated his s continues until the

ate.

15

TAG TEAM

Tag team is a match that ends as soon as a legal wrestler standing on the apron is able to get one man being able to stand on the apron until he is able to switch positions.

The illegal man can enter the ring. If 10 seconds are up, the illegal man is in the corner. This time meter is on. NOTE: Once a player is eliminated, approximately 10 seconds are given to the remaining player.

To tag a teammate: When a player is eliminated, then press the Tie Up button.

To call in a teammate: When a player is eliminated, then press the Tie Up button.

TORNADO

This mode features 4 player team rules. The match ends when one person is eliminated. The eliminated player is out of the match so beware!

1 ON 2

In this mode, two players fight for himself while the other two teamed wrestlers are not restricted to a tag team. When a wrestler from the disadvantaged wrestler is eliminated, the match ends.

1 ON 3

If 2 on 1 is too difficult, odds are much better.

From: _____

Check here if this is a new address.

WARRANTY REGISTRATION
ACCLAIM ENTERTAINMENT
PO BOX 9007
GLEN COVE NY 11542-9007



LUMBERJACK

In this mode, two players face off in the ring. There is a catch, however. Outside the ring are two CPU controlled wrestlers eager to pound any poor, unsuspecting wrestler who finds himself outside of the ring.

Select your wrestlers, then choose two CPU lumberjack players who stay outside the ring on opposite sides. The CPU wrestlers outside the ring do not interact in any way with the wrestlers inside the ring—as long as the in-ring wrestlers remain inside the ring and are careful not to find themselves within grabbing distance of either CPU wrestler outside the ring! Once the wrestlers inside the ring wander outside it, they'd better have their affairs in order!

3 WAY DANCE

Three wrestlers compete in this match. Once a person has been eliminated, the match is over and the victory goes to the person who pinned or submitted the eliminated person.

BATTLE ROYAL

The rules for Battle Royal are exactly the same as the rules for Elimination Style Battle Royal with the following exceptions: all four players start in the ring at the same time and there are only four wrestlers. The match ends when there is only 1 wrestler left in the ring.

ELIMINATION STYLE MATCHES

Vs

In this mode, two players face off in the ring, but one opponent has a big advantage: one player is able to select a four man team! The player with a one man team must defeat all members of the other team. In a one player Vs. elimination, the user fights a CPU one-on-one until the CPU gets eliminated. Once the user has eliminated his opponent, another wrestler appears that the user must fight. This continues until the user has successfully beaten four CPU opponents.

TAG TEAM

This mode is similar to a regular Vs. mode, but with a teammate. In this mode, the player and his/her teammate fight a teamed-up opponent. As the enemy wrestlers are eliminated they are replaced with fresh teammates until all four wrestlers on the

enemy team have been eliminated. If both the player and his/her teammate are defeated before they defeat the enemy wrestlers, the match is over. Tag Team rules apply.

8 MAN TAG

This is a Tag Team Marathon Match with two teams. Each team has four wrestlers and it's a fight to the finish. However, each team has his/her tag partner and two other teammates waiting in the wings. Whenever a wrestler is eliminated, they are replaced with the tag partner on the apron and a teammate waiting in the wings comes in to become the new tag partner. The match ends when there is only one team left.

4 WAY DANCE

There are four wrestlers in the ring at once in a free-for-all style. The match ends when there is only one wrestler left. Once a wrestler has been eliminated, he/she is forced outside of the ring. Elimination is by submission or pinfall.

3 WAY DANCE

This type of match is very similar to a Vs. match. Three people are in the ring at once in a free-for-all-format. The match ends after two wrestlers have been eliminated. The winner is the wrestler that didn't get eliminated.

STABLE MATCH

Same as 4 Way Dance only each player has a team of four wrestlers. When a player gets pinned, his/her wrestler leaves and a new one comes out until all his/her wrestlers are eliminated. The match ends when there is only one wrestler left in the ring and all of the other teams' wrestlers have been eliminated. Also, the last member of each team is allowed to remain outside the ring and fight with any other wrestlers outside the ring or wrestlers that he/she drags from inside the ring to outside the ring.

BATTLE ROYAL

The Battle Royal is among the wildest spectacles in wrestling, a straight ahead, free-for-all with no pins, no submissions, and no count outs! You can't even leave the ring and fight outside. It starts out with two wrestlers grappling in the ring, with another wrestler entering every 30 seconds. This continues until four wrestlers are in the ring at once. You eliminate opponents by throwing them over the top rope. Once a wrestler is eliminated, another fills that spot until all 30 wrestlers have been in the ring. When the Battle is over, a

stat screen will come up showing how many times you eliminated someone, how many times you were eliminated, and how much in-ring time you had. The winner is the last man in the ring. The Battle Royal also lets you select wrestlers for all 30 wrestler slots if you want.

Some Specialty Match Types

In Hardcore Revolution™, you'll come across some truly brutal match types, which can show up at any time. You can turn on Hardcore and Cage matches in the Match Options. Here's a taste of what to expect, besides a lot of yelling and whimpering.

BARBED WIRE MATCH

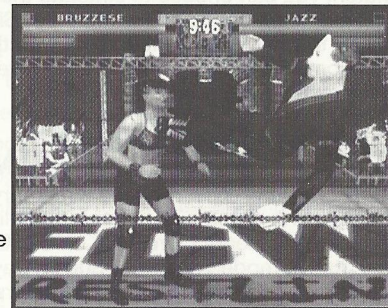
We've replaced the usual ring ropes with razor-sharp barbed wire! Yep, those strands of barbed wire are real and they can sure give you something to write home from the hospital about!

STEEL CAGE MATCH

The winner is the first wrestler to climb out of the cage, usually leaving a helplessly beaten opponent lying on the mat below. If you think you can climb out to safety before your opponent is down, you'll soon have that faith shaken, friend, along with every bone in your body! The player can turn the Steel Cage on in the options before starting a match.

DEATHMATCH

In a Deathmatch, you can forget about fine points and concentrate on fire power! Just about any object can be used to punish your opponent. Your opponent will be hoping to treat you to a weapon-enhanced beating, too, so be prepared to hurt! Weapons are turned on by selecting a Deathmatch or Last Man Standing match.



TOURNAMENT

In this mode, the wrestlers face off in regular Vs. matches in a playoff-style tournament. If a player wins, he/she advances to the next tier. The mode is complete when there is only 1 wrestler left. On the options screen before each match, you can choose to simulate the upcoming match. If you choose simulation, you may then choose View Match or Sim Winner. Simulating a match will return the player to the tournament screen, with the winner advancing. Up to 8 human players can compete in Tournament play. Player 1 will select all of the wrestlers. All players will wrestle using controllers 1 and 2.

PAY-PER-VIEW

NOTE: Pay-Per-View requires a memory card (sold separately).
Want to re-live some of greatest wrestling matches ever broadcasted? Ever wanted to create the perfect wrestling card? "Create your Own Pay-Per-View" mode is for you! In this mode you get to build a Pay-Per-View from the ground up. You can pick the name of the event, select the colors of the apron curtains—even choose between a House arena and a Pay-Per-View arena! You can also pick the type of matches for the Pay-Per-View, select the wrestlers who will participate in the Pay-Per-View and determine which wrestlers will square off—you're the big shot now!

PAY-PER-VIEW SETUP

When you select Pay-Per-View, you'll come to the Pay-Per-View Setup screen.

Name Event

Use your controller to give your Pay-Per-View a name.

- **Directional Buttons** to select a character.
- Press the **A BUTTON** to enter a character.
- Select **END** and press the **A BUTTON** when the name is complete to return to the PPV setup menu.
- Press the **B BUTTON** to return to the PPV setup menu.

Select Matches There are 8 match slots available. You can use as many or as few of the slots as you like. When a slot is selected a pop up menu let's you choose Exhibition or Tournament style play. At the next screen, select how many players will compete, then scroll to the desired match and press the **A BUTTON**. Once you select a match type you'll go to the wrestler select screen to choose the wrestlers for that particular match. Press the **B BUTTON** to cancel a selection and go back to a previous screen.

EDIT A STADIUM

Customize the look of your PPV spectacular!

Stadium: Select where you want the action to take place.

Ring Lights: Use the right light color to set an atmosphere of fear!

Entrance Lights: Select the color lighting for the stage entrance area.

Ring Mat: Change the colors of the mat logo.

Ring Apron: Select from several different banners to hang on the ring apron.

Pad Color: Select the color of the ring post pads.

Post Color: Set the ring post color.

Rope Color: Hey, that matches my tights!

Banners 1, 2, 3: Select different banners to hang on the scaffolding.

When you've set up the stadium to perfection, press the **B BUTTON** to return to the Pay-Per-View Setup screen.

When you're ready to pound out some PPV action, select SAVE PPV to save your settings (you cannot progress until you've done so). Once you've saved your PPV, select START PPV. The PPV game will load, and you will be ready to roar.

LOAD PPV: Load up and play a previously saved PPV.

SAVE PPV: Save your current PPV progress and settings.

CLEAR PPV: Reset the Pay-Per-View.

START PPV: Begin your Hardcore Revolution spectacular.

CREATE A WRESTLER

This is where you can create, edit and save custom wrestlers. Then you can take them in to the ring to prove their mettle in the midst of all manner of Hardcore Revolution™ madness!

CONTROLS

Select color settings	Y BUTTON
Highlight option/ Cycle through settings	UP/DOWN DIRECTIONAL BUTTONS
Increase/Decrease sliders	LEFT/RIGHT DIRECTIONAL BUTTONS
Cancel/previous item	B BUTTON
Select/confirm item	A BUTTON
Turn Wrestler in view window	L/R TRIGGER

CREATING YOUR WRESTLER

Create: Access the create menu, where you can alter all sorts of body settings, including adding text to costumes.

Name: Give your perfect creature the perfect name.

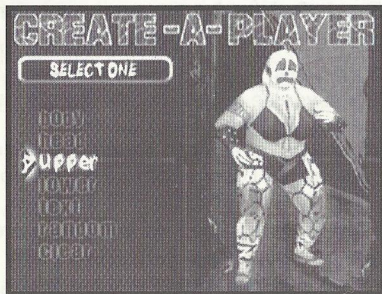
Attributes: Assign the desired mix of attributes like stamina, speed, etc.

Moves: Choose which moves your wrestler can pull off.

Personality: Use this screen to select your theme music, run-in partner and whether the crowd cheers or boos your wrestler.

Memory Card: Access your memory card to use Save and Load functions, or to Delete.

Clear Wrestler: Erase the current creation.



CREATE

Highlight Create and press the **A BUTTON**. A menu will appear with a number of options: Body, Head, Upper, Lower, Text, Random and Clear. Select random to have the computer create a wrestler with random elements. Clear will clear any unsaved current creations. The remaining options each have several sub-categories of unwholesome options you can set. Get in there and see what you can do! Press the **A BUTTON** when an option is highlighted. A sub-menu will appear with all the settings you can handle. Scroll up or down to highlight an option, then press the **A BUTTON** to enter.

Prebuilt or Created? In many cases, you can choose from a vast selection of prebuilt items, or create your own. To create your own, select Create and press the **A BUTTON**. You can then select from any available options (for example, under Masks, after you select Create you can choose Masks or Designs). Next, scroll to a desired choice, mess with the color if you like, then select it.

BODY: Select your Body Type, Skin Type and Color.

HEAD: Choose the Eyes, Nose, Mouth, Hair, Beard, Mask and Accessories that will make your wrestler come to life!

UPPER: Choose from an incredible inventory of garish garments and absurd accessories!

LOWER: Choose plenty of loco looks for your wrestler's loins and add some comfy footwear!

Color Settings

You can set the color/tone on some selected items. To do so, press the **Y BUTTON** to activate the color area, press **UP** or **DOWN** on the Directional Button to highlight a color option slider, then move the slider (**LEFT** or **RIGHT**) to get the look you want. When you're done, press the **B BUTTON** to return to the menu area.

Different options have different color adjustment options available. You can usually adjust:

Hue: All the colors of the rainbow, from yellowed bruise to black-eye blue!

Saturation: Sets the amount of color.

Brightness: Make the color dark or light.

Length Settings

From Upper>Shirt or Lower>Pants you can adjust sleeve and pant lengths to get the look you want. To access the length meter, press the **Y BUTTON** twice (the first press highlights the color settings), then press **LEFT** or **RIGHT** on the Directional Buttons to raise or lower the length.

TEXT

When Text is highlighted on the Create menu, press the **A BUTTON** to bring up the text editing screen. Select a clothed area you wish text to appear on and press the **A BUTTON**. You'll come to the text input screen. Press the **A BUTTON** on a selected line to access the text input window, then use the Directional Buttons to highlight desired characters and the **A BUTTON** to input a character. When text is complete, highlight **NEXT LINE** and press the **A BUTTON**. You can set text color by moving the slider. Press the **B BUTTON** to return to the body area menu.

Text options You can choose a large or small font and vertical or horizontal text alignment under Options. Press the **Y BUTTON** to access the options area, then use the Directional Buttons to highlight your choice. Press the **A BUTTON** to confirm.

RANDOM

Choose **Random** to have the computer generate a custom wrestler for you.

CLEAR

Get rid of that clunky custom freak and make a better one.

NAME

Give your Colossus a fitting fighting first and last name, and an awesome alias as well.

ATTRIBUTES

You assign your creation varying degrees of six attributes (from 1 to 10), with the total equal to 36. Common sense suggests you create a wrestler with balanced attributes, heavier in some areas, lighter in others, but have fun experimenting by creating creatures with, say, plenty of strength but no endurance, or lots of recovery

but no speed. You're sure to find their resulting performance entertaining! The attributes are:

STRENGTH Affects damage you deliver

TOUGHNESS Makes you less vulnerable to low damage attacks like punches and kicks.

SPEED Impacts walks, blocks, dodges, climbing the Turnbuckle and Cage.

RECOVERY Initial recovery value is lower, plus it lowers your chance of getting stunned.

CHARISMA Charisma affects your crowd support, which can have a big impact on the damage you do.

MAT SKILLS Affects your ability to pull off moves.

MOVES

You can choose which moves you want your custom wrestler to have in particular situations and there are plenty of moves to choose from. You can use a full set of moves from one of the ECW wrestlers, or use Edit to create your own custom set of moves from the entire Hardcore Revolution repertoire.

To Edit a Move Set: Move the highlight to a desired move type and press the **A BUTTON** to bring up the moves list for that move type. Controls for each move appear in a window to the right of the move name.

To Change Move Controls: Highlight the Buttons window and press the **A BUTTON** to view the possible button combinations available for that move. Scroll to the desired button and press the **A BUTTON** to select it, or the **B BUTTON** to go back without changing.

Note that moves are listed by the amount of damage they do, and that each move uses a certain percentage of space in your move set. Your move set can not exceed 100%.

PERSONALITY

Your new problem child will need to borrow some characteristics from existing wrestlers. You can use the crowd reaction, fighting style, theme song, entrance, run-in partner, and voice/grunts of any ECW rascal.

MEMORY CARD

Access your memory card to Load, Save or Delete a created wrestler.

CLEAR WRESTLER

Back to the drawing board. Clear any unsaved Create-A-Wrestler data and restore default settings.

UTILITIES

Utilities offers a host of gaming options. The main utilities screen offers you these choices:

SAVE OPTIONS: Access your memory card to save option settings and any cheats you've earned.

DIFFICULTY: Select among Easy, Medium and Hard skill settings.

INTROS: Choose to play with or without the ECW wrestler intros.

RECOVERY: Wrestlers will regain health during a match (ON) or not (OFF).

STEREO: Play with Stereo or Mono sound.

FX VOLUME: Turn sound effects OFF, or choose among Low, Medium and High settings.

MUSIC VOLUME: Turn the music OFF, or choose among Low, Medium and High settings.

LANGUAGE: Choose MATURE or EVERYONE. Which setting is truly HARDCORE?

NAME METER: Choose to have the wrestler's name appear (ON) or not (OFF) or to act as a HEALTH METER .

DAMAGE METER: Turn this meter ON or OFF.

TIEUP METER: Turn this meter ON or OFF.

HEALTH METER: Turn this meter ON or OFF.

BLOOD: Play with festive blood (ON) or don't (OFF).

HINTS AND TIPS

For the hottest hints and codes on ACCLAIM Titles:
Please call 1-900-407-Tips(8477)

The cost of the call is \$.95 per minute. You must be 18 or have parental permission and have a touch-tone phone.

NOTES

NOTES

26

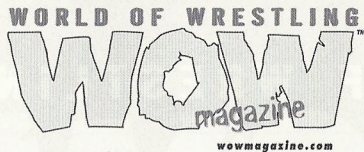
WORLD OF WRESTLING

WOWTM
magazine

wowmagazine.com

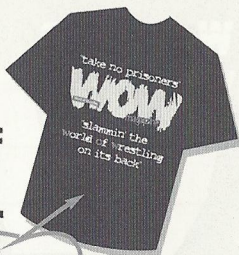
the most
electrifying magazine
at newsstands and retail stores everywhere

WOW Magazine is a registered trademark of I&S Media, Inc.



Sign me up for 12 issues of
WOW Magazine for \$49.95.

When I pay I'll get a FREE WOW T-shirt.



Name: _____
Address: _____
City: _____
State: _____
Zip: _____ G00202
E-mail: _____

US \$49.95 Canadian \$79.95 Foreign/1st Class \$97.95

Check Money Order Visa MasterCard Bill Me

Card# _____ Exp. date _____

Mail order to: **WOW Magazine**, P.O. Box 500, Missouri City, TX 77459

or fax order to: **281-261-5999**

WOW Magazine is a registered trademark of H&S Media, Inc.

ACCLAIM® LIMITED WARRANTY

ACCLAIM warrants to the original purchaser only of this ACCLAIM software product that the medium on which this software program is recorded is free from defects in materials and workmanship for a period of ninety (90) days from the date of purchase. This ACCLAIM software program is sold "as is," without express or implied warranty of any kind, and ACCLAIM is not liable for any losses or damages of any kind resulting from use of this program. ACCLAIM agrees for a period of ninety (90) days to either repair or replace, at its option, free of charge, any ACCLAIM software product, postage paid, with proof of date of purchase, at its Factory Service Center. Replacement of the software product, free of charge to the original purchaser (except for the cost of returning the software product) is the full extent of our liability.

This warranty is not applicable to normal wear and tear. This warranty shall not be applicable and shall be void if the defect in the ACCLAIM software product has arisen through abuse, unreasonable use, mistreatment or neglect. THIS WARRANTY IS IN LIEU OF ALL OTHER WARRANTIES AND NO OTHER REPRESENTATIONS OR CLAIMS OF ANY NATURE SHALL BE BINDING ON OR OBLIGATE ACCLAIM. ANY IMPLIED WARRANTIES APPLICABLE TO THIS SOFTWARE PRODUCT, INCLUDING WARRANTIES OF MERCHANTABILITY AND FITNESS FOR A PARTICULAR PURPOSE, ARE LIMITED TO THE NINETY (90) DAY PERIOD DESCRIBED ABOVE. IN NO EVENT WILL ACCLAIM BE LIABLE FOR ANY SPECIAL, INCIDENTAL, OR CONSEQUENTIAL DAMAGES RESULTING FROM POSSESSION, USE OR MALFUNCTION OF THIS ACCLAIM SOFTWARE PRODUCT.

Some states do not allow limitations as to how long an implied warranty lasts and/or exclusions or limitations of incidental or consequential damages so the above limitations and/or exclusions of liability may not apply to you. This warranty gives you specific rights, and you may also have other rights which vary from state to state.

This warranty shall not be applicable to the extent that any provision of this warranty is prohibited by any federal, state or municipal law which cannot be pre-empted.

Repairs/Service after Expiration of Warranty—If your software product requires repair after expiration of the 90-day Limited Warranty Period, you may contact the Consumer Service Department at the number listed below. You will be advised of the estimated cost of repair and the shipping instructions.

Acclaim Hotline/Consumer Service Department (516) 759-7800

ECW is a trademark of HHG, Corp. ECW Hardcore Revolution™ and Acclaim® & © 2000 Acclaim Entertainment, Inc. All Rights Reserved. Developed by Acclaim Studios Salt Lake City. All Rights Reserved. Jeremy McGrath SUPERCROSS™ 2000 and Acclaim® & © 2000 Acclaim Entertainment, Inc. All Rights Reserved. Developed by Acclaim Studios Salt Lake City. All Rights Reserved. Marketed by Acclaim. Distributed by Acclaim Distribution, Inc., One Acclaim Plaza, Glen Cove, NY 11542-2777.

ESRB RATING

www.acclaim.com

This product has been rated by the Entertainment Software Rating Board. For information about the ESRB rating, or to comment about the appropriateness of the rating, please contact the ESRB at 1-800-771-3772.

Sega is registered in the US Patent and Trademark Office. Sega Dreamcast and the Dreamcast Swirl, are trademarks of SEGA. Sega of America, P.O. Box 7639, San Francisco, CA 94120. All Rights Reserved. Programmed in Japan. Made and printed in the USA. WARNING: Operates only with NTSC televisions and Sega Dreamcast systems purchased in North and South America (except Argentina, Paraguay and Uruguay). Will not operate with any other televisions or Sega Dreamcast systems. Product covered under one or more of the following U.S. Patents: 5,460,374; 5,525,770; 5,527,895; 5,688,173; 4,442,488; 4,454,594; 4,462,076; Re. 35,839, Japanese Patent No.2870538, (Patents pending in U.S. and other countries); Canada Patent No. 1,163,276. The ratings icon is a trademark of the Interactive Digital Software Association.