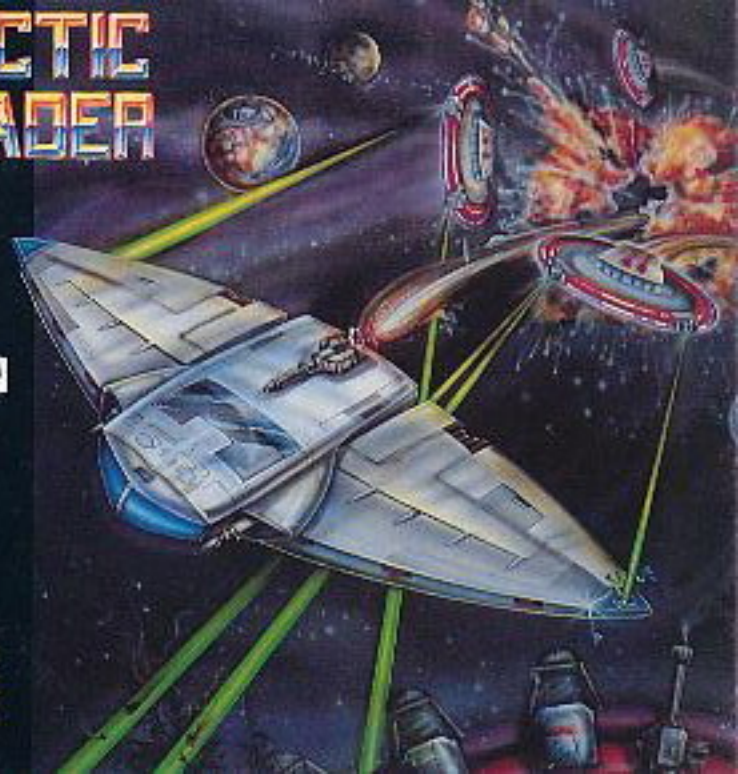


**BUNCH  
GAMES**

**GALACTIC  
CRUSADE**

**INSTRUCTION  
MANUAL**

**BUNCH  
GAMES**



## GALACTIC CRUSADER CONTROL SUMMARY

### Controls

- Control Pad Arrows:** Move the Star Ship in the indicated directions.  
**Button A:** Causes the Star Ship to fire.  
**Button B:** Releases or reattaches firing devices to the Star Ship.  
**Select Button:** Moves the cursor to select options on the screen.  
**Start Button:** Starts the game. Also freezes the game.

### Special Objects

- Device Carrier:** Attach Star Ship to activate firing devices.  
**Game Device:** Gives you an extra line of firing.  
**Photon Device:** Gives you two extra lines of firing.  
**Pulsar Capsule:** Fires pulsar waves.  
**Plasma Capsule:** Fires plasma blasts.  
**Corkscrew Capsule:** Fires in corkscrew pattern.  
**Star Gate:** Gives you one additional Star Ship.

## GALACTIC CRUSADER

### I. INTRODUCTION



Your star ship is alive - a metamorphic creature that can transform from a huge flying insect into a metallic destroyer.



Penetrate squadron after squadron of bizarre alien fortifications! March onward to a final confrontation against an all powerful enemy.



Copyright ©1990 Bunch Games, Inc.

Copyright ©1990 Chin Chen Enterprise Co., LTD.

## PRECAUTIONS

- 1) Store at room temperature. Do not subject to environmental extremes.
- 2) Always ensure that power is off before inserting or removing the cartridge from the Nintendo® system.
- 3) Keep contacts clean (do not touch them and store the cartridge in its box when not in use).
- 4) Do not try to open or disassemble the cartridge.
- 5) Do not sit too close to your television.
- 6) Do not clean the cartridge with chemical agents.

Nintendo, Nintendo Entertainment System and NES are trademarks of Nintendo of America, Inc.

## II. GAME CONTROL

**Control Pad  
Arrows:**

Move the Star Ship in the indicated directions.

**Button A:**

Causes both the Star Ship and the firing device to fire.

**Button B:**

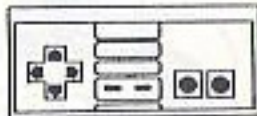
After the Star Ship comes into contact with the Device Carrier, Button B can be used to attach or detach firing devices to and from the Star Ship's front or rear. (To attach: Push Button B to enable magnetization of firing device towards the Star Ship and move the Star Ship behind or in front of the firing device before contact. To detach: Simply push Button B to launch firing device.)

**Select Button:**

Moves the cursor to select options on the screen.

**Start Button:**

Starts the game. The Start Button is also used to freeze the game during play.



### III. GAME MECHANICS



LIFE FORCE GENERATOR

You are the captain of a metamorphic Star Ship. Loaded with power and determination, you slice through enemy formations. Every time the Star Ship sustains any damage, it will transform into a different ship. Be careful though, for your Star Ship will explode when its metamorphic capabilities run out.

At the end of each world, you will face a sizable enemy. Your best bet is to reserve your metamorphic abilities and to obtain proper weapons before these confrontations.

**Life Force Generator:** Brings you full metamorphic power.



STAR GATE

**Star Gate:** You will earn an additional ship by going through this gate.

### IV. FIRING DEVICES



DEVICE CARRIER



GAMA DEVICE



PHOTON DEVICE

There are many helpful devices which you can use along the way. The most potent of them are the firing devices. To obtain these devices, you must search and connect with the device carrier. Firing devices give you a lot of added power and there are several ways to use them. As a detached firing station, it can break up enemy formations before they reach your ship. As an attached firing device it gives you concentrated firing power. If you learn how to attach the same device behind your ship, the device fires at enemy ships approaching from the rear.

**Device Carrier:** Attach Star Ship to activate firing devices.

**Gama Device:** Gives you an extra line of firing.

**Photon Device:** Gives you two extra lines of firing.

## V. WEAPON CAPSULES



PULSAR CAPSULE



PLASMA CAPSULE



CORKSCREW  
CAPSULE

Weapon Capsules can be a powerful addition to your Star Ship if you can identify the preferred capsules.

**Pulsar Capsule:** Fires pulsar waves.

**Plasma Capsule:** Fires plasma blasts.

**Corkscrew Capsule:** Fires in corkscrew pattern.

## VI. CARRIER GUARDS

These enemies are often found near Device Carriers.



MEGA POD



JELLY BELL



CRYSTAL METEOR



FUNGUSTONE

## VII. ENEMIES



MOLECULATRON



SPACE CORAL



URCHIN CRAFT



SHELLY BELL

VII. ENEMIES (Continued)



POISONOUS TICK



DRAGON WASP



NERPHTRON



PINCH WALKER



NEUROCUS



CORROSIVE SPIDER



MEGA FLY



SHELLED CREEPER



HERMIT BELL

VIII. BOSSES



CUBICUS



GOROUS



SPIROUS



DRAGON KING

**Cubicus:** Watch out for its hydraulic extensions!

**Gorous:** Home to a band of blood sucking bats.

**Spirous:** Its long arms can easily locate and destroy your ship.

**Dragon King:** One burning breath will burn your ship to a crisp!

## COMPLIANCE WITH FCC REGULATIONS

This equipment generates and uses radio frequency energy and if not installed and used properly, that is, in accordance with the manufacturer's instructions, may cause interference to radio and television reception. It has been type tested and found to comply with the limits for a Class B computing device in accordance with the specifications in Subpart J of Part 15 of FCC Rules, which are designed to provide reasonable protection against such interference in a residential installation. If this equipment does cause interference to radio or television reception, which can be determined by turning the equipment off and on, the user is encouraged to try to correct the interference by one or more of the following measures:

- Reorient the receiving antenna.
- Relocate the NES® with respect to the receiver.
- Move the NES® away from the receiver.
- Plug the NES® into a different outlet so that NES® and receiver are on different circuits.

If necessary, the user should consult the dealer or an experienced radio/television technician for additional suggestions.

The user may find the following booklet prepared by the Federal Communications Commission helpful: HOW TO IDENTIFY AND RESOLVE RADIO-TV INTERFERENCE PROBLEMS. This booklet is available from the U.S. Government Printing Office, Washington, D.C. 20402, Stock No. 004-000-00345-4.

Note: NES® is the abbreviation for Nintendo Entertainment System®

## 90 DAY LIMITED WARRANTY

Bunch Games, Inc. (MANUFACTURER) warrants to the original purchaser that this Bunch Games Game Cartridge (CARTRIDGE) shall be free from defects in material and workmanship for a period of 90 days from the date of purchase. If a defect covered by this warranty occurs within the warranty period, Bunch Games will at its option repair or replace the defective CARTRIDGE free of charge (except for the cost of returning the CARTRIDGE).

### TO RECEIVE THIS WARRANTY SERVICE

1. Simply pack your CARTRIDGE together with the original dated proof of purchase (Sales Slip) and circle the item.
2. Include a note stating the nature of the problem or defect.
3. Return your package freight prepaid, at your own risk of shipping damage, within the 90-day warranty period to: BUNCH GAMES, INC. CUSTOMER SERVICE DEPARTMENT 1442 IRVINE BLVD., SUITE 134, TUSTIN, CA 92680.

This warranty shall not apply if the CARTRIDGE

has been damaged by negligence, accident, modification, tampering, unreasonable use, or by other causes unrelated to defective materials or workmanship.

### LIMITATIONS

IF APPLICABLE, ALL IMPLIED WARRANTIES, INCLUDING WARRANTIES OF MERCHANTABILITY AND FITNESS FOR A PARTICULAR PURPOSE, ARE HEREBY LIMITED TO 90 DAYS FROM THE DATE OF PURCHASE AND ARE SUBJECT TO THE CONDITIONS SET FORTH HEREIN. In no event shall Bunch Games be held liable for incidental and/or consequential damages for the breach of any express or implied warranties. The provisions of this warranty are valid in the United States only. Some states do not allow limitations on how long an implied warranty lasts or exclusions of consequential or incidental damages, so the above limitations and exclusions may not apply to you. This warranty gives you specific legal rights, and you may have other rights which vary from state to state.



NOTES

---



---



---



---



---



---

GALACTIC CRUSADER EVALUATION SHEET

NAME: \_\_\_\_\_ AGE: \_\_\_\_\_ SEX: \_\_\_\_\_

ADDRESS: \_\_\_\_\_

DATE: \_\_\_\_/\_\_\_\_/\_\_\_\_ PHONE # (Optional): (\_\_\_\_) \_\_\_\_\_-\_\_\_\_\_

GRADING SCALE:      1:WORST    2:BAD    3:AVERAGE    4:GOOD    5:EXCELLENT

- |  |   |   |   |   |   |
|--|---|---|---|---|---|
| 1) GAME'S OVERALL ENTERTAINMENT VALUE                    | 1 | 2 | 3 | 4 | 5 |
| 2) COMPARED WITH GAMES THAT YOU PLAY REGULARLY           | 1 | 2 | 3 | 4 | 5 |
| 3) COMPARED WITH ALL EXISTING GAMES                      | 1 | 2 | 3 | 4 | 5 |
| 4) VARIETY (ENEMIES, WORLDS, TRICKS, WEAPONS)            | 1 | 2 | 3 | 4 | 5 |
| 5) GRAPHICS (COLOR, DESIGN, ANIMATION)                   | 1 | 2 | 3 | 4 | 5 |
| 6) SOUND EFFECTS (BACKGROUND MUSIC, ANIMATION)           | 1 | 2 | 3 | 4 | 5 |
| 7) DIFFICULTY LEVEL (1: TOO EASY . . . 5: TOO DIFFICULT) | 1 | 2 | 3 | 4 | 5 |
| 8) FLAWS OR PROBLEMS (1: NONE . . . 5: TOO MANY)         | 1 | 2 | 3 | 4 | 5 |

PLACE  
STAMP  
HERE

BUNCH GAMES, INC.  
1442 IRVINE BLVD., SUITE 134  
TUSTIN, CA 92680