



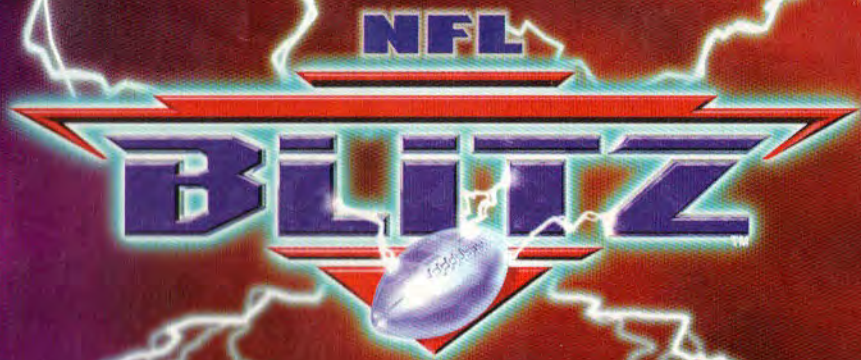
MIDWAY HOME ENTERTAINMENT INC.

P.O. Box 2097 Corsicana, TX 75151

www.midway.com

Game © 1997 Midway Games Inc. All rights reserved. BLITZ and MIDWAY are trademarks of Midway Games Inc. © 1997 NFLP. Team names and logos are trademarks of the teams indicated. The NFL shield, Super Bowl and Pro Bowl are trademarks of the National Football League. Officially Licensed Product of Players Inc. Players Inc. logo is a registered trademark of the NFL Players. Distributed by Midway Home Entertainment Inc.

PRINTED IN U.S.A.



# INSTRUCTION MANUAL



EVERYONE



PLAYERS

MIDWAY





# WARNING!

PLEASE READ THE ENCLOSED CONSUMER INFORMATION AND PRECAUTIONS BOOKLET CAREFULLY BEFORE USING YOUR NINTENDO® HARDWARE SYSTEM, GAME PAK OR ACCESSORY. THIS BOOKLET CONTAINS IMPORTANT SAFETY INFORMATION.

THIS PRODUCT HAS BEEN RATED BY THE ENTERTAINMENT SOFTWARE RATING BOARD. FOR INFORMATION ABOUT THE ESRB RATING, OR TO COMMENT ABOUT THE APPROPRIATENESS OF THE RATING, PLEASE CONTACT THE ESRB AT 1-800-771-3772

This game is compatible with the Rumble Pak and Controller Pak accessories. Before using the accessories, please read the Rumble Pak and Controller Pak accessory instruction booklets carefully. Follow on-screen instructions to determine when you should insert or remove the Rumble Pak and Controller Pak accessories.

**Midway Customer Support**  
 903 874-5092  
 10:00am - 6:30pm  
 Central Time  
 Monday - Friday

**AUTOMATED HELP LINE OPEN 24 HOURS A DAY**



THIS OFFICIAL SEAL IS YOUR ASSURANCE THAT NINTENDO HAS APPROVED THE QUALITY OF THIS PRODUCT. ALWAYS LOOK FOR THIS SEAL WHEN BUYING GAMES AND ACCESSORIES TO ENSURE COMPLETE COMPATIBILITY. ALL NINTENDO PRODUCTS ARE LICENSED BY SALE FOR USE ONLY WITH OTHER AUTHORIZED PRODUCTS BEARING THE OFFICIAL NINTENDO SEAL OF QUALITY.

LICENSED BY NINTENDO

NINTENDO, THE OFFICIAL SEAL, NINTENDO 64 AND THE 3-D "N" LOGO ARE TRADEMARKS OF NINTENDO OF AMERICA INC. ©1996 NINTENDO OF AMERICA, INC.

## TABLE OF CONTENTS

Getting Started .....	3
Control Stick Function .....	4
Controller .....	5
Default Controls .....	6
Main Menu .....	7
Play Editor .....	8 - 9
Season Play .....	10 - 11
Options .....	12 - 13
Entering a Name .....	14
Team Selection .....	15 - 16
On the Field .....	17
Play Selection .....	18
Time Out .....	19
Overtime .....	19
Stats .....	20
Special Controls .....	21 - 22
Tips & Rules .....	23 - 24
Your Records .....	25 - 26
Credits .....	27 - 28
Warranty .....	29 - 30

30 ▶

20 ▶

10 ▶

## GETTING STARTED

**WARNING: NEVER TRY TO INSERT OR REMOVE A GAME PAK WHEN THE POWER IS ON!**

- Turn the power OFF on your N64.
- Insert the Game Pak into the slot on the N64. Press firmly to lock the Game Pak in place.
- Turn the power switch ON. After the appearance of the title and legal screens, you may continue at any time by pressing **START**.



### CONTROLLER PAK MENU

Press and hold the **START Button** upon powering up or reset to access the Controller Pak Menu. This will allow you to view and delete saved information from a Nintendo 64 Controller Pak.

### USING THE RUMBLE PAK

Anytime you start a game, you will be prompted to insert your Rumble Pak at that time. If you are not using a Rumble Pak, press the **A Button** to move on.

#### REMEMBER

It is important to only switch your Rumble Pak and Controller Pak when prompted to do so.

09

## CONTROL STICK FUNCTION

The Nintendo 64 **Control Stick** uses an analog system to read the angles and directions of its movement. This allows precision control that is not possible using the conventional **Control Pad**.

When turning the Control Deck power **ON**, do not move the **Control Stick** from its neutral position on the controller.



If the **Control Stick** is held at an angled position (as shown in the picture on the left) when the power is turned **ON**, this position will be set as neutral. This will cause games using the **Control Stick** to operate incorrectly.



To reset the neutral position once the game has started, let go of the **Control Stick** so it can return to its center position (as shown in the picture on the left) then press **START** while holding down the **L** and **R Buttons**.

The **Control Stick** is a precision instrument, make sure not to spill liquids or place any foreign objects into it. If you need assistance, contact Nintendo Consumer Assistance at 1-800-255-3700 or your nearest Nintendo Authorized Repair Center.

3

4

< 10

< 20

< 30

< 40

50

40 >

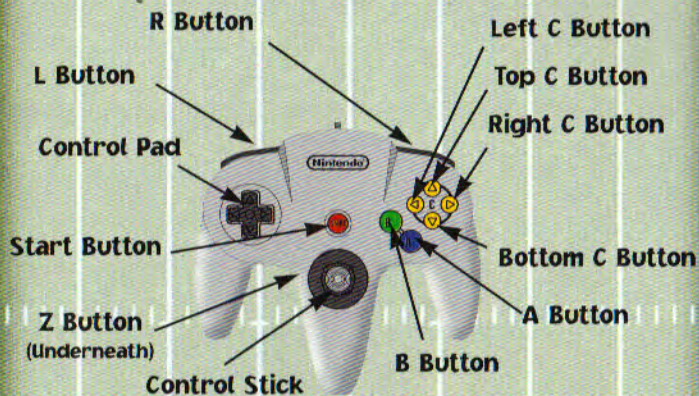
30 >

20 >

10 >

# CONTROLLER

Before you begin your game familiarize yourself with the Nintendo 64 controller.



## MENU SELECTIONS

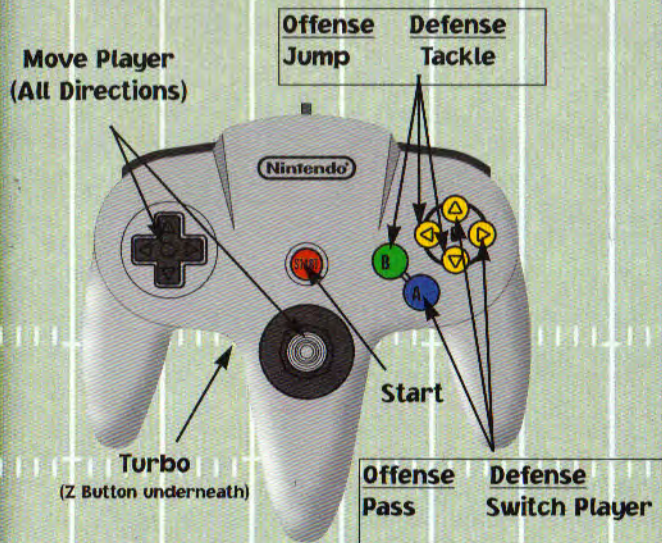
- Control Pad or Control Stick Up, Down, Left or Right to highlight or toggle options.
- Press the A Button to select options.
- Press the B Button to go back to a previous menu.

To Quit a game in progress, press **START** to pause the game. The Time Out Menu will appear. Select **Quit Game** or select **Resume Game** to return to your game.



# DEFAULT CONTROLS

## DEFAULT CONTROLLER CONFIGURATION



You can modify these default settings the way you want (see **Controller**, pg. 11, for more details).

## SAVING DATA TO A CONTROLLER PAK

Following each **Season** game, you'll be prompted to save data to your Controller Pak. Select **Yes** to do so. You'll be prompted to select a **Record Slot** to save your data to. Select a slot, then press the **A Button**. Your season will be saved until the next time you play.

## MAIN MENU

### ARCADE PLAY

Arcade game mode is like playing the arcade version of NFL Blitz. Players select a team and go at it.



### SEASON PLAY

The Season game mode allows you to play through the 1998-99 NFL season to the Super Bowl (see [Season Play](#), pg. 9-10). You must have a Controller Pak to play and save a season.

### PLAY EDITOR

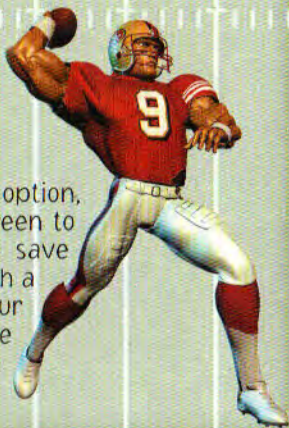
See next page.

### OPTIONS

See page 12.

#### NOTE:

When you select your play option, you'll go to the Enter Name Screen to enter the initials you want to save your personal game data to. With a [Controller Pak](#) inserted in your controller, you can save personalized statistics to the High Score table. See [Entering a Name](#), pg. 13



09

## PLAY EDITOR

### PLAY EDITOR

*NFL Blitz* includes this option which allows you to create your own plays. When you select this option you'll go to an Enter Name Screen to enter the name or initials you want to save your new plays to. When you're ready to play a game, just enter the same initials, and the new play(s) will be available in your playbook (next page).

Here's how to create your plays:

- 1 Select **Create/Edit** to view the available slots for your new play, then choose a slot.
- 2 Select **Name Play** to give it a name. Press the **Control Pad Up, Down, Left** or **Right** to select a character, then select **End** to accept the new name.
- 3 Select **Formation**. A Pop-up menu will appear with formation options. Select the formation you want.
- 4 Select **QB Position**. In the pop-up window, select the position you want your QB in. The formation displayed below will change as you select.



7

8

< 10

< 20

< 30

< 40

50

40 >

30 >

20 >

10 >

## PLAY EDITOR

5 Select **Receiver 1, 2** or **3** to set the positions and patterns you want them in. You can put them in traditional Receiver positions at the line of scrimmage or behind the QB in a Running Back position.

To set patterns, you'll first have to move your receiver into the position you want him to start, then press the **A Button**. Next, move your **Control Pad** or **Control Stick** to create his pattern. Press the **A Button** to view the options the receiver can make at that point. Select an option, then repeat the process until you've set the pattern you like.

When you're done editing plays, make sure to save them using the **Save** option. Select **Exit** to exit the Play Editor and return to the Main Menu.



< 10

< 20

< 30

< 40

50

40 >

30 >

20 >

10 >

09

## SEASON PLAY

### NEW SEASON

Create a new season and save it to your Controller Pak. You'll go to the Team Selection Screen (see **Team Selection**, pg. 14) to select the team you want to take to the Super Bowl. Only 1 player may play a season.

### LOAD SEASON

If you've already created a new season and saved it to your **Controller Pak**, you can load that season using this option. The game will read your **Controller Pak**, then display the saved season note. Select the note to load your saved season.

### PLAY WEEK (#)

This option will display the current week of your season. If your season has been created and you're ready to play a game select this option to begin playing.



10

# SEASON PLAY

## VIEW STATS

Statistics for your saved season are available for your review, as well as your team's Schedule and Season Standings. Select from these options:

## SCHEDULE

Your team's season schedule is displayed, as well as the schedule for the entire league. Use your Control Pad to scroll through the schedule. After your game is complete, final scores will appear next to all matchups.



## STANDINGS

As your season progresses, select this option to view the season standings for each of the NFL football conferences. Use your Control Pad to scroll through the standings.



## STATS

Statistics for your season can be reviewed using this option. Press your Control Pad Left or Right to scroll through the various categories.

09

# OPTIONS

## SYSTEM

System options include these 4 selections:

### SOUND

You can make volume adjustments to the game's **Music**, **Sound FX**, **Crowd** or **Announcer**. Just highlight the option you want to adjust, then press the **Control Pad Left** or **Right** to raise or lower the volume.

### SHIFT SCREEN

Select this option to adjust the position of the screen on your tv. After selecting the option, press the **Control Pad Up**, **Down**, **Left** or **Right** to move the screen.

### SIZE SCREEN

Resize the screen to fit your tv. After selecting the option, press the **Control Pad Up**, **Down**, **Left** or **Right** to resize the screen.

## CONTROLLER



To modify the controller the way you like, press the **Control Pad Up** or **Down** to select the function you want to change, then press the button you want to use for that function. You can apply up to 4 buttons to one function. The button selected will appear as you press it. Each button can be used for only one function. To remove a button from a function, press that same button again to toggle it off.

11

12

## OPTIONS

### GAME

Press the **Control Pad Left** or **Right** to make changes to the following game options:

### DIFFICULTY

Select one of these difficulty settings: **Easy**, **Medium** or **Hard**.

### QUARTER LENGTH

Change the length of the game's quarters. You can select **1**, **2**, **4** or **6** minute quarters.

### HELP BOXES

Turn the Help Boxes that appear before and during the game **ON** or **OFF**.

### PLAY TIMERS

Turn the play timers that appear as you select plays **ON** or **OFF**.

### SAVE

Once you have your option and controller settings the way you want them, select this option to save them to your **Controller Pak**.

### RESTORE

If you've saved your configuration to the **Controller Pak**, you can load the settings and quickly return your controls and game options to your previous settings.



09

## ENTERING A NAME

After you've selected a game mode, you'll be offered an opportunity to enter your name, so you can save your records to your **Controller Pak**.

To enter your name, press the **Control Pad Up, Down, Left** or **Right** to highlight a character; then press the **A Button** to select it. Repeat the process to select the letters of your choice.

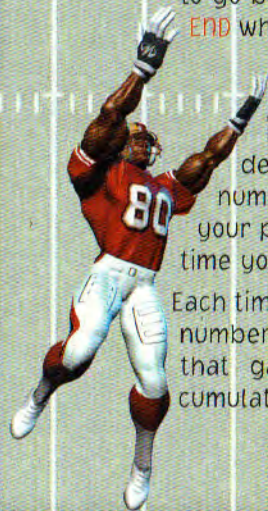
Select **SPC** to add a space between letters, select **DEL**

to go back and fix mistakes. Select **END** when you're finished.



The Enter Pin screen appears after you've entered your name. Use the same method described above to enter a pin number. Make sure you remember your pin, so you can enter it the next time you want to play.

Each time you enter your name and pin number before a game, new stats for that game will be added to your cumulative stats.



13

14

< 10

< 20

< 30

< 40

50

40 >

30 >

20 >

10 >



## TEAM SELECTION



Before you can begin destroying your opponent, you'll need to select a team. At the Team Selection Screen, press the **Control Pad Up** or **Down** to select a team, then press the **A Button** to select.

As you scroll through the teams, power ratings appear below the team window, displaying the strengths and weaknesses of the highlighted team.

After you select a team, you'll go to the Pre-Game Screen. To select a random team, hold the **Control Pad Left** then press the **Turbo Button**.

< 10

< 20

< 30

< 40

50

40 >

30 >

20 >

10 >

09

## TEAM SELECTION

### ENTERING CODES

After you've selected your teams, the Pre-Game Screen appears with icons at the bottom of the screen. Use the three action buttons to cycle the icons and enter codes, then press the **Control Pad** in any direction. You won't have long to enter the codes, so concentrate and get them right.



P1 P2 P3

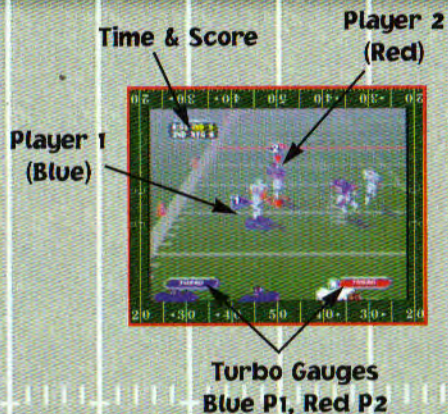
Position 1 is controlled pressing the **Turbo Button**, position 2 with **Jump/Tackle** and position 3 with **Pass/Change Player**.

### NOTE:

You can find codes in strategy guides, magazines, the internet or with a little experimenting on your part.

16

## ON THE FIELD



17

### TIME & SCORE

Keep an eye on the time in the game. It's easy to get caught up in the game and not pay attention. Since Player 2 always gets the kickoff following halftime, it's important to score before the half if you're Player 1.

### POSSESSION MARKERS

It's quite simple, Player 1 is blue, and Player 2 is red.

### TURBO GAUGES

As you use up your Turbo, the gauges diminish. The sooner you let go of the Turbo Button, the sooner it will regenerate. Don't hold down the button when you're out of Turbo.

< 10   < 20   < 30   < 40   50   40 >   30 >   20 >   10 >

19

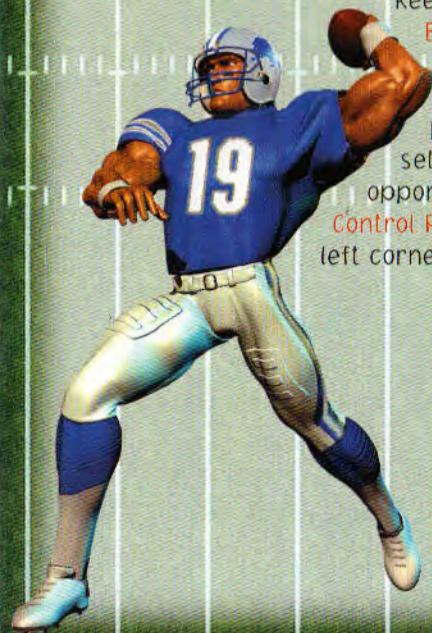
## PLAY SELECTION

To select plays during your game, press the Control Pad Up, Down, Left or Right to highlight a play, then press the Pass Button to select it.

On offense, press the Turbo Button to view more plays. If you created plays using the Play Editor,



keep pressing the Turbo Button until they are displayed. Press the Jump Button to flip a play. To hide your play selection from your opponent, quickly press the Control Pad Up twice in the top left corner of any page.



18

## TIME OUT

Press the **Start Button** at anytime during the game to view the Time Out Options. Select **Resume Game** to continue playing.

### OPTIONS

See **Options**, pg. 11-12, for details.

### QUIT GAME

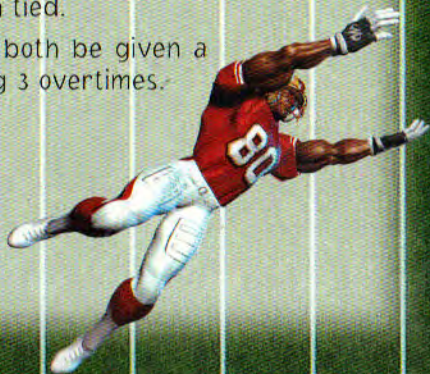
To quit a game in progress, select this option, then select **Yes**.



## OVERTIME

If your game is tied following regulation time, you'll go into overtime. In Arcade mode, you'll play up to 3 overtimes. If a winner isn't determined after 3 overtime quarters, you will finish tied.

In Season mode, you'll both be given a loss when tied following 3 overtimes.



< 10

< 20

< 30

< 40

50

40 >

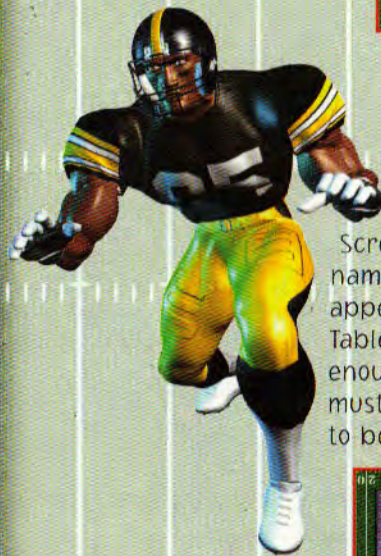
30 >

20 >

10 >

## STATS

Stats are displayed during Halftime and following the game. Compare your stats with your opponents to find where you need improvement.



If you entered a name at the Enter Name Screen (see pg. 13), your name will automatically appear on the High Score Table if you placed high enough in the rankings. You must play at least 3 games to be eligible for a ranking.



20

## SPECIAL CONTROLS

### BEFORE SNAP:

- Show player names ..... Turbo
- Move man in motion ..... Control Pad Left or Right before snap
- Man in motion into blocker ..... Jump + Pass
- Hike ball ..... Jump or Pass

### BEHIND THE LINE OF SCRIMMAGE:

- Pass the Ball ..... Control Pad toward receiver + Pass
- Hurdle ..... Jump
- High hurdle ..... Turbo + Jump
- Turbo run ..... Hold Turbo
- Spin move ..... Press Turbo twice
- Jump pass ..... Turbo + Jump + Pass
- Fast pass ..... Turbo + Pass
- Dive forward ..... Turbo + Press Jump twice



< 10

< 20

< 30

< 40

50

40 >

30 >

20 >

10 >

21

## SPECIAL CONTROLS

### OVER THE LINE OF SCRIMMAGE:

- Lateral back ..... Control Pad back to player + Pass
- Stiff arm ..... Turbo + Pass
- Hurdle ..... Jump
- High hurdle ..... Turbo + Jump
- Turbo run ..... Turbo
- Spin move ..... Press Turbo twice

### DEFENSE

- Tackle ..... Run into ball carrier
- Dive tackle ..... Jump
- Change player ..... Pass
- Turbo run ..... Turbo
- Intercept/swat ..... Jump
- Push ..... Turbo + Pass
- Power tackle ..... Turbo + Jump

### OTHER:

- Onside kick ..... Control Pad Up + Turbo + Jump + Pass
- Hide play cursor ..... Control Pad Up twice on upper left play on select screen



22

## TIPS & RULES

### RULES:

- To make a first down, you must gain 30 yards.
- The clock stops between each play.
- Long Field Goals and Punting may be attempted.
- Pass Interference is allowed and encouraged.
- No Rules! No Refs! No Mercy!

### HOW TO PASS:

- Push **Control Pad Left** to highlight the receiver the furthest left on the field, then press the **Pass Button**.
- Push **Control Pad Right** to highlight the receiver the furthest right on the field, then press the **Pass Button**.
- Push **Control Pad Up/Down** to highlight the receiver the in the center of the field, then press the **Pass Button**.



< 10 < 20 < 30 < 40 50 40 > 30 > 20 > 10 >

23

## TIPS & RULES

### GENERAL HINTS:

- Wait for a receiver to get open before passing to him.
- On Defense, use the **Change Player Button**, then press the **Tackle Button** to knock down the receiver just as he catches the ball to cause a bobble.
- Press **Change Player Button** to Control Nearest Defender
- Hold the **Turbo Button** to run faster up field
- **QB Jump Pass** - Run away from blitzing defenders, then press **Turbo + Jump**. While you're in the air, choose a receiver and press the **Pass Button**. You'll avoid QB sacks with this tactic.
- **Turbo Button Usage** - Use the **Turbo Button** to make your player run faster, jump higher and hit harder. Hard hits will cause the ball carrier to fumble more often. Use your turbo wisely.
- **Spin Move** - Quickly tap the **Turbo Button** to perform a spin move. Spin moves cause defenders to miss tackles. Of course, you must have some Turbo available to perform this move.
- **Stiff Arm** - While carrying the ball beyond the line of scrimmage, hold down **Turbo** then press the **Pass Button**. This will knock down a would be tackler.



24

# YOUR RECORDS

## PLAYER 1

## PLAYER 2

Name \_\_\_\_\_

Name \_\_\_\_\_

WINS - LOSSES

WINS - LOSSES

_____	-	_____
_____	-	_____
_____	-	_____
_____	-	_____
_____	-	_____
_____	-	_____
_____	-	_____
_____	-	_____
_____	-	_____
_____	-	_____
_____	-	_____
_____	-	_____
_____	-	_____
_____	-	_____
_____	-	_____
_____	-	_____
_____	-	_____
_____	-	_____
_____	-	_____
_____	-	_____
_____	-	_____
_____	-	_____
_____	-	_____

_____	-	_____
_____	-	_____
_____	-	_____
_____	-	_____
_____	-	_____
_____	-	_____
_____	-	_____
_____	-	_____
_____	-	_____
_____	-	_____
_____	-	_____
_____	-	_____
_____	-	_____
_____	-	_____
_____	-	_____
_____	-	_____
_____	-	_____
_____	-	_____
_____	-	_____
_____	-	_____
_____	-	_____
_____	-	_____

< 10

< 20

< 30

< 40

50

40 >

30 >

20 >

10 >

# YOUR RECORDS

## PLAYER 1

## PLAYER 2

Name \_\_\_\_\_

Name \_\_\_\_\_

WINS - LOSSES

WINS - LOSSES

_____	-	_____
_____	-	_____
_____	-	_____
_____	-	_____
_____	-	_____
_____	-	_____
_____	-	_____
_____	-	_____
_____	-	_____
_____	-	_____
_____	-	_____
_____	-	_____
_____	-	_____
_____	-	_____
_____	-	_____
_____	-	_____
_____	-	_____
_____	-	_____
_____	-	_____
_____	-	_____
_____	-	_____
_____	-	_____

_____	-	_____
_____	-	_____
_____	-	_____
_____	-	_____
_____	-	_____
_____	-	_____
_____	-	_____
_____	-	_____
_____	-	_____
_____	-	_____
_____	-	_____
_____	-	_____
_____	-	_____
_____	-	_____
_____	-	_____
_____	-	_____
_____	-	_____
_____	-	_____
_____	-	_____
_____	-	_____
_____	-	_____
_____	-	_____

## CREDITS

### MIDWAY CHICAGO DESIGN TEAM

#### **NINTENDO 64 TEAM**

Jim Anderson, Mark Anderson, Ed Jankowski,  
Jim Karm, Tod Papaleo & Bill Zielinski

#### **MIDWAY ARCADE TEAM**

Mark Turmell, Sal DiVita, Luis Mangubat, Jason  
Skiles, John Root, Dan Thompson, Jennifer Hedrick,  
Mike Lynch, Jim Gentile, Dan Forden  
& Mark Guidarelli

#### **PLAY TESTERS**

Brian LeBaron, Paulo Garcia, Mike Venikour  
& Eddie Ferrier

**DEDICATED TO**  
**THE MEMORY OF**  
**FRANK DiVITA & ART TIANIS**  
**THEY FOUGHT THE GOOD FIGHT.**

09

## CREDITS

### MIDWAY HOME TEAM

#### **PRODUCER**

Michael Gottlieb

#### **ASSOCIATE PRODUCER**

Curtis Cherrington

#### **ASSISTANT PRODUCER**

Matthew Vella

#### **TECHNICAL DIRECTOR**

Scott Maxwell

#### **PRINT DESIGN & PRODUCTION**

Debra Austin, Gary Gonzales, Jon Mongelluzzo,  
Chris Mowry, Erin Shems, Chris Vine & Dave Young

#### **TEST MANAGER**

Rob Sablan

#### **LEAD PRODUCT ANALYSTS**

Jeff Greenhut & Jason O'Brien

#### **PRODUCT ANALYSTS**

Nick Bihary, BISHOP, Scott Lanigan & Ed Mobley

#### **ADDITIONAL TESTING**

Armando Cortez, Jason Shigenaka, Sheita Julaton,  
Alex Salcedo, Dan Wagner, Steve Montano, J. Lazaro,  
Seth McNew & Nathan "Dawg" Blomberg

#### **SPECIAL THANKS**

Kordell Stewart, Gene Goldberg & the NFL,  
LaShun Lawson & the NFLPlayers Inc., Peter Raskin &  
Deborah Fulton

27

28

< 10

< 20

< 30

< 40

50

40 >

30 >

20 >

10 >

## WARRANTY

MIDWAY HOME ENTERTAINMENT INC. warrants to the original purchaser of this Midway Home Entertainment Inc. software product that the medium on which this computer program is recorded is free from defects in materials and workmanship for a period of ninety (90) days from the date of purchase. This Midway Home Entertainment Inc. software program is sold "as is," without express or implied warranty damages of any kind, and Midway Home Entertainment Inc. is not liable for any losses or damages of any kind resulting from the use of this program. Midway Home Entertainment Inc. agrees for a period of ninety (90) days to either repair or replace, at its option, free of charge, any Midway Home Entertainment Inc. software product, postage paid, with proof of purchase, at its Factory Service Center.

This warranty is not applicable to normal wear and tear. This warranty shall not be applicable and shall be void if the defect in the Midway Home Entertainment Inc. software product has arisen through abuse, unreasonable use, mistreatment or neglect. THIS WARRANTY IS IN LIEU OF ALL OTHER WARRANTIES AND NO OTHER REPRESENTATIONS OR CLAIMS OF ANY NATURE SHALL BE BINDING ON OR OBLIGATE MIDWAY HOME ENTERTAINMENT INC. ANY IMPLIED WARRANTIES APPLICABLE TO THIS SOFTWARE PRODUCT, INCLUDING WARRANTIES OF MERCHANTABILITY AND FITNESS FOR A PARTICULAR PURPOSE, ARE LIMITED TO THE NINETY (90) DAY PERIOD DESCRIBED ABOVE. IN NO EVENT WILL MIDWAY HOME ENTERTAINMENT INC. BE LIABLE FOR ANY SPECIAL, INCIDENTAL, OR CONSEQUENTIAL DAMAGES RESULTING FROM POSSESSION, USE OR MALFUNCTION OF THIS MIDWAY HOME ENTERTAINMENT INC. SOFTWARE PRODUCT.

Some states do not allow limitations as to how long an implied warranty lasts and/or exclusions or limitations of incidental or consequential damages so the above limitations and/or exclusions of liability may not apply to you. This warranty gives you specific rights, and you may also have other rights which vary from state to state.

## WARRANTY



Midway Home Entertainment Inc.  
P.O. Box 2097  
Corsicana, TX 75151-2097  
[www.midway.com](http://www.midway.com)

MIDWAY CUSTOMER SUPPORT  
903 874-5092  
10:00AM - 6:30PM / CENTRAL TIME  
MONDAY - FRIDAY  
AUTOMATED HELP LINE OPEN 24 HOURS A DAY

29

30

◀ 10    ▶ 20    ▶ 30    ▶ 40    50    40 ▶    30 ▶    20 ▶    10 ▶