



TEEN TITANS™

EVERYONE 10+
TM
E
10+
CONTENT RATED BY
ESRB

EmuMovies
INSTRUCTION BOOKLET



PLEASE CAREFULLY READ THE SEPARATE HEALTH AND SAFETY PRECAUTIONS BOOKLET INCLUDED WITH THIS PRODUCT BEFORE USING YOUR NINTENDO® HARDWARE SYSTEM, GAME DISC OR ACCESSORY. THIS BOOKLET CONTAINS IMPORTANT HEALTH AND SAFETY INFORMATION.

IMPORTANT SAFETY INFORMATION: READ THE FOLLOWING WARNINGS BEFORE YOU OR YOUR CHILD PLAY VIDEO GAMES

⚠ WARNING - Seizures

- Some people (about 1 in 4000) may have seizures or blackouts triggered by light flashes or patterns, such as while watching TV or playing video games, even if they have never had a seizure before.
- Anyone who has had a seizure, loss of awareness, or other symptom linked to an epileptic condition should consult a doctor before playing a video game.
- Parents should watch when their children play video games. Stop playing and consult a doctor if you or your child have any of the following symptoms:

Convulsions	Eye or muscle twitching	Loss of awareness
Altered vision	Involuntary movements	Disorientation

To reduce the likelihood of a seizure when playing video games:

1. Sit or stand as far from the screen as possible.
2. Play video games on the smallest available television screen.
3. Do not play if you are tired or need sleep.
4. Play in a well-lit room.
5. Take a 10 to 15 minute break every hour.

⚠ WARNING - Repetitive Motion Injuries and Eyestrain

Playing video games can make your muscles, joints, skin or eyes hurt after a few hours. Follow these instructions to avoid problems such as tendinitis, carpal tunnel syndrome, skin irritation or eyestrain:

- Avoid excessive play. It is recommended that parents monitor their children for appropriate play.
 - Take a 10 to 15 minute break every hour, even if you don't think you need it.
 - If your hands, wrists, arms or eyes become tired or sore while playing, stop and rest them for several hours before playing again.
- If you continue to have sore hands, wrists, arms or eyes during or after play, stop playing and see a doctor.

⚠ WARNING - Electric Shock

To avoid electric shock when you use this system:

- Do not use the Nintendo GameCube during a lightning storm. There may be a risk of electric shock from lightning.
- Use only the AC adapter that comes with your system.
- Do not use the AC adapter if it has damaged, split or broken cords or wires.
- Make sure that the AC adapter cord is fully inserted into the wall outlet or extension cord.
- Always carefully disconnect all plugs by pulling on the plug and not on the cord. Make sure the Nintendo GameCube power switch is turned OFF before removing.

⚠ CAUTION - Motion Sickness

Playing video games can cause motion sickness. If you or your child feel dizzy or nauseous when playing video games with this system, stop playing and rest. Do not drive or engage in other demanding activity until you feel better.

⚠ CAUTION - Laser Device

The Nintendo GameCube is a Class I laser product. Do not attempt to disassemble the Nintendo GameCube. Refer servicing to qualified personnel only.

Caution - Use of controls or adjustments or procedures other than those specified herein may result in hazardous radiation exposure.

CONTROLLER NEUTRAL POSITION RESET

If the L or R Buttons are pressed or the Control Stick or C Stick are moved out of neutral position when the power is turned ON, those positions will be set as the neutral position, causing incorrect game control during game play.

To reset the controller, release all buttons and sticks to allow them to return to the correct neutral position, then hold down the X, Y and START/PAUSE Buttons simultaneously for 3 seconds.



The official seal is your assurance that this product is licensed or manufactured by Nintendo. Always look for this seal when buying video game systems, accessories, games and related products.



Nintendo does not license the sale or use of products without the Official Nintendo Seal.



THIS GAME SUPPORTS SIMULTANEOUS GAME PLAY WITH ONE, TWO, THREE OR FOUR PLAYERS AND CONTROLLERS.



THIS GAME REQUIRES A MEMORY CARD FOR SAVING GAME PROGRESS, SETTINGS OR STATISTICS.

Important Legal Information

Copying of any video game for any Nintendo system is illegal and is strictly prohibited by domestic and international intellectual property laws. "Back-up" or "archival" copies are not authorized and are not necessary to protect your software. Violators will be prosecuted.

This video game is not designed for use with any unauthorized copying device or any unlicensed accessory. Use of any such device will invalidate your Nintendo product warranty. Nintendo (and/or any Nintendo licensee or distributor) is not responsible for any damage or loss caused by the use of any such device. If use of such device causes your game to stop operating, disconnect the device carefully to avoid damage and resume normal game play. If your game ceases to operate and you have no device attached to it, please contact the game publisher's "Technical Support" or "Customer Service" department.

The contents of this notice do not interfere with your statutory rights.

This booklet and other printed materials accompanying this game are protected by domestic and international intellectual property laws.

Rev-D (L)



DC LOGO, TEEN TITANS and all related characters and elements are trademarks of and © DC Comics.

WBIE LOGO: TM & © Warner Bros. Entertainment Inc. (s06)

TEEN TITANS software © 2006 THQ Inc. Developed by Artificial Mind & Movement Inc. Artificial Mind & Movement and it's logo are trademarks of Artificial Mind & Movement Inc. THQ and the THQ logo are trademarks and/or registered trademarks of THQ Inc. All Rights Reserved. All other trademarks, logos and copyrights are property of their respective owners.

LICENSED BY



NINTENDO, NINTENDO GAMECUBE AND THE OFFICIAL SEAL ARE TRADEMARKS OF NINTENDO. © 2001 NINTENDO. ALL RIGHTS RESERVED.

TABLE OF CONTENTS

- Controls 03
- Calling All Teen Titans! 04
- Main Menu 05
 - Story Mode 05
 - Master of Games 05
 - Options 05
- Pause Menu 06
- On-Screen Display 07
- Saving the Game 08
- Switching Titans 08
- Jumping 08
- Picking Up & Throwing Objects 09
- Combat 10
 - Titan Specific Attacks 10
 - Team Attacks 16
- Power-Ups & Collectibles 17
- Points, Upgrading Titans & the Stats Screen ... 20
- Credits 21
- Limited Warranty 31

TEEN TITANS™



CONTROLS

L Button:
Pick Up/Throw
(use the left thumbstick to direct your throw)

Control Stick:
Move Titan

Start:
Access Pause Menu/
Enter a multi-player
Story Mode game
(for players 2-4)

Control Pad L/R:
Press to switch
Titans

R Button:
Tap and hold to block attacks*

Z Button:
Exit a multi-player
Story Mode game
(for players 2-4)

Y Button:
Strong Attack
(tap or hold to charge)

X Button:
Special
Attack
(tap or hold to charge)

A Button:
Fast Attack
(tap or hold to charge)

B Button:
Jump

C Stick:
Adjust Camera

Basic Combos

A, A, Y

A, A, X

A, A, B

A, Y, A (Titan Super Move!)

NOTE: Only the first combo is available at the start of the game. The others are unlocked through gameplay.



CALLING ALL TEEN TITANS!

An unexplained videogame has been sent to Titan Tower and it stars...the **Teen Titans**?! When they turn on the game, strange things begin to happen. Is the new game “playing” the Titans or has a mysterious villain breached their defenses and taken control of our heroes? Play as **Robin**, **Starfire**, **Beast Boy**, **Cyborg** and **Raven** in a thrilling adventure that threatens to wipe out the Titans for good!



MAIN MENU

Choose from the following at the Main Menu:

Story Mode

Start or continue your adventure here—either alone or with up to three friends—by choosing **New Game** or **Load Game**. If you choose **New Game**, you will be asked whether you want to **Create a New Save Game** file. Choose **Yes** or **No** to proceed. Then choose your **Difficulty Level**—**Easy**, **Medium** or **Hard**. Choosing **Load Game** will bring you to the memory card manager so you can pick your saved game file.

Master of Games

Battle it out against the computer or with up to three other players in **Master of Games Mode**! Choose who you fight as and who you fight against. On the **Character Select** screen, use the **Control Pad** to cycle through the character options and press the **B Button** to make a choice. (Whoever selects a character first will play as that character, but no two players can play as the same character.) Make your arena choice next by pressing the **B Button**. Remember, you can unlock additional characters and arenas by playing through the **Story Mode**!

Options

Choose from the following at the **Options Menu**:

Settings: Adjust **Music Volume**, **SFX Volume**, **Voice Volume** and **Nintendo GameCube Controller Rumble Feature ON/OFF**.

Controls: Display complete controller diagram.

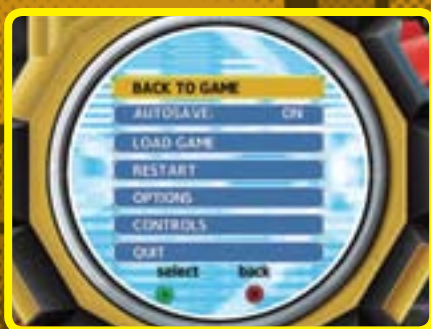
Extras: View bonus movies, unlocked artwork and other goodies!

Credits: Check out the super hero team that brought you **Teen Titans**!

PAUSE MENU

Press **Start** during play to bring up the Pause Menu where you can choose from:

- **Back to Game:** Return to the game in progress.
- **Auto Save:** Turn automatic save feature ON/OFF.
- **Load Game:** Load a previously saved game from the Memory Card.
- **Restart:** Start playing from the beginning of the level.
- **Options:** Adjust Music Volume, SFX Volume, Voice Volume and the Controller Rumble feature ON/OFF.
- **Controls:** Display complete Controller diagram.
- **Quit:** Exit the game and return to the Main Menu.



ON-SCREEN DISPLAY

The On-Screen Display shows important information, so keep an eye on it as you play the game.

- **Character:** Shows the current Teen Titan you are playing. The character icon will change each time you change Titans. The icon will also change into a super-deformed face when your character is low on energy, charges up attacks or takes damage.
Note: Computer-controlled Titans do not appear on the display.
- **Energy Meter:** Shows available energy. When your energy meter is empty, your Titan is knocked out for a few seconds.
- **Charged Attack Meter:** The available charge for any charged attacks.
- **Boss Energy Meter:** Tells you how close you are to beating the boss.
- **Continues:** Shows how many character continues remain. Every time your Titan is knocked out, you lose a continue. When the meter shows zero, the next knockout means mission failure.
- **Player Indicator:** Designates current players (P1=Player 1, P2=Player 2, P3=Player 3 and P4=Player 4).



SAVING THE GAME

Teen Titans autosaves after every completed level. To make sure you can start playing again where you left off, make sure you **Create A Saved Game File** at the Main Menu. Teen Titans requires 1 block on your Nintendo GameCube Memory Card.

SWITCHING TITANS

You can swap Titans at any time by pressing left or right on the **Control Pad**. The team cycles in this order: Robin, Raven, Cyborg, Starfire and Beast Boy. The on-screen character icon will change to show each Titan as you cycle through. Whether you are playing alone or with friends, every Titan is playable so long as that character is not knocked out or being played by another player.

Note: If the next Titan in order is knocked out, you just skip to the Titan that follows.

Each Titan has a unique set of moves, abilities and strengths, so some Titans are more useful than others in certain situations. The Titans can also work together to perform team attacks, giving you five times the super hero power to defeat enemies! (See Team Attacks on page 16 for more information.)

JUMPING

Your Titan will jump when you press the **B Button** (unless he/she is knocked out). You can also attack and jump at the same time to launch even more combos! (See Combat on page 10 for more information.)

Note: When Beast Boy jumps, he transforms!

PICKING UP & THROWING OBJECTS

The **L Button** has two main functions: press it once to pick up a nearby object and press it again to throw the object. Use the **Control Stick** to hurl an enemy or object in a particular direction. The Titans can also walk with an object before throwing it. Some thrown objects will explode or spill on impact; when you discover these, be sure to use them to your advantage during combat!

Note: Hitting an enemy three times in quick succession will stun him. When an enemy is stunned, that's the perfect time to pick him up and hurl him into something to finish him off!



COMBAT

There are three main attack buttons in Teen Titans:

- **A Button** = a fast but weaker attack
- **Y Button** = a strong but slower attack
- **X Button** = a special attack that reflects each Titan's personality and powers


Tapping an attack button launches a quick, explosive attack. **Hold-ing down** an attack button lets you unleash a spectacular charged attack. With the proper timing, these attacks can also be linked to create basic and advanced combos that build up your Charged Attack Meter and increase your point total. You can combine attacks with jumps to build more intricate combo strings too!

Titan Specific Attacks

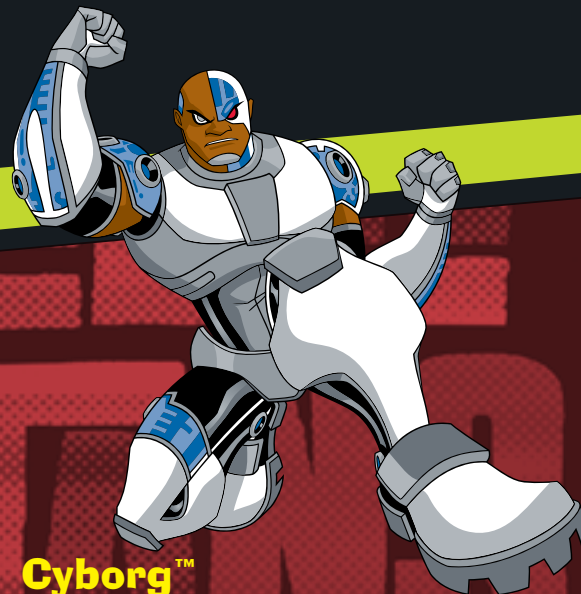
Each Titan has a series of six attacks that are available at the start of the game, and a spectacular seventh attack you can unlock by finding the hidden full-screen attack power-up! In addition to the attacks listed on the following character pages, each character also has a wide range of additional combos you will earn through game play progress.

Robin™

The leader of the Teen Titans. With his martial arts, acrobatic speed and a utility belt full of gadgets, he can take down bad guys in a heartbeat! Robin's fast attacks and excellent melee skills let him pulverize enemies!

Y Button	Staff Spin
X Button	Birdarang
A, A, Y Buttons	Boy Wonder Barrage
A Button (hold to charge)	Ninja Strike
Y Button (hold to charge)	Staff Swing
X Button (hold to charge)	Triple Discs
	Bye Bye Birdies





Cyborg™

Don't be fooled by that great smile—this hero can fire energy blasts, pound countless enemies and smash through the floor without breaking a sweat! Cyborg's powerful ranged and melee attacks make him a champion near and far!

Y Button Roundhouse Punch

X Button Sonic Cannon

A, A, Y Buttons Cyber Stomper

A Button
(hold to charge) Power Punch

Y Button
(hold to charge) Sonic Smash

X Button
(hold to charge) Sonic Beam

 Titan Smash

Raven™

Her telekinetic powers allow her to levitate, create force fields, and release projectiles at her foes. Raven's excellent ranged and charged attacks harness her magical power! Evil, don't get on her bad side!

Y Button Mystic Wave

X Button Raven Attack

A, A, Y Buttons Mystic Storm

A Button
(hold to charge) Raven's Call

Y Button
(hold to charge) Circle of Trigon

X Button
(hold to charge) Raven's Rush

 Prophecy of Doom



Starfire™

Powerful in the air as well as on the ground, Starfire's endless supply of energy bolts makes enemies think twice about crossing her path. Starfire's fast ranged and powerful melee attacks make her an excellent all rounder!

Y Button Sun Blast

X Button Star Bolt

A, A, Y Buttons Slugwhorf Slugfest

A Button
(hold to charge) Koriandr's Kicks

Y Button
(hold to charge) Star Light

X Button
(hold to charge) Star Beam



Tamaran Tempest



Beast Boy™

Baddies, beware his bite! Beast Boy will gladly transform into creatures that stop villains in their tracks. His access to different animal forms means Beast Boy always offers a unique experience!

Y Button Titan Punch

X Button Bananas!

A, A, Y Buttons Pachyderm Pound

A Button
(hold to charge) Monkey Business

Y Button
(hold to charge) Elephant Quake

X Button
(hold to charge) Ram Charge



Gorilla Pound



TEAM ATTACKS

Being a Titan means being part of a super hero team! Team attacks let you eliminate enemies together by taking advantage of your fellow Titans' strengths. You can perform team attacks at close range or from a distance.

Close Range: When one Titan is holding an enemy, and a nearby Titan presses the **L Button**, they unleash a close-range team attack together as the second Titan blasts the baddie up and out.

From A Distance: When one Titan is holding an enemy and a distant Titan holds the **L Button** down, that's the signal for the first Titan to toss the enemy to the second teammate. The first Titan should look for the exclamation point over the other Titan's head, then throw the enemy and watch the second Titan take on the baddie! These team attacks can also be chained together, like a game of volleyball with the baddie as the ball!

Note: If multiple Titans want to receive an enemy, the enemy will be thrown to the nearest team member.

POWER-UPS & COLLECTIBLES

Pick up Teen Titans power-ups and collectibles to gain an advantage over your enemies or unlock hidden extras! Some will appear after you defeat enemies while others are hidden in certain environments.



Yellow Triangle Coins: 1 point



Orange Diamond Coins: 2 points



Red Hexagon Coins: 3 points



Charge: Instantly fills your Charged Attack Meter to 100%.

POWER-UPS & COLLECTIBLES (CONT.)



Speed Up: Increases a Titan's speed for a short time.



Slow Down: Slows down all enemies on screen for a short time.



Energy: Instantly fills your Energy Meter to 100%!



Full Screen Attack: Pick up this power up to perform a Titan specific full screen attack. (See Titan Specific Attacks on page 10.)



Extra Continue: Adds one extra continue to your current total.



Trigon Bird: Additional points and power ups.



The Source: Additional points and power ups.



Soto's Dog: Additional points and power ups.



Silkie: Additional points and power ups.



Larry the Titan: Pick up Larry the Titan to unlock goodies in the Extras menu.

POINTS, UPGRADING TITANS & THE STATS SCREEN

As you play Teen Titans, you'll receive points for successfully attacking enemies and picking up certain collectibles, so you can compare your progress with that of your friends. You'll also unlock new and more powerful combos for each of the Titans.

At the end of every mission, a statistics screen shows you how you did:

- **Charge (Attacks)**
- **Coins**
- **Super (Titan Super Moves)**
- **Combos (Performed)**
- **Total**

For each category you will be graded on how you performed. Grades range from A (Excellent) to C (Average). Titans, Go!



CREDITS

Developed by
Artificial Mind and Movement
Montréal, Canada

Game Director
Nathalie Jasmin

Lead Designer
Shane Keller

Artistic Director
Ghislain Barbe

Production Managers
Noël Kechichian
Simon Desjardins

**Additional Production
Manager**
Nabil Yared

Senior Game Designer
Morgan Jaffit

Game Designer
Sébastien Jean

Additional Game Design
James Everett

Level Designers
Pierre-Richard Malvoy
William Kuo
Phillippe Poulin

Lead Programmer
Yan Herbeuval

**Technical Lead
Programmer**
Etienne Danvoje

Programmers
Olivier Pomerleau
Jean-François Tremblay
Patrick Garon
Daniel Sud
Farshid Salehi
Joseph Chantiri
Stéphanie Rancourt
Guillaume Blanchette-Doutre

Pierre-Olivier Boudreau
François Rayes

Additional Programmers
Dominic Allaire
Julien Dubois

Illustrator
Nicolas L'Heureux

Story
Flint Dille
John Zuur Platten

**Storyboards &
Cinematic Support**
Johane Matte

Lead Animator
David Tardif

Technical Lead Animator
Patrick Saucerotte

Animators
David Prenoveau
Emilie Goulet
Marjolaine Philibert-Lajoie
Kirk Sandiford
Phillippe Greffard
Alexandru Dragutescu
Giovanni Spinelli

Additional Animators
Velislava Nikolova

**Lead Special Effects
& Texture**
Jeremie Chicoine

Texture & Lighting Artists
Nicolas Cote
David Legault
Alex Gingras

CREDITS (CONT.)

Special Effects

Gabriel Paré
Marc D'Amico
Mario Greendale

Lead 3D Artist

Eric Turmel

3D Artists

Gabriel Charest
Phuongvan Hua

Original Music & Sound Design

Mark Mitchell

Additional Sound Design

Daran Nadra
Mike Baugh
Jean-Frédéric Vachon

Lead QA

Cédric Michea

Gameplay Analyst

Vincent Noiret

QA

Jean-Philippe Coté
Bradley Bourne

Technology Group CTO

Martin Walker

Development Director

Stephen Mulrooney

Tools Team Lead

Martin Ruel

Tools Team

Nancy Nadeau
Sylvain Côté
Valerie Methot

Framework Team Lead

Bruno Champoux

Framework Team

Gabriel Côté
Mathieu Rouleau
Nicolas Fleury

Graphics Team Lead

Michel Vachon

Graphics Team

Jason Lacroix
Philippe Trottier
Sébastien Genovese

Audio Team Lead

Daniel Carrier

Audio Team

Simon Pelssier

Simulation Team

Christian Martineau
Liko-Paul Pinsonnault

MANAGEMENT

Executive Producer & CEO

Rémi Racine

Head of Production

Chafye Nemri

Game Executives

Denis Lacasse
Christophe Gomez

Creative Director

David Osborne

Technical Art Director

David Lightbown

Engineering Technical Director

Adrian Jones

Additional Music

Multimediaris - Eric Vigneault

Special Thanks

Alain Moreau
Alexandre Beloin
Basil Lanaris
Bisser Maximov
Brandon Lee-Dresler
Chloé Desautels
Daniel Caron
David Sasson
Hervé Lange
Jean-Martin Masse
Johane Drapeau
Kristin Wheatley
Lyne Girouard
Marc Devault
Maria Radice
Martin Saindon
Martin Thibert
Mathieu Desgranges-Trépanier
Mylène Fréchette
Sarah Stewart
Shelley Johnson
Sophie Bordeleau
Sophie Ouellet
Friends & Families

Voice & Casting Director

Andrea Romano

VOICE TALENT

Robin, Red X

Scott Menville

Cyborg

Khary Payton

Raven

Tara Strong

Beast Boy

Greg Cipes

Starfire

Hynden Walch

Slade

Ron Perlman

Jinx, Gizmo

Lauren Tom

Mammoth, Trigon

Kevin Michael Richardson

Cinderblock, Plasmus, Ternion

Dee Bradley Baker

Mumbo Jumbo

Tom Kenny

Master of Games, Wildebeest

Jim Cummings

Speedy

Mike Erwin

Terra

Ashley Johnson

Hotspot

Bumper Robinson

Bumble Bee

T'keyah Keymah

Mad Mod

Greg Ellis

Dr. Light

Rodger Bumpass

Fang

Will Friedle

Control Freak

Alexander Polinsky

CREDITS (CONT.)

MAJESCO ENTERTAINMENT

Executive Vice President Research & Development

Joseph Sutton

Vice President of Special Projects

Adam Sutton

Executive Producer

Dean Martinetti

Producer

Anthony DeLuca

Art Director

Frank Lam

Programmer

Chris Montanaro

Product Development Manager

Catherine Biebelberg

Vice President of Marketing

Ken Gold

Senior Product Manager

Liz Buckley

Associate Product Manager

Zach Smith

Marketing Coordinator

Matt Ciccone

Director of Creative Services

Leslie Mills DeMarco

Art Director, Creative Services

Vic Merritt

Senior Graphic Designer

Andy Cummings

Web Designer

Keith Patrick

Quality Assurance Manager

Joe McHale

Project Lead

Kevin Kurdes

Project Test Leads

Manny Hernandez

Gina Giacobbe

Ian Gillespie

Lead Testers

Eric Jezercak

Rob Cooper

Testers

Jonathan Black

Nicholas Greder

Pete Rosky

Josh Hexner

Jorge Cosme

Rich Wogan

Tito Jimenez

Martin Sanelli

Phillip Johnson

Onix Alicea

Joey Goldstein

Enrico Saroca

Steven Harris

Marc Duniak

Jonathan Marczj

Damion DeStefano

John Moran

Larry Contreras

Hunter S. Gollum

Additional QA

Bug-Tracker Laboratories Inc.

IT Manager

Paul Campagna

IT Assistant

Kevin Tsakonas

Special Thanks

Morris Sutton

Jesse Sutton

Dick Wnuk

Jamie Bartolomei

HighWater Group

Tangible Media

Jodi Feinstein

Maria Basile

Donna Zaborowski

WARNER BROS. INTERACTIVE ENTERTAINMENT

Associate Producer

Jason Ades

Manager of Rights & Clearances

Karen Pierson

Director of Production

Jonathan Eubanks

Vice President of Production

Philippe Erwin

Marketing Manager

Stephanie Johnson

Public Relations Manager

Remi Sklar

Marketing Coordinator

David S. Cohen

Director of Sales & Business Development

Scott Johnson

Senior Vice President

Jason Hall

Special Thanks

Debra Baker

Wendy Bozzi

Steve Chalk

Chris Chen

Scott Cuthbertson

Marti Esteva

Jeneba Konare

Denise Maratas

Jeff Nachbaur

Gary Sheinwald

Angel Sisson

Michael Steuerwald

Jennifer Stump

AJ Vargas

Nick Torchia

Thomas Zellers

Frank Keating

Rita Cooper

Leah Tribble

Scot Kramarich

Nathan Whitman

Kirsten Gavoni

DC COMICS

Producer

Gene Bahng

Project Manager

Dana Kurtin

Special Thanks

Richard Bruning

Linda Lee

Paul Levitz

John Nee

Marty Pasko

Ron Perazza

Sandy Resnick

Cheryl Rubin

Shontae Savage

CATCH US ON DVD!

Now Available
THE COMPLETE FIRST SEASON



TEEN TITANS

Season 2 coming soon to DVD

REGISTER YOUR GAMES ONLINE AT www.thq.com

NOTES:



MY THQ

Go to the MY THQ link at www.thq.com to win games and other great prizes. Plus...

- Personalize your online experience with MY THQ to receive game alerts, exclusive screens, videos and wallpapers
- Get the latest THQ newsletters
- Access the Career Zone, Forum and online games
- Download the latest demos and patches
- Easy to use site for all THQ gaming information
- Quick links to search by title or platform
- Be considered for beta testing and help shape the THQ games of the future

**SUBSCRIBE
AND SAVE
25%!**

TEEN TITANS GO!

**12 issues
for only
\$19.99**



TO ORDER CALL 1-800-887-6789 MENTION CODE B05TTGV TO RECEIVE THE DISCOUNT.

Foreign and Canadian orders, add \$12 for postage (includes GST).

Newsstand price is \$2.25 per issue.

Allow 10-12 weeks for delivery of 1st issue.

TM & © 2006 DC Comics. All rights reserved.

WARRANTY AND SERVICES INFORMATION

In the unlikely event of a problem with your product ("Product"), you may only need simple instructions to correct the problem. Please contact the THQ Inc. ("THQ") Customer Service Department at (818) 880-0456 or on the web at <http://www.thq.com> before returning the Product to a retailer. Live Customer Service Representatives are available to help you Monday through Friday 9am to 5pm PST or you can use our automated systems by phone or on the web 24 hours a day, 7 days a week. Please do not send any Product to THQ without contacting us first. Your 5 digit Product Code is 38062. Please use this code to identify your Product when contacting us.

LIMITED WARRANTY

THQ warrants to the best of THQ's ability to the original consumer purchaser of the Product that the medium on which the Product is recorded shall be free from defects in materials and workmanship for a period of ninety (90) days from the original date of purchase. The Product is sold "as is", without express or implied warranty of any kind, and THQ is not responsible for any losses or damages of any kind resulting from use of this Product. If a defect occurs during this ninety (90) day warranty period, THQ will either repair or replace, at THQ's option, the Product free of charge. In the event that the Product is no longer available, THQ may, in its sole discretion, replace the Product with a Product of comparable value. The original purchaser is entitled to this warranty only if the date of purchase is registered at point of sale or the consumer can demonstrate, to THQ's satisfaction, that the product was purchased within the last ninety (90) days.

To receive warranty service:

Notify the THQ Customer Service Department of the problem requiring warranty service by calling (818) 880-0456 or on the web at <http://www.thq.com>. If the THQ service technician is unable to solve the problem by phone or on the web via e-mail, he will authorize you to return the Product, at your risk of damage, freight and insurance prepaid by you, together with your dated sales slip or similar proof-of-purchase within the ninety (90) day warranty period to:

THQ Inc.
Customer Service Department
29903 Agoura Road
Agoura Hills, CA 91301

THQ is not responsible for unauthorized returns of Product and reserves the right to send such unauthorized returns back to customers.

This warranty shall not be applicable and shall be void if: (a) the defect in the Product has arisen through abuse, unreasonable use, mistreatment or neglect; (b) the Product is used with products not sold or licensed by Nintendo or THQ (including but not limited to, non-licensed game enhancement and copier devices, adapters and power supplies); (c) the Product is used for commercial purposes (including rental); (d) the Product is modified or tampered with; (e) the Product's serial number has been altered, defaced or removed.

Repairs after Expiration of Warranty

After the ninety (90) day warranty period, defective Product may be replaced in the United States and Canada for US\$25.00. The original purchaser is entitled to the replacement of defective Product for a fee only if proof of purchase is provided to THQ. Make checks payable to THQ Inc. and return the product along with the original proof of purchase to the address listed above.

Warranty Limitations

THIS WARRANTY IS IN LIEU OF ALL OTHER WARRANTIES AND REPRESENTATIONS. NO OTHER WARRANTIES OR REPRESENTATIONS OR CLAIMS OF ANY NATURE SHALL BE BINDING ON OR OBLIGATE THQ. ANY APPLICABLE IMPLIED WARRANTIES OR REPRESENTATIONS, INCLUDING WARRANTIES OF MERCHANTABILITY AND FITNESS FOR A PARTICULAR PURPOSE ARE HEREBY LIMITED TO NINETY (90) DAYS FROM THE DATE OF PURCHASE AND ARE SUBJECT TO THE CONDITIONS SET FORTH HEREIN. IN NO EVENT SHALL THQ BE LIABLE FOR CONSEQUENTIAL OR INCIDENTAL DAMAGES RESULTING FROM THE BREACH OF ANY EXPRESS OR IMPLIED WARRANTIES.

The provisions of this warranty are valid in the United States only. Some states do not allow limitations on how long an implied warranty lasts or exclusion of consequential or incidental damages, so the above limitations and exclusions may not apply to you. This warranty gives you specific legal rights, and you may also have other rights, which may vary, from state to state.

Warning

Copying of this Product or any of its contents or elements is illegal and is prohibited by United States and international copyright laws. Back-up or archival copies of this Product or any of its contents or elements are not authorized and are not necessary to protect your Product. United States and international copyright laws also protect this manual and other printed matter accompanying this Product. Violators will be prosecuted.

Uses Bink Video. Copyright © 1997-2005 by RAD Game Tools, Inc. Teen Titans uses Havok™ Physics.
© Copyright 1999-2004 Havok Inc. (and its Licensors). All Rights Reserved. See www.havok.com for details.
"TEEN TITANS" (Andy Sturmer) ©WARNER-BARHAM MUSIC LLC (BMI). ALL RIGHTS ADMINISTERED BY WARNER-TAMERLANE PUBLISHING CORP. ALL RIGHTS RESERVED. USED BY PERMISSION.

Available Now!



THQ Inc. 29903 Agoura Road, Agoura Hills, CA 91301



SCOOBY DOO! and all related characters and elements are trademarks of and
© Hanna Barbera
WBIE LOGO, WB SHIELD™ & © Warner Bros. Entertainment Inc.
(s05)

SCOOBY DOO! UNMASKED Software © 2005 THQ Inc. Used under exclusive license
by THQ Inc. THQ and the THQ logo are trademarks and/or registered trademarks of
THQ Inc. All Rights Reserved. All other trademarks, copyrights and logos are
property of their respective owners. TM © Game Boy Advance, Nintendo
GameCube and Nintendo DS are trademarks of Nintendo. © 2004 Nintendo



EVERYONE



Cartoon Violence



www.thq.com

PRINTED IN USA

107595