



[www.xiii-thegame.com](http://www.xiii-thegame.com)

Mobile game:

[www.gameloft.com](http://www.gameloft.com)



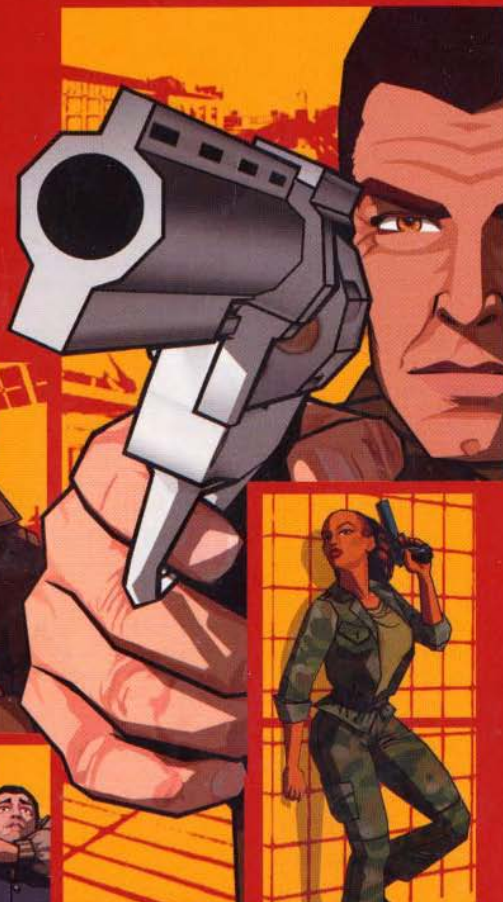
DARGAUD



UBISOFT



# XIII



manual



UBISOFT

DARGAUD

## Safety Information

### About Photosensitive Seizures

A very small percentage of people may experience a seizure when exposed to certain visual images, including flashing lights or patterns that may appear in video games. Even people who have no history of seizures or epilepsy may have an undiagnosed condition that can cause these «photosensitive epileptic seizures» while watching video games.

These seizures may have a variety of symptoms, including lightheadedness, altered vision, eye or face twitching, jerking or shaking of arms or legs, disorientation, confusion, or momentary loss of awareness. Seizures may also cause loss of consciousness or convulsions that can lead to injury from falling down or striking nearby objects.

Immediately stop playing and consult a dNovor if you experience any of these symptoms. Parents should watch for or ask their children about the above symptoms—children and teenagers are more likely than adults to experience these seizures.

The risk of photosensitive epileptic seizures may be reduced by sitting farther from the television screen, using a smaller television screen, playing in a well-lit room, and not playing when you are drowsy or fatigued.

If you or any of your relatives have a history of seizures or epilepsy, consult a dNovor before playing.

**Other Important Health and Safety Information** The Xbox Instruction Manual contains important health and safety information that you should read and understand before using this software.

### Avoid Damage to Your Television

**Do not use with certain televisions.** Some televisions, especially front- or rear-projection types, can be damaged if any video games, including Xbox games, are played on them. Static images presented during the normal course of game play may «burn in» to the screen, causing a permanent shadow of the static image to appear at all times, even when video games are not being played. Similar damage may occur from the static images created when placing a video game on hold or pause. Consult your television owner's manual to determine if video games can be played safely on your set. If you are unable to find this information in the owner's manual, contact your television dealer or the manufacturer to determine if video games can be played safely on your set.

Unauthorized copying, reverse engineering, transmission, public performance, rental, pay for play, or circumvention of copy protection is strictly prohibited.

## Table of Contents

<b>Connect to Xbox Live</b> .....	<b>2</b>
<b>Game Controls</b> .....	<b>6</b>
<b>Introduction</b> .....	<b>6</b>
<b>Main Characters in the Game</b> .....	<b>7</b>
<b>Main Menu</b> .....	<b>7</b>
<b>The Game</b> .....	<b>10</b>
<b>HUD (Head-Up Display)</b> .....	<b>10</b>
<b>Game Menu</b> .....	<b>11</b>
<b>Game Weapons</b> .....	<b>12</b>
<b>Files on XIII</b> .....	<b>13</b>
<b>The Objects</b> .....	<b>13</b>
<b>Multi-Player Mode</b> .....	<b>14</b>
<b>Split-Screen Game</b> .....	<b>14</b>
<b>Multi-Player Game Modes</b> .....	<b>15</b>
<b>Live Game</b> .....	<b>15</b>
<b>Customer Service and Warranty</b> .....	<b>17</b>

## Connect to Xbox live

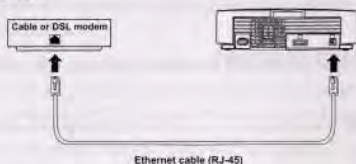
**Important!** Before using this product, read the Xbox Instruction Manual for important safety information and health warnings.

### Step 1: Connect

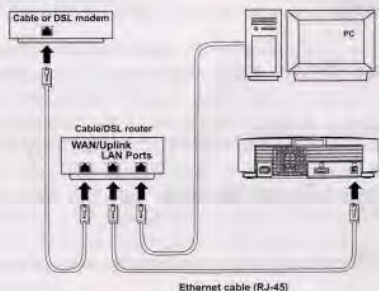
To connect your Xbox console directly to broadband, see diagram A. Or, to share your broadband connection with a PC, see diagram B.

For more details and other home networking options, including Internet connection sharing, see [www.xbox.com/live](http://www.xbox.com/live).

#### A. Direct Connection



#### B. Shared Connection



### Step 2: Go Live

**Important!** Xbox Live is a subscription service. You will need a subscription code to set up an Xbox Live account and play online. To find out how to get a subscription code, visit your local retailer or see [www.xbox.com/live](http://www.xbox.com/live).

You'll need to set up an Xbox Live account to play games online. Here's how:

1. Insert an Xbox Live Starter Kit disc or game disc into the disc tray. Check game packaging to see if the game supports Xbox Live play.
2. From within the game, select the option for Xbox Live.

At this point, the Xbox console will try to go online. If it works, create your Xbox Live account by following the instructions on screen and entering your subscription code when prompted.

If the Xbox console can't go online automatically, you'll get an error message. Go on to Step 3.

### Step 3: Configure (if necessary)

If you can't go online automatically, use Network Setup in the Xbox Dashboard to enter some network settings. You may need to enter information such as a host name, a MAC address, or an ISP user name and password. Contact your broadband service provider if you don't have this information. Once you have the information, enter it in the Xbox Dashboard.

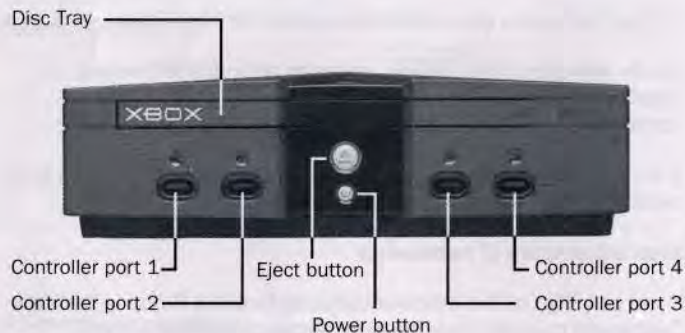
### Need more help?

Should you have any problems connecting to the Xbox Live service, do not attempt to take apart, service, or modify the Xbox console or peripherals in any way. Doing so could present the risk of serious injury or death from electric shock or fire and will also void your warranty. For additional assistance see [www.xbox.com/live](http://www.xbox.com/live) or call the Customer Support number:

- United States and Canada: 1-800-4MY-XBOX (1-800-469-9269)
- TTY users (requires special equipment for hard of hearing):  
United States and Canada: 1-866-740-9269 or 1-425-635-7102

## Using the Xbox Video Game System

1. Set up your Xbox™ video game system by following the instructions in the Xbox Instruction manual.
2. Press the power button and the status indicator light will light up.
3. Press the eject button and the disc tray will open.
4. Place the <Title> disc on the disc tray with the label facing up and close the disc tray.
5. Follow the on-screen instructions and refer to this manual for more information about playing <Title>.



## Avoiding Damage to Discs or the Disc Drive

To avoid damage to discs or the disc drive:

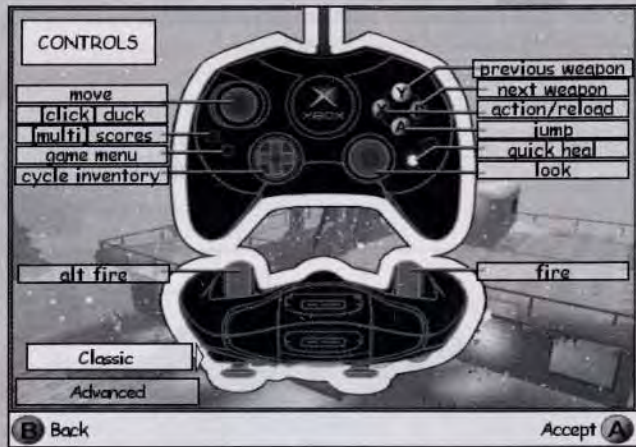
- Insert only Xbox-compatible discs into the disc drive.
- Never use oddly shaped discs, such as star-shaped or heart-shaped discs.
- Do not leave a disc in the Xbox console for extended periods when not in use.
- Do not move the Xbox console while the power is on and a disc is inserted.
- Do not apply labels, stickers, or other foreign objects to discs.

## Using the Xbox Controller

1. Connect the Xbox Controller to any controller port on the front of the Xbox console. For multiple players, connect additional controllers to available controller ports.
2. Insert any expansion devices (for example, Xbox Memory Units) into controller expansion slots as appropriate.
3. Follow the on-screen instructions and refer to this manual for more information about using the Xbox Controller to play <Title>.



## Game Controls



## Introduction

### The United States.

The country's still in a state of shock after President Sheridan's assassination.

You wake up, amnesiac and wounded, on a deserted East Coast beach. The only clues to your identity are the number XIII tattooed near your collarbone and the key to a safety-deposit box.

Though your memory has let you down, you find you have the reflexes of a highly-trained professional combatant.

You set off in search of your past, discovering the part you played in the killing of the President of the United States and tracing the biggest conspiracy ever known in the history of the country back to its source.

## Main Characters

- **General Carrington.** He seems to know a lot about your past. He's convinced you're innocent, and he'll do anything he can to help you find the truth.
- **Jones.** Carrington's aide-de-camp. Above all, she's a highly trained soldier who watches over you when the going gets really tough.
- **Amos.** A high-ranking FBI man, Amos is in charge of investigating the plot behind President Sheridan's assassination.
- **The Mongoose.** A ruthless killer, he hunts down XIII for the Conspiracy. Until his contract is fulfilled, nothing will stand in his way.
- **Number 1.** He conducts the Conspiracy that assassinated President Sheridan from the shadows. Will you be able to foil his evil plans?

## Main Menu

### Profile Selection Screen

Select the profile you want, then press A to validate. Your profile contains all the information about your previous games: saved games in Solo Mode, character profile for Multi-Player Mode and for Xbox Live.

Choose "New Profile" to create a new profile.



## Main Screen

**Continue:** to continue the latest game in progress

**New game:** to create a new XIII game

**Load a game:** to load a particular saved game

**Multi-players:** to access the XIII Multi-Player Mode

**Options:** to access the game options



## Continue Screen

**Play:** To restart the latest saved game. You begin again at the start of the last map played.

**Story:** This option displays a summary of the missions already accomplished and the key points of the adventure.

**Skills:** Select this option to see the skills acquired by XIII in the course of his adventures.

**Documents:** Select this option to view all the important documents that XIII has found.

**The Conspiracy:** This screen shows the members of the Conspiracy that you've already unmasked.



## Options Menu

**Parental Lock:** Activate this option to remove the violent graphic effects in the game.

**Audio Menu:** Choose this option to adjust the audio settings for XIII.

**MusicMenu:** To activate or deactivate the music

**Mode:** To activate or deactivate stereo mode.

**Video Menu:** Choose this option to adjust all the video settings for XIII.

**Brightness:** to increase/decrease the general brightness.

**Gamma:** to increase/decrease the gamma.

**Contrasts:** to increase/decrease the general contrast.

**Controls Menu:** Select this option to choose between the different configurations for your controller.

**Advanced Options:** To access advanced control functions.

**Auto-aim:** to deactivate the auto-aim in the game

**Invert Look:** Choose "Yes" to invert the view horizontally.

**View speed:** choose the view speed of your controller.

**Difficulty Menu:** To set the difficulty level of the game.

**Arcade:** easy game mode.

**Normal:** normal game mode.

**Realistic:** difficult game mode.



## The Game

Now you're ready to begin XIII's adventure!

### HUD (Head-Up Display)

HUD provides the player with essential information: health level, armour and ammunition points for the currently used weapon.



When XIII's health level reaches zero, he dies. Throughout the game, you can pick up Medkits to regain life. You'll also find bullet-proof jackets and helmets to increase your "armour".



In the course of the game, you'll come up against many enemies who will try to eliminate you. To help you out, a red arrow on-screen indicates the source of enemy fire.

Sometimes images in pop-up windows appear to warn you of an impending danger.

XIII has a sixth sense and can smell danger a few seconds before it confronts him: a signal in the bottom left of the screen activates when an enemy approaches.

Furthermore, you can hear the footsteps of enemies who are close by.

## Game Menu

During the game, press the start button to access the menu.

**Save game:** Select this option to save your current game. Please note: this save allows you to start at the beginning of the level you were on when you saved. A checkpoint in the middle of the longest missions enables you to go back to this point if you die in the second part of the mission.

**Return to game:** To return to the current game.

**Controls:** Select this option to access the Game Controls screen.

**Skills:** Select this option to view the different skills that XIII possesses and a description of how they are used.

**Retry:** Select "Restart Level" to replay the current level from the beginning.

**Quit game:** To quit the current game and go back to the Main Menu.



## XIII's Weapons

XIII has a formidable arsenal. Each weapon can be used normally or in alternating fire mode.



**Knife:** Highly effective in hand-to-hand combat and at short range. Much less precise when used from a distance.



**9 mm Pistol:** The most frequently encountered handgun in the game. It can sometimes be fitted with a silencer for infiltration missions.



**Grenade:** An ultra-powerful weapon. Use with care, otherwise you'll blow yourself up!



**.44 Special:** A very powerful gun. It can prove highly effective at short and medium range.



### Shotgun and Pump-Action Shotgun:

Shotguns for close combat. They are powerful weapons, but this advantage is offset by their fairly low rate of fire.



**Harpoon Launcher:** Though intended for underwater combat, this weapon is also highly effective on the ground.



**Simple Crossbows:** There are 2 models of these silent weapons, with 1 bolt and 3 bolts in the clip. They're ideal for eliminating soldiers on guard duty at long range.



**Mini Gun:** A handheld submachine gun. This arm is extremely effective in close combat, but watch out for the recoil when shooting in bursts!



**Kalash:** The favourite weapon of the mercenaries employed by the Conspiracy. It's equally effective over short and medium range.



**Assault Rifle:** As deadly as its twin, the Kalash. What's more, this assault rifle is fitted with a grenade-launching tube which can wreak havoc in enclosed spaces.



**SMG (Sub-Machine Gun):** A heavy sub-machine gun. This is one of the most powerful weapons in the game. The big drawback is its excessive weight, which slows XIII down when he's using it.



**Bazooka:** Unquestionably the most powerful weapon in the game. It can kill large numbers of enemies with a single shot. Take care not to fire at too close range, if you don't want to injure yourself.



**Sniper Rifle:** With its very long range and firepower, the Sniper Rifle has no cause to be jealous of assault rifles. It is very useful for eliminating enemies lying in ambush or very far away.

## Files on XIII

There are a lot of files about XIII's past to be found along the way in the game. When you find them, you'll earn new skills – like, for example, how best to use the Medkits.

## Objects



**Medkit:** Enables you to pick up 25 or 50 health points (if you have acquired the "medical care" skill).



**Full Medkit:** Enables you to pick up 50 or 100 health points (if you have acquired the "medical care" skill).



**Key:** Each key corresponds to a particular door. You'll find a lot of keys on the guards.



**Lockpick:** An essential tool for picking even the most stubborn locks.





**Magnetic Pass:** The best-protected buildings use this highly sophisticated security system.

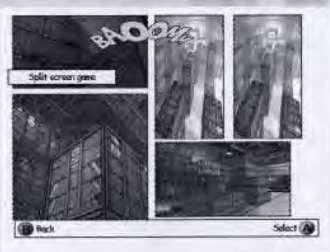


**Grapnel:** Both indoors and outdoors, the grapnel will help you get into the most hard-to-reach corners of the game.

## Multiplayer Mode

This section provides all the information you need to enjoy XIII's multi-player modes to the full.

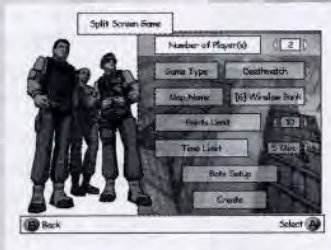
**Split-Screen:** In Split-Screen Mode, up to 4 players can play on a single Xbox console. Choose the Split-Screen Game option. The controller selection screen then appears.



**Host a lan game:** You can connect 2 Xbox consoles using a link Xbox console cable or more consoles using an Ethernet Hub and Ethernet standard cables.

**Join a lan game:** to find and play a game on an internal network.

When you create a multi-player game, you must adjust the settings. The Game Rules option lets you choose the type of game, the number of players and the other game settings.



## Multiplayer Game Modes

- **Deathmatch:** Kill as many enemies as possible within a time limit, or be the first to reach the kill-total selected at the start.
- **Team Deathmatch:** As the Deathmatch mode, but the points are won by the teamDeathmatch
- **Sabotage:** Each team is made up of 2 players or more. Each player has specific skills. One team must defend the checkpoints; the other team must blow them up. The game ends after a certain time lapse (depending on the map) and the winning team is the one which has achieved its goal: the defenders win if they have prevented the attackers from dynamiting the sites; the attacks win when they've destroyed all the checkpoints.
- **Capturing the Flag:** Each team must take the opposing team's flag and bring it back to their base without losing their own flag.

## Live Game

If you have opened an Xbox Live account, you can play against other games on the Internet. Information concerning connections between your Xbox console and a high-speed modem are in the "Connecting to Xbox Live" section at the beginning of this manual. If you do not have an Xbox Live account, you can open one. All you have to do is select "Multi-Player" in the Main Menu. Then choose "Live Player". Choose the Account Selection Menu, then "New Account". You may then register with Xbox Live.

If you already have an Xbox Live account, simply select the Live Player menu after choosing "Multi-Player" from the Main Menu. Several options are then displayed, enabling you to join an existing game or create a new one.

### • Rapid Match

If you simply wish to start a Rapid Match without worrying about your preferences, use the Rapid Match function. Select "Rapid Match", then choose the type of game.

### • Optimatch

If you choose Optimatch, you can define more preferences for the game. For example, you can search only for games which accept a certain maximum number of players which suits you best. The "Minimum Active Players" option enables you to filter out the servers containing less than a specified number of players. You can also look for your friends: if you do this, only the games with players who are on your list of friends will be displayed. Once you've defined the settings, use the "Search" button to obtain a list of 8 games. Select a game to join it. If no game tempts you, press the b button to go back to the Search screen and change your search settings.

### • Create a Match

If you want to start a game, select "Create a Match". But watch out: if you quit a game you have created, all the players will be ejected and the game will stop. You should make certain settings for the game. First of all, set the Game Mode. Then configure the server that you want to set up. If you choose "Public", anyone can join the game. If you choose "Private", only your guests can join the game. Lastly, you should set the maximum number of players for the game. When starting up, XIII will check your connection and allocate a number. You can decrease or increase this number, but if you increase it the game performance may be adversely affected. Once the game has begun, you can set the server options. The maximum number of players is adjusted according to the previously set value.

## WARRANTY

Ubisoft offers a Technical Support service which details are indicated in the text of the manual relative to Technical Support.

When you (the "User") contact Technical Support, please be as specific as you can be about the problem you are experiencing and have the below details available:

- The name of the manufacturer of your computer system
- The brand and speed of the processor
- How much RAM you have
- The version number of windows you are using (if you aren't sure, right-click on the my computer icon on your desktop and select 'properties')
- The manufacturer name and model number of your video card, modem, and sound card.

Ubisoft guarantees to the original buyer of the multimedia product that the compact disc (CD) supplied with this multimedia product shall not show any fault during a normal-use period of one hundred and eighty (180) days from the invoiced date of purchase, or any other longer warranty time period provided by applicable legislation.

Please return any defective multimedia product by registered letter to: Technical Support together with this manual and your registration card if you have not already sent it to us. Please state your full name and address (including postcode), as well as the date and location of purchase. You may also exchange the multimedia product at the place of purchase.

If a disc is returned without proof of purchase or after the warranty period has expired, Ubisoft will choose either to repair or to replace it at customer expense. This warranty is invalid if the disc has been damaged through negligence, accident or misuse, or if it has been modified after acquisition. The User recognises expressly that he uses the multimedia product at his own risk.

The multimedia product is provided as is, without any warranty other than what is laid down above. The User is responsible for any costs of repairing and/or correcting the multimedia product.

To the extent of what is laid down by law, Ubisoft rejects any warranty relating to the market value of the multimedia product, the User's satisfaction or its capacity to perform a specific use.

The User is responsible for all risks connected with lost profit, lost data, errors and lost business or other information as a result of owning or using the multimedia product.

As some legislations do not allow for the aforementioned warranty limitation, it is possible that it does not apply to the User.

## OWNERSHIP

The User recognises that all of the rights associated with this multimedia product and its components, its manual and packaging, as well as the rights relating to the trademark, royalties and copyrights, are the property of Ubisoft and Ubisoft's licensors, and are protected by French regulations or other laws, treaties and international agreements concerning intellectual property. Documentation should not be copied, reproduced, translated or transferred, in whole or in part and in whatever form, without prior written agreement of Ubisoft.

## UBISOFT CONTACTS AT YOUR DISPOSAL

### TECHNICAL SUPPORT

**NEW:** To serve you better, Ubisoft is now providing full ONLINE support, to solve your gaming problems quickly and efficiently. Simply go to <http://ubisoft-en.custhelp.com> and visit the Ubisoft Frequently Asked Questions first!

By visiting our FAQ database, you can find exactly the same answers that are available to you by calling or sending email to our support representatives. This service is free and available 24/7!

If for any reason you do not find the answer to your question, you can click on the Ask a question link in the FAQ to send us an email, ensuring that we get all the important information on your system and your problem so we can answer correctly the first time.

**Make sure to include all information on your system, your problem, and the game you are playing.**

If you do not have email access, Our support representatives can assist you from 9:00 am until 7:00pm, Monday – Friday (excluding Bank Holidays) on Telephone: 0905-482-0109 Calls cost 30p per minute. Please be at your system when calling Ubisoft for support.

### HINTS & TIPS

Looking for cheats to go up to the next level? Call us for Hints and Tips Telephone Number: 0906 643 0200, available hours 9.00 am until 7.00 pm Monday – Friday (excluding Bank Holidays) to speak to one of our representatives. Calls cost £1.50 per minute, please ask permission from the person who pays the phone bill.



# Play games online. Make new friends. Take them out.

## Prepare for online gaming with broadband from BT



With Xbox® Live™ and a high speed broadband connection from BT you can play online enabled games like XIII with anyone, anywhere, at anytime.



Add a whole new dimension to your gaming.  
To find out more, visit: [www.bt.com/xboxlive](http://www.bt.com/xboxlive)



## The ultimate broadband gaming experience



DOWNLOAD

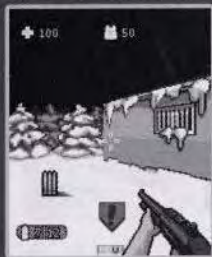
XIII

ON YOUR MOBILE PHONE  
WITH GAMELOFT!

TO MEET XIII, JONES AND THE MONGOOSE AGAIN,  
DOWNLOAD THEM ON YOUR MOBILE!

SIMPLY TEXT 'PLAY + PHONE MODEL' TO 84050\*  
EXAMPLE: IF YOU HAVE A NOKIA 7650, TEXT 'PLAY 7650'.  
THEN FOLLOW THE INSTRUCTIONS.

CODE : 6437



TO CHECK THE COMPATIBILITY OF YOUR PHONE AND DISCOVER  
MORE GREAT GAMES VISIT OUR WEBSITE AT

[www.gameloft.com](http://www.gameloft.com)

**Take XIII to the next level!**  
**Join the growing online XIII community**  
**and get access to:**

- new content : maps, mods...
- great competitions with fantastic prizes
- exclusive hints and tips
- meet new friends on the forums and get all the help you need

**Come and join us at [www.XIII-thegame.com](http://www.XIII-thegame.com) !**

**Microsoft**



XBOX  
LIVE

Microsoft, Xbox, and the Xbox logos are either registered trademarks or trademarks of Microsoft Corporation in the United States and/or other countries and are used under license from Microsoft.