

TAKE YOUR REVENGE

Coming Soon



Register Online Today!

It's as simple as 1, 2, 3!

1. Go to www.gameregister.com
2. Enter your game's info
3. Select a great offer

Receive exclusive game-related info and other special offers by registering online today! That's it.

Atari will not contact you without your express permission and does not sell or share registration information.

For more information about our privacy policy, visit

http://www.us.atari.com/privacy_policy.asp

TEEN



Blood
Crude Humor
Suggestive Themes
Violence

ESRB CONTENT RATING

www.esrb.org

Atari, Inc., 417 Fifth Avenue, New York, NY 10016 USA

MADE IN THE USA.

© 2003 Atari, Inc. All Rights Reserved. © 2003 Human Head Studios, Incorporated. Dead Man's Hand and the Dead Man's Hand logo are Trademarks of Human Head Studios, Incorporated. All rights reserved. All trademarks are the property of their respective owners.

Microsoft, Xbox, Xbox Live, the Live logos and the Xbox Logos are registered trademarks or trademarks of Microsoft Corporation in the United States and/or other countries and are used under license from Microsoft.

Part # 23877M

ATARI

XBOX

LIVE

ONLINE ENABLED

Unreal II

THE AWAKENING



MATURE 17+
M
CONTENT RATED BY
ESRB

ATARI

SAFETY INFORMATION

About Photosensitive Seizures

A very small percentage of people may experience a seizure when exposed to certain visual images, including flashing lights or patterns that may appear in video games. Even people who have no history of seizures or epilepsy may have an undiagnosed condition that can cause these "photosensitive epileptic seizures" while watching video games.

These seizures may have a variety of symptoms, including lightheadedness, altered vision, eye or face twitching, jerking or shaking of arms or legs, disorientation, confusion, or momentary loss of awareness.

Seizures may also cause loss of consciousness or convulsions that can lead to injury from falling down or striking nearby objects.

Immediately stop playing and consult a doctor if you experience any of these symptoms. Parents should watch for or ask their children about the above symptoms — Children and teenagers are more likely than adults to experience these seizures.

The risk of photosensitive epileptic seizures may be reduced by sitting farther from the television screen, using a smaller television screen, playing in a well-lit room, and not playing when you are drowsy or fatigued.

If you or any of your relatives have a history of seizures or epilepsy, consult a doctor before playing.

Other Important Health and Safety Information The Xbox Instruction Manual contains important health and safety information that you should read and understand before using this software.

Avoid Damage to Your Television

Do not use with certain televisions. Some televisions, especially front- or rear-projection types, can be damaged if any video games, including Xbox games, are played on them. Static images presented during the normal course of game play may "burn in" to the screen, causing a permanent shadow of the static image to appear at all times, even when video games are not being played. Similar damage may occur from static images created when placing a video game on hold or pause. Consult your television owner's manual to determine if video games can be played safely on your set. If you are unable to find this information in the owner's manual, contact your television dealer or the manufacturer to determine if video games can be played safely on your set.

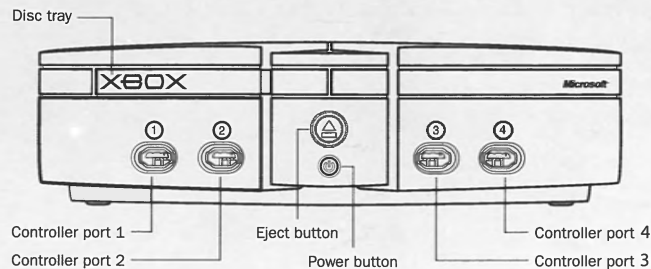
Unauthorized copying, reverse engineering, transmission, public performance, rental, pay for play, or circumvention of copy protection is prohibited.

TABLE OF CONTENTS

Getting Started	2
Xbox Live™	3
Using the Xbox Controller	4
Controls	5
Story	6
Main Menu	6
Profiles	7
Options Menu	7
Single-Player Heads-Up Display	9
Pause Menu	9
Terran Military Hardware	10
Alien Weapons	14
Other Items	14
Expanded Multiplayer Game (XMP)	15
XMP Xbox Live Game Options	15
XMP System Link Game Options	16
XMP Options Menu	17
XMP HUD	17
Team Energy Meter	18
Radar	18
Character Classes	19
Points of Interest	21
Game Tips	24
Advanced Techniques	24
Credits	25
Atari Web Sites	29
Technical Support	29
End-User License Agreement	31

GETTING STARTED

1. Set up your Xbox video game system by following the instructions in the Xbox Instruction Manual.
2. Press the power button and the status indicator light will light up.
3. Press the eject button and the disc tray will open.
4. Place the *Unreal® II - The Awakening* disc on the disc tray with the label facing up and close the disc tray.
5. Follow on-screen instructions and refer to this manual for more information about playing *Unreal II - The Awakening*.



Avoiding Damage to Discs or the Disc Drive

To avoid damage to discs or the disc drive:

- Insert only Xbox-compatible discs into the disc drive.
- Never use oddly shaped discs, such as star-shaped or heart-shaped discs.
- Do not leave a disc in the Xbox console for extended periods when not in use.
- Do not move the Xbox console while the power is on and a disc is inserted.
- Do not apply labels, stickers, or other foreign objects to discs.

XBOX LIVE™

Take *Unreal II - The Awakening* Beyond the Box

Xbox Live™ is a high-speed or broadband Internet gaming community where you can create a permanent gamer identity, set up a Friends List with other players, see when they're online, invite them to play, and talk to them in real-time as you play.

Downloadable *Unreal II - The Awakening* Content

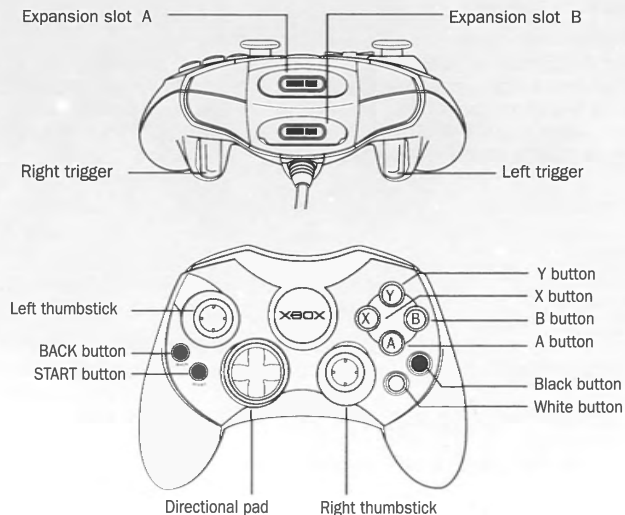
If you are an Xbox Live subscriber, you can download the very latest content (such as new levels, missions, weapons, vehicles and more) to your Xbox console.

Connecting

Before you can use Xbox Live, you need to connect your Xbox console to a high-speed or broadband Internet connection and sign up for the Xbox Live service. To determine if Xbox Live is available in your region and for information about connecting to Xbox Live, see www.xbox.com/connect.

USING THE XBOX CONTROLLER

1. Connect the Xbox Controller to any controller port on the front of the Xbox console. For multiple players, connect additional controllers to available controller ports.
2. Insert any expansion devices (for example, Xbox Memory Units) into controller expansion slots as appropriate.
3. Follow on-screen instructions and refer to this manual for more information about using the Xbox Controller to play *Unreal II – The Awakening*.



CONTROLS

ACTION	CONTROL
Look	Right thumbstick
Move forward / back	Left thumbstick up / down
Strafe right	Left thumbstick right
Third-person vehicle view	Right thumbstick button (XMP Only)
Strafe left	Left thumbstick left
Previous weapon	Y button
Crouch	Directional pad down
Next weapon	B button
Zoom	Right thumbstick button
Primary fire	Right trigger
Use/Reload	X button
Jump	A button
Jet Pack	A button X2 (XMP Only)
Secondary fire	Left trigger
Sprint	Left thumbstick button (XMP Only)
Display scores	White button (XMP Only)
Display objectives	Black button
Menu	START button

There are four preset configurations available. Controller map A is the default. To select a different control setup, select "Controller" in the Options Menu, and then select "Configuration."

Menu Controls

Use the **left thumbstick** or the **directional pad** to move through menus and highlight a menu selection. Press the **A button** to confirm a selection. Press the **B button** to cancel a selection or return to the previous menu.

STORY

Eight years after the Strider Wars ended, Earth resumed its expansion into space. The central government grew weak, and power passed to the major corporations funding the exploration and exploitation of new planets. Each of these corporations maintained a private force of mercenary soldiers to enforce its will, and law became largely a matter of "Might Makes Right."

As *Unreal II – The Awakening* opens, you are John Dalton, a Marshal in the Terran Colonial Authority. The TCA is an undermanned police force that patrols the outer reaches of space. Your job is similar to that of a Marshal in the Old West — you are the lone representative of governmental law and order, charged with keeping the peace in a vast and unruly territory.

MAIN MENU



SINGLE PLAYER: Begin a new game or load a saved game. You must select your existing profile or create a new one. See "Profiles" on page 7 for details. You can select either Normal or Hard difficulty.

CO-OPERATIVE: Play through the story with a friend. Make sure a Xbox controller is connected to controller port 2. To start a Co-op game, Player 2

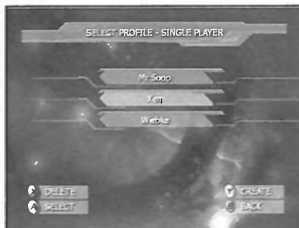
must press the **START** button on the controller connected to controller port 2. If one player dies, the other player may heal him by pressing the Use button. If both players die, the game ends.

XMP: Play an Expanded Multiplayer Game against other players with Xbox Live or via System Link.

XMP Tutorial: Receive instruction on how the XMP game mode functions.

OPTIONS: Configure the game settings to your preferences. See "Options Menu" on page 7 for details.

PROFILES



Unreal II – The Awakening uses a profile system to save and load game data. Prior to starting a game, loading a game or entering the Options Menu, you are asked to select a profile or create a new one. Game progress and options settings are saved to the profile. You can save up to five profiles and each profile requires 18 blocks of memory on your Xbox Hard Disk.

Creating a Profile

To create a profile, press the **Y** button on the Select Profile screen. Enter your name at the New Profile screen. Use the **directional pad** or **left thumbstick** to highlight a letter and press the **A** button to select the highlighted letter. Once you've entered your name, select **DONE** and press the **A** button to save your profile.

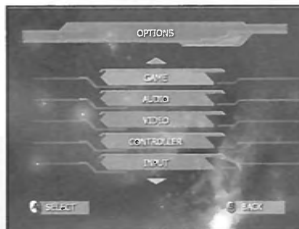
Selecting a Profile

To use an existing profile, use the **directional pad** or **left thumbstick** to select a profile from the list on the Select Profile screen and press the **A** button. This will load your saved settings and game progress.

Deleting a Profile

To delete an existing profile, use the **directional pad** or **left thumbstick** to select a profile from the list on the Select Profile screen and press the **X** button. Press the **A** button to confirm the deletion or press the **B** button to cancel.

OPTIONS MENU



In the Options menu, you'll find several sub-menus that allow you to configure *Unreal II – The Awakening* just the way you like it. After choosing a profile, use the **directional pad** or **left thumbstick** to move through the menus and select items. Press the **A** button to confirm your choice. Press the **B** button to save your settings and return to the Main Menu.

GAME

Gore Level – Set the level of bloody detail: None, Medium or Full.

Show Subtitles – Turn the dialog subtitles ON / OFF.

Show Objectives – Turn the on-screen objective display ON / OFF.

Auto Switch Weapon – With Auto Switch Weapon turned ON, each time you pick up a new weapon, that weapon will be automatically equipped.

Crosshair Glow – When Crosshair Glow is turned ON, the crosshairs in the middle of the HUD will glow when a target is in your sights.

Radar – With Radar ON, the Radar interface will display in XMP Mode.

AUDIO

Adjust the volume of the in-game music and sound effects. Audio settings are displayed on a scale of 0 to 100, with 100 being the loudest setting. Use the **left thumbstick** or **directional pad** to decrease or increase the value. You may also turn ON or OFF the Message Beep that plays when new text messages are displayed.

VIDEO

Adjust the screen brightness, contrast and gamma. Video settings are displayed on a scale of 0 to 1.00, with 1.00 being the highest setting. Use the **left thumbstick** or **directional pad** to decrease or increase the value.

CONTROLLER

CONFIGURATION

There are four controller configurations. Use the **directional pad** or the **left thumbstick** to choose one. Press the **B** button to confirm your choice.

OPTIONS

Look X Sensitivity – Adjust speed of looking left and right.

Look Y Sensitivity – Adjust speed of looking up and down.

Invert Look Y – With Invert Look Y ON, moving the **right thumbstick** up will cause your view to tilt down and moving the **right thumbstick** down will cause your view to tilt up.

Spring Look Y – With Spring Look set to ON, your crosshair will slowly return to center when you release the Look control.

Vibration – Turn the Xbox controller vibration function ON / OFF.

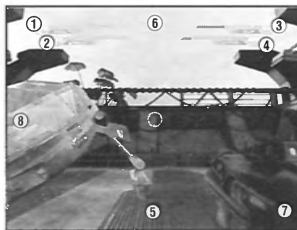
CHANGE NAME

To change your name, use the **directional pad** or **left thumbstick** to highlight a letter and press the **A** button to select the highlighted letter. Once you've entered your name, select DONE and press the **A** button to save your profile.

CREDITS

View a list of people who brought you this fine product.

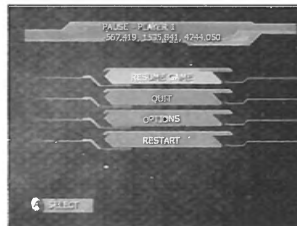
SINGLE-PLAYER HEADS-UP DISPLAY



Game information is displayed in the Heads-Up Display (HUD).

1. **Health Meter:** Indicates your current health.
2. **Shield Meter:** Shows the power remaining in your shield.
3. **Clip Meter:** Shows the amount of ammo left in your current clip.
4. **Ammo Meter:** Shows how much ammo you have in reserve.
5. **Subtitles:** Subtitles for spoken text appear at the bottom of the screen.
6. **Objectives:** Press the **Black** button to display your current objectives.
7. **Extra Equipment:** This icon is displayed when you have additional equipment that is ready to be deployed.
8. **Dialog Options:** When you have response choices for dialog, the response options will be displayed here.

PAUSE MENU



Press the **START** button to pause the game and bring up the Pause Menu. Use the **left thumbstick** or **directional pad** to select an option and press the **A** button to confirm.

Resume Game: Get back to fraggin'.

Quit: Give up and let the bad guys win.

Options: Adjust gameplay settings. See "Options Menu" on page 7 for details.

Restart: Start the current level over again.

TERRAN MILITARY HARDWARE

Dispersion Pistol

Alternate Names: LEPEW-13 or "Law Enforcement Personal Energy Weapon, Type 13," also known by cops as a "Dispersion Pistol," or more derisively as a "popgun."



Ammo: Does not need ammo; recharges from a small quantum source in the handle.

Primary Fire: A fairly low-power, slow-moving quantum energy pulse.

Alt-Fire: A pulse with a higher energy level. The weapon charges up over time, stores the charge in a capacitor, and releases a higher-power blast.

Uses: While the Dispersion Pistol is a fine weapon for a law enforcement officer, it was not designed for military use and is ineffective in high-intensity combat. Use it only as a last resort.

CAR

Alternate Names: M321A21 5.56mm Combat Assault Rifle, standard issue weapon for Military Infantry. Nicknamed the "Duster."



Ammo: Depleted uranium shards.

Primary Fire: Very high rate of automatic fire.

Alt-Fire: A cluster of five shards packed together to form a single, slower-moving slug. The slug will break apart on impact, allowing you to bounce the shards off walls and around corners.

Uses: The CAR is the standard infantry weapon for the Terran Military grunt. Very effective overall — you can hose down an area using the primary fire mode or deliver a lethal single punch with the alternate fire.

Grenade Launcher

Alternate Names: M406 "Hydra" 40mm Grenade Launcher, so-named for the multiple ammo types. Used by a wide variety of military forces.



Ammo: Fires six grenade types:

1. **Fragmentation:** Enormous explosive power and needle-sharp carbo-steel fragments. Absolutely lethal in close quarters.
2. **Toxic gas:** Sprays out a cloud of neurotoxic gas that is so caustic it eats through metal armor.
3. **Incendiary:** Sprays burning phosphorus that sets almost anything on fire.
4. **Smoke:** Lays down a smokescreen to help you escape from your enemies.
5. **Concussion:** Sends out a shockwave that will knock down most enemies.
6. **EMP:** Massive electro-magnetic pulse that will instantly disable almost any electrical system.

Primary Fire: Tapping the primary fire lobs out a grenade that explodes on contact. Holding down the Primary Fire button engages the timing mechanism so the grenades do not explode until after a few seconds have passed.

Alt-Fire: Switches to the next grenade type, if you have any in your inventory. In an XMP game the Alt-Fire control releases a second type of grenade.

Uses: The grenade launcher is an amazingly versatile and effective piece of military hardware, perhaps the best all-around portable weapon in the Terran arsenal.

Shotgun

Alternate Names: M700 12G Semiautomatic Riot Shotgun, affectionately called the "Crowd Pleaser."



Ammo: Uses standard 12-gauge shotgun ammunition.

Primary Fire: A single shell containing 16 pellets.

Alt-Fire: Incendiary slugs with a wider spread and shorter range.

Uses: This gun is absolutely devastating at close range — perfect for clearing a room or taking out an enemy (or small group of enemies) right in front of you. Don't use it at long distances — the effectiveness drops off quickly as the pellets scatter.

Flamethrower

Alternate Names: UA69 "Vulcan" Flamethrower. Used by Urban Assault Units of the Terran Heavy Infantry.



Ammo: Canisters of napalm.

Primary Fire: A jet of flaming gas.

Alt-Fire: A spray of unignited napalm that will stick to almost any surface, and which can be ignited by several of your other weapons.

Uses: This is the most lethal short-range weapon in the Terran arsenal — you can incinerate entire squads of enemies at close quarters.

Magnum

Alternate Names: P400 "Avenger" .50 caliber Semiautomatic Pistol, standard sidearm for Terran Military Special Forces.



Ammo: Uses .50 caliber explosive ammunition.

Primary Fire: A standard single shot. Very accurate and very powerful.

Alt-Fire: A three-round burst with an even bigger punch.

Uses: The Magnum is the most powerful sidearm out there. Best for medium-range targets, when you're too far away for the shotgun, but too close for the sniper rifle.

Rocket Launcher

Alternate Names: MP3 Man Portable Rocket Launcher, Type 3, called the "Shark" by the units that use it (probably because of the weapon's appearance).



Ammo: Self-propelled rockets with four thrusters and explosive warheads that detonate on impact.

Primary Fire: Four missiles bound together as one rocket.

Alt-Fire: Releases the four component parts of a rocket as individual missiles — they are unstable in flight and hence are called "drunken" missiles.

Uses: Nothing beats the primary fire mode for accurate, long-range devastation with significant splash damage. The alt-fire drunken missiles are wildly unpredictable, but are good for saturating an area or providing suppressing fire.

Sniper Rifle

Alternate Names: Type 72 Sniper Rifle, the "Widowmaker." Favorite of snipers in the Special Forces.



Ammo: Fires .50 caliber depleted uranium slugs.

Primary Fire: Fires a single shot.

Alt-Fire: Toggles the scope ON and OFF. Use the **right thumbstick button** to zoom in or out.

Uses: The T72 is a highly specialized weapon that should be used only for long-range sniping, but it does its job very, very well. Its targeting system compensates for wind and other variables to create an instant hit on virtually any target you can see.

ALIEN WEAPONS

Energy Rifle

Alternate Names: Izarian energy weapon, dubbed the "Shock Lance" by Isaak.

Ammo: Izarian energy crystals derived from ASMD technology.

Primary Fire: Generates two fast-moving plasma bolts that do relatively small amounts of damage — but the rate of fire is very high, allowing you to put many bursts on a target in a short period of time.

Alt-Fire: An EMP burst that detonates on impact. The EMP burst is particularly effective against machinery.

Uses: The Shock Lance won't pack much punch against most enemies, but it's lethal to any automated defenses.



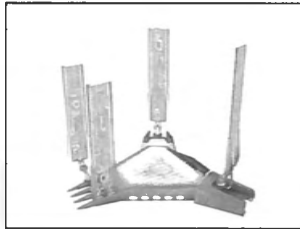
OTHER ITEMS

HEALTH STATION



Step inside the yellow station to recharge your health.

POWER STATION



Step inside the blue station to recharge your shields.

AMMO PICKUPS

Run over ammunition to pick it up. If you already have a full supply of that kind of ammunition, you will not pick it up. Otherwise, the pickup will disappear and the ammo will be added to your inventory.

EXPANDED MULTIPLAYER GAME (XMP)

Join your friends online with the Expanded Multiplayer Game (XMP). You'll need more than a quick trigger finger to dominate the battlefield. You'll need an arsenal of weapons, vehicles and, above all, teamwork.

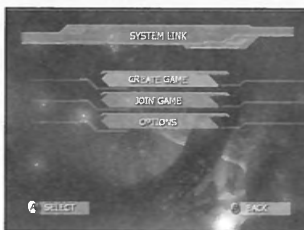
Starting a game

1. Choose XMP from the Main Menu.
2. Select a Profile.
3. Select Xbox Live or System Link.
4. Input verification code (Xbox Live only).
5. Select create game.
6. Set game options (see below).
7. Start the game.

XMP XBOX LIVE GAME OPTIONS

Quick Match

Select Quick Match to search for a game. A Lobby screen appears with the game name, players in the game, and selections to enter the game or go back.



OptiMatch

Search for a particular type of game based on the number of players, maps, etc. Select from the list of matching games. The Lobby screen will appear as in a Quick Match.

Create Session

Set the following options when creating a game:

Maximum Players – Set the maximum number of players in your match.

Private Slots – Choose how many spaces in your game are reserved for Friends.

Level – Select the map in which to play.

Team Talk – Choose ON for players to only hear teammates' conversation, OFF so all players can hear each other.

Time Limit – Choose the length of the game in minutes.

Skill – Set the standard skill level required for players.

Map Cycle – Automatically progress to the next map at the end of a match ON/OFF.

Dedicated Server – Allow your Xbox console to be used as a dedicated host for the match. **Note:** This means that you will not be able to participate in the match.

Friends

Displays your Friends list, their online status, Friend requests sent or received and game invitations.

Options

See XMP Options Menu on page X for details.

Content Download

Download new *Unreal II – The Awakening* content for XMP (eXpanded Multi-Player).

Controller Options

Controller options are the same as a single-player game. See “Controller” on page 8 for details.

XMP SYSTEM LINK GAME OPTIONS

Create Game

Set the following options when creating a game:

Maximum Players – Set the maximum number of players in your match.

Level – Select the map in which to play.

Team Talk – Choose ON for players to only hear teammates’ conversation, OFF so all players can hear each other.

Time Limit – Choose the length of the game in minutes.

Map Cycle – Automatically progress to the next map at the end of a match ON/OFF.

Dedicated Server – Allow your Xbox console to be used as a dedicated host for the match. **Note:** This means that you will not be able to participate in the match.

Join Game

Select the Join Game option to view a list of available matches. Choose a match and you will be taken directly to the Lobby.

Options

See XMP Options Menu below for details.

XMP OPTIONS MENU

In the XMP Options Menu, you’ll find several sub-menus that allow you to configure XMP to the way you like it. Navigation of this menu is the same as the single-player Options Menu.

Online

Appear Offline – Makes you appear Offline to other players. (Xbox Live only.)

Voice Mask – Allows you to alter how other players hear your voice. There are several different Voice Masks available, including: Anonymous, Cartoon, Bigguy, Child, Robot, Darkmaster and Whisper.

Voice Through TV – Make other players’ speech come through the TV speakers, rather than the Xbox Communicator.

Game

Gore Level – Set the level of bloody detail: None, Medium or Full.

Radar – With Radar ON, the Radar interface will display in XMP Mode.

The following remaining options are the same as in a single-player game: Audio, Video, Controller, and Change Name. See “Options” on page 7 for details.

XMP HUD



The XMP HUD differs from the single-player game. It displays team as well as player information.

- 1. Health Meter:** Your current health.
- 2. Shield Meter:** The power remaining in your shield.
- 3. Sprint Meter:** Your remaining sprint power.
- 4. Clip-Ammo Meter:** The amount of ammo in your current clip.
- 5. Remaining Ammo Meter:** The total amount of ammo you have left.
- 6. Artifact Status Icons:** Indicates artifact status. When you’ve stolen one it becomes highlighted. If one has been stolen from your team, it flashes.
- 7. Generator Status Icons:** Indicates if the Energy Generators are offline or online. When online, they will have the color of the team that activated the generator. These change to a team color when hacked.
- 8. Energy Status Icons:** A host of red and green icons. Red indicates offline. Green indicates online. See “Energy Supplies” on page 21 for details.
- 9. Team Energy Meter:** See “Team Energy Meter” below for details.
- 10. Radar:** See “Radar” on page 18 for details.
- 11. Velocity:** The speed at which you are traveling.
- 12. Personal Energy Meter:** Your energy supply for double-jumps, placing deployables, hacking objects, etc. It refuels by draining energy from your team.

TEAM ENERGY METER

The blue bar on the right side of your HUD indicates your team's current energy level. If a team's energy drops to zero, that team loses.

To the right of the bar are icons that indicate technology that is online and offline. If the icon is green, your team can use that technology. If the icon is yellow, that technology is about to go offline. If the icon is red, the technology is offline, and unavailable to your team.

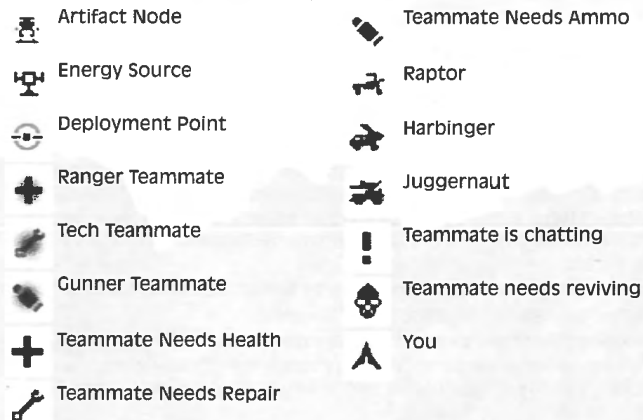
Below are the icons that show up on your team energy meter, from the top:



RADAR

At the bottom-center of the screen, the radar shows points of interest on the map. Artifact nodes, energy sources, deployment points, teammates and vehicles are displayed as icons relative to your position. The color of the map's border (red or blue) indicates the direction of the corresponding team's Artifact Node.

Below are the icons that show up on your radar:



CHARACTER CLASSES

There are three character classes in *Unreal II*: the fast and deadly Ranger, the versatile and resourceful Tech and the powerful and hearty Gunner. All classes have certain skills, but they are not equally capable of performing them. While all classes can hack, the Tech is much faster than the other two classes. All classes can revive fallen comrades, but only the Ranger is capable of healing them once they are revived.

Each soldier enters the battlefield carrying equipment issued to his class. Amongst this equipment are Supply Packs that each class can drop for use by either themselves or a teammate. The Ranger drops medical packs, the Tech drops repair packs, and the Gunner drops ammo supply packs. To deploy a Supply Pack, select the pack from your inventory and press the Primary Fire button. To use a deployed Supply Pack, walk over it.

TECH



As a trained electrical and mechanical engineer, the Tech can not only repair armor and hack into electronic equipment, but also deploy turrets, generators and defenses in the field. Techs wear medium-grade armor, giving them moderate protection from small arms fire and allowing them to access and alter a wide variety of electrical devices.

Skills

Hacking: Techs are more proficient hackers than other classes.

Repair: Techs can repair a teammate by using them.

Weaponry

Assault Rifle: Medium damage, large clip and a high rate of fire.

Shotgun: A close-quarters weapon with a wide spread.

EMP Grenade: Highly effective versus vehicles, armor, and equipment, it also causes electrical burns to flesh targets.

Toxic Grenade: Deploys cloud of caustic gas that is highly deadly with a direct hit, and lingers in a deadly cloud.

Turrets: Rocket turrets and Auto-turrets provide valuable defensive units.

Field Generators: Deployable field walls used to block strategic areas.

Packs

Repair Packs: Supply the user with shield power.

GUNNER



The Gunner specializes in close assault, high-power weaponry and demolitions. Gunners wear heavy-powered armor, offering the most protection available in combat. Unfortunately, it also slows movement. Given their size and strength, Gunners are capable of carrying additional supplies for the entire squad.

Skills

Resupply: Gunners can re-supply a teammate with items and ammo.

Weaponry

Rocket Launcher: A high-powered weapon that has a target-seeking alternate fire.

Flamethrower: A deadly close-quarters weapon. What it lacks in range, it makes up for in power. Alternate fire mode allows defensive use.

Incendiary Grenades: Antipersonnel grenades that burst over a large area, inflicting heavy damage.

Concussion Grenades: Flashbang concussion grenades blind and disorient opponents, and can be used to effectively disrupt vehicles.

Mines: Fatal if touched by an enemy or a vehicle.

Laser Tripmines: Can isolate and protect an area when carefully placed.

Packs

Supply Packs: Supply the user with ammunition and inventory.

RANGER



The Ranger is both angel of mercy and angel of death. His primary purposes are infiltration, assassination and medical aid. Equipped with light, precision weaponry, Rangers wear armor built for speed and concealment. The Ranger is the fastest of the classes, and can jump to greater heights due to his low weight, but the light armor provides little protection from heavy weaponry.

Skills

Healing: Rangers can heal a teammate.

Weaponry

Sniper Rifle: Precision targeting with high-damage, armor-piercing shells, limited only by its small clip.

Pistol: A rapid-fire, high-caliber weapon with high accuracy.

Smoke Grenade: A well-placed smokescreen can effectively nullify an enemy's ability to attack or defend.

Frag Grenade: A fragmentation grenade that provides decent splash damage over a small area.

Shock Lance: An ASMD-based energy weapon, which causes high amounts of electromagnetic damage. It's particularly effective against armor, vehicles and other electronic devices.

Packs

Medical Packs: Supply the user with health.

POINTS OF INTEREST

Using and Hacking

There are many usable items on the map. A reticule will highlight usable items. When you look at a usable item, the reticule changes, showing you can use it by pressing the Use button.

Some of these items can be hacked. Hackable objects can be programmed to react to only one team. A single team can control doors, generators, deployment points and other items. To hack an item, press and hold the Use button. Hacking takes time, so you must hold the Use button until it is completely hacked.

Skills

Each Character class has the ability to perform a skill unique to their class. To use a skill, look at a player, and when the use reticule indicates that you can use the player, press and hold the Use button. **Note:** You can only use skills on players on your team.

Ranger – Replaces lost health.

Tech – Replaces lost shields.

Gunner – Replaces lost ammo.

Note: Players requiring health, ammo or shields will have the corresponding icon placed above their head (next to their name) so that teammates are aware of their needs.

Reviving

All characters may revive fallen teammates displaying a skull next to the player's name. This is achieved by looking at the downed player, when the use reticule is displayed press the use button to revive them.

The Tech and Gunner revive the player to 1 health. The Ranger can fully revive the player to 100 health (see above).

Note: If a fallen teammate does not have a skull above next to their name they cannot be revived. This means that the player has chosen to press Fire to and is waiting to respawn back into the game via a deployment point.

Energy Supplies

As a member of an elite combat unit, you deploy with powerful hardware and skills. However, this does come with a price — energy. Without energy, the war machine soon grinds to a halt. Skills, jump jets, vehicles, turrets, stations, artifact nodes, and deployed items such as mines and field walls require power to continue functioning.



At the start of the match, each team starts with an initial store of energy. However, quick control of more energy sources is vital to establishing an advantage over your enemy. The amount of energy available to your team depends on the amount of energy each team has extracted and collected with generators. To take control of an energy source, hack it to your team by pressing and holding the Use button. Once you have hacked a generator, power will flow to your team. Depriving another team of energy sources will cause them to drain their stores.

The colored lightning bolts on the lower-right side of your HUD display hacked generators. The orange gauge on the lower-right side of your HUD indicates your personal energy. This energy draws from your team's energy — indicated by the larger blue gauge to the right.

As you acquire more energy, more technology comes online for your team. If you lose energy, technology goes offline. The icons on the lower-right of the screen indicate the status of your technology.

As energy rises and technology goes online, your team acquires new inventory from supply stations or supply packs.

Death and Deployment

If you are critically wounded on the battlefield, you can wait for first aid or choose redeployment. Any class can revive a downed teammate, but only the Ranger can fully heal a teammate.

You deploy from Deployment Points throughout the map. While waiting for deployment you may jump from one Deployment Point to the next available Deployment Point by pressing the Jump button. Press the Fire button to lock into a Deployment Point and teleport to the battlefield at the next deployment time. Deployment times are staggered between Deployment Points so if you wish to deploy rapidly, certain points may get you back into the field faster.

Hacking a Deployment Point in the battlefield will give your team a strategic advantage over your opponents. To hack a Deployment Point, simply Use it until it is hacked to your team.

Vehicles

There are several vehicles at your disposal, each with its own capabilities. All vehicles have multiple crew positions. Use the vehicle's cab or turret to enter and take control of that position in the vehicle. Other occupants will be shown at the right of the screen.



Vehicles have unlimited ammunition, but driving or firing a vehicle weapon draws energy from your team. Each vehicle has a turbo boost capability. To engage the turbo, press the Run button.

Artifacts

Each team begins the match holding two of the four artifacts at its base. Your HUD shows the status of each artifact in the lower-left corner. The background color of each artifact indicates the team to which it is registered. An artifact stolen by the opposing team will flash. Artifacts dropped in the world will go dim. If you are carrying an artifact, the border will be highlighted with a yellow glow.



Artifact Node

To steal an artifact, you must enter the enemy's base and pass through its Artifact Node. To claim the artifact for your team, you must return to your base and pass through your own Artifact Node to register the artifact. Your team must gain control of all four artifacts to win the match. An artifact dropped in the field will return to its Node immediately if the controlling team touches it.

Turrets

There are different types of stationary turrets to defend key locations. Stationary turrets offer a good defense. Like vehicles, they deplete team energy while in use.



To control a stationary turret, locate the nearby VR Control Pod and press and hold the Use button. Once inside the Pod, you will take control of the turret and be able to fire. Be aware that the VR Pod is more vulnerable to damage than the turret itself.

Advanced Movement

Sprinting allows for brief, rapid movement. The vertical orange gauge on the lower-left side of your HUD indicates the adrenaline available for sprinting. You sprint by pressing and holding the Run button. The large vertical blue gauge to the left of the Sprint Gauge indicates your overall speed. Adrenaline restores over time and uses no power to recharge.

Jump jets give you a brief burst of upward momentum, allowing you to jump higher and farther. Jump jets can be engaged at any point after you jump by pressing the Jump button again. The timing of the jump allows

for a myriad of jumping capabilities, ranging from super-high jumps, to distance jumps, to the softening of a landing from a great height.

The design of jump jets differs slightly from class to class to meet the restrictions of their weight and capabilities. Jump jets draw energy from your power armor each time they are engaged, and can only be engaged once per jump. Combining mantling with jump jets allows a skilled combatant to reach a variety of locations.

GAME TIPS

- Keep moving. A moving target is more difficult to hit than a stationary one. Strafing is a great way to avoid getting shot while keeping your crosshair on your enemy. Use it or lose it!
- Weapons with explosive payloads, such as the Rocket Launcher, create "splash damage." Use this to hurt your enemies by aiming near them or on the ground in front of them. A couple of good splashes will take out your opponent in no time.
- Many weapons are great for close combat, while others are better suited for long-distance play. For instance, the shotgun is great in close quarters while the zoom of the Sniper Rifle makes it the ultimate long-range gun.
- Many of your weapons cause splash damage that will injure you if they explode nearby. Be careful where you shoot.
- If you're unsuccessful jumping to a spot that looks accessible, hold down the Jump button to "mantle" and you may be able to pull yourself up.

ADVANCED TECHNIQUES

- Some weapons will cause momentary panic among your enemies. Take advantage of their disorientation.
- Dead enemies are often a great source of ammo and extra energy.
- You can ricochet shots off walls and around corners to take out an enemy. Both the Grenade Launcher and the ait-fire function on the CAR are effective ricochet weapons.
- Use cover. Your enemies will.
- The Flamethrower is a much more versatile weapon in XMP than in the single-player game. Try using it in a low-gravity environment.
- Need to go vertical in a hurry? Try firing a concussion grenade at your feet as you jump.

CREDITS

Tantalus

Interactive

Steven Bennetts
Lead Programmer

Sean O'Sullivan
Scott Ashton
Stuart McMahon
Matthew Hall
Programmers

Conor O'Kane
John Zheng
Adam Moder
Artists

Peter Simpson
Ben Kosmina
Peter Burns
Testers

John Szoke
Producer

Andrew Bailey
Chief Technical Officer

Arthur Kakouris
Office Manager

Trevor Nuridin
Systems Manager

Tom Crago
Chief Executive Officer

Special Thanks

Trevor Nuridin
Rohan Westbury
Sarah van Rompaey
Graeme Scott
Adam Lancman
Scion
Legend

Atari

Steve Ackrich
Executive Producer

Peter Wyse
Senior Producer

Tim Hess
David T. Brown
Producers

Steve Allison
V.P. of Brand Marketing

Jean Raymond
Chris Mollo
Directors of Brand Marketing

Richard Iggo
Scott McCarthy
Brand Managers

Kristine Keever
Director of Marketing Communications

Steve Martin
Director of Creative Services

Elizabeth Mackney
Director of Editorial & Documentation Services

David Gaines
Art Director

Brenda Girolamo
Graphic Designer

Chris Dawley
Documentation Specialist

Norm Schragner
Copywriter

Michael Gilmartin
Director of Publishing Support

Ken Ford
I.T. Manager/Western Region

Michael Vetsch
Manager of Technical Support

Donny Clay
Q.A. Supervisor/Manager

Andrew LeMat
Arif Sinan
Lead Testers

Jason "Method" Johnson
Brandon "Show Nuff" Reed
Cherlyn "Bunny" Rocha
Joe "Bunny Killa" Acedillo

Jason "Sorbet" Pope
Tom "Pussy-Willow"

Andrade
Jason "Busta" Kausch
Ray Cicero

Albino Flores
Mark Alibayan
Helen Hinchcliff

Ted Tomasko
Mark Florentino
Carl Vogel

Howell Selburn
Mark Huggins
Scott Bigwood

Scott Rollins
Testers

Tim Campbell
Director, New Business Development

Mark T. Morrison
Content Manager

Brandon Smith
Senior PR Manager

Jon Nelson
Director, Online

Kyle Peschel
Senior Producer, Online

Gerald "Monkey" Burns
Senior Programmer, Online

Richard Leighton
Senior Web Designer, Online

Sara Borwick
Online Marketing Manager

Special Thanks

Epic Games
Cuck Nunez
Dave Strang
Cecelia Hernandez

ATARI

Melbourne House

Graeme Scott
Technical director
Sarah van Rompaey
Producer

ATARI Melbourne House QA

Alex McNelly
Andy Cohn
Grigor Pedrioli
Glenn Harrison
Hyang Sook Lee
Will van Rompaey
Sean Baxter
Laura Martino
Glen Horrigan
Bruce Donaldson
Gus Weate
Clint Reid

Legend Entertainment

Design by Unreal II Team

Production

Mike Verdu
*Project Director,
Producer, Game Design*

Glen Dahlgren
*Project Director,
Producer, Game Design*

Scott Dalton
*Level Design (Marsh, Hell,
Acheron, Severnaya,
Obolus, Dorian Gray),
Effects, Game Design*

Grayson Edge
*(Tutorial, Sanctuary,
Sulferon, Janus, Avalon),
Game Design*

James Parkman
*(Na Kojia Abad, Drakk
Homeworld, Vault,
Dorian Gray), Additional
Effects, Game Design*

Matthias Worch
*(Tutorial, Atlantia,
Avalon), Additional
Programming, Game
Design*

Art

Paul Mock
*Art Lead, Terrain
Textures, Additional UI /
HUD assets*

Travis Doggett
Art

Kevin Johnstone
*Character / Weapons
Skins*

Dawid Michalczuk
*Textures, Additional
Concept Art, Skyboxes*

Anthony Pereira
*Character / Weapon
Concept and Design,
Additional Skins, UI / HUD
Design / Assets*

Hugh Riley
*Animation Lead,
Additional Character
Modeling, Skeletal
Animation Scripting*

John Sheffield
*Weapon Animation /
Modeling, Character
Modeling*

Marc Tetreault
*Textures, Weapons Skins,
Additional Cut-Scene
Assets*

Ted Warnock
*Cinematics, Additional
Animation*

Robert Wisniewski
*3D modeling Level
Architecture / Assets,
Additional 3D Modeling
and Texturing
Characters/Weapons*

Programming

Mark Poesch
*Technical Lead, Producer,
QA Director*

Mike Baldwin
*Dialog System, Additional
AI*

Sam Brown
*Asset Management,
Localization, Additional
Programming*

Mike Fox
*AI Lead, Additional
Gameplay*

Chris Hargrove
*Skeletal Animation
System, Systems
Programming, Additional
Character Design and
Implementation*

Aaron Leiby
*Game / Systems
Programming, Game
Design*

Story/Voice

Bob Bates
*Final Story, Character
Dialog, Voice Direction*

Grant Roberts
*Voice Integration,
Additional Dialog,
Associate Producer*

Quality Assurance

Craig Lafferty
*QA Manager, Associate
Producer, Unreal II
Website*

Information Systems

Duane Beck
*Network Administration,
Localization /
Programming support*

Administration

Rosie Freeman
*Office Manager, Extra-
special Thanks*

Peter Carlson
*Additional Scripting &
Cinematics*

Ryan Pendleton
*Additional Level Design
(Severnaya)*

Carl Vogel
*Josh Strom
Robert MacRae
Scott Rollins
Wilfredo Dimas
Milton Laureano
Arif Sinan
Kim Jardin
Howell Selburn
Peter Soddinow
Joe Taylor
Additional QA (Atari
On-Site Testing Team)*

Fabrizio Bianchi
*Christian Bradley
Karl Heck
Heuristic Park
Martin Sawkins*

Joel Walden
Additional Art

Special thanks to NASA
for allowing the use of
images from the NSSDC
Image Catalog.

Thanks also to Owen
Keating, Jean-Paul
LeBreton, and Ramon
Martinez for permission
to use their images.

Jess Crable
Warren Marshall
Additional Programming

Music and Sound Effects For Tommy Tallarico Studios, Inc.

Jack Wall
Clint Bajakian
Music

Joey Kuras
Sound Design and Effects

Artistry Entertainment, Inc.

Jeremy Soule
Crispin Hands
Music

Saki Kaskas
Obolus Guitars

Weddington Productions

Brian Min
Executive Director

Mark Mangini
Sound Designer

Steve Lee
Sound Designer

Chance Thomas
Richard Schneider
*Additional Music and
Sound Effects Music*

Eric Heberling
Sound Effects

Voice Production

Kathleen Bober
Voice Management

Andy Frazier
Post-Production

Voiceover Cast

Michael Mack
Marshal John Dalton

Jackie Underwood
Aida

Jeff Baker
Isaak

Grant Roberts
Ne'Ban

Michael Kramer
Sector Commander

Jeff Baker
Ezechieil Meyer

Clinton Brandhagen
Danny Miller

Chris Stezin
Raff

Susan Allenbach
Computer Voice

Jeff Baker
Clinton Brandhagen
Sam Eimore
Leo Erickson
Rick Fouchez
Wes Johnson
James Kinstle
Michael Kramer
Steve Lee
John Lescault
Tim Marrone
Scott Morgan
Sean Pratt
Jefferson Russell
Stephen Schmidt
Chris Stezin
Fred Strother
Bill Thomas
Christopher Walker
*Marines, Mercs, &
Scientists*

Kathleen Bober
Brandy Burre
Christine Eads
Dani Englander
Jennifer Phillips
Female Mercs

For Cue Studios

Doug Johnston
Harry Evans
Rich Isaac
Recording Engineers

For Webtone Studios

Greg Weber
Associate Director

Steve Duell
Engineering

UNREAL II: XMP Legend Entertainment

Design

Scott Dalton
Designer

Tech

Aaron Leiby
Tech Lead / Weapons

Mike Baldwin
Game Programmer

Peter Carlson
Vehicles / Turrets

Mike Fox
Additional Programming

Mark Poesch
Technical Advisor

Art

Robert Wisniewski
Environmental Lead

Hugh Riley
*Character Lead /
Animation*

Jay Hawkins
Concepts

Louis Lu
*Characters / Models /
Textures*

Travis Doggett
*Vehicles / Models /
Textures*

Marc Tetreault
Textures / Models

Ted Warnock
Additional Animation

Dawid Michalczyk
Concepts / Models

Matthias Worch
Additional Models

Scott Dalton
Special Effects

Level Design

Grayson Edge
Garden / Sunset Beach

James Parkman
Lowlands / Na Koja Abad

Scott Dalton
*Rampant / FreeFall /
Sirocco*

Production

Bob Bates
Executive Producer
Grant Roberts
Producer

Sound

Grant Roberts
Sound Effects

Quality

Assurance

Craig Lafferty
QA Manager

Information

Systems

Duane Beck
MIS Manager

Administration

Rosie Freeman
*Office Manager / Extra
Special Thanks!*

Epic Games

Cliff Bleszinski
Executive Producer

Erik De Neve
James Golding
Warren Marshall
Steve Polge
Jack Porter
Andrew Scheldecker
Tim Sweeney
Daniel Vogel
Joe Wilcox
Engine Programming

Mark Rein
Jay Wilbur
Biz

Anne Dube
Office Manager

Special Thanks

Special thanks to the
entire Unreal2 team!
...to everyone at
BeyondUnreal for their
support
...to all our beta testers
who helped make XMP
great

ATARI WEB SITES

To get the most out of your new game, visit us at:

<http://www.us.atari.com>

To send e-cards to your friends, download wallpapers, or get access to other free stuff, visit our Freebies section at:

www.us.atari.com/freebies

If you would like to chat with other gamers, as well as developers, visit our Community Forum area at:

www.ataricomunity.com

Kids, check with your parent or guardian before visiting any web site.

Chat Messages: Atari does not monitor, control, endorse, or accept responsibility for the content of chat messages. You are strongly encouraged not to give out identity or other personal information through chat message transmissions. Kids, check with your parent or guardian if you are concerned about any chat you receive.

Use of Atari web sites is subject to terms and conditions, which you can access at:

www.us.atari.com/terms_of_service.asp

TECHNICAL SUPPORT (U.S. & CANADA)

Help Via the Internet

Up-to-the-minute technical information about Atari products is generally available 24 hours a day, 7 days a week via the internet at:

<http://www.atarisupport.com>

Through this site you'll have access to our **FAQ** (Frequently Asked Questions) documents, our **Hints/Cheat Codes** if they're available, and an **E-Mail** area where you can get help and ask questions if you do not find your answers within the **FAQ**.

Note: In the event we must send you a Hint Sheet, FAQ document, patch or update disc via E-mail, we may require verifiable consent from a parent or guardian in order to protect children's privacy and safety online. Consent Forms are available at the web site listed above.

Help Via Telephone in the United States & Canada

For phone assistance, call **Atari Technical Support** at (425) 951-7106. Our **Interactive Voice Response** system is generally available 24/7, providing automated support solutions immediately.

This console-based product has automated support, which includes information such as gameplay tips, information on Control Keys, possible Cheat Code combination keys, and instructions for finding secret screens and/or additional game levels (if these type of items exist and are made available for this particular product).

Great News! We've improved our Automated Systems so that you can get product-specific Troubleshooting help more quickly. All you need to do is enter the product's Part # when prompted to do so. This will take you directly to all of our known issues and solutions for this title. The product's Part # is located in several places (on the CD label, Game Pak, package and/or plastic disc case, if applicable) and is usually identified by a number such as **04-12345**. When prompted by the Automated System, enter the **last five digits** of your product's Part #. (For example, Part # 04-12345 would require that you enter the "12345" portion of the number for that product.) **Note:** Some products simply feature a five-digit Part # without an "04-" prefix.

Live support is generally available Monday through Friday, 8:00 AM until 6:00 PM (Pacific Time). Note: We may be closed on major holidays.

Product Return Procedures in the United States & Canada

In the event our technicians at (425) 951-7106 determine that you need to forward materials directly to us, please include a brief letter explaining what is enclosed and why. Make sure you include the Return Merchandise Authorization Number (RMA#) supplied to you by the technician, and your telephone number in case we need to call you. You will receive the mailing address when the technician gives you the RMA#. Any materials not containing this RMA# will be returned to you unprocessed.

Warranty Policy in the United States & Canada

If our technicians determine that the product storage medium is found to be defective within ninety (90) days of original purchase, (unless otherwise provided by applicable law), Atari will replace the item free of charge, to the original purchaser, if the item is accompanied by the original dated receipt and packaging.

END-USER LICENSE AGREEMENT

IMPORTANT — READ CAREFULLY: Please be sure to carefully read and understand all of the rights and restrictions described in this End-User License Agreement ("EULA").

AGREEMENT

This document is an agreement between you and Atari, Inc. and its affiliated companies ("Company"). The enclosed software game disc(s), cartridge or Game Pak ("Software") and any accompanying printed materials are licensed to you only on the condition that you accept all of the terms contained in this EULA.

By opening this package and installing or otherwise using the Software you agree to be bound by the terms of this EULA. If you do not agree to the terms of this EULA you may not install or use the Software and within 15 days of purchase you must call the Tech Support telephone number listed in the manual accompanying the Software (the "Manual"). Select the Automated Phone System's Main Menu option for Consumer Services and follow the prompts.

You will be given a Return Merchandise Authorization number (RMA #) by the technician. You then have 15 days from the date of this contact to return the Software in its protective covering, the Manual and the original sales invoice to the address supplied to you.

If this is a PC product, when you install the Software you will be asked to review and either accept or not accept the terms of the EULA by clicking the "I Accept" button. By clicking the "I Accept" button you acknowledge that you have read the EULA, understand it and agree to be bound by its terms and conditions.

COPYRIGHT

The Software is protected by copyright laws and international copyright treaties, as well as other intellectual property laws and treaties. All title and copyrights in and to the Software (including but not limited to any images, photographs, animations, video, music, text and "applets" incorporated into the Software) and any printed materials accompanying the Software are owned by the Company or its Licensors.

GRANT OF LICENSE

The Software is licensed and not sold to you and its use is subject to this EULA. The Company grants you a limited, personal, non-exclusive license to use the Software in the manner described in the user documentation. The Company reserves all rights not expressly granted to you in this EULA.

PERMITTED USES

1. If the Software is configured for loading on a hard drive, you may install and use the Software on a single computer.
2. You may make and maintain one copy of the Software for backup and archival purposes, provided that the original and copy of the Software are kept in your possession.
3. You may permanently transfer all your rights under this EULA, provided you retain no copies, you transfer all of the Software (including all component parts, the media and printed materials and any upgrades) and the recipient reads and accepts this EULA.

RESTRICTIONS

1. You may not delete or obscure any copyright, trademark or other proprietary notice on the Software or accompanying printed materials.
2. You may not decompile, modify, reverse engineer, disassemble or otherwise reproduce the Software.
3. You may not copy, rent, lease, sublicense, distribute, publicly display the Software, create derivative works based on the Software (except to the extent expressly permitted in the Editor and End-User Variation section of this Agreement or other documentation accompanying the Software) or otherwise commercially exploit the Software.
4. You may not electronically transmit the Software from one computer, console or other platform to another or over a network.
5. You may not use any backup or archival copy of the Software for any purpose other than to replace the original copy in the event it's destroyed or becomes defective.

EDITOR AND END-USER VARIATIONS

If the Software includes a feature that allows you to modify the Software or to construct new variations (an "Editor"), you may use such Editor to create modifications or enhancements to the Software, including the construction of new levels (collectively the "Variations"), subject to the following restrictions. Your Variations: (i) must only work with the full, registered copy of the Software; (ii) must not contain modifications to any executable file; (iii) must not contain any libelous, defamatory or other illegal material, material that is scandalous or invades the rights of privacy or publicity of any third party; (iv) must not contain any trademarks, copyright-protected work or other property of third parties; and (v) may not be commercially exploited by you, including but not limited to making such Variations available for sale or as part of a pay-per-play or timesharing service.

TERMINATION

This EULA is effective until terminated. You may terminate this EULA at any time by destroying the Software. This EULA will terminate automatically without notice from the Company if you fail to comply with any provisions of this EULA. All provisions of this EULA as to warranties, limitation of liability, remedies and damages will survive termination.

LIMITED WARRANTY AND DISCLAIMER OF WARRANTIES

You are aware and agree that use of the Software and the media on which is recorded is at your sole risk. The Software and media are supplied "AS IS." Unless otherwise provided by applicable law, the Company warrants to the original purchaser of this product that the Software storage medium will be free from defects in materials and workmanship under normal use for ninety (90) days from the date of purchase. The warranty is void if the defect has arisen through accident, abuse, neglect or misapplication. If the Software fails to conform to this warranty, you may at your sole and exclusive remedy, obtain a replacement free of charge if you return the defective Software. Follow the Product Return Procedures described in the Manual. The Company does not warrant that the Software or its operations or functions will meet your requirements, or that the use of the Software will be without interruption or error.

TO THE FULLEST EXTENT PERMISSIBLE UNDER APPLICABLE LAW, EXCEPT FOR THE EXPRESS WARRANTY SET FORTH ABOVE, THE COMPANY DISCLAIMS ALL WARRANTIES, EXPRESS OR IMPLIED, INCLUDING AND WITHOUT LIMITATION, THE IMPLIED WARRANTIES OF MERCHANTABILITY AND FITNESS FOR A PARTICULAR PURPOSE AND NON-INFRINGEMENT. EXCEPT FOR THE EXPRESS WARRANTY SET FORTH ABOVE, THE COMPANY DOES NOT WARRANT, GUARANTEE OR MAKE ANY REPRESENTATION REGARDING THE USE OR THE RESULTS OF THE USE OF THE SOFTWARE IN TERMS OF ITS CORRECTNESS, ACCURACY, RELIABILITY, CURRENTNESS OR OTHERWISE. SOME JURISDICTIONS DO NOT ALLOW THE EXCLUSION OF OR LIMITATIONS ON IMPLIED WARRANTIES, SO THE ABOVE EXCLUSIONS AND LIMITATIONS MAY NOT APPLY TO YOU.

LIMITATION OF LIABILITY

IN NO EVENT WILL THE COMPANY OR ITS EMPLOYEES OR LICENSORS BE LIABLE FOR ANY INCIDENTAL, INDIRECT, SPECIAL, CONSEQUENTIAL OR PUNITIVE DAMAGES, OR ANY DAMAGES WHATSOEVER (INCLUDING, WITHOUT LIMITATION, DAMAGES FOR INJURY TO PERSON OR PROPERTY, FOR LOSS OF PROFITS, BUSINESS INTERRUPTION, LOSS OF BUSINESS INFORMATION, LOSS OF PRIVACY, FAILURE TO MEET ANY DUTY AND NEGLIGENCE) ARISING OUT OF OR IN ANY WAY RELATED TO THE USE OR INABILITY TO USE THE SOFTWARE, EVEN IF THE COMPANY OR AN AUTHORIZED REPRESENTATIVE OF THE COMPANY HAS BEEN ADVISED OF THE POSSIBILITY OF SUCH DAMAGES. SOME JURISDICTIONS DO NOT ALLOW THE EXCLUSION OF LIABILITY FOR INCIDENTAL OR CONSEQUENTIAL DAMAGES, SO THE ABOVE EXCLUSION MAY NOT APPLY TO YOU.

IN NO EVENT WILL THE LIABILITY OF THE COMPANY FOR DAMAGES WITH RESPECT TO THE SOFTWARE EXCEED THE AMOUNTS ACTUALLY PAID BY YOU FOR THE SOFTWARE.

CHOICE OF LAW AND VENUE

This EULA is governed by the laws of the United States of America and the State of New York, exclusive of its conflicts of law provisions. The exclusive venue for litigation regarding or arising from this EULA is New York County, New York and you agree to submit to the Jurisdiction of the courts of New York County, New York for any such litigation.

MISCELLANEOUS

If any provision or portion of this EULA is found to be unlawful, void, or for any reason unenforceable, it will be severed from and in no way affect the validity or enforceability of the remaining provisions of the EULA.

This EULA constitutes the entire agreement between you and the Company regarding the Software and its use.

Unreal® II — The Awakening © Epic Games, Inc. 2003[-2004]
ALL RIGHTS RESERVED. Unreal is a registered trademark of Epic Games, Inc.

Unreal® II — The Awakening was created by Legend Entertainment, an Atari studio in collaboration with Tantalus Interactive. All other trademarks are the property of their respective owners. Manufactured and marketed by Atari, Inc., New York, NY.

Microsoft, Xbox, Xbox Live, the Live logo, and the Xbox logos are either registered trademarks or trademarks of Microsoft Corporation in the United States and/or other countries.

01123