

XBOX

LIVE ONLINE ENABLED



DRAG RACING 2004



<http://www.replacementdocs.com>



Bethesda
SOFTWARES
a ZeniMax Media company

Bethesda
SOFTWARES
a ZeniMax Media company



SAFETY INFORMATION

About Photosensitive Seizures

A very small percentage of people may experience a seizure when exposed to certain visual images, including flashing lights or patterns that may appear in video games. Even people who have no history of seizures or epilepsy may have an undiagnosed condition that can cause these "photosensitive epileptic seizures" while watching video games.

These seizures may have a variety of symptoms, including lightheadedness, altered vision, eye or face twitching, jerking or shaking of arms or legs, disorientation, confusion, or momentary loss of awareness. Seizures may also cause loss of consciousness or convulsions that can lead to injury from falling down or striking nearby objects.

Immediately stop playing and consult a doctor if you experience any of these symptoms. Parents should watch for or ask their children about the above symptoms – children and teenagers are more likely than adults to experience these seizures.

The risk of photosensitive epileptic seizures may be reduced by sitting farther from the television screen, using a smaller television screen, playing in a well-lit room, and not playing when you are drowsy or fatigued.

If you or any of your relatives have a history of seizures or epilepsy, consult a doctor before playing.

Other Important Health and Safety Information

The Xbox Instruction Manual contains important health and safety information that you should read and understand before using this software.

Avoid Damage to Your Television

Do not use with certain televisions. Some televisions, especially front- or rear-projection types, can be damaged if any video games, including Xbox games, are played on them. Static images presented during the normal course of gameplay may "burn in" to the screen, causing a permanent shadow of the static image to appear at all times, even when video games are not being played. Similar damage may occur from static images created when placing a video game on hold or pause. Consult your television owner's manual to determine if video games can be played safely on your set. If you are unable to find this information in the owner's manual, contact your television dealer or the manufacturer to determine if video games can be played safely on your set.

Unauthorized copying, reverse engineering, transmission, public performance, rental, pay for play, or circumvention of copy protection is strictly prohibited.

TABLE OF CONTENTS

Xbox Live	2
Controls	3
Overview of Drag Racing	4
The Menu Interface	5
Race	6
Tracks	7
Shop	8
Analyze	8
Options	8
Settings	10
Building a Car	11
Handicapped Racing	12
Classes	13
The Dashboard	14
The Burnout	15
The Staging	15
The Race	16
Setup Tips	17
Engine	17
Transmission	18
Tires	19
Suspension	19
Driver's School	20
Top End Clinic	21

XBOX LIVE™

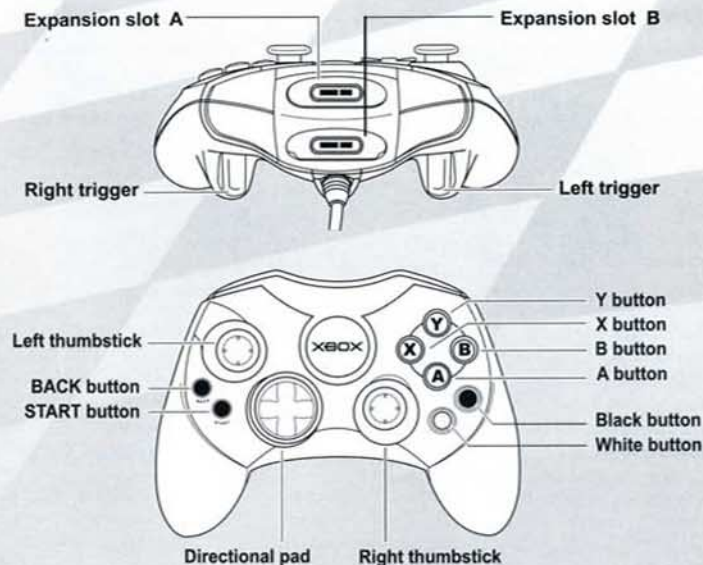
Downloadable IHRA Drag Racing 2004 Content

If you are an Xbox Live subscriber, you can download the very latest content (such as new cars, and more) to your Xbox console.

Connecting

Before you can use Xbox Live, you need to connect your Xbox console to a high-speed or broadband Internet connection and sign up for the Xbox Live service. To determine if Xbox Live is available in your region and for information about connecting to Xbox Live, see www.xbox.com/connect.

CONTROLS



Start	Pause
Back	Quick Look at opponem
ⓐ	Transmission Brake On
ⓑ	Line Lock Toggle
Ⓒ	Reverse On
Ⓓ	Parachute Release
○	Move Camera Out
●	Move Camera In
⬅ DPad	Three step
➡ DPad	Nitrous
⬆ DPad	Shift Up
⬇ DPad	Shift Down
Ⓛ Left Trigger	Brake
Ⓡ Right Trigger	Throttle
Left Thumbstick	Steer Left/Right
Right Thumbstick	Camera Left/Right/Up/Down
Left Thumbstick Button	Reset Camera
Right Thumbstick Button	Next Camera

RACING

Overview Of Drag Racing

A drag race is an acceleration contest between two vehicles from a standing start, over a measured distance. The accepted standard for that distance is either a quarter-mile (1,320 feet) or an eighth-mile (660 feet). A drag racing event is a series of such two-vehicle, tournament-style eliminations. The losing driver is eliminated, and the winning driver progresses to the next round until one driver remains.

The contests are started by means of an electronic device consisting of multicolored starting lights commonly called a "christmas tree." On each side of the tree are seven lights: two small amber lights at the top, followed in descending order by three larger amber bulbs, a green bulb, and a red bulb.

Three light beams cross the starting-line and connect to track-side photocells, which are wired to the tree and electronic timers in the control tower. As the front tires of a vehicle break the first light beam, or pre-stage beam, the pre-stage light on the tree indicates that the car is approximately six inches from the actual starting line. As the racer rolls forward into the stage beam, the front tires are positioned exactly on the starting line. The stage bulb is lit on the tree, indicating the vehicle is ready to race. When both vehicles are fully staged, the starter will activate the tree, and each driver will focus on the three large amber lights on his or her side of the tree.

Depending on the type of racing, all three large amber lights will flash simultaneously, followed four-tenths of a second later by the green light, called a "pro tree." Alternately, the three bulbs will flash consecutively five-tenths of a second apart, followed five-tenths later by the green light, called a "competition tree," or "full tree."

On each run, elapsed time and speed are monitored to determine performance. When vehicles leave the staging beams, they activate an elapsed-time clock, which is stopped when the vehicle passes the finish line. The start-to-finish time is the vehicle's elapsed time (E.T.). Each lane is timed independently. Speed is measured in a 60-foot "speed trap" that ends at the finish line.

The first vehicle that crosses the finish line wins, unless, as in some categories, it runs quicker than its dial-in or index. A racer also may be disqualified for leaving the starting line too soon (red-lighting), leaving the lane boundary (crossing the centerline, touching the wall or guardrail, or hitting a track fixture such as the photocells), or failing to stage.



Select the race style you wish to perform, load events or modify rules and conditions for your selected profile.

THE MENU INTERFACE

IHRA DRAG RACING 2004 features a unique interface that allows you to quickly access the options, features, and information in the game. The interface is made up of a Main Menu bar, a Sub-menu bar, and a Gadget Window. The Main Menu bar is located in the upper left corner of the screen. A Sub-menu bar appears whenever an option in the Main Menu is selected. A Gadget Window appears when a Sub-menu option is selected. The Gadget Window contains useful descriptions, help information, and options that can be adjusted by the user.

The headings on the main menu are as follows:

- Race**
- Tracks**
- Shop**
- Analyze**
- Options**

Race

The race section is where racing action is setup and initiated.

Practice

Practice is simply a single, solo run down the selected track. A timecard is given at the end of the run. No rules are in effect.

Single Race

A single race is a practice race against a random computer opponent or against a human opponent. The race is subject to the selected rule set. Timecards are provided at the end of the run.

Event

An event is a series of single races set up in a single elimination bracket.

Season

To race a season, the user must first setup a list of tracks that will comprise the season in the Tracks menu. Season racing will feature one event per listed track. Each event is run as in a single event, but at the end points are awarded and are accumulated over the season to determine an overall winner. Points are awarded differently for heads-up and bracket events. Point tiebreakers are determined by the driver with the most wins.

Rules

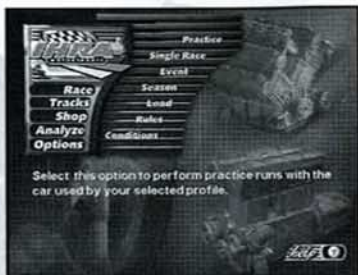
The rules section allows the user to select from the IHRA's pre-defined sets of classes and rules, or the user can create their own custom rule set.

Conditions

Conditions encompass the environmental conditions during a race. Conditions affect the performance of the car as well as the visual presentation of the track.

Weather: Weather conditions affect the performance of the vehicle. For example, engine performance and aerodynamics are affected by the density of the air. The weather can be selected from preset weather conditions, including fully dynamic (e.g., conditions change during the course of the event). The user may also specify the following:

Humidity: Humidity is a measure of the water vapor content of the air.



Wind Direction: Wind direction is measured relative to magnetic north, 0 being due north, 180 due south, etc.

Wind Speed: Wind speed is measured in miles per hour (mph).

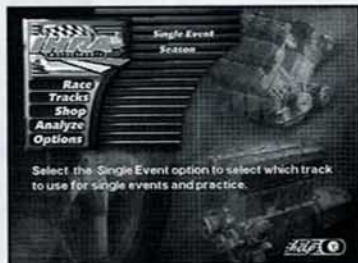
Barometer: Barometric pressure is a measure of the density of the air measured in millimeters of mercury. The range is 25 to 40mm.

Altitude: Altitude is measured in feet above sea level. A value of 0 is at sea level. It is possible to have an altitude below sea level.

Temperature: This is the air temperature as measured at the entrance to the intake system. Temperature is in degrees Fahrenheit (F) and has a range of 40 to 110 degrees.

Tracks

The tracks in IHRA DRAG RACING 2004 are real tracks around the country. A track is selected by choosing the "Track" top-level menu. The user can select the track to be used for single-event racing or compile a list of tracks for use during a season.



Single Event

To select a single event track, select the sub-menu item "Single Event." The screen will display the currently selected track and its description by default. Scroll through the available tracks by highlighting the scroll arrows and pressing the **A** button to select a track. When the desired track is displayed, press the **B** button and the current track will become the selected track.

Season

To select the list of tracks that season racing will use, select the "Season" sub-menu item. The screen will display the available track window (as in the single-event selection), but the description area is replaced by a list box showing the currently selected season tracks (by default the list will contain no tracks). To add a track, scroll through the available tracks by highlighting the scroll arrows and pressing the **A** button to select a track and select "add" when the desired track is displayed. To remove a track from the list, select the track in the list and select "remove".

Shop

Chassis: Configures the body style, paint job, Wheelie bar, Wings, Weights, and loads the default profile for a selected car.

Transmission: Configure Gear Set and Clutch for your selected transmission.

Engine: Configures the Block, Induction, Fuel, Camshaft, and Boost.

Suspension: Configure Rollbar, Steering, and Springs suspension components

Tires: Adjust size, density, and width of tires.

Devices: Adjust Shift Lights, Rev Limiter, Throttle, Delay Box, and Chute components.

Inspection: Examine your car for compliance with the current rules set.

Downloads: For XBOX Live users IHRA DRAG RACING 2004 provides downloadable content. Connect to XBOX Live and select from available downloads.



Analyze

This section allows you to review races and statistical information on racers.

VCR Controls: Allows you to play, fast forward, and analyze data from your race.

Stats: Allows you to analyze statistical information on your driver and current races.



Options

Player

Under the Player tab, you can customize the player name, preset choice of parachute release and burnout staging, and your dashboard display.

Player: This will be the driver name on the selected car.



Name: Provides the player the option to change the player name.

Parachute: Allows you to select whether the parachute will be opened automatically or manually. The control to release the parachute is customizable from the Controls Setup section.

Stage: Allows you to choose if the car will automatically pre-stage and stage before a race. If Auto is selected, you will not control the car until you disengage the autostage.

Tire traction: This indicates the temperature of the tires and its effect on the force applied relative to how much the tires can withstand. As temperature increases, the color on the graph will change. Blue is cold, green is optimal, yellow means you are approaching an above-optimal temperature, and red indicates overheated tires.

Distance gauge: Before a race begins, the distance gauge indicates the distance to the start line (and pre-stage light).

Christmas Tree: Shows a close-up view of the "Christmas tree."

Dashboard: The dashboard in IHRA Drag Racing 2004 is represented as a cluster of gauges that "float" on top of the 3D display. This configuration allows the user to customize the gauges that are displayed. Any item checked will be displayed.

Controls

Controller Selection: Select the controller port used by the current player profile.

Steering: The Steering slider allows adjustment of how the control input is handled. Using the Linear control method will allow the same amount of controller movement for an equal amount of game response. The Non-Linear control method will allow less game response the closer the controller is to the centered position. Altering between the two modes can be useful if you feel the controls seem too sensitive for your play style.



SETTINGS

The Settings window contains options for adjusting how "realistically" IHRA DRAG RACING 2004 plays, volume control, and graphics details. The Settings window is accessed by selecting Options from the Main Menu and then selecting the Settings tab.

The following options are available under Game:

Ability Level: Specifies the skill level of the computer-controlled players. The value relates the ability of the computer players as compared to a pro-level driver. The value can range from Rookie to Pro.

Number Of Racers: Allows the user to specify the total number of players entered into events. This includes both human and computer players. This parameter only applies to event and season racing. Values can range from 2 (you and an opponent) to 32.

Damage: Controls the realism of the damage to the engine (blown engines). Options are: None, Partial, and Full. These options correspond to no damage, minimal engine damage, and full damage to engine components.

Play Videos: Indicates whether the video segments are played at the end of the race.

Audio Volume

The Audio Volume portion of the window contains options for adjusting the relative volume of various sounds. All volumes are expressed in percentage of full volume. Ranges are from 0 (no sound) to 100% (full volume). The following options are available:

Sound Effects: Changes the volume of the sound effects.

Announcer: Changes the volume of the announcer's voice.

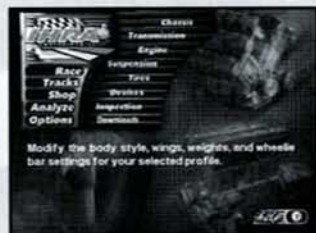
Music: Changes the volume of the music.

Soundtracks: Selects which soundtracks are played during races. Players can select from default soundtracks or user-created soundtracks created from the XBOX Dashboard.

Track Shuffle: When not selected, soundtracks are played in their standard order. When selected, soundtracks are randomly selected.

BUILDING A CAR

IHRA DRAG RACING 2004 allows the user to modify nearly every aspect of the vehicle through the "Shop." The Shop is accessed by selecting Shop from the Main Menu or during a race by selecting the Shop button. When the Shop is accessed, modifications are made to the setup for the current player's car that was selected in the Options - Player screen. Once a custom setup for a car has been created, that car and its custom setup becomes the player's default car and setup on all race screens. If the player wishes to use the standard setup again, this can be selected in the race setup screens.



The following sections of the vehicle can be modified through the shop:

Chassis: Selection and modification of the chassis and aerodynamics.

Transmission: Modify the type and setup of the transmission and gears.

Engine: Customize the engine.

Suspension: Customize the suspension.

Tires: Select the parameters of the tire.

Devices: Set parameters for the delay box, throttle stop, two-step, and dial-in.

Inspection: Examine your car for compliance with the current rules set.

Downloads: For XBOX Live users IHRA Drag Racing 2004 provides downloadable content. Connect to XBOX Live and select from available downloads.

Loading and Saving Setups

IHRA DRAG RACING 2004 allows you to load and save multiple setups that include all information for the Chassis, Engine, Transmission, Wing, Tires, Suspension, and Devices.

The setup Load and Save are accessed from the Sub-menus under the Shop by selecting the White Button for Load or the Black Button for save.

WARNING: Changes made in the Shop are saved only for the duration of the current IHRA DRAG RACING 2004 session, and will be lost if the game is terminated. To save Shop setups for automatic reload, the player must save the settings using Options - Save Settings command.

NOTE: Your changes made in the Shop are automatically saved when exiting the Shop. You don't have to save a setup unless you want a permanent copy of the current setup.

HANDICAPPED RACING

A handicap starting system is used to equalize competition in certain categories. Basically, this system enables vehicles of varying performance potential to compete on an equal basis. The anticipated elapsed times for each vehicle are compared, and the slower of the two cars is given a head start equal to the difference of the two E.T.s.

Through this system, virtually any vehicle can be paired in a competitive drag race.

Here's how it works. Car A has been timed at 14.78, 14.74, and 14.76 seconds for the quarter-mile, and the driver feels that a dial-in of 14.75 is appropriate. Meanwhile, the driver of car B has recorded elapsed times of 12.27, 12.22 and 12.26 on the same track and he has opted for a dial-in of 12.25. Accordingly, car A will get a 2.5-second headstart over car B when the tree counts down to each car's green light. If both vehicles cover the quarter-mile in exactly the predetermined E.T., the win will go to the driver with the best reaction time (quickest reaction to the green light on the tree).

However, if a driver runs faster than his or her dial-in, it is called a "breakout" and the driver is disqualified. If both drivers run quicker than their dial-in, the win goes to the driver who breaks out the least. A foul start, or red-light, takes precedence over a breakout. A driver who red-lights is automatically disqualified even if the opponent ends up breaking out.

A modified form of Handicapped racing is found in several classes where both cars leave the starting line at the same time but are limited to a fixed E.T. These classes use a pro tree and require greater skill in managing top end driving (see Driver's School).

A Pro start is where both lanes' lights activate at the same time.

Note that your vehicle does not have to physically conform to the E.T.s in order to race in the class. For example, your car may be physically capable of running an 8.90 E.T. but you are still allowed to run in the 10.9 class. However, you must make sure your run is at or over 10.90 E.T. or you will breakout and lose. Sometimes this involves hitting the brakes at the finish line to win (see Driver's School). Class selection is made when selecting a race type from the Race menu.

CLASSES

The Rules window, accessed from the Race sub-menu, is where you setup and determine the class of racing. A racing "class" usually refers to a set of rules or restrictions that a car must conform to in order to qualify. In IHRA DRAG RACING 2004, you can choose from many preset classes or you can create your own custom class by specifying various restrictions.



Building a list of rules that a car must "pass" in order to compete creates a class. The list of available rules is displayed in the upper right of the Rules window. The lower left window is the list of rules for the class. Most rules have one or more parameters that must be specified when added to the list. To add a rule, select it from the Available Rules list and select Insert. To remove a rule from the list, select it and select Remove. To modify the parameters of a rule, select the rule and select Edit. You can change the order of the rules by selecting a rule and selecting the up or down arrow.

Rules can also be used as conditional check. For example, if you wanted a class to allow both blown and nitrous cars but wanted the nitrous cars to have a weight advantage, you would need to specify the blown or nitrous rules differently. To do this add the "blowers" rule and then add the "minimum weight per CID" rule. Now select the right arrow. The "blowers" rule becomes a test and the "minimum weight per CID" rule is only in effect if the "blowers" test is true. Most of the rules can be used as tests. There can also be multiple levels of indentation. Very complex rules can be built in this way.

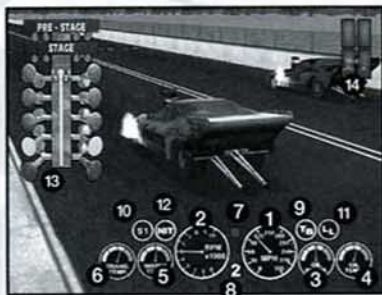
To setup or select an existing race rules or class, open the Rules window by selecting the Rules option from the Race sub-menu. The window shows existing or saved classes. To select an existing class, click on a name. The description of the class will show above the selection window. If this is the class you're looking for, select Load.

Once you have your class modified, you will want to save it. First, select Save from the Rules window. Type in a new name for the class by selecting the name window (located above the list of existing classes) and then type in the new name. Next, specify a file name to save it as by typing in the box below the list of classes. When ready, select Save. The new class is ready to be used.

When restrictions are in place, the Inspection window (accessible from the Shop sub-menu) will alert you with a message when your car does not meet the requirements of the class. You can then individually adjust the components or settings of your car until you do not violate any of the class restrictions.

THE DASHBOARD

The dashboard is a cluster of gauges that provides information on your car during the race. The various gauges are:



- 1. Speedometer:** Indicates the speed of the vehicle.
- 2. Tachometer:** Indicates the RPM of the engine.
- 3. Oil pressure:** Indicates the oil pressure. A low oil pressure is an indicator of engine problems.
- 4. Oil temperature:** Indicates the temperature of the oil. A high temperature indicates a problem with the engine.
- 5. Water Temperature:** Indicates the temperature of the water that is used as an engine coolant. A high temperature indicates a problem.
- 6. Transmission Temperature:** Indicates the temperature of the transmission. A high temperature indicates that the clutch may be slipping too much or that an improperly sized torque converter is being used.
- 7. Shift light:** A user definable light that comes on at an RPM level. IHRA allows two different shift points to be selected by you.
- 8. Gear indicator:** Indicates the current gear.
- 9. Trans-brake indicator:** Indicates that the trans-brake is engaged. The trans-brake will prevent torque from being transferred to the wheels by locking the transmission in 1st and reverse gears at the same time.
- 10. Three-step indicator:** Indicates the state of the three-step. The three-step is a rev limiter used to prevent over-revving the engine.
- 11. Line-lock indicator:** Indicates that the line-lock is engaged. The line-lock will lock the brakes on only the front tires, allowing the rear tires to rotate freely. Line-lock is used primarily for doing a burnout.
- 12. Nitrous Indicator:** This indicates when nitrous oxide injection is activated.
- 13. Christmas Tree Display:** This is the starting light display. The display will be on the left or right depending on the lane you are assigned.
- 14. Distance gauge:** Indicates within a few feet where your opponent is.

THE BURNOUT

The burnout is an important stage in preparing a vehicle for racing. Besides being a spectacular display of power, the burnout is necessary to bring the tires up to optimal temperatures and thus, optimal grip.



A burnout is accomplished by first rolling forward through a portion of the track behind the start line called the "water box" or "bleach box" (bleach was sometimes used to soften the tires). The driver then proceeds to put on only the front brakes using a device called a "line-lock." The engine RPMs are then brought up, and the clutch is engaged if applicable, until the rear tires begin to spin. The throttle is held open a moment longer as the line-lock is let go. The car will roll forward as the throttle is disengaged.

The driver is also allowed to do "dry" burnouts, which consist of opening the throttle on the dry track without engaging the line-lock. The car lurches forward, further warming the tires and clutch.

THE STAGING

Staging takes place after the vehicle's tires are adequately warmed up with a burnout. Staging is detected through the use of light beams and photocells or infrared that detect when the tire breaks the beam. The vehicle moves forward until the small yellow light or lights on the top of the christmas tree (pre-stage lights) are lit.



Once pre-staged, the vehicle is inched forward (about six inches) until the second yellow light or lights on the christmas tree (stage lights) are lit. Once one opponent has staged, the other opponent has a limited time, about 15 seconds, to complete staging and be ready to race. At this point, the drivers must be prepared for the tree to begin its countdown at any time.

It is possible to continue to roll forward out of the pre-stage lights so that only the stage light is lit. This is called "deep staging," and there are benefits and trade-offs to doing it. On the positive side, you are a few inches closer to the finish line and your roll out time (see Glossary) will be shorter and thus your reaction time will be better. On the negative side, your E.T. will be slower because you will have less of a rolling start and will be leaving the start line at a lower speed. There are also some psychological advantages to deep staging that may distract your opponent just enough to give you the better reaction time and a win.

NOTE: You are given a limited amount of time to stage your car (about 2 minutes). If you do not stage within this time, the other car will be allowed to make the run as if it were a bye and you will be eliminated.

THE RACE

Once both opponents are staged, there will be a random amount of time before the race begins (usually only a few seconds). During this time, the car should be put in the proper gear and the trans-brake engaged which will prevent the transmission from transferring power to the wheels. If a two-step (rev limiter) is used, the two-step should be engaged and the throttle planted to the floor. Otherwise the RPMs should be brought up to near the maximum torque's RPM.



If starting with a full tree, each light will illuminate .500 seconds apart. The reaction timer starts as the third amber light illuminates and stops when the car leaves the stage beam. Thus, a perfect reaction time on a full tree would be .500. In most cases, wait for the second or third amber light to flash before releasing the trans-brake and planting the throttle. If you decide to use a delay box, the actual light used to release the trans-brake is programmable.

If starting from a pro tree, all three amber lights will illuminate together followed .400 seconds later by the green light. Depending on your starting style and use of a delay box, you will probably release the trans-brake as soon as the amber lights flash. As your reaction times improve you will need to adjust your release time and possibly use a delay box, to help prevent red-lighting.

Once a race is under way, there is not much left to do but correct the car's direction through steering and hit the shift points. Care must be taken not to over-rev the engine or smoke the tires. If the tires begin to smoke, the driver must back off the throttle in order to regain traction. As the car nears the finish line, the driver must decide if he is under the dial-in time. Sometimes it is necessary to hit the brakes, called "dumping," at the finish line in order to not breakout. In general, you should always try to get to the finish line first, but if you and your opponent both breakout, the one who breaks out the least will win. As you can see, it gets pretty busy at the finish line. This is a part of Bracket racing that few people are aware of or are good at. It takes a lot of practice to be good at the top end. See the Driver's School section for more racing pointers.

A similar set of information is also displayed about your opponent. You can use this information to compare the two runs and see what you did better or determine where you need improvement.

The 60ft times are dependent upon traction, gearing, launch RPM, and staging depth. The 60ft times will not vary greatly with horsepower fluctuations due to the environment. Tire temperature and pressure will help optimize traction.

After the 60ft times, the 330 and 660ft times will indicate how well the car is pulling through the gears. These times, for the most part, are affected by gearing, engine horsepower, and, to a lesser extent, the weather.

The distance after the 660ft mark and the finish line is a measure of the brute horsepower the engine produces. Variables such as weather, camshaft timing, and valve overlap have a large effect on the top end speed.

Loading and Saving Games

During an event or a season, the game can be saved at any time. To save a game, select the Save Game option from the pre-race menu and type a name and description.

You can also load a game at any time. Care must be taken when loading a game because the car setup and player statistics are set to the values present when the game was saved. This means that if you save a game and then participate in another event, then reload the game, it will be as if you never raced the second event. To Load a game, select Load from the Race tab.

SETUP TIPS

Setting up the car is one of the most difficult, most rewarding, and most fun parts of drag racing. The total car setup involves many components. The most important and modifiable areas are Engine, Transmission, Tires, and Suspension.

Engine

There are two engine outputs that the drag racer is concerned with; torque and horsepower. Torque is the raw force the engine generates. It's the kick in the pants you feel when you step on the gas. Horsepower is what gives you top end speed.



Torque is generated mainly through the size of the engine, compression ratio, and type and timing of the camshaft.

Horsepower is a direct function of torque and engine RPM. It is affected more by modifications to the induction and exhaust systems. For the most part, a drag racing engine should have its peak horsepower further in the RPM range.

Using the simulation in IHRA DRAG RACING 2004, you can build nearly any naturally aspirated engine. It is possible and entertaining to input the parameters of a known engine and see how it will respond to different changes. In theory, it is possible to use the changes in a real car and experience similar results. If you build a large engine and have trouble dealing with the torque of the engine transfer (the car will roll to one side), increase the rear springs and the rear anti-roll bar. Also, lowering the center of gravity will help with the car's stability.



Transmission

The transmission consists of a series of gears and a coupling device. The device is either a torque converter, a clutch, or a combination of both. Gear selection is relatively straightforward. Gears should be selected so that the engine is working as much as possible around its peak torque and, in top gear, at its maximum horsepower.

The gear chart is extremely useful in selecting the right gears and shift points. On the chart, each gear is shown with its corresponding speed at RPM. The chart is useful in several ways. The most common use is determining shift points. Each gear is graphed and the intersection from each gear to the maximum torque is drawn (the small vertical lines). Where the line starts down is the optimal shift RPM. Optimal shift points allow the engine to reach maximum horsepower and then drop the engine to optimal or peak torque RPM at a shift. The gears should be adjusted so that both cases are as close as possible. The chart's other useful purpose is gearing for the top end. The top end gear should allow the engine to operate near peak horsepower at the end of the run (1/4 or 1/8th mile). Gear selection becomes a little more complicated once a torque converter or clutch is factored in.

A torque converter uses impellers and a dense fluid to transfer torque from the engine to the transmission. This has several benefits including torque multiplication, reducing the need for a broad range of gears, and not being able to stall the engine. Torque converters can be customized to work effectively with your engine. The multiplication factor is produced because of the configuration of the input and output impellers. The lockup is the RPM at which the torque converter is "locked" to the RPM of the engine. The higher the lockup, the higher the engine can rev before the engine begins to get bogged down. Because of the fluid coupling, the torque converter has a certain amount of loss. The Slip parameter is the amount of slip in the converter. If you want the converter to "lockup" like a manual clutch, a zero slip can be entered.

The manual/automatic transmission settings are a little tricky. In manual mode, the SLIP setting is the maximum amount you want the clutch to slip up until the LOCK rpm. A good value is SLIP=60 and LOCK=4000. In automatic mode, these variables are the typical slip and lock values for torque converters.

Tires

Tires are arguably the most important and least understood aspect of drag racing. All of the interaction between the tire and the ground occur in a relatively small contact patch. IHRA DRAG RACING 2004 allows extensive modeling of the tire and allows you to customize the tire's grip curve both longitudinally and laterally.



For the most part, drag racing tires are concerned with longitudinal forces. Longitudinal forces are directly linked to tire load, shape, pressure and temperature.

Tire load is more or less controlled by the placement of the center of gravity. Ideally, all the weight of the car should be transferred to the rear tires under acceleration. Under full acceleration, the tires should be able to handle the full torque of the engine or the tires will break loose and spin, thus losing traction.

Drag tires generally have low pressures. This allows for the tire to distort under acceleration and produce a larger contact patch. This is also what causes the wrinkled sidewall famous in drag racing.

Tire temperature is controlled only through a pre-race burnout. Burnout time should be consistent and controlled.

The most important parameters on the tire window are the Peak, Stiffness, and Slope. The Peak value is the tire's maximum grip. This peak grip is directly related to the amount of weight on the tire. The Stiffness controls the initial shape of the tire curve and is related to the Slope parameter. The Slope determines how fast the tire's grip is generated. The other parameters should be adjusted so that the tire curve peaks and maintains a peak before falling off. The more distinct the curve peak is, the less consistent the tire will be.

Suspension

The main purpose of a drag racing suspension is to keep the car stable and allow the car to keep the rear tires glued to the ground. Keeping the tires glued to the ground requires the suspension to allow weight to be transferred to the rear tires predictably and as quickly as possible.



The rear suspension should be set up to be stiff enough to allow the full weight of the car to be transferred onto the rear tires without the body or wheelie bars hitting the ground. Using slightly stiffer springs on the side receiving the weight (usually the right) can compensate for weight transfer due to engine torque (lateral transfer).

Front suspension should be set up to allow for the quickest and safest weight transfer to the rear. In general, the front spring rates should be increased to help weight transfer.

DRIVER'S SCHOOL

Drag racing is all about reaction time. In Heads-up drag racing, this is more or less the case, but in Bracket-style racing, there is an additional factor to deal with – the Top End or finish!

Reaction time is important to any style of drag racing. For most people, reaction time is believed to be simply the time that elapses from the green light to the time the driver reacts. In fact, it is much more complex than this.



The "official" definition of reaction time is the time it takes the car to leave the stage beam after the green light is lit. In reality, in order to get a good reaction time the driver must "react" to the second or third yellow light. The reasons for this are complex and involve many factors. Statistically, human reaction time is in the range of .200 seconds so, without leaving before the green light would mean that the best reaction time possible would be in this range.

Probably the largest of factor contributing to reaction time is called "rollout distance." Rollout distance is the distance the car must roll forward before the stage beam will be unbroken. This distance will take a certain amount of time to cover and the driver will need to compensate by leaving earlier. What all this means is that a driver will need to practice in order to "dial-in" his reaction time to compensate for both these (and other) factors.

Here are the top 5 tips for developing consistent and good reaction times.

1. Stage in the same position each time. This will make the rollout distance predictable. A good way to do this is to slowly roll forward into the pre-stage beam, stop, and then roll very slowly forward into the stage beam. You should be very close to the same spot each time.

2. Make sure your car is setup the same for each run. It is not a good idea to make changes to your vehicle once you have dialed it in for a race. Also, changing transmissions or tires can have dramatic effects on the way your car reacts off the line. Make these changes before you dial in.

3. Use the two-step or, at the very least, keep your launch RPM the same each time you race. Since your engine torque varies through the RPM range, it is best to keep your launch RPM near the peak torque. If you go over or under, it will vary the time it takes the car to react.

4. Use the delay box to compensate for your reaction time. Program the box so that you can leave on one of the amber lights (the first is statistically the best). If you don't want to use the delay box, plan on leaving off the third amber light and saying a word to yourself such as "start" before accelerating.

5. Develop a routine that you follow each time you race. This helps keep things under control and your mind focused on the race and not worrying about which button you changed the trans-brake to. Also, do your burnout for the same amount of time each run. Tire temperature can have a broad effect on grip and thus reaction time.

The main point to remember is to be consistent. Not having a great inherent reaction time does not lose races. Being inconsistent does.

TOP END CLINIC

Top end tactics are only applicable to Bracket-style racing. Some believe that top end tactics are just a way to compensate for being inconsistent at the start. While this may be true, there are definitely good reasons to employ tactics at the finish line. Top end racing is arguably more difficult than starting line. At the starting line, you can employ many consistent and measurable tactics to improve reaction time. At the top end, it requires more of an instinctual response.

In Bracket racing, the general objective is to get to the finish line first while either not going over your dial-in or, in the case of a double breakout, by going over your dial-in by the least amount. There is no timer or indicator telling you if you are going to break-out. You must rely on your instincts to tell you if you should take action by slowing down at the finish line, called "dumping."



Dumping involves getting off the gas or even hitting the brakes before the finish line to keep yourself from breaking out or breaking out less than your opponent. Here are the basic "rules" for dumping your opponent:

1. If you are obviously going to lose the race to the finish, your only bet is to dump and hope that your opponent breaks out making you the winner.
2. If you think you are going to breakout, you may decide to let your opponent cross the line first by backing off the gas.
3. If you think your opponent had a better reaction time and you are equal at the finish you may decide to dump and let your opponent cross the line first. His chances of breaking out will be greater than yours.

How do you judge who will cross the finish first? Here are some tactics to help make a better judgment:

1. At the start line, pick an object on the screen that lines up with the front (or any distinct part) of your opponent's car. As you near the finish line, make sure this point is in front or behind you with a quick glance.
2. Use the overhead (helicopter) view. With the overhead view, the front of the car may extend past the front tires differently on different cars, making it hard to judge the actual distance.
3. Use the distance gauge, which indicates within a few feet where your opponent is. This may be cheating a little but it makes up for the lack of sensations that actually occur while racing a real car.

NOTES

CREDITS

Super Happy Fun Fun, Inc.
IHRA 2004 Pit Crew:

Mark Stephen Pierce
SHFF Producer / Snacks and Drinks

Gary Boswood
Project Lead and
Principal Software Engineer

Mike Bailey
Creative Director / 3D Artist

Sterling Brucks
3D Artist

Shaival Varma
Technical Director / Software Engineer

Mark Fortuna
Software Engineer

Very special thanks to our families
for their support.

Bethesda Softworks Team:

Steve Green
Producer

Mike Fridley
Alan Nanes
Rob Gray
Jennifer Noland
Mike Mazzuca
Megan Sawyer
William Noble
Quality Assurance

Pete Hines
Diana Calihanna
Marketing and Promotion

Michael Wagner
Packaging

Vlatko Andonov
President

Chip Ellinghaus
Grant Slawson
Original Music

Absolute Pitch Studios
Rockville, MD
Recording Services

Special thanks to Todd Vaughn
and Harry Kinney.

IHRA Drag Racing 2004 © 2003 Bethesda Softworks LLC, a ZeniMax Media company. Bethesda Softworks, ZeniMax and their respective logos are registered trademarks of ZeniMax Media Inc. Distributed under license from IHRA Motorsports. IHRA Motorsports and the "Nothin' but Attitude" slogan are registered trademarks or trademarks of International Hot Rod Association, LLC. Footage courtesy of Clear Channel Entertainment-Motor Sports. Developed in association with Super Happy Fun Fun, Inc. Super Happy Fun Fun and the Super Happy Fun Fun logo are the trademarks of Super Happy Fun Fun, Inc. Microsoft, Xbox, Xbox Live, the Xbox logos, and the Xbox Live logo are either registered trademarks or trademarks of Microsoft Corporation in the United States and/or other countries. All other registered marks or trademarks are the property of their respective owners. All Rights Reserved.

Warranty Information

Limited Warranty

Bethesda Softworks, a ZeniMax Media company ("Bethesda Softworks") warrants to you, the original purchaser of this disc and the game software encoded thereon ("Game"), that under normal use the Game will perform substantially as described in the accompanying manual for a period of 90 days from the date of purchase ("Warranty Period"). This Limited Warranty: (a) does not apply if the Game is used for a business or commercial purpose; and (b) is void if failure of the Game has resulted from accident, abuse, virus or misapplication.

Exclusive remedy and limitation of liability

Warranty claims must be made to the retailer from whom you purchased the Game. You must return the Game to your retailer during the Warranty Period, together with a copy of the original sales receipt and an explanation of the difficulty you are experiencing with the Game. At its option, the retailer may either repair or replace the Game. Any replacement Game will be warranted for the remainder of the original Warranty Period or 30 days, whichever is longer. Bethesda's and its suppliers' entire liability and your exclusive remedy shall be, at the retailer's option, the repair or replacement of the Game that does not meet this Limited Warranty and is properly returned to your retailer. Outside the United States, neither of these remedies nor any product support services are available without proof of purchase from an authorized international source.

Warranty Card and Warranty Protection

To be eligible for warranty protection, you must fill out and mail in the Warranty Registration Card included in this package within thirty (30) days of purchase. Failure to send in your Warranty Card within thirty (30) days of purchase shall result in the loss of your warranty protection. In the event of any questions regarding your warranty protection, Bethesda Softworks reserves the exclusive right to determine warranty eligibility and appropriate redress, if any.

No other warranties, conditions or duties

TO THE MAXIMUM EXTENT PERMITTED BY APPLICABLE LAW, BETHESDA SOFTWORKS AND ITS SUPPLIERS DISCLAIM ANY AND ALL OTHER WARRANTIES, CONDITIONS AND DUTIES, WHETHER EXPRESS, IMPLIED, STATUTORY OR OTHERWISE, INCLUDING BUT NOT LIMITED TO ANY WARRANTY OF MERCHANTABILITY, FITNESS FOR A PARTICULAR PURPOSE, TITLE, NON-INFRINGEMENT, OR NON-MISAPPROPRIATION OF INTELLECTUAL PROPERTY RIGHTS OF A THIRD PARTY.

Exclusion of consequential, incidental and certain other damages

To the full extent allowed by law, neither Bethesda Softworks and nor its suppliers are liable for any: (a) consequential or incidental damages, (b) damages for loss of any nature relating to lost profits, loss of data, privacy or confidentiality, or failure to achieve desired results or to meet any duty, including but not limited to any duty of lack of negligence or of workmanlike effort, or (c) indirect, special or punitive damages; arising out of or relating in any way to any breach of this Limited Warranty. The foregoing applies even if Bethesda Softworks or its suppliers have been advised of the possibility of such losses or damages. Some jurisdictions do not allow limitations as to how long an implied warranty lasts and/or exclusions or limitations of consequential or incidental damages so the above limitations and/or exclusions of liability may not apply to you. This Limited Warranty gives you specific rights, and you may also have other rights that vary from jurisdiction to jurisdiction.

Technical and customer support

For technical and customer support, please call 410-568-3685, 9:00 am to 5:00 pm EST Monday through Friday, excluding holidays. If you are outside the United States, send your Game disc to Bethesda Softworks LLC, 1370 Piccard Drive, Suite 120, Rockville, MD 20850, USA, together with a dated proof of purchase, your product number, a brief description of the error or defect, and your return address.