



**CHECKERED
FLAG™**

JAGUAR™

64-BIT

GAME MANUAL
MANUAL DE JEU
SPIELANLEITUNG

JAG-WARE

Don't miss out on our ultra-cool collection of official Atari Jaguar merchandise — featuring hats, T-shirts, tote bags and much more! For your free catalog, call 414-241-3313.

Stuck? Frustrated? Need a Hint?

U.S.A. Customer Help Hint Line

1-900-737-ATARI (1-900-737-2827)

95¢ per minute. If you are under 18, be sure to get a parent's permission before calling.
A touch-tone telephone is required.

U.K. Jaguar Software Helpline

0839-994460

Jaguar Software Helpline, Cuckoo Wharf Units 1-4 Lichfield Rd., Aston, Birmingham. B6 7SS
Please obtain permission to call from the person who pays the bill.
Calls cost 39p per minute cheap rate, 49p per minute at all other times (maximum charge £3.20).
Prices and games featured on this service correct at time of going to press.
We reserve the right to change the games featured on the helpline without prior notice.

If you wish to join the Official Jaguar Club, please send your name and address details to:
Jaguar Club, Atari House, Slough. SL2 5BZ

ATARI INFO CONSOMMATEUR

36.68.00.16 (2, 19 LA MINUTE)

Read before using your Atari video entertainment system.

A very small percentage of individuals may experience epileptic seizures when exposed to certain light patterns. Exposure to these patterns or backgrounds on a television screen or while playing video games may induce an epileptic seizure in these individuals. Certain conditions may induce previously undetected epileptic symptoms even in persons who have no history of epilepsy. If you, or anyone in your family, has an epileptic condition, consult your physician prior to playing. If you experience any of the following symptoms while playing a video game — dizziness, altered vision, eye or muscle twitches, loss of awareness, disorientation, any involuntary movement, or convulsions — IMMEDIATELY discontinue use and consult your physician before resuming play.

WARNING to owners of projection televisions:

Still pictures or images may cause permanent picture-tube damage or mark the phosphor of the CRT. Avoid repeated or extended use of video games on large-screen projection televisions.

This product has been rated by the Entertainment Software Rating Board. For information about the ESRB rating, or to register a complaint about the appropriateness of the rating, please contact the ESRB at 1-800-771-3772.

The logo features a stylized checkered flag with a central white circle containing a vertical line and a horizontal line, resembling a flagpole. The words "CHECKERED" and "FLAG" are written in a bold, white, sans-serif font across the center of the flag.

CHECKERED FLAG

TM

JAGUAR™ 64-Bit Interactive Multimedia System Game Manual

Handling this Cartridge

The Atari Jaguar Interactive Multimedia Cartridge is intended for use exclusively with the Atari Jaguar System.

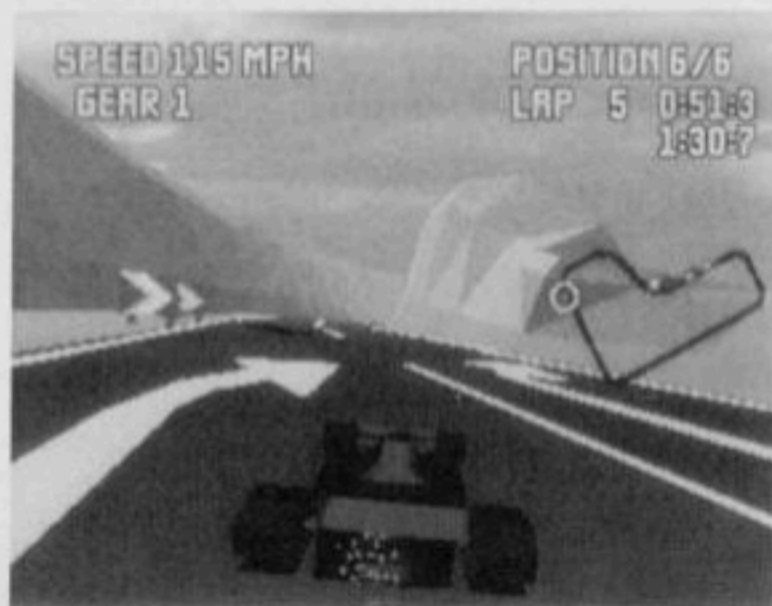
- Do not bend it, crush it or submerge it in liquids.
- Do not leave it in direct sunlight or near a radiator or other source of heat.
- Be sure to take an occasional recess during extended play to rest yourself.

Atari Corporation is unable to guarantee the accuracy of printed material after the date of publication and disclaims liability for changes, errors or omissions. Reproduction of this document or any portion of its contents is not allowed without the specific written consent of Atari Corporation.

Checkered Flag is a trademark of Atari Corporation. © 1994 Atari Corporation. Developed by Rebellion. Atari, the Atari logo and Jaguar are trademarks or registered trademarks of Atari Corporation. All Rights Reserved. This software is authorized by Atari for use with the Jaguar 64-Bit Interactive Multimedia System.

FORGET ABOUT BRAKING!

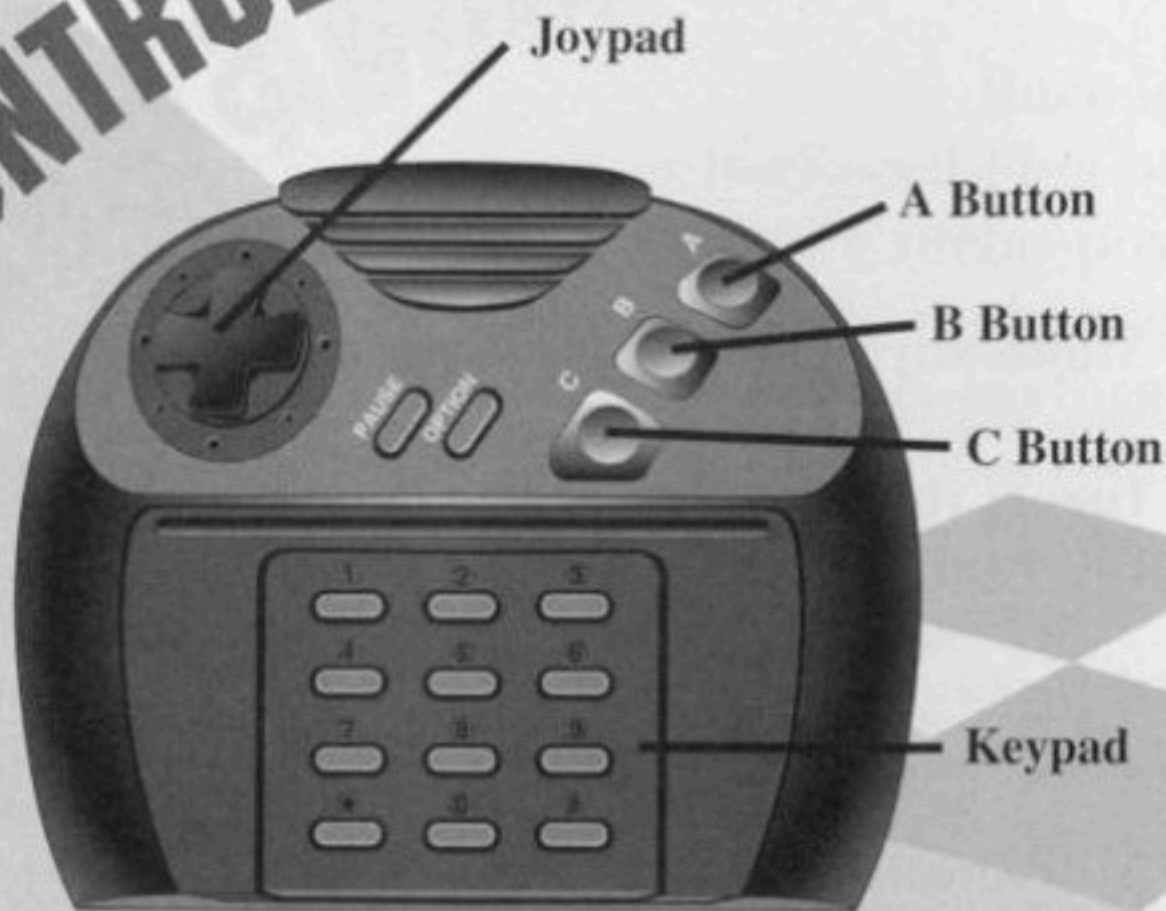
Race for the Checkered Flag behind the wheel of a turbo-powered speedway racer in real-time, 3D-action. Choose from 10 high-performance tracks and see the speedway from 6 distinct views. Alter features and attributes on your racer to improve your times or even change the weather conditions. You'll swear you feel the wind in your hair as your tires screech around the curves. Just keep your sweaty palms on the controller!



GETTING STARTED

- 1** Make sure your Atari Jaguar is OFF.
- 2** Insert the Checkered Flag cartridge into the Jaguar.
- 3** Turn the Jaguar ON.
- 4** You should see the Checkered Flag Title screen.
- 5** Press the A, B, or C Button to go to the Options Screen.

CONTROLS



A Button Accelerate

B Button Brake

C Button Cruise Control (while held down)

Button 1 Driver View 1

Button 2 Driver View 2

Button 3 Driver View 3

Button 4 Driver View 4

Button 5..... Driver View 5

Button 6..... Driver View 6

Button 0..... Music ON/OFF

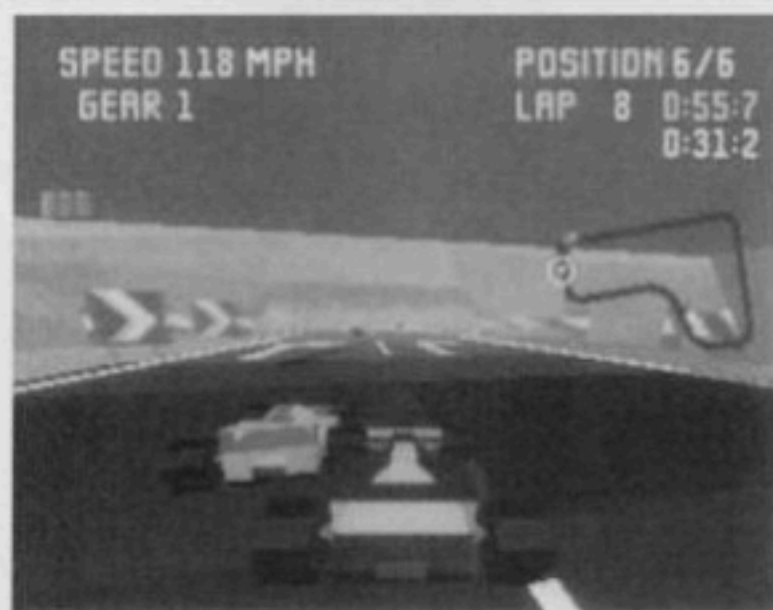
JOYPAD UP..... Manual Transmission Shift Up

JOYPAD LEFT..... Steer Left

JOYPAD RIGHT ... Steer Right

JOYPAD DOWN.... Manual Transmission Shift Down

*** and #..... Resets Game**



OPTIONS SCREEN

To get to the Options Screen, press the A, B or C Button at the Title screen. Move the Joypad LEFT/RIGHT/UP/DOWN to make a selection from the Options Screen.

YOU MAY CHANGE:

COLOR

Red/Black (default)
Blue/Yellow
White/Green
Red/White
Green/Blue
White/Orange



WEATHER Sun (default)
Rain
Fog

AIRFOIL Low (default)
High

TIRES Dry (default)
Wet

GEARING Auto5 (default)
Man6

DRONES 1 to 5 (default)

RACE Single Race (default) — Choose the number of laps and the track and race against the competition and the clock in a single track race.

Free Practice — Hone your racing skills by choosing the number of laps and the track you want to practice on — it's just you and your machine against the clock.

Tournament — It's the ultimate race for the checkered flag! Take on 5 tough competitors in a full racing season on all 10 treacherous tracks. Your starting position is based on your previous race result so you'd better burn some rubber, baby.

NOTE: In Tournament Mode, the weather is fixed, so you will need to adjust your tires and airfoil to suit track conditions.

LAPS

1-99

10 (default)

TRACK

The Hole (default)

Green Valley

River Mouth

Desert Pass

Deep Wood

Island Hop

The Gorge

Concrete Canyon

Sunset Strip

Arctic Run

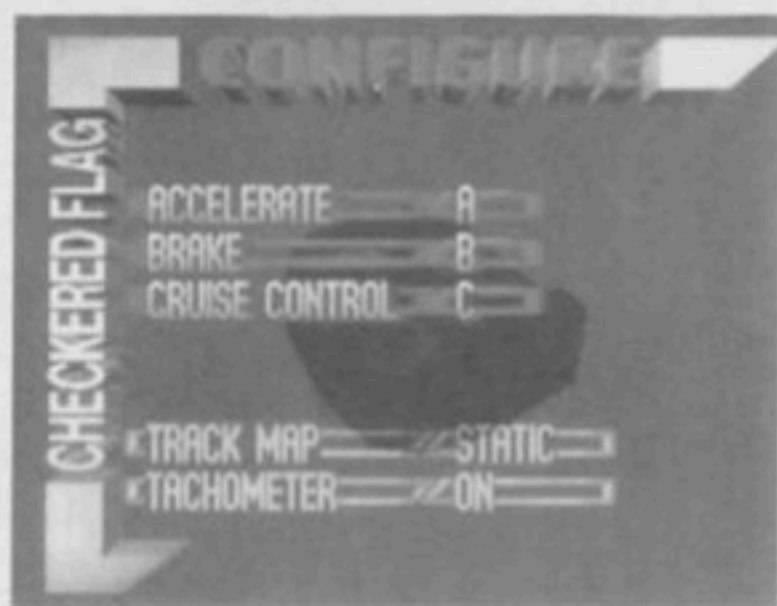
Press the A, B or C Button to start or press the Option Button to go to the Configure Screen.

CONFIGURE SCREEN

The Configure Screen lets you change the default Joypad controls to the controller configuration you'd prefer. It also lets you change the Track Map or Tachometer Display.

Press **OPTION** to move to and from the Configure Screen. Press the Joypad **UP/DOWN/LEFT/RIGHT** to select the configuration options you want.

To begin the game, press the A, B or C Button



CHANGE THE CONTROLLER CONFIGURATIONS

ACCELERATE

BRAKE

default	A	B	C
	A	C	B
	B	A	C
	B	C	A
	C	A	B
	C	B	A

CHANGE THE TRACK MAP

Spinning (default)

Static

OFF

CHANGE THE TACHOMETER DISPLAY

ON (default)

OFF

MEMORY SAVE FEATURE

The Memory Save Feature lets you keep the Music and SFX volume settings, best lap times per track, your car color and transmission type, and top five tournament results. It also lets you keep your selected track and number of laps (except if you were in tournament mode), as well as the button configuration and track map/tachometer settings.

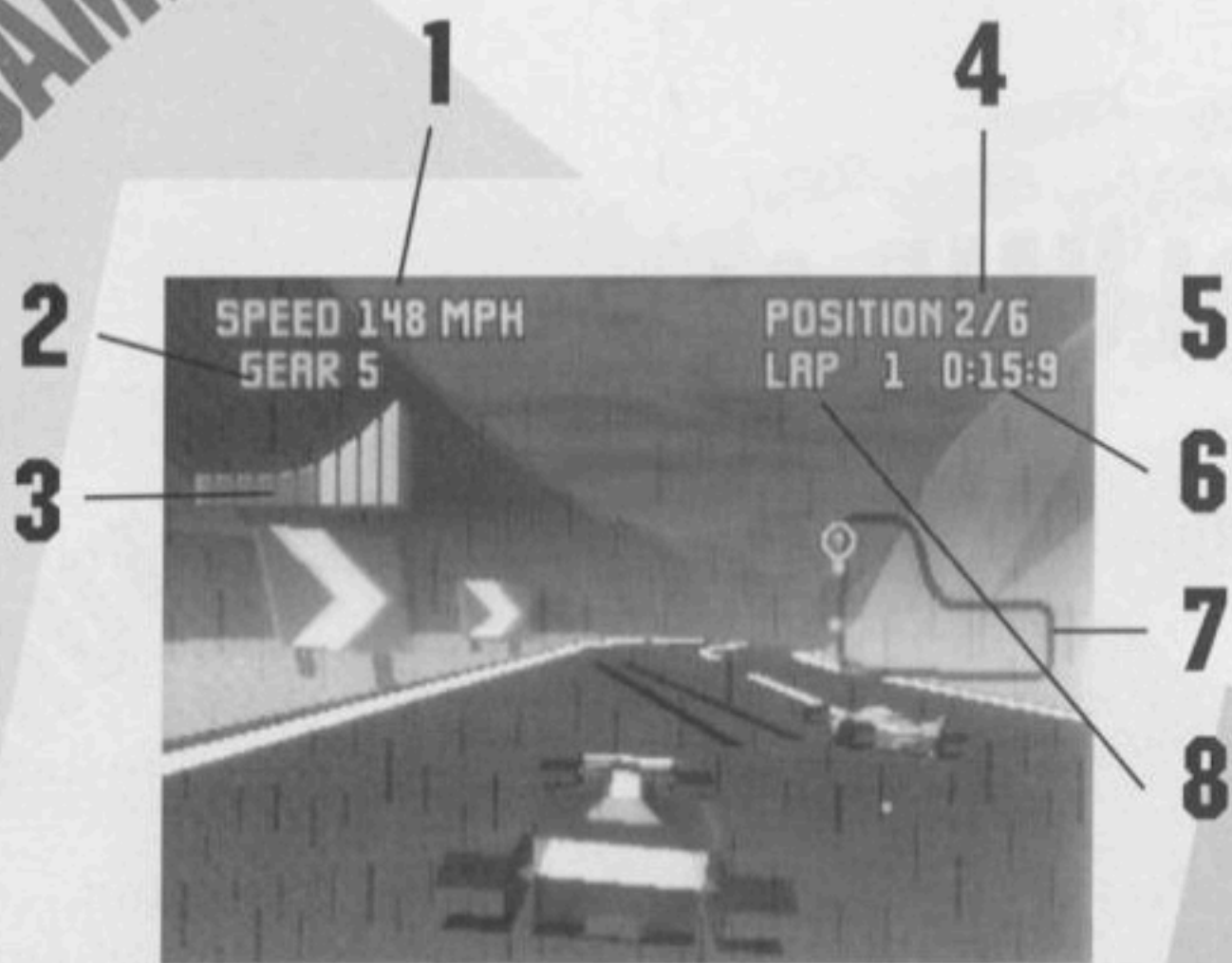
The cartridge will store up to 100,000 changes. After 100,000 changes have been recorded, no more changes will be retained. To clear the currently saved changes, press *, Option and # while on the Checkered Flag Title Screen.

VOLUME ADJUST FEATURE

To adjust the volume:

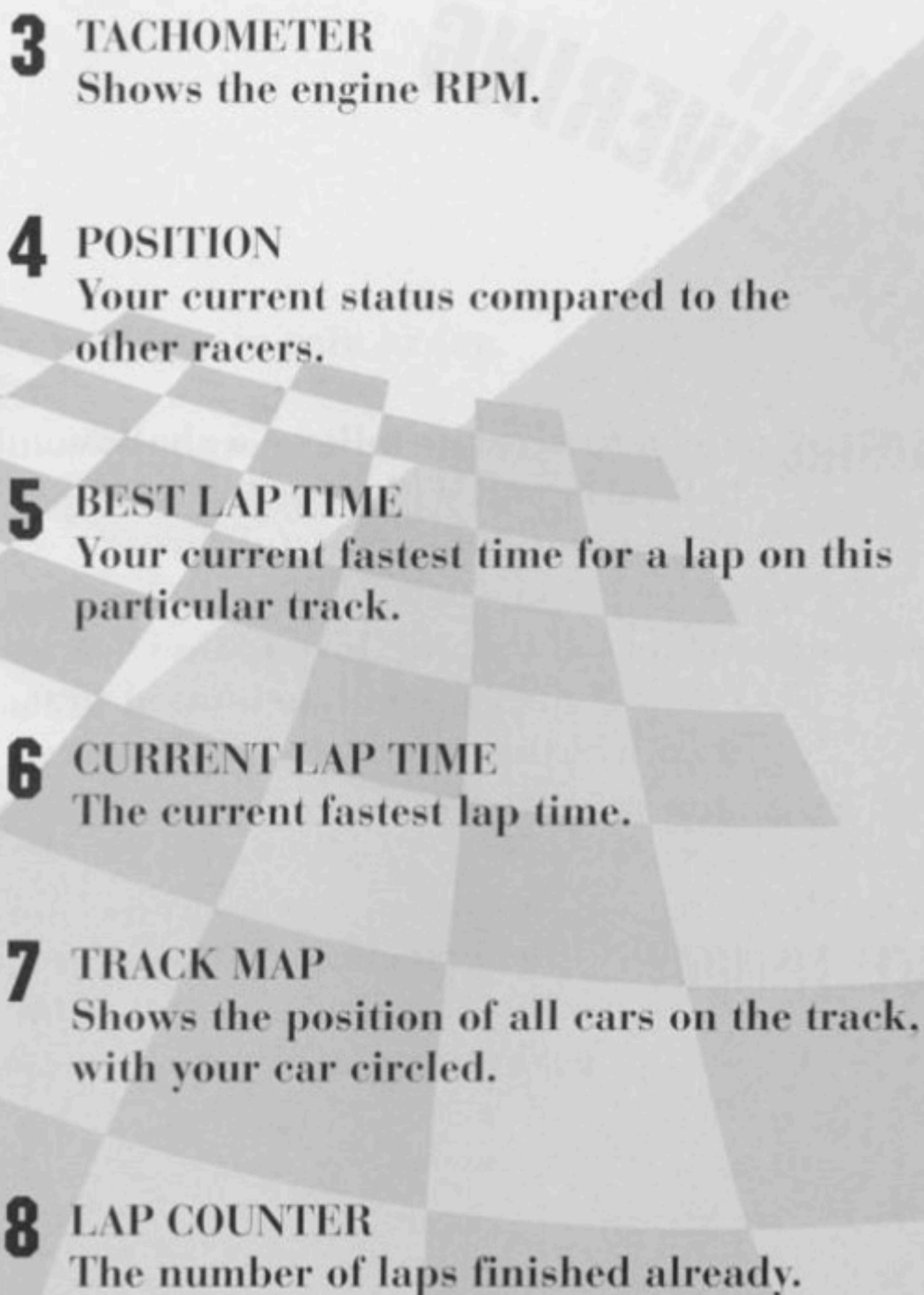
- 1** Press PAUSE during gameplay.
- 2** Press A to access Music Volume Indicator. Press the Joypad LEFT and RIGHT to adjust.
- 3** Press B to access SFX Volume Indicator. Press the Joypad LEFT and RIGHT to adjust.

GAME SCREEN



1 **SPEED**
How many miles per hour (MPH) you're racing.

2 **GEAR**
Your current gear number (1 through 5 if automatic, 1 through 6 if manual).

- 
- 3 TACHOMETER**
Shows the engine RPM.
 - 4 POSITION**
Your current status compared to the other racers.
 - 5 BEST LAP TIME**
Your current fastest time for a lap on this particular track.
 - 6 CURRENT LAP TIME**
The current fastest lap time.
 - 7 TRACK MAP**
Shows the position of all cars on the track, with your car circled.
 - 8 LAP COUNTER**
The number of laps finished already.

MANEUVERING

STEERING

Steering velocity follows a shallow bell form and with practice can be anticipated for successful turns.

While holding the Joypad down, the car will turn a small amount at first, then will turn more sharply before lessening again.

WHEEL MEMORY

Wheel memory retains your vehicle's wheel position at the beginning of a curve.

HINTS

Use wet tires in rain or fog.

Choosing manual transmission gives you a higher top speed.

A low airfoil gives your car less drag but it will have less downforce. You'll want to use it on fast tracks.

High airfoils are especially good on curvy tracks.

Avoid the roadsides and pit areas. They will slow you down and cost you time.

You have less traction in the fog.

CREDITS

Developer: Rebellion

Producer: John Skruch

Coordinator: Jason Kingsley

Programmer: Robert Dibley

Graphics: Justin Rae

Music: Will Davis
Alex Quarmby
Nate Brenholdt
James Grunke

Lead Tester: Andrew Keim

Testers: Lance J. Lewis
Dan McNamee
Scott Hunter
Martin Mueller
Tom Gillen
Joe Sousa
Hank Cappa
Stewart Wilson
Toby Harrison-Banfield
Tal Funke-Bilu

LIMITED WARRANTY

Atari warrants to the original purchaser this product to be free from defects in material and workmanship under normal authorized use for a Warranty Period of ninety (90) days from the date of purchase as evidenced by your receipt. Atari will replace the defective software free of charge. After the expiration of the Warranty Period, you assume the entire cost of all necessary servicing, repair or correction.

The warranty is null and void if the cartridge has been opened and/or any parts were removed or if software or any accessories other than those authorized by Atari are used in connection with this product. Warranty does not cover accidental or intended damage or neglect. If the product displays a fault within the warranty period, the user should return it to his place of purchase, who will follow the required procedure to obtain a replacement.

In no event shall Atari be liable for consequential or incidental damages resulting from the breach of any express or implied warranties. Some states do not allow limitations on how long an implied warranty lasts or exclusion of consequential or incidental damages, so the above limitation or exclusion may not apply to you.



Copyright 1994, Atari Corporation
Sunnyvale, CA 94089-1302
All Rights Reserved

J9007E
500707-002
Printed in USA